

Product datasheet for **RC221831**

IL28 Receptor alpha (IFNLR1) (NM_173064) Human Tagged ORF Clone

Product data:

Product Type:	Expression Plasmids
Product Name:	IL28 Receptor alpha (IFNLR1) (NM_173064) Human Tagged ORF Clone
Tag:	Myc-DDK
Symbol:	IL28 Receptor alpha
Synonyms:	CRF2/12; IFNLR; IL-28R1; IL28RA; LICR2
Mammalian Cell Selection:	Neomycin
Vector:	pCMV6-Entry (PS100001)
E. coli Selection:	Kanamycin (25 ug/mL)



[View online »](#)

ORF Nucleotide Sequence:

>RC221831 representing NM_173064
 Red=Cloning site Blue=ORF Green=Tags(s)

TTTTGTAATACGACTCACTATAGGGCGGCCGGGAATTCGTCGACTGGATCCGGTACCGAGGAGATCTGCC
 GCC**CGGATCGCC**

ATGGCGGGGCCGAGCGCTGGGGCCCCCTGCTCCTGTGCCTGCTGCAGGCCGCTCCAGGGAGCCCCGCT
 TGGCCCCCAGGAATGTGACGCTGCTCTCCAGAACTTCAGCGGTACCTGACATGGCTCCAGGGCT
 TGGCAACCCAGGATGTGACCTATTTTGTGGCTATCAGAGCTCTCCACCCGTAGACGGTGGCGCGAA
 GTGGAAGAGTGTGCGGGAACCAAGGAGCTGCTATGTTCTATGATGTGCCTGAAGAAAACAGGACCTGTACA
 ACAAGTTCAAGGGACGCGTGGGACGGTTTCTCCAGCTCCAAGTCCCCCTGGGTGGAGTCCGAATACCT
 GGATTACCTTTTGAAGTGGAGCCGGCCCCACCTGTCTGGTGTCAACCAGACGGAGGAGATCTGAGT
 GCCAATGCCACGTACCAGCTGCCCCCTGCATGCCCCACTGGATCTGAAGTATGAGGTGGCATTCTGGA
 AGGAGGGGGCCGAAACAAGACCCTATTTCCAGTCACTCCCATGGCCAGCCAGTCCAGATCACTCTCCA
 GCCAGCTGCCAGGAACACCCTGCCTCAGTGCAGAACCATCTACACGTTCAAGTGTCCGAAATACAGC
 AAGTTCTCTAAGCCACCTGCTTCTTGCTGGAGGTCCCAGAAGCCAAGTGGGCTTTCCTGGTGTGCCAT
 CGTTCTGATACTGCTGTTAGTAATTGCCGCAGGGGTGTGATCTGGAAGACCCTCATGGGAACCCCTG
 GTTTCAGCGGGCAAGATGCCACGGGCCCTGGAAGTACCAGAGGGGTCCAGGCCAGCCCTCGAGTCAAG
 GCCCCAGCCACCAACAGACAAGATGGAAGAAGGACCTTCAGAGGACGAAGAGGAGGAGGATGAGGAGG
 ACACAGAAGATGGCGTACGTTCCAGCCCTACATTGAACCACCTTCTTCTGGGCAAGAGCACCAGGC
 TCCAGGGCACTCGGAGGCTGGTGGGGTGGACTCAGGGAGGCCAGGGCTCCTCTGGTCCCAAGCGAAGGC
 TCCTCTGCTTGGGATTCTTCAGACAGAAGCTGGCCAGCACTGTGGACTCCTCTGGGACAGGGCTGGGT
 CCTCTGGCTATTTGGCTGAGAAGGGGCCAGGCCAAGGGCCGGGTGGGGATGGGCACCAAGAATCTCTCCC
 ACCACCTGAATTCCTCAAGGACTCGGGTTTCTGGAAGAGCTCCCAGAAGATAACCTCTCCTCTGGGCC
 ACCTGGGGCACCTTACCACCGGAGCCGAATCTGGTCCCTGGGGACCCCAAGTTTCTCTCAGACTGA
 CCTTCTGCTGGGAAAGCAGCCCTGAGGAGGAAGAGGAGGCGAGGGAATCAGAAATTGAGGACAGCGATGC
 GGGCAGCTGGGGGGCTGAGAGCACCCAGAGGACCAGGACAGGGGCCGGACATTGGGGCATTACATGGCC
 AGG

AG**CGGACCG**ACGCGTACGCGGCCGCTCGAGCAGAACTCATCTCAGAAGAGGATCTGGCAGCAAATGATATCC
 TGGATTACAAGGATGACGACGATAAGGTTTAA

Protein Sequence:

>RC221831 representing NM_173064
 Red=Cloning site Green=Tags(s)

MAGPERWGP LLLCLLQAAPGRPRLAPPQNVTLLSQNF SVYLTWLPGLGNPQDVTFVAYQSSPTRRRRRE
 VEECAGTKELLCSMMCLKKQDL YNKFKGRVRTVSPSSKSPWVESEYLDYLFEVEPAPPVLVLTQTEEILS
 ANATYQLPPCMPPLDLKYEVAFWKEGAGNKTLFPVTPHGQPVQITLQPAASEHCL SARTIYTFVSPKYS
 KFSKPTCFLLVPEANWAFVLPSLLILLLVIAAGGVIWKTLMGNPWFQRAKMPRALELTRGVRPTPRVR
 APATQQTRWKKDLAEDEEEDEEDTEDGVSFQPYIEPPSFLGQEHQAPGHSEAGGVDSGRPRAPLPVSEG
 SSAWSSDRSWASTVDSSWDRASSGYLAEKGPQGPGDGHQESLPPPEFSKDSGFLEELPEDNLSSWA
 TWGTLPPPEPNLVPGGPPVSLQTLTFCWESSPEEEEEARESEIEDSDAGSWGAESTQRTEDRGRTLGHYMA
 R

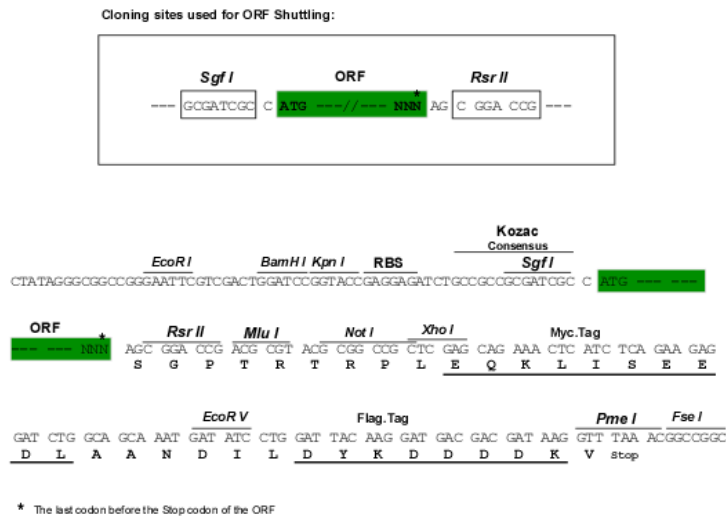
SGP**TRRRLEQKLI**SEEDLAANDILDYKDDDDKV

Chromatograms:

https://cdn.origene.com/chromatograms/ja1146_g08.zip

Restriction Sites:

Sgfl-RsrII

Cloning Scheme:


ACCN: NM_173064

ORF Size: 1473 bp

OTI Disclaimer: The molecular sequence of this clone aligns with the gene accession number as a point of reference only. However, individual transcript sequences of the same gene can differ through naturally occurring variations (e.g. polymorphisms), each with its own valid existence. This clone is substantially in agreement with the reference, but a complete review of all prevailing variants is recommended prior to use. [More info](#)

OTI Annotation: This clone was engineered to express the complete ORF with an expression tag. Expression varies depending on the nature of the gene.

Components: The ORF clone is ion-exchange column purified and shipped in a 2D barcoded Matrix tube containing 10ug of transfection-ready, dried plasmid DNA (reconstitute with 100 ul of water).

- Reconstitution Method:**
1. Centrifuge at 5,000xg for 5min.
 2. Carefully open the tube and add 100ul of sterile water to dissolve the DNA.
 3. Close the tube and incubate for 10 minutes at room temperature.
 4. Briefly vortex the tube and then do a quick spin (less than 5000xg) to concentrate the liquid at the bottom.
 5. Store the suspended plasmid at -20°C. The DNA is stable for at least one year from date of shipping when stored at -20°C.

Note: Plasmids are not sterile. For experiments where strict sterility is required, filtration with 0.22um filter is required.

RefSeq: [NM_173064.3](#)

RefSeq Size: 4462 bp

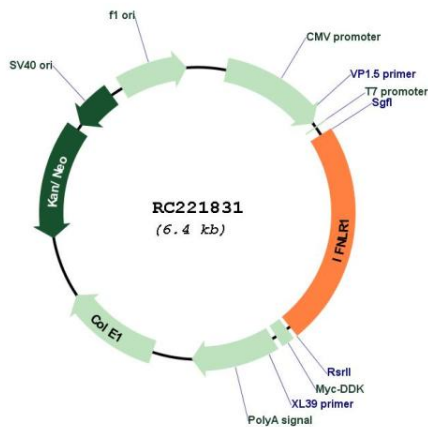
RefSeq ORF: 1476 bp

Locus ID: 163702

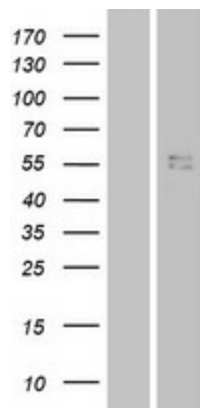
UniProt ID: [Q8IU57](#)
Cytogenetics: 1p36.11
Protein Families: Druggable Genome, Transmembrane
Protein Pathways: Cytokine-cytokine receptor interaction, Jak-STAT signaling pathway
MW: 54.2 kDa

Gene Summary: The protein encoded by this gene belongs to the class II cytokine receptor family. This protein forms a receptor complex with interleukine 10 receptor, beta (IL10RB). The receptor complex has been shown to interact with three closely related cytokines, including interleukin 28A (IL28A), interleukin 28B (IL28B), and interleukin 29 (IL29). The expression of all three cytokines can be induced by viral infection. The cells overexpressing this protein have been found to have enhanced responses to IL28A and IL29, but decreased response to IL28B. Three alternatively spliced transcript variants encoding distinct isoforms have been reported. [provided by RefSeq, Jul 2008]

Product images:



Circular map for RC221831



Western blot validation of overexpression lysate (Cat# [LY406669]) using anti-DDK antibody (Cat# [TA50011-100]). Left: Cell lysates from untransfected HEK293T cells; Right: Cell lysates from HEK293T cells transfected with RC221831 using transfection reagent MegaTran 2.0 (Cat# [TT210002]).