

## Product datasheet for **RC221826**

### HEPACAM2 (NM\_001039372) Human Tagged ORF Clone

#### Product data:

Product Type:	Expression Plasmids
Product Name:	HEPACAM2 (NM_001039372) Human Tagged ORF Clone
Tag:	Myc-DDK
Symbol:	HEPACAM2
Synonyms:	MIKI
Mammalian Cell Selection:	Neomycin
Vector:	pCMV6-Entry (PS100001)
E. coli Selection:	Kanamycin (25 ug/mL)



[View online »](#)

**ORF Nucleotide Sequence:**

>RC221826 representing NM\_001039372  
 Red=Cloning site Blue=ORF Green=Tags(s)

TTTTGTAATACGACTCACTATAGGGCGGCCGGAATTCGTCGACTGGATCCGGTACCGAGGAGATCTGCC  
 GCC**GCGATCGCC**

ATGGGACAGGATGCTTTCATGGAGCCCTTCGGTGACACACTTGGGGTCTTTCAGTGCAAAATATACCTCC  
 TTCTCTTCGGTGCTTGTCTCGGGCTGAAGGTGACAGTGCCATCACACACTGTCCATGGCGTCAGAGGTCA  
 GGCCCTCTACCTACCCGTCCTACTATGGCTTCCACACTCCAGCATCAGACATCCAGATCATATGGCTATTT  
 GAGAGACCCACACAATGCCAAATACTTACTGGGCTCTGTGAATAAGTCTGTGGTTCCTGACTTGGAAAT  
 ACCAACACAAGTTCACCATGATGCCACCAATGCATCTCTGTTATCAACCCACTGCAGTTCCTGATGA  
 AGGCAATTACATCGTGAAGGTCAACATTCAGGGAAATGGAATCTATCTGCCAGTCAGAAGATACAAGTC  
 ACGGTTGATGATCCTGTCACAAAGCCAGTGGTGCAGATTCATCCTCCCTCTGGGGCTGTGGAGTATGTGG  
 GGAACATGACCCTGACATGCCATGTGAAGGGGGCACTCGGCTAGCTTACCAATGGCTAAAAATGGGAG  
 ACCTGTCCACACCAGCTCCACCTACTCCTTTTCTCCCAAAACAATACCCTTCATATTGCTCCAGTAACC  
 AAGGAAGACATTGGGAATTACAGCTGCCTGGTGAGGAACCCTGTCAAGTGAATGGAAAGTATATCATTA  
 TGCCCATCATATATTATGGACCTTATGGACTTCAAGTGAATTCTGATAAAGGGCTAAAAGTAGGGGAAGT  
 GTTTACTGTTGACCTTGGAGAGGCCATCCTATTTGATTGTTCTGCTGATTCTCATCCCCAACACCTAC  
 TCCTGGATTAGGAGGACTGACAATACTACATATATCATTAAGCATGGGCCTCGCTTAGAAGTTGCATCTG  
 AGAAAGTAGCCCAGAAGACAATGGACTATGTGTGCTGTGCTTACAACAACATAACCGGCAGGCAAGATGA  
 AACTCATTTACAGTTATCATCACTTCCGATAGGACTGGAGAAGCTTGACAGAAAGGAAAATCATTGTCA  
 CCTTTAGCAAGTAACTGGAATATCACTATTTTTGATTATATCCATGTGCTTCTCTTCCATGGAAAA  
 AATATCAACCCTACAAAGTTATAAAACAGAAACTAGAAGGCAGGCCAGAAACAGAATACAGGAAAGCTCA  
 AACATTTTCAGGCCATGAAGATGCTCTGGATGACTTCGGAATATATGAATTTGTTGCTTTTCCAGATGTT  
 TCTGGTGTTCAGGATCCCAAGCAGGTCTGTTCCAGCCTCTGATTGTGTATCGGGGCAAGATTTGCACA  
 GTACAGTGTATGAAGTTATTCAGCACATCCCTGCCAGCAGCAAGACCATCCAGAG

**ACGCGT**ACGCGGCCGCTCGAGCAGAACTCATCTCAGAAGAGGATCTGGCAGCAAATGATATCCTGGATT  
 ACAAGGATGACGACGATAAGGTTTAA

**Protein Sequence:**

>RC221826 representing NM\_001039372  
 Red=Cloning site Green=Tags(s)

MGQDAFMPEFGDTLGVFQCKIYLLLFGACSLKVTVPSTVHGVGRQALYLPVHYGFHTPASDIQIIWLF  
 ERPHTMPKYLLGSVNKSVVPDLEYQHKFTMPPNASLLINPLQFPDEGNYIVKVNIQNGNLSASQKIQV  
 TVDDPVTKPVVQIHPPSGAVEYVGNMMLTCHVEGGTRLAYQWLKNGRPVHTSSTYSFSPQNNTLHIAPVT  
 KEDIGNYSCLVRNPVSEMSDIIMPIIYYGPLYQLVNSDKGLKVGVEFTVDLGEAILFDCSADSHPPNTY  
 SWIRRTDNTTYIIKHGPRLEVAQKTMQDYVCCAYNNITGRQDETHFTVITTSVGLKLAQKGSLS  
 PLASITGISLFLIISMCLLFLWKYQPYKVIKQKLEGRPETEYRKAQTFSGHEDALDDFGIYEFVAFDPD  
 SGVSRIPSRVSPASDCVSGQDLHSTVYVEVIQHIPAQQQDHPE

**TR**TRPLEQKLISEEDLAANDILDYKDDDDKV

**Chromatograms:**

[https://cdn.origene.com/chromatograms/mk8005\\_a03.zip](https://cdn.origene.com/chromatograms/mk8005_a03.zip)

**Restriction Sites:**

Sgfl-Mlul

**Cloning Scheme:**


**ACCN:** NM\_001039372

**ORF Size:** 1386 bp

**OTI Disclaimer:** The molecular sequence of this clone aligns with the gene accession number as a point of reference only. However, individual transcript sequences of the same gene can differ through naturally occurring variations (e.g. polymorphisms), each with its own valid existence. This clone is substantially in agreement with the reference, but a complete review of all prevailing variants is recommended prior to use. [More info](#)

**OTI Annotation:** This clone was engineered to express the complete ORF with an expression tag. Expression varies depending on the nature of the gene.

**Components:** The ORF clone is ion-exchange column purified and shipped in a 2D barcoded Matrix tube containing 10ug of transfection-ready, dried plasmid DNA (reconstitute with 100 ul of water).

**Reconstitution Method:**

1. Centrifuge at 5,000xg for 5min.
2. Carefully open the tube and add 100ul of sterile water to dissolve the DNA.
3. Close the tube and incubate for 10 minutes at room temperature.
4. Briefly vortex the tube and then do a quick spin (less than 5000xg) to concentrate the liquid at the bottom.
5. Store the suspended plasmid at -20°C. The DNA is stable for at least one year from date of shipping when stored at -20°C.

**RefSeq:** [NM\\_001039372.4](#)

**RefSeq Size:** 2092 bp

**RefSeq ORF:** 1389 bp

**Locus ID:** 253012

**UniProt ID:** [A8MWW5](#)

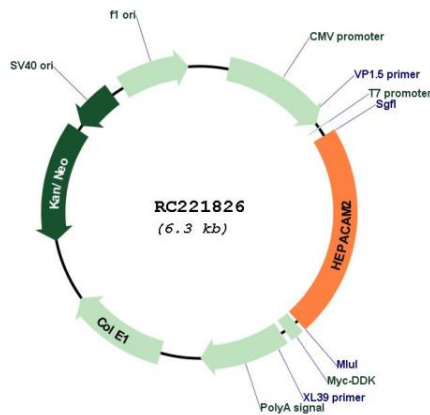
**Cytogenetics:** 7q21.2

**Protein Families:** Transmembrane

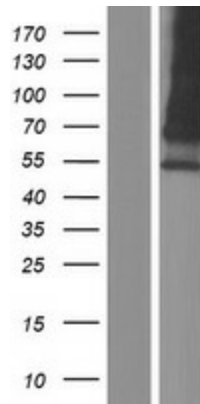
**MW:** 51.2 kDa

**Gene Summary:** This gene encodes a protein related to the immunoglobulin superfamily that plays a role in mitosis. Knockdown of this gene results in prometaphase arrest, abnormal nuclear morphology and apoptosis. Poly(ADP-ribosylation) of the encoded protein promotes its translocation to centrosomes, which may stimulate centrosome maturation. A chromosomal deletion including this gene may be associated with myeloid leukemia and myelodysplastic syndrome in human patients. [provided by RefSeq, Oct 2016]

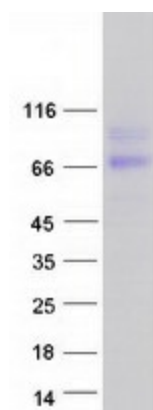
**Product images:**



Circular map for RC221826



Western blot validation of overexpression lysate (Cat# [LY422040]) using anti-DDK antibody (Cat# [TA50011-100]). Left: Cell lysates from untransfected HEK293T cells; Right: Cell lysates from HEK293T cells transfected with RC221826 using transfection reagent MegaTran 2.0 (Cat# [TT210002]).



Coomassie blue staining of purified HEPACAM2 protein (Cat# [TP321826]). The protein was produced from HEK293T cells transfected with HEPACAM2 cDNA clone (Cat# RC221826) using MegaTran 2.0 (Cat# [TT210002]).