

Product datasheet for **RC221825**

EEF1AKMT3 (NM_206914) Human Tagged ORF Clone

Product data:

Product Type: Expression Plasmids
Product Name: EEF1AKMT3 (NM_206914) Human Tagged ORF Clone
Tag: Myc-DDK
Symbol: EEF1AKMT3
Synonyms: FAM119B; METTL21B
Mammalian Cell Selection: Neomycin
Vector: pCMV6-Entry (PS100001)
E. coli Selection: Kanamycin (25 ug/mL)
ORF Nucleotide Sequence: >RC221825 representing NM_206914
Red=Cloning site Blue=ORF Green=Tags(s)

TTTTGTAATACGACTCACTATAGGGCGGCCGGAATTCGTCGACTGGATCCGGTACCGAGGAGATCTGCC
GCC**CGATCGCC**

ATGGCGGACCCCGGCCAGATCCCGAATCTGAGTCGGAATCGGTGTTCCCGGGGAGGTCGGGCTTTTG
CAGACTCTTACTCGGAGAAGAGCCAGTTCTGTTTCTGTGGGCATGTGCTGACCATCACGCAGAACTTTGG
GTCCCGCCTCGGGGTGGCGGCGCGGTGTGGGACGCGCCCTGAGCCTGTGCAATATTTTCGAGAGTCAA
AATGTGGATTTCCGAGGCAAGAAGGTGATCGAACTGGGTGCGGGACAGGCATCGTGGGATCTTGGCAG
CGCTGCAGGGAGCTTATGGTCTAGTGAGGGAGACAGAGGACGATGTCATAGAACAAGAACTCTGGCGAGG
TATGCGTGGAGCCTGTGGACATGCTCTATCCATGTCTACCATGACTCCCTGGGAATCCATCAAGGGAAGC
TCTGTCAGGGGGGATGTTACCATCAC

ACGCGTACGCGGCCGCTCGAGCAGAACTCATCTCAGAAGAGGATCTGGCAGCAAATGATATCCTGGATT
ACAAGGATGACGACGATAAGGTTTAA

Protein Sequence: >RC221825 representing NM_206914
Red=Cloning site Green=Tags(s)
MADPGDPPESESESVFPREVGLFADSYSEKSFQFCGHVLTITQNFGRSLGVAARVWDAALSLCNYFESQ
NVDFRGGKVIELGAGTGIVGILAAALQAYGLVRETEDDVIEQELWRGMRGACGHALSMSTMPWESIKGS
SVRGGCYHH

TRTRPLEQKLISEEDLAANDILDYKDDDDKV

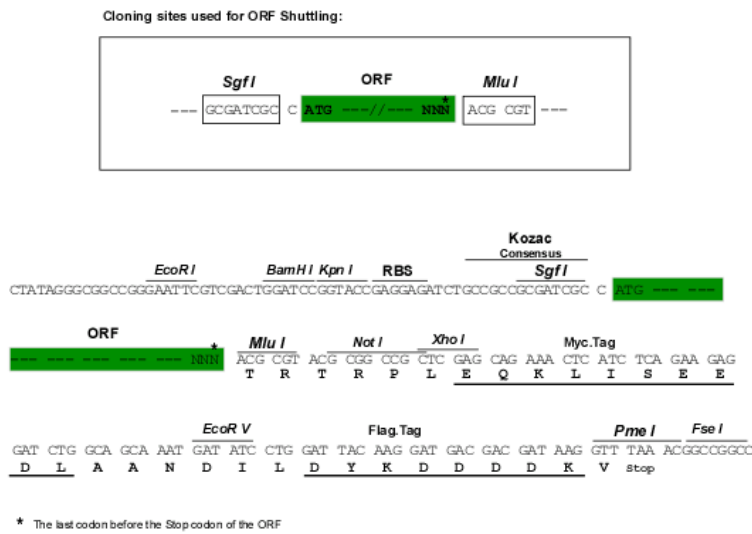
Chromatograms: https://cdn.origene.com/chromatograms/ja1456_b01.zip



[View online »](#)

Restriction Sites: SgfI-MluI

Cloning Scheme:



ACCN: NM_206914

ORF Size: 447 bp

OTI Disclaimer: The molecular sequence of this clone aligns with the gene accession number as a point of reference only. However, individual transcript sequences of the same gene can differ through naturally occurring variations (e.g. polymorphisms), each with its own valid existence. This clone is substantially in agreement with the reference, but a complete review of all prevailing variants is recommended prior to use. [More info](#)

OTI Annotation: This clone was engineered to express the complete ORF with an expression tag. Expression varies depending on the nature of the gene.

Components: The ORF clone is ion-exchange column purified and shipped in a 2D barcoded Matrix tube containing 10ug of transfection-ready, dried plasmid DNA (reconstitute with 100 ul of water).

Reconstitution Method:

1. Centrifuge at 5,000xg for 5min.
2. Carefully open the tube and add 100ul of sterile water to dissolve the DNA.
3. Close the tube and incubate for 10 minutes at room temperature.
4. Briefly vortex the tube and then do a quick spin (less than 5000xg) to concentrate the liquid at the bottom.
5. Store the suspended plasmid at -20°C. The DNA is stable for at least one year from date of shipping when stored at -20°C.

RefSeq: [NM_206914.2](#)

RefSeq Size: 2856 bp

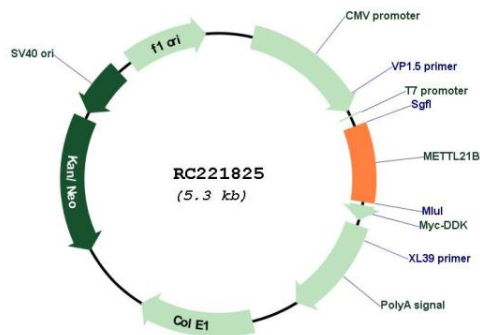
RefSeq ORF: 450 bp

Locus ID: 25895

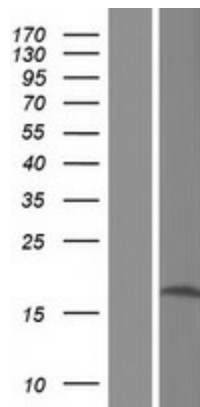
UniProt ID: [Q96AZ1](#)
Cytogenetics: 12q14.1
MW: 16 kDa

Gene Summary: Protein-lysine methyltransferase that selectively methylates EEF1A1 and EEF1A2 at 'Lys-165' in an aminoacyl-tRNA and GTP-dependent manner. EEF1A1 methylation by EEF1AKMT3 is dynamic as well as inducible by stress conditions, such as ER-stress, and plays a regulatory role on mRNA translation.[UniProtKB/Swiss-Prot Function]

Product images:



Circular map for RC221825



Western blot validation of overexpression lysate (Cat# [LY404164]) using anti-DDK antibody (Cat# [TA50011-100]). Left: Cell lysates from untransfected HEK293T cells; Right: Cell lysates from HEK293T cells transfected with RC221825 using transfection reagent MegaTran 2.0 (Cat# [TT210002]).