

Product datasheet for **RC221824**

Complement C8A (C8A) (NM_000562) Human Tagged ORF Clone

Product data:

Product Type:	Expression Plasmids
Product Name:	Complement C8A (C8A) (NM_000562) Human Tagged ORF Clone
Tag:	Myc-DDK
Symbol:	Complement C8A
Mammalian Cell Selection:	Neomycin
Vector:	pCMV6-Entry (PS100001)
E. coli Selection:	Kanamycin (25 ug/mL)



[View online »](#)

ORF Nucleotide Sequence:

>RC221824 ORF sequence
 Red=Cloning site Blue=ORF Green=Tags(s)

TTTTGTAATACGACTCACTATAGGGCGGCCGGAATTCGTCGACTGGATCCGGTACCGAGGAGATCTGCC
 GCC**CGGATCGCC**

ATGTTTGTCTGTTGTTTTCTTCATCTTGTCTTTGATGACTTGTGACCTGGGGTAAGTGCACAGGAGAAGG
 TGAACCAGAGAGTAAGACGGGCAGCTACACCCGAGCAGTTACCTGCCAGCTGAGCAACTGGTCAGAGTG
 GACAGATTGCTTTCCGTGCCAGGACAAAAAGTACCGACACCGGAGCCTCTTGACGCCAAACAAGTTGGG
 GGAACCATCTGCAGTGGTGACATCTGGGATCAAGCCAGCTGCTCCAGTTCTACAATTGTGTAAGGAAAAG
 CACAGTGTGGACAGGATTTCCAGTGAAGGAGACAGGTCGCTGCCTGAAACGCCACCTTGTGTGTAATGG
 AGACCAGGACTGCCTTGTGGCTCTGATGAGGACGACTGTGAAGATGTCAGGGCCATTGACGAAGACTGC
 AGCCAGTATGAACCAATCCAGGATCACAGAAGGCAGCCTTGGGGTACAATATCTGACCCAGGAAGATG
 CTCAGAGTGTGTACGATGCCAGTTATTATGGGGCCAGTGTGAGACGGTATAACAATGGGGAATGGAGGGA
 GCTTCGATATGACTCCACCTGTGAACGTCTCTACTATGGAGATGATGAGAAATACTTTCGAAACCCCTAC
 AACTTTCTGAAGTACCACCTTGAAGCCCTGGCAGATACTGGAATCTCCTCAGAGTTTTATGATAATGCAA
 ATGACCTTCTTTCCAAAGTTAAAAAAGACAAGTCTGACTCATTGGAGTGACCATCGGCATAGGCCACAGC
 CGGCAGCCCTTTATTGGTGGGTGTAGGTGTATCCCACTCACAAAGACATTCATTCTTGAACGAATTAAC
 AAGTATAATGAGAAGAAATTCATTTTCAACAAGATCTTCAACAAGGTGCAGACTGCACATTTTAAGATGA
 GGAAGGATGACATTATGCTGGATGAAGGAATGCTGCAGTCATTAATGGAGCTTCCAGATCAGTACAATTA
 TGGCATGTATGCCAAGTTCATCAATGACTATGGCACCCATTACATCACATCTGGATCCATGGGTGGCATT
 TATGAATATATCCTGGTATTGACAAAGCAAAAATGGAATCCCTTGGTATTACCAGCAGAGATATCACGA
 CATGTTTTGGAGGCTCCTTGGGCATTCAATATGAAGACAAAATAAATGTTGGTGGAGTTTATCAGGAGA
 CCATTGTAAAAAATTTGGAGGTGGCAAACTGAAAGGGCCAGGAAGGCCATGGCTGTGGAAGACATTATT
 TCTCGGGTGCAGGTGGCAGTTCTGGCTGGAGCGGTGGCTTGGCACAGAACAGGAGCACCATACATACC
 GTTCTGGGGGAGGTCAATAAGTATAATCCTGTTGTTATCGATTTTGGAGTGCAGCCTATCCACGAGGT
 GCTGCGGCACACAAGCCTGGGCCTCTGGAGGCCAAGCGCCAGAACCTGCGCCGCGCCTTGGACCAGTAT
 CTGATGGAATTCATGCCTGCCGATGTGGGCCTTGCTTCAACAATGGGGTCCCCATCTCGAGGGCACCA
 GCTGCAGTGCCAGTGCCGCTGGGTAGCTTGGGTGCTGCCTGTGAGCAAACACAGACAGAAGGAGCCAA
 AGCAGATGGGAGCTGGAGTTGCTGGAGCTCCTGGTCTGTATGCAGAGCAGGCATCCAGGAAAGGAGAAGA
 GAGTGTGACAATCCAGCACCTCAGAATGGAGGGGCTCGTGTCCAGGGCGGAAAGTACAGACGCAGGCTT
 GC

ACGCGTACGCGGCCGCTCGAGCAGAAACTCATCTCAGAAGAGGATCTGGCAGCAAATGATATCCTGGATT
 ACAAGGATGACGACGATAAGGTTTAA

Protein Sequence:

>RC221824 protein sequence
 Red=Cloning site Green=Tags(s)

MFAVFFFILSLMTCQPGVTAQEKVNQRVRAATPAAVTCQLSNWSEWTDGFCQDKKYRHRSLQLPNKFG
 GTICSGDIWDQASCSSTTCVRKAQCGQDFQCKETGRCLKRHLVCNGDQDCLDGSDEDDCEDVRAIDEDC
 SQYEPIPGSQKAAALGYNILTQEDAQSVYDASYGGQCETVYNGEWRELRYDSTCERLYYGDDEKYFRKPY
 NFLKYHFEALADTGISSEFYDNANDLLSKVKKDKSDSFGVTIGIGPAGSPLLVGVGVSQDTSFLNELN
 KYNEKKFIFTRIFTKVQTAHFKMRKDDIMLDEGMLQSLMELPDQYNYGMYAKFINDYGTHYITSGSMGGI
 YEYILVIDKAKMESLGITSRDITTCFSGSLGIQYEDKINVGGGLSGDHCKKFGGKTERARKAMAVEDII
 SRVRGSSGWSGGLAQRNSTITYRSWGRSLKYNPVVIDFEMQPIHEVLRHTSLGPLAKRQNLRRALDQY
 LMEFNACRCGPFNNGVPILEGTSRCRCQRLGSLGAACEQTQTEGAKADGWSWCSWSVCRAGIQERRR
 ECDNPAPQNGGASCPGRKVQTQAC

TRTRPLEQKLISEEDLAANDILDYKDDDDKV

Chromatograms:

https://cdn.origene.com/chromatograms/mk6607_e12.zip

Restriction Sites: SgfI-MluI

Cloning Scheme:



ACCN: NM_000562

ORF Size: 1752 bp

OTI Disclaimer: The molecular sequence of this clone aligns with the gene accession number as a point of reference only. However, individual transcript sequences of the same gene can differ through naturally occurring variations (e.g. polymorphisms), each with its own valid existence. This clone is substantially in agreement with the reference, but a complete review of all prevailing variants is recommended prior to use. [More info](#)

OTI Annotation: This clone was engineered to express the complete ORF with an expression tag. Expression varies depending on the nature of the gene.

Components: The ORF clone is ion-exchange column purified and shipped in a 2D barcoded Matrix tube containing 10ug of transfection-ready, dried plasmid DNA (reconstitute with 100 ul of water).

- Reconstitution Method:
1. Centrifuge at 5,000xg for 5min.
 2. Carefully open the tube and add 100ul of sterile water to dissolve the DNA.
 3. Close the tube and incubate for 10 minutes at room temperature.
 4. Briefly vortex the tube and then do a quick spin (less than 5000xg) to concentrate the liquid at the bottom.
 5. Store the suspended plasmid at -20°C. The DNA is stable for at least one year from date of shipping when stored at -20°C.

RefSeq: [NM_000562.3](#)

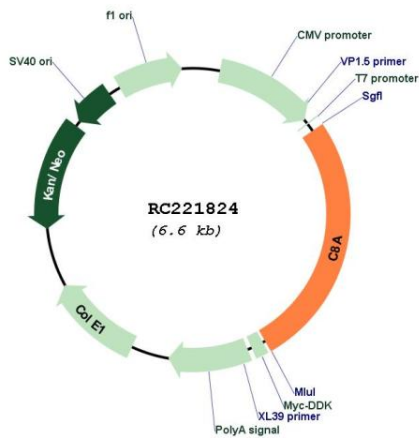
RefSeq Size: 2392 bp

RefSeq ORF: 1755 bp

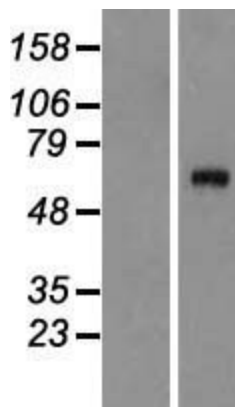
Locus ID: 731

UniProt ID: [P07357](#)
Cytogenetics: 1p32.2
Domains: tsp_1, MACPF, ldl_recept_a
Protein Families: Druggable Genome, Secreted Protein
Protein Pathways: Complement and coagulation cascades, Prion diseases, Systemic lupus erythematosus
MW: 65.2 kDa
Gene Summary: C8 is a component of the complement system and contains three polypeptides, alpha, beta and gamma. This gene encodes the alpha subunit of C8. C8 participates in the formation of the membrane attack complex (MAC). The MAC assembles on bacterial membranes to form a pore, permitting disruption of bacterial membrane organization. Mutations in this gene cause complement C8 alpha-gamma deficiency. [provided by RefSeq, Nov 2008]

Product images:



Circular map for RC221824



Western blot validation of overexpression lysate (Cat# [LY424641]) using anti-DDK antibody (Cat# [TA50011-100]). Left: Cell lysates from untransfected HEK293T cells; Right: Cell lysates from HEK293T cells transfected with RC221824 using transfection reagent MegaTran 2.0 (Cat# [TT210002]).