

## Product datasheet for **RC221813**

### **RWDD1 (NM\_001007464) Human Tagged ORF Clone**

#### Product data:

Product Type:	Expression Plasmids
Product Name:	RWDD1 (NM_001007464) Human Tagged ORF Clone
Tag:	Myc-DDK
Symbol:	RWDD1
Synonyms:	CGI-24; PTD013
Mammalian Cell Selection:	Neomycin
Vector:	pCMV6-Entry (PS100001)
E. coli Selection:	Kanamycin (25 ug/mL)
ORF Nucleotide Sequence:	>RC221813 ORF sequence Red=Cloning site Blue=ORF Green=Tags(s)

TTTTGTAATACGACTCACTATAGGGCGCCGGAATTCGTCGACTGGATCCGGTACCGAGGAGATCTGCC  
GCC**CGATCGCC**

ATGACAGATTACGGCGAGGAGCAGCGCAACGAGCTGGAGGCCCTGGAGTCCATCTACCCTGACTCCTTCA  
CAGTATTATCAGAAAATCCACCCAGCTTACCATTACTGTGACGTCTGAGGCTGGAGAAAATGATGAAAC  
TGTCAGACTACCCTCAAGTTTACATACAGTGAAAAATACCCAGATGAAGCTCCCCTTTATGAAATATTC  
TCCCAGGAAAATCTAGAAGATAATGATGTCTCAGACATTTTAAAATTACTAGCATTACAGGCTGAAGAAA  
ATCTTGGTATGGTGATGATTTTTACTCTAGTGACAGCTGTGCAAGAAAAATTAATGAAATAGTAGATCA  
GATAAAAAGTAGAAGAGAAGAAGAAAAGAAACAAAAAGAAAAAGCAGAAGAAGCTGAAAAGCAATTA  
TTCCATGGTACTCCAGTTACAATTGAGAAATTTCTAAATTGGAAGCCAAGTTTGTGCAAGAACTCTTGG  
AAATTAAGAAAGAAAGGATGAAAGAAGAACAAGCAGGAAAAATAAATTAAGTGGGAAACAACCTATT  
TGAAACAGATCATAATCTTGACACATCTGATATCCAGTTCTTGGAGGATGCTGGAACAACGTGGAGGTA  
GATGAGTCTTTGTTCCAAGAAATGGATGACTTGGAGCTGGAGGATGATGAAGATGATCCAGACTATAATC  
CTGCTGACCCAGAGAGTGACTCAGCTGAC

**ACGCGT**ACGCGGCCGCTCGAGCAGAACTCATCTCAGAAGAGGATCTGGCAGCAAATGATATCCTGGATT  
ACAAGGATGACGACGATAAGGTTTAA



[View online »](#)



**Reconstitution Method:**

1. Centrifuge at 5,000xg for 5min.
2. Carefully open the tube and add 100ul of sterile water to dissolve the DNA.
3. Close the tube and incubate for 10 minutes at room temperature.
4. Briefly vortex the tube and then do a quick spin (less than 5000xg) to concentrate the liquid at the bottom.
5. Store the suspended plasmid at -20°C. The DNA is stable for at least one year from date of shipping when stored at -20°C.

**RefSeq Size:** 1562 bp

**RefSeq ORF:** 444 bp

**Locus ID:** 51389

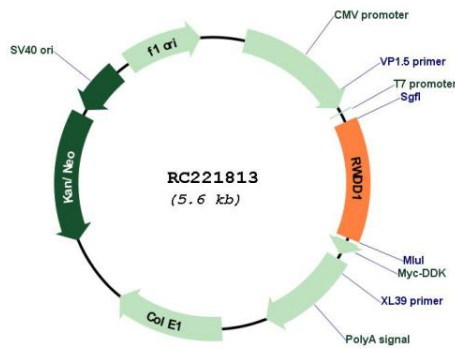
**UniProt ID:** [Q9H446](#)

**Cytogenetics:** 6q22.1

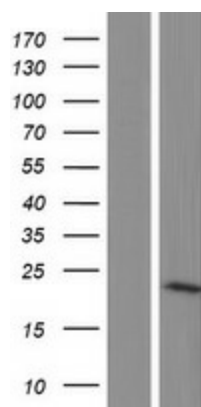
**MW:** 27.9 kDa

**Gene Summary:** Protects DRG2 from proteolytic degradation.[UniProtKB/Swiss-Prot Function]

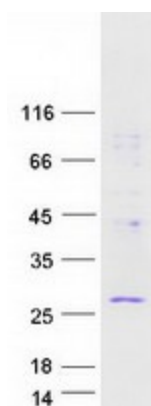
**Product images:**



Circular map for RC221813



Western blot validation of overexpression lysate (Cat# [LY423486]) using anti-DDK antibody (Cat# [TA50011-100]). Left: Cell lysates from untransfected HEK293T cells; Right: Cell lysates from HEK293T cells transfected with RC221813 using transfection reagent MegaTran 2.0 (Cat# [TT210002]).



Coomassie blue staining of purified RWDD1 protein (Cat# [TP321813]). The protein was produced from HEK293T cells transfected with RWDD1 cDNA clone (Cat# RC221813) using MegaTran 2.0 (Cat# [TT210002]).