

Product datasheet for RC221809

MYADM (NM_138373) Human Tagged ORF Clone

Product data:

Product Type:	Expression Plasmids
Product Name:	MYADM (NM_138373) Human Tagged ORF Clone
Tag:	Myc-DDK
Symbol:	MYADM
Synonyms:	SB135
Mammalian Cell Selection:	Neomycin
Vector:	pCMV6-Entry (PS100001)
E. coli Selection:	Kanamycin (25 ug/mL)
ORF Nucleotide Sequence:	>RC221809 ORF sequence Red=Cloning site Blue=ORF Green=Tags(s)

TTTTGTAATACGACTCACTATAGGGCGGCCGGAATTCGTCGACTGGATCCGGTACCGAGGAGATCTGCC
GCC**CGATCGCC**

ATGCCAGTGACGGTAACCCGCACCACCATCACAACCACCACGACGTCATCTTCGGGCCTGGGGTCCCCCA
TGATCGTGGGGTCCCCTCGGGCCCTGACACAGCCCCTGGGTCTCCTTCGCCTGCTGCAGCTGGTGTCTAC
CTGCGTGGCCTTCTCGTGGTGGCTAGCGTGGCGCCTGGACGGGGTCCATGGGCAACTGGTCCATGTTCC
ACCTGGTGTCTTCTGCTTCTCCGTGACCCCTGATCATCCTCATCGTGGAGCTGTGCGGGCTCCAGGCCCGCT
TCCCCCTGTCTTGCGCAACTTCCCATCACCTTCGCCTGCTATGCGGCCCTTCTGCCTCTCGGCCTC
CATCATCTACCCACCACCTATGTCCAGTTCCTGTCCCACGGCCGTTTCGGGGACCACGCCATCGCCGCC
ACCTTCTTCTCCTGCATCGCGTGTGTGGCTTACGCCACCGAAGTGGCCTGGACCCGGGCCCGCCGGCGG
AGATCACTGGCTATATGGCCACCGTACCCGGGCTGCTGAAGGTGCTGGAGACCTTCGTTGCCTGCATCAT
CTTCGCGTTTCATCAGCGACCCCAACCTGTACCAGCACCAGCCTGCCCTGGAGTGGTGCCTGGCGGTGAC
GCCATCTGCTTTCATCCTAGCGGCCATCGCCATCCTGTGAACCTGGGGGAGTGCACCAACGTGCTACCCA
TCCCCTTCCCAGCTTCTGTGCGGGCTGGCCTTGCTGTCTGTCTCCTCTATGCCACCGCCCTTGTCTCT
CTGGCCCTCTACCAGTTCGATGAGAAGTATGGCGGCCAGCCTCGCGCTCGAGAGATGTAAGCTGCAGC
CGCAGCCATGCCTACTACGTGTGTGCTGGGACCGCCGACTGGCTGTGGCCATCCTGACGGCCATCAACC
TACTGGCGTATGTGGCTGACCTGGTGCCTCTGCCACCTGGTTTTTGTCAAGGTC

ACGCGTACGCGGCCGCTCGAGCAGAAACTCATCTCAGAAGAGGATCTGGCAGCAAATGATATCCTGGATT
ACAAGGATGACGACGATAAGGTTTAA



[View online »](#)

Protein Sequence: >RC221809 protein sequence
Red=Cloning site Green=Tags(s)

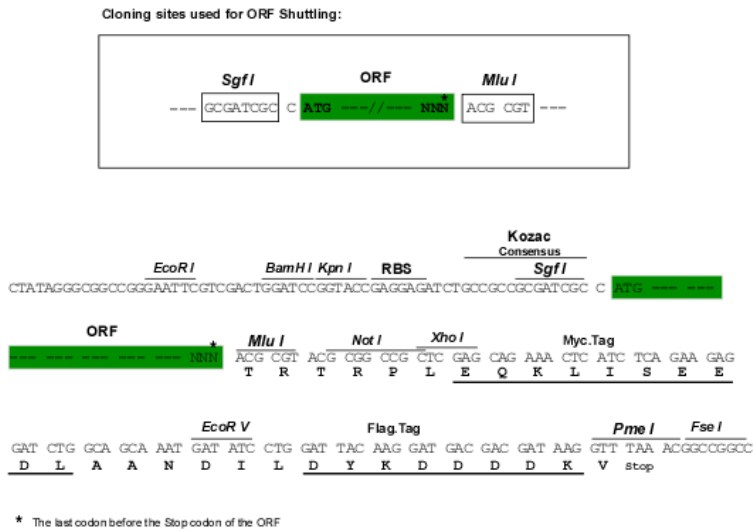
MPVTVTRTTITTTTTSSSGLGSPMIVGSPRALTQPLGLLRLLQLVSTCVAFSLVASVGAWTGSMGNWSMF
 TWCFCFSVTLIILIVELCGLQARFPLSWRNFPITFACYAALFCLSASIIYPTTYVQFLSHGRSRDHAIAA
 TFFSCIACVAYATEVAWTRARPEITGYMATVPGLLKVLETFVACIIFAFISDPNLYQHQPALWCVAVY
 AICFILAAIAILLNLGECTNVLPIPFPSFLSGLALLSVLLYATALVWPLYQFDEKYGGQPRRSRDVSCS
 RSHAYYVCAWDRRLAVAILTAINLLAYVADLVHSAHLVFVKV

TRTRPLEQKLISEEDLAANDILDYKDDDDKV

Chromatograms: https://cdn.origene.com/chromatograms/mk6380_c05.zip

Restriction Sites: SgfI-MluI

Cloning Scheme:



ACCN: NM_138373

ORF Size: 966 bp

OTI Disclaimer: The molecular sequence of this clone aligns with the gene accession number as a point of reference only. However, individual transcript sequences of the same gene can differ through naturally occurring variations (e.g. polymorphisms), each with its own valid existence. This clone is substantially in agreement with the reference, but a complete review of all prevailing variants is recommended prior to use. [More info](#)

OTI Annotation: This clone was engineered to express the complete ORF with an expression tag. Expression varies depending on the nature of the gene.

Components: The ORF clone is ion-exchange column purified and shipped in a 2D barcoded Matrix tube containing 10ug of transfection-ready, dried plasmid DNA (reconstitute with 100 ul of water).

Reconstitution Method:

1. Centrifuge at 5,000xg for 5min.
2. Carefully open the tube and add 100ul of sterile water to dissolve the DNA.
3. Close the tube and incubate for 10 minutes at room temperature.
4. Briefly vortex the tube and then do a quick spin (less than 5000xg) to concentrate the liquid at the bottom.
5. Store the suspended plasmid at -20°C. The DNA is stable for at least one year from date of shipping when stored at -20°C.

RefSeq: [NM_138373.5](#)

RefSeq Size: 3095 bp

RefSeq ORF: 969 bp

Locus ID: 91663

UniProt ID: [Q96S97](#)

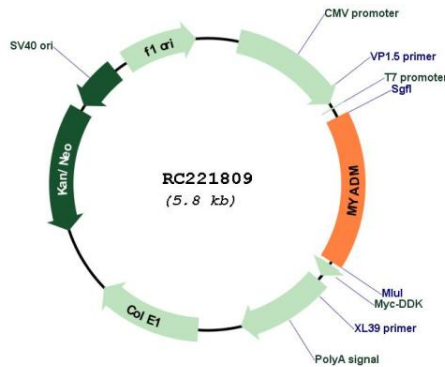
Cytogenetics: 19q13.42

Domains: MARVEL

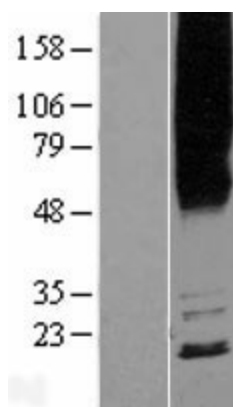
Protein Families: Transmembrane

MW: 35.3 kDa

Product images:



Circular map for RC221809



Western blot validation of overexpression lysate (Cat# [LY422677]) using anti-DDK antibody (Cat# [TA50011-100]). Left: Cell lysates from untransfected HEK293T cells; Right: Cell lysates from HEK293T cells transfected with [RC222301] using transfection reagent MegaTran 2.0 (Cat# [TT210002]).