

Product datasheet for **RC221806**

C1orf222 (NM_001003808) Human Tagged ORF Clone

Product data:

Product Type:	Expression Plasmids
Product Name:	C1orf222 (NM_001003808) Human Tagged ORF Clone
Tag:	Myc-DDK
Symbol:	C1orf222
Synonyms:	MGC133181
Mammalian Cell Selection:	Neomycin
Vector:	pCMV6-Entry (PS100001)
E. coli Selection:	Kanamycin (25 ug/mL)
ORF Nucleotide Sequence:	>RC221806 ORF sequence Red=Cloning site Blue=ORF Green=Tags(s)

TTTTGTAATACGACTCACTATAGGGCGGCCGGAATTCGTCGACTGGATCCGGTACCGAGGAGATCTGCC
GCC**CGATCGCC**

ATGGGCACTGGCGTGGCGTCCATGATCACGTGCTCCATTGAAGGCAGCGTCCTCAACATGGGCTATGTGA
TTGCCGGAGAGTCTGTGCCTCAGGCTTCAAGCTGCAGAACAACTCTCTGCTCCCATCAAGTTCTCCAT
GCACCTGGACAGCCTCTCCAGCACCCGGGGCCGGGGCCAGCAGCAGCTGCCGCAGTTCTCAGCTCGCCC
TCCCAGAGGACGGAGGTGGTCCGGACGCAGAATCTCAACGGTCAGAGCGTGTTCAGCGTGGCCCCGTCA
AGGGCGTCATGGACCCCGGAAGACACAAGACTTCACTGTCACCTTCAGCCCCGACCACGAAAGCCTCTA
CTTCTCCGACAAGCTCCAGGTGGTGTCTTTGAAAAGAAAATCTCCACCAGATCCTGCTGAAGGGTGCC
GCCTGTCAGCACATGATGTTCTGTGGAGGGCGGCCACCCCTGGACGTGCCCGTGGAGTCTCTGACAGCGA
TCCCTGTATTTGACCCAGGCACAGAGAGGCCAGCTCCCGGCCAGGCCCTCTCTCCAGAAGCTGAGGA
GCTGAGGCCCATCCTGGTGACCCCTGGACTACATCCAGTTTGACACAGACACGCCAGCCCCACCTGCCACC
CGAGAGCTGCAGGTGGGCTGTATCCGGACCACCCAGCCATCTCCAAGAAGACCGTTGAGTTCAGCATAG
ACAGCGTCGCATCCCTGCAGCACAAAGGGTTTCTCTATTGAGCCCTCCAGGGGCTCCGTGGAGCGCGCCA
GACGAAGACCATCAGCATCTCTGGGTGCCACCTGCGGACTTTGATCCAGACCACCCACTCATGGTGTGCG
GCCCTGCTGCAGCTAAGGGGGATGTGAAGGAGACCTACAAGTTCATCTTTGTAGCCAGGTGTTGACTG
GCCCC

ACGCGTACGCGGCCGCTCGAGCAGAACTCATCTCAGAAGAGGATCTGGCAGCAAATGATATCCTGGATT
ACAAGGATGACGACGATAAGGTTTAA



[View online »](#)

Protein Sequence: >RC221806 protein sequence
Red=Cloning site Green=Tags(s)

MGTGVASMITCSIEGSVLNMGYVIAGESVSSGFKLQNNLLPIKFSMHLDSLSTRGRGQQLPQFLSSP
 SQRTEVVGTONLNGQSVF SVAPVKGVMDPGKTQDFVTTFSPDHESLYFSDKLQVVLFEKKISHQILLKGA
 ACQHMMFVEGGDPLDVPVESLTAIPVFDPRHREASSRPGPLSPEAEELRPILVTLVDYIQFDTDTPAPPAT
 RELQVGCIRTTQPSPKKTVEFSIDSVASLQHKGF SIEPSRGSVERGQTKTISISWVPPADFDPDHPLMVS
 ALLQLRGDVKETYKVIFVAQVLTGP

TRTRPLEQKLISEEDLAANDILDYKDDDDKV

Chromatograms: https://cdn.origene.com/chromatograms/mk6445_d11.zip

Restriction Sites: SgfI-MluI

Cloning Scheme:



ACCN: NM_001003808

ORF Size: 915 bp

OTI Disclaimer: The molecular sequence of this clone aligns with the gene accession number as a point of reference only. However, individual transcript sequences of the same gene can differ through naturally occurring variations (e.g. polymorphisms), each with its own valid existence. This clone is substantially in agreement with the reference, but a complete review of all prevailing variants is recommended prior to use. [More info](#)

OTI Annotation: This clone was engineered to express the complete ORF with an expression tag. Expression varies depending on the nature of the gene.

Components: The ORF clone is ion-exchange column purified and shipped in a 2D barcoded Matrix tube containing 10ug of transfection-ready, dried plasmid DNA (reconstitute with 100 ul of water).

Reconstitution Method:

1. Centrifuge at 5,000xg for 5min.
2. Carefully open the tube and add 100ul of sterile water to dissolve the DNA.
3. Close the tube and incubate for 10 minutes at room temperature.
4. Briefly vortex the tube and then do a quick spin (less than 5000xg) to concentrate the liquid at the bottom.
5. Store the suspended plasmid at -20°C. The DNA is stable for at least one year from date of shipping when stored at -20°C.

RefSeq: [NM_001003808.1](#), [NP_001003808.1](#)

RefSeq Size: 2824 bp

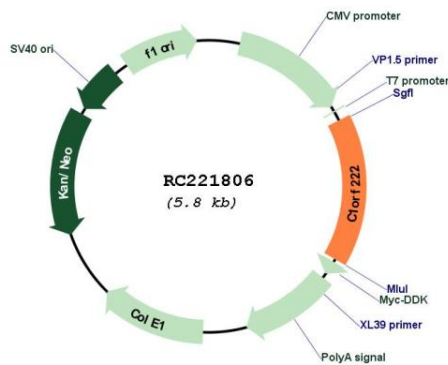
RefSeq ORF: 917 bp

Locus ID: 339457

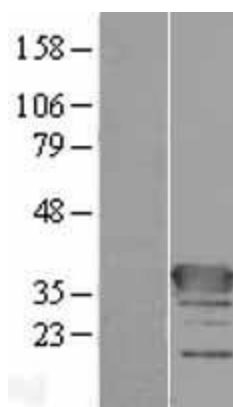
Cytogenetics: 1p36.33

MW: 33.2 kDa

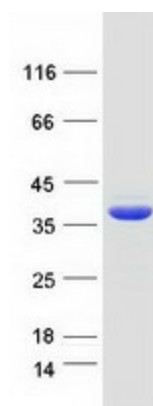
Product images:



Circular map for RC221806



Western blot validation of overexpression lysate (Cat# [LY424019]) using anti-DDK antibody (Cat# [TA50011-100]). Left: Cell lysates from untransfected HEK293T cells; Right: Cell lysates from HEK293T cells transfected with RC221806 using transfection reagent MegaTran 2.0 (Cat# [TT210002]).



Coomassie blue staining of purified C1orf222 protein (Cat# [TP321806]). The protein was produced from HEK293T cells transfected with C1orf222 cDNA clone (Cat# RC221806) using MegaTran 2.0 (Cat# [TT210002]).