

## Product datasheet for RC221802

### PCID2 (NM\_018386) Human Tagged ORF Clone

#### Product data:

Product Type:	Expression Plasmids
Product Name:	PCID2 (NM_018386) Human Tagged ORF Clone
Tag:	Myc-DDK
Symbol:	PCID2
Synonyms:	F10
Mammalian Cell Selection:	Neomycin
Vector:	pCMV6-Entry (PS100001)
E. coli Selection:	Kanamycin (25 ug/mL)
ORF Nucleotide Sequence:	>RC221802 representing NM_018386 Red=Cloning site Blue=ORF Green=Tags(s)

TTTTGTAATACGACTCACTATAGGGCGGCCGGAATTCGTCGACTGGATCCGGTACCGAGGAGATCTGCC  
GCC**CGATCGCC**

ATGGCGCACATTACCATTAACCACTACCTGCAGCAGGTGTACGAAGCCATCGACAGCAGAGATGGAGCAT  
CTTGTGCAGAGTTGGTGTCTTTAAACATCCTCATGTTGCAAACCCACGACTTCAAATGGCCTCTCCAGA  
GGAGAAGTGTCAACAAGTCTTGGAAACCCCTTATGATGAAATGTTGCAGCTCATTTAAGGTGCACCTTAT  
GCAGTGGGAATCATGACTTCATAGAGGCATACAAGTCCAGACCGTGATAGTCCAATCATTCTTGGCAG  
CATTCCAGGCCACAAAGAAGAAAAGTGGCTCTGCCTGTATGATGAGTACCGCTTGACCTTCGAGT  
GTTTGCCAATAATGCAGATCAACAGTTGGTAAAGAAAGGAAAAAGCAAAGTTGGGGACATGTTGGAAAA  
GCAGCAGAGTTACTGATGAGCTGTTCCGGTCTGTGCCAGCGACACCCGTGCTGGTATAGAGGACTCTA  
AGAAGTGGGGCATGCTGTTTCTGGTGAACCAGCTGTTAAATCTACTTCAAGATCAACAACTCCATTT  
ATGTAAACCCCTAATTAGAGCAATTGACAGCTCAAACCTGAAAGACGATTACAGCACTGCACAGAGAGTA  
ACATAAAATACTACGTTGGACGCAAGGCTATGTTGACAGCGATTTAAGCAAGCTGAGGAGTACCTGT  
CATTTGCCTTTGAGCATTGTCACCGTCTAGTCAGAAGAACAAGGATGATTCTGATCTATTTGCTTCC  
AGTAAAAATGCTATTGGGTACATGCCACTGTGGAGCTCCTGAAAAAGTATCACCTGATGCAGTTTGGC  
GAAGTAACCAAGCTGTGAGCGAGGGCAACCTGCTGCTGCAGAGGCGTGGGAAGCAGCAGAGGCCCT  
TCTTCATTCGCTGCGGAATCTTCCCTCATCCTGGAGAAGCTGAAGATCATCACCTACAGGAACCTCTTAA  
GAAAGTGTATTTGTTACTGAAAACACACCAGCTGTCTCTGGATGCTTTTCTGGTTGCCTTGAAGTTCATG  
CAGGTGGAGGACGTGGACATTGACGAAGTTCAGTGTATTCTGGCTAACTGATATACATGGGACACGTCA  
AAGGCTACATATCGCATCAGCATCAGAAGCTGGTGGTCAGCAAGCAGAACCATTTCCTCCCTGTCCAC  
GGTGTGT

**ACGCGT**ACGCGGCCGCTCGAGCAGAAAACCTCATCTCAGAAGAGGATCTGGCAGCAAATGATATCCTGGATT  
ACAAGGATGACGACGATAAAGTTTAA



**Protein Sequence:** >RC221802 representing NM\_018386  
Red=Cloning site Green=Tags(s)

MAHITINQYLQQVYEAIDSRDGASCAELVSFKHPHVNPRQLMASPEEKCCQVLEPPYDEMFAAHLRCTY  
 AVGNHDFIEAYKCQTVIVQSFLRAFQAHKEENWALPVMYAVALDLRVFANNADQQLVKKGKSKVGDMLEK  
 AAELLMSCFRVCASDTRAGIEDSKKWGMLFLVNQLFKIYFKINKLHLCPLIRAIDSSNLKDDYSTAQRV  
 TYKYYVGRKAMFDSDFKQAEYLSFAFEHCHRSSQKNRMILYLLPVKMLLGHMPTVELLKKYHLMQFA  
 EVTRAVSEGNLLLLHEALAKHEAFFIRCGIFLILEKLIITYRNLFKKVYLLLLKTHQLSLDAFLVALKFM  
 QVEDVDIDEVQCILANLIYMGHVKGYSHQHQKLVVSKQNPFPPLSTVC

TRTRPLEQKLISEEDLAANDILDYKDDDDKV

**Chromatograms:** [https://cdn.origene.com/chromatograms/mk8040\\_c02.zip](https://cdn.origene.com/chromatograms/mk8040_c02.zip)

**Restriction Sites:** SgfI-MluI

**Cloning Scheme:**



**ACCN:** NM\_018386

**ORF Size:** 1197 bp

**OTI Disclaimer:** The molecular sequence of this clone aligns with the gene accession number as a point of reference only. However, individual transcript sequences of the same gene can differ through naturally occurring variations (e.g. polymorphisms), each with its own valid existence. This clone is substantially in agreement with the reference, but a complete review of all prevailing variants is recommended prior to use. [More info](#)

**OTI Annotation:** This clone was engineered to express the complete ORF with an expression tag. Expression varies depending on the nature of the gene.

**Components:** The ORF clone is ion-exchange column purified and shipped in a 2D barcoded Matrix tube containing 10ug of transfection-ready, dried plasmid DNA (reconstitute with 100 ul of water).

**Reconstitution Method:**

1. Centrifuge at 5,000xg for 5min.
2. Carefully open the tube and add 100ul of sterile water to dissolve the DNA.
3. Close the tube and incubate for 10 minutes at room temperature.
4. Briefly vortex the tube and then do a quick spin (less than 5000xg) to concentrate the liquid at the bottom.
5. Store the suspended plasmid at -20°C. The DNA is stable for at least one year from date of shipping when stored at -20°C.

**RefSeq:** [NM\\_018386.5](#)

**RefSeq Size:** 1786 bp

**RefSeq ORF:** 1200 bp

**Locus ID:** 55795

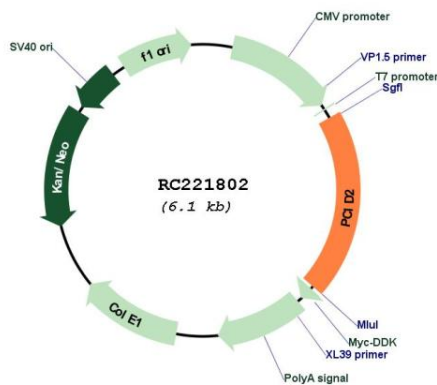
**UniProt ID:** [Q5JVF3](#)

**Cytogenetics:** 13q34

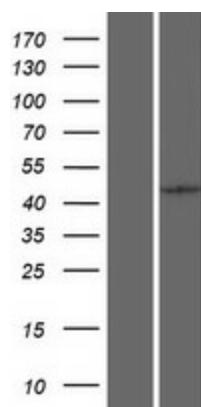
**MW:** 45.8 kDa

**Gene Summary:** This gene encodes a component of the TREX-2 complex (transcription and export complex 2), which regulates mRNA export from the nucleus. This protein regulates expression of Mad2 mitotic arrest deficient-like 1, a cell division checkpoint protein. This protein also interacts with and stabilizes Brca2 (breast cancer 2) protein. Alternative splicing results in multiple transcript variants. [provided by RefSeq, Mar 2016]

### Product images:



Circular map for RC221802



Western blot validation of overexpression lysate (Cat# [LY413085]) using anti-DDK antibody (Cat# [TA50011-100]). Left: Cell lysates from untransfected HEK293T cells; Right: Cell lysates from HEK293T cells transfected with RC221802 using transfection reagent MegaTran 2.0 (Cat# [TT210002]).