

## Product datasheet for **RC221800**

### **ABLIM3 (NM\_014945) Human Tagged ORF Clone**

#### **Product data:**

Product Type:	Expression Plasmids
Product Name:	ABLIM3 (NM_014945) Human Tagged ORF Clone
Tag:	Myc-DDK
Symbol:	ABLIM3
Synonyms:	HMFN1661
Mammalian Cell Selection:	Neomycin
Vector:	pCMV6-Entry (PS100001)
E. coli Selection:	Kanamycin (25 ug/mL)



[View online »](#)

ORF Nucleotide  
Sequence:

>RC221800 representing NM\_014945  
Red=Cloning site Blue=ORF Green=Tags(s)

TTTTGTAATACGACTCACTATAGGGCGGCCGGAATTCGTCGACTGGATCCGGTACCGAGGAGATCTGCC  
GCC**CGGATCGCC**

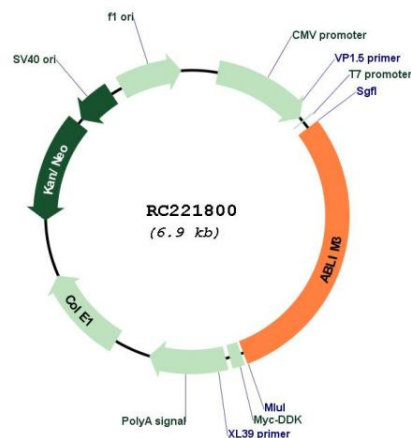
ATGAACACTAGCATTCTTATCAGCAGAATCCTTACAATCCACGGGGCAGCTCCAATGTCATCCAGTGCT  
ACCGCTGTGGAGACACCTGCAAAGGGGAAGTGGTCCGCGTGCACAACAACCACTTCCACATCAGATGCTT  
CACCTGTCAAGTATGTGGCTGTGGCCTGGCCAGTCAGGCTTCTTCTCAAGAACCAGGAGTACATCTGC  
ACCCAGGACTACCAGCAACTCTATGGCACCCGCTGTGACAGCTGCCGGGACTTCATCACAGGCGAAGTCA  
TCTCGGCCCTGGGCCCACTTACCACCCCAAGTCTTCTGTGACAGCTTGTGCAGGAAGCCTTCCCCAT  
TGGAGACAAGGTGACCTTCAGCGGTAAGAATGTGTGTGCCAACGTGCTCCCAGTCCATGGCCAGCAGT  
AAGCCCATCAAGATTCGTGGACCAAGCCACTGTGCCGGGTGCAAGGAGGAGATCAAGCACGGCCAGTCAC  
TCCTGGCTCTGGACAAGCAGTGGCACGTCAGTCTTCAAGTCCAGACCTGCAGCGTCATCCTCACCGG  
GGAGTATATCAGCAAGGATGGTGTCCATACTGTGAGTCCGACTACCATGCCAGTTTGGCATTAAATGT  
GAGACTTGTGACCGATACATCAGTGGCAGAGTCTTGGAGGCAGGAGGGAAGCACTACCACCCAACCTGTG  
CCAGGTGTGTACGCTGCCACCAGATGTTACCCGAAGGAGAGGAAATGTACCTCACAGGTTCCGAGGTTTG  
GCACCCCATCTGCAAACAGGCAGCCCGGCAGAGAAGAAGTTAAAGCATAGACGGACATCTGAAACCTCC  
ATCTCACCCCTGGATCCAGCATTGGGTCAACCAACCGAGTCACTGCGCTAAAGTGGATAATGAGATCC  
TTAATTACAAAGACCTGGCGGCTCTCCCAAGGTTAAGTCTATCTACGAGGTACAACGCCCCGACCTCAT  
TTCTATGAGCCTCATTCCAGATACATGTCGACGAGATGCTGGAGAGATGTGGCTATGGAGAGTCGCTG  
GGAACATTATCTCCCTACTCCCAGGACATCTACGAGAACCTGGACCTCCGGCAGAGACGGCCCTCCAGCC  
CGGGGTACATAGACTCCCCACCTACAGCCGGCAGGGCATGTCCCCACCTTCTCCGCTCACCTACCA  
CTACTACCGCTCTGGGCCCGAGAGTGGCCGGAGCTCTCCATACCATAGCCAGTTAGATGTGAGGTCTCC  
ACTCCAACCTCTTACCAGGCTCCCAAGCACTTTCACATCCCAGCTGGAGACAGTAACATCTACCGGAAAC  
CCCCGATCTACAAACGGCATGGTGATTTGTCTACAGCAACCAAGAGCAAAAACAAGTGAAGACATCAGCCA  
GACCTCCAAGTACAGTCCCATCTACTCGCCAGACCCCTACTATGCTTCGGAGTCTGAGTACTGGACCTAC  
CATGGGTCCCCAAAGTGCCCGAGCCAGAAGTTCTCGTCTGGAGGAGAGGAGGATGATTTTGACCGCA  
GCATGCACAAGCTCCAAAGTGAATTGGCCGGCTGATTCTGAAGGAAGAAATGAAGGCCCGGTCGAGCTC  
CTATGCAGATCCCTGGACCCCTCCCGGAGCTCCACCAGCAGCCGGAAGCCCTGCACACAGCTGGCTAT  
GAGATGTCCCTCAATGGCTCCCCTCGGTGCACTACCTGGCTGACAGTATCCTCTCATCTCCAAATCTG  
CCTCCCTGCCTGCTACCGAAGAAATGGGCTGCACAGGACACCCAGCGCAGACCTTCCACTACGACAG  
CATGAACGCAGTCAACTGGGCATGCGAGAGTACAAGATCTACCTTATGAACTGCTGCTGGTGACTACA  
AGAGGAAGAAACCGACTGCCAAGGATGTAGACAGGACCCGTTTAGAGCGCCACCTGTCCCAGGAAGAGT  
TCTACCAAGTCTTTGGCATGACCATCTCTGAGTTTGACCGGTGGCCCTCTGGAAGAGGAATGAACTGAA  
GAAGCAAGCCCGGCTGTTC

**ACGCGT**ACGCGGCCGCTCGAGCAGAACTCATCTCAGAAGAGGATCTGGCAGCAAATGATATCCTGGATT  
ACAAGGATGACGACGATAAGGTTTAA

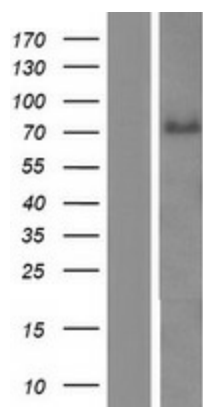


<b>Components:</b>	The ORF clone is ion-exchange column purified and shipped in a 2D barcoded Matrix tube containing 10ug of transfection-ready, dried plasmid DNA (reconstitute with 100 ul of water).
<b>Reconstitution Method:</b>	<ol style="list-style-type: none"> <li>1. Centrifuge at 5,000xg for 5min.</li> <li>2. Carefully open the tube and add 100ul of sterile water to dissolve the DNA.</li> <li>3. Close the tube and incubate for 10 minutes at room temperature.</li> <li>4. Briefly vortex the tube and then do a quick spin (less than 5000xg) to concentrate the liquid at the bottom.</li> <li>5. Store the suspended plasmid at -20°C. The DNA is stable for at least one year from date of shipping when stored at -20°C.</li> </ol>
<b>RefSeq:</b>	<u><a href="#">NM_014945.5</a></u>
<b>RefSeq Size:</b>	4335 bp
<b>RefSeq ORF:</b>	2052 bp
<b>Locus ID:</b>	22885
<b>UniProt ID:</b>	<u><a href="#">O94929</a></u>
<b>Cytogenetics:</b>	5q32
<b>Domains:</b>	LIM, VHP
<b>Protein Pathways:</b>	Axon guidance
<b>MW:</b>	78.3 kDa
<b>Gene Summary:</b>	This gene encodes a member of the actin-binding LIM (abLIM) family of proteins. These proteins are characterized by an N-terminal LIM domain and a C-terminal dematin-like domain. The encoded protein interacts with actin filaments and may be a component of adherens junctions in several cell types. A variant of this gene may be associated with pain sensitivity in male human patients. [provided by RefSeq, Sep 2016]

### Product images:



Circular map for RC221800



Western blot validation of overexpression lysate (Cat# [LY414911]) using anti-DDK antibody (Cat# [TA50011-100]). Left: Cell lysates from untransfected HEK293T cells; Right: Cell lysates from HEK293T cells transfected with RC221800 using transfection reagent MegaTran 2.0 (Cat# [TT210002]).