

Product datasheet for **RC221799**

Sec8 (EXOC4) (NM_001037126) Human Tagged ORF Clone

Product data:

Product Type:	Expression Plasmids
Product Name:	Sec8 (EXOC4) (NM_001037126) Human Tagged ORF Clone
Tag:	Myc-DDK
Symbol:	Sec8
Synonyms:	SEC8; SEC8L1; Sec8p
Mammalian Cell Selection:	Neomycin
Vector:	pCMV6-Entry (PS100001)
E. coli Selection:	Kanamycin (25 ug/mL)



[View online »](#)

ORF Nucleotide Sequence:

>RC221799 representing NM_001037126
 Red=Cloning site Blue=ORF Green=Tags(s)

TTTTGTAATACGACTCACTATAGGGCGGCCGGAATTCGTCGACTGGATCCGGTACCGAGGAGATCTGCC
 GCC**CGCATCGCC**

ATGGCGGCAGAAGCAGCTGGTGGGAAATACAGAAGCACAGTCAGCAAAGCAAAGACCCCTCGGGGCTGC
 TCATCTCTGTGATCAGGACTCTGTCTACTAGTGACGATGTCGAAGACAGGGAAAAATGAAAAGGGTCGCCT
 TGAAAGAAGCCTACGAGAAATGTGACCGTGACCTGGATGAATTGATTGTACAGCACTACACAGAATTGACG
 ACAGCCATTTCGCACATACCAGAGCATCACAGAGCGCATCACTAACTCCCGAAAATAAAATAAAGCAGGTAA
 AAGAGAACCTGCTTTCATGCAAGATGCTGCTGCACTGCAAACGGGATGAGCTTCGGAAAATGTGGATTGA
 AGGAATTGAGCATAAGCATGTCTGAACTTGTGGATGAAATTGAGAATATCAAGCAAGTGCCTCAAAG
 CTGGAACAGTGCATGGCCAGCAAGCACTATCTCAGTGCCACTGACATGTTGGTGCAGCAGTTGAGTCTT
 TGGAGGGCCCCCTGCTCCAGGTGGAAGGACTGAGTGACCTTCGACTAGAGCTTCACAGCAAGAAGATGAA
 CCTTCACTTGGTTCTCATAGATGAACTACACCGGCACCTGTACATCAAATCGACTAGCCGAGTTGTGCAG
 CGTAACAAGGAAAAAGGGAAAAATCAGCTCCCTCGTGAAGATGCTTCTGTTCTCTGATTGATGTTACAA
 ACCTCCCTACTCCTCGAAAATTCCTTGATACCTCTCACTATTCTACTGCTGGAAGCTCAAGTGTGAGGGA
 GATAAATCTGCAGGACATCAAGGAAGATTTAGAATTGGATCCAGAGGAAAACAGCACCCCTGTTTATGGGT
 ATCCTCATTAAAGGGCTTGGCGAAACTGAAGAAGATCCCAGAAACAGTTAAGGCAATCATAGAGCGCTTGG
 AGCAGGAGTTGAAGCAAATTTGTGAAGAGGTCTACAACCCAGGTGGCAGACAGTGGCTATCAGCGGGGGA
 GAACGTTACTGTGGAGAACCAACCAAGTTGCTTCTAGAAGTCTGGAGTTACTGTTTGACAAGTTAAT
 GCTGTAGCCGCTGCACACTCTGTGGTCTGGGATACCTGCAGGACACTGTAGTGACTCCACTGACTCAGC
 AGGAAGATATCAAAGTATGATATGGCAGATGTATGGGTGAAGATCCAAGATGTTCTACAGATGCTATT
 AACTGAGTACTTGGATATGAAAAATACTCGTACGGCCTCTGAACCATCAGCTCAACTAAGCTATGCCAGC
 ACTGGACGAGAGTTTGCAGCCTTTTTTGCACAAGAAACCTCAAAGGCCAAAAAATTCTTTTTCAAGT
 TCGAATCGTCTCCCATGCCATCAGTATGAGCGCCTATCTGCGAGAACAGAGAAGGGAGCTCATAGTCG
 GAGTGGAGAAGTCAAGGG

ACGCGTACGCGGCCGCTCGAGCAGAAACTCATCTCAGAAGAGGATCTGGCAGCAAATGATATCCTGGATT
 ACAAGGATGACGACGATAAGGTTTAA

Protein Sequence:

>RC221799 representing NM_001037126
 Red=Cloning site Green=Tags(s)

MAAEAAGKRYRSTVSKSKDPSGLLISVIRTLSTSDVDRENEKGRLEEAYEKCDRDLDELIVQHYTELT
 TAIRTYQSITERITNSRNKIKQVKENLLSCKMLLHCKRDELRLKWIEGIEHKHVLNLLDEIENIKQVPQK
 LEQCMASKHYLSATDMLVSAVESLEGPLLQVEGLSDLRLELHSHKMMNLHLVLI DELHRHL YIKSTSRVQ
 RNKEKGISSLVKDASVPLIDVTNLPTRKFLDTSHYSTAGSSSVREINLQDIKEDLELDPEENSTLFMG
 ILIKGLAKLKKIPETVKAIIERLEQELKQIVKRSTTQVADSGYQRGENVTVENQPRLLELLELLELFDKFN
 AVAAAHSVVLGYLQDTVVTPLTQQEDIKLYDMADVWVKIQDVLQMLL TEYLDMKNTRTASEPSAQLSYAS
 TGREFAAFFAKKKPQRPKNSLFKFESSHAISMSAYLREQRRELYSRSGELQG

TRTRPLEQKLI SEEDLAANDILDYKDDDDKV

Chromatograms:

https://cdn.origene.com/chromatograms/mk6503_h11.zip

Restriction Sites:

Sgfl-Mlul

Cloning Scheme:



ACCN: NM_001037126

ORF Size: 1419 bp

OTI Disclaimer: The molecular sequence of this clone aligns with the gene accession number as a point of reference only. However, individual transcript sequences of the same gene can differ through naturally occurring variations (e.g. polymorphisms), each with its own valid existence. This clone is substantially in agreement with the reference, but a complete review of all prevailing variants is recommended prior to use. [More info](#)

OTI Annotation: This clone was engineered to express the complete ORF with an expression tag. Expression varies depending on the nature of the gene.

Components: The ORF clone is ion-exchange column purified and shipped in a 2D barcoded Matrix tube containing 10ug of transfection-ready, dried plasmid DNA (reconstitute with 100 ul of water).

- Reconstitution Method:
1. Centrifuge at 5,000xg for 5min.
 2. Carefully open the tube and add 100ul of sterile water to dissolve the DNA.
 3. Close the tube and incubate for 10 minutes at room temperature.
 4. Briefly vortex the tube and then do a quick spin (less than 5000xg) to concentrate the liquid at the bottom.
 5. Store the suspended plasmid at -20°C. The DNA is stable for at least one year from date of shipping when stored at -20°C.

RefSeq: [NM_001037126.1](#), [NP_001032203.1](#)

RefSeq Size: 1620 bp

RefSeq ORF: 1422 bp

Locus ID: 60412

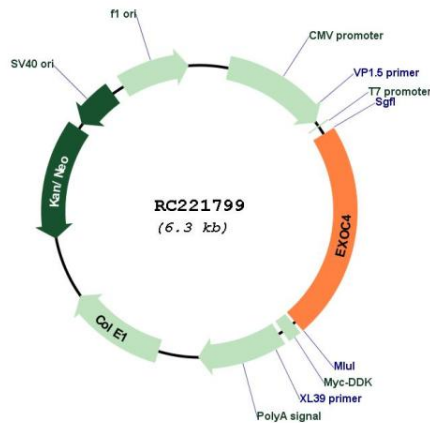
Cytogenetics: 7q33

Protein Pathways: Tight junction

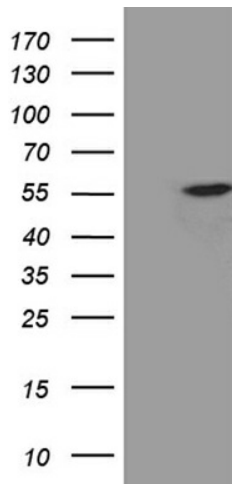
MW: 53.7 kDa

Gene Summary: The protein encoded by this gene is a component of the exocyst complex, a multiple protein complex essential for targeting exocytic vesicles to specific docking sites on the plasma membrane. Though best characterized in yeast, the component proteins and functions of exocyst complex have been demonstrated to be highly conserved in higher eukaryotes. At least eight components of the exocyst complex, including this protein, are found to interact with the actin cytoskeletal remodeling and vesicle transport machinery. The complex is also essential for the biogenesis of epithelial cell surface polarity. Alternate transcriptional splice variants, encoding different isoforms, have been characterized. [provided by RefSeq, Jul 2008]

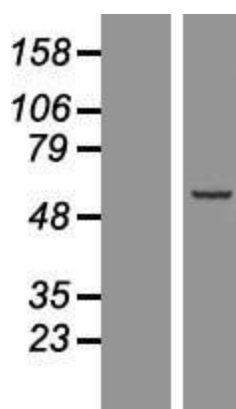
Product images:



Circular map for RC221799



HEK293T cells were transfected with the pCMV6-ENTRY control (Cat# [PS100001], Left lane) or pCMV6-ENTRY EXOC4 (Cat# RC221799, Right lane) cDNA for 48 hrs and lysed. Equivalent amounts of cell lysates (5 ug per lane) were separated by SDS-PAGE and immunoblotted with anti-EXOC4 (1:2000) (Cat# [TA811243]). Positive lysates [LY422147] (100ug) and [LC422147] (20ug) can be purchased separately from OriGene.



Western blot validation of overexpression lysate (Cat# [LY422147]) using anti-DDK antibody (Cat# [TA50011-100]). Left: Cell lysates from untransfected HEK293T cells; Right: Cell lysates from HEK293T cells transfected with RC221799 using transfection reagent MegaTran 2.0 (Cat# [TT210002]).