

Product datasheet for RC221789

IL28 Receptor alpha (IFNLR1) (NM_173065) Human Tagged ORF Clone

Product data:

Product Type:	Expression Plasmids
Product Name:	IL28 Receptor alpha (IFNLR1) (NM_173065) Human Tagged ORF Clone
Tag:	Myc-DDK
Symbol:	IL28 Receptor alpha
Synonyms:	CRF2/12; IFNLR; IL-28R1; IL28RA; LICR2
Mammalian Cell Selection:	Neomycin
Vector:	pCMV6-Entry (PS100001)
E. coli Selection:	Kanamycin (25 ug/mL)
ORF Nucleotide Sequence:	>RC221789 ORF sequence Red=Cloning site Blue=ORF Green=Tags(s)

TTTTGTAATACGACTCACTATAGGGCGCCGGGAATTCGTCGACTGGATCCGGTACCGAGGAGATCTGCC
GCC**CGATCGCC**

ATGGCGGGGCCGAGCGCTGGGGCCCCCTGCTCCTGTGCCTGCTGCAGGCCGCTCCAGGGAGGCCCGTC
TGGCCCTCCCCAGAATGTGACGCTGCTCTCCAGAATTGACGCGTACCTGACATGGCTCCAGGGCT
TGGCAACCCCGAGGATGTGACCTATTTTGTGGCCTATCAGAGCTCTCCACCCGTAGACGGTGGCGGAA
GTGGAAGAGTGTGCGGGAACCAAGGAGCTGCTATGTTCTATGATGTGCCTGAAGAAACAGGACCTGTACA
ACAAGTTCAAGGACGCGTGCAGCGGTTTCTCCAGCTCCAAGTCCCCTGGGTGGAGTCCGAATACCT
GGATTACCTTTTTGAAGTGGAGCCGGCCCCACCTGTCTGGTGCCTCACCAGACGGAGGAGATCCTGAGT
GCCAATGCCACGTACCAGCTGCCCCCTGCATGCCCCACTGGATCTGAAGTATGAGGTGGCATTCTGGA
AGGAGGGGGCCGAAACAAGACCCTATTTCCAGTCACTCCCCATGGCCAGCCAGTCCAGATCACTCTCCA
GCCAGCTGCCAGCAACACCACTGCCTCAGTGCCAGAACCATCTACACGTTCAAGTGTCCCGAAATACAGC
AAGTCTCTAAGCCACCTGCTTCTGCTGGAGGTCAGGACTTTTCTGGACACACACCCCTGTGGCA
ACCTTTCAGCCAGCAGACCAGAGTCCGTGAA

AG**CGGACCG**ACGCGTACGCGCCGCTCGAGCAGAACTCATCTCAGAAGAGGATCTGGCAGCAAATGATATCC
TGGATTACAAGGATGACGACGATAAGGTTTAA



[View online »](#)

Protein Sequence: >RC221789 protein sequence
Red=Cloning site Green=Tags(s)

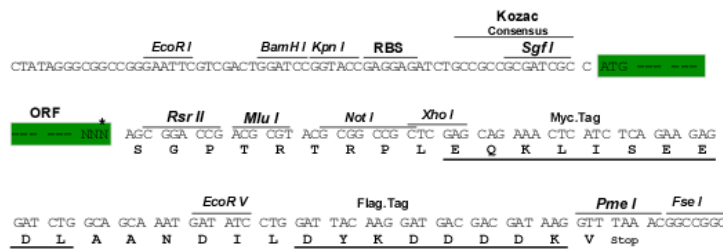
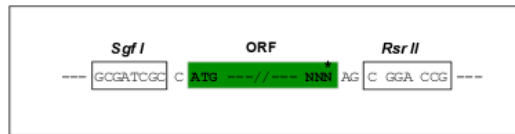
MAGPERWGPLLLCLLQAAPGRPRLAPPQNVTLLSQNFVYLTWLPGLGNPQDVTFVAYQSSPTRRRWRE
VEECAGTKELLCSMMCLKKQDLYNKFKGRVRTVSPSSKSPWVESEYLDYLFEVAPPVLVLTQTTEEILS
ANATYQLPPCMPPLDLKYEVAFWKEGAGNKTLFPVTPHGQPVQITLQPAASEHHCLSARTIYTFVSPKYK
KFSKPTCFLLEVPGLFWHTHTPCGNLSAQQTRVRE

SGPTRTRPLEQKLISEEDLAANDILDYKDDDDKV

Restriction Sites: SgfI-RsrII

Cloning Scheme:

Cloning sites used for ORF Shuttling:



* The last codon before the Stop codon of the ORF

ACCN: NM_173065

ORF Size: 732 bp

OTI Disclaimer: The molecular sequence of this clone aligns with the gene accession number as a point of reference only. However, individual transcript sequences of the same gene can differ through naturally occurring variations (e.g. polymorphisms), each with its own valid existence. This clone is substantially in agreement with the reference, but a complete review of all prevailing variants is recommended prior to use. [More info](#)

OTI Annotation: This clone was engineered to express the complete ORF with an expression tag. Expression varies depending on the nature of the gene.

Components: The ORF clone is ion-exchange column purified and shipped in a 2D barcoded Matrix tube containing 10ug of transfection-ready, dried plasmid DNA (reconstitute with 100 ul of water).

Reconstitution Method:

1. Centrifuge at 5,000xg for 5min.
2. Carefully open the tube and add 100ul of sterile water to dissolve the DNA.
3. Close the tube and incubate for 10 minutes at room temperature.
4. Briefly vortex the tube and then do a quick spin (less than 5000xg) to concentrate the liquid at the bottom.
5. Store the suspended plasmid at -20°C. The DNA is stable for at least one year from date of shipping when stored at -20°C.

RefSeq: [NM_173065.3](#)

RefSeq Size: 4432 bp

RefSeq ORF: 735 bp

Locus ID: 163702

UniProt ID: [Q8IU57](#)

Cytogenetics: 1p36.11

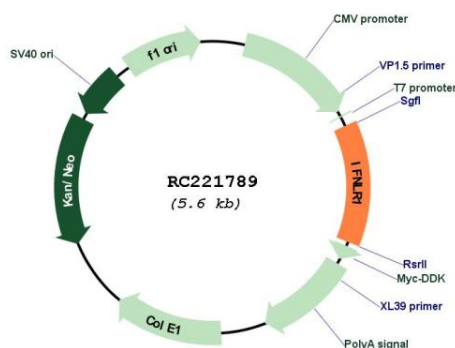
Protein Families: Druggable Genome, Transmembrane

Protein Pathways: Cytokine-cytokine receptor interaction, Jak-STAT signaling pathway

MW: 27.5 kDa

Gene Summary: The protein encoded by this gene belongs to the class II cytokine receptor family. This protein forms a receptor complex with interleukin 10 receptor, beta (IL10RB). The receptor complex has been shown to interact with three closely related cytokines, including interleukin 28A (IL28A), interleukin 28B (IL28B), and interleukin 29 (IL29). The expression of all three cytokines can be induced by viral infection. The cells overexpressing this protein have been found to have enhanced responses to IL28A and IL29, but decreased response to IL28B. Three alternatively spliced transcript variants encoding distinct isoforms have been reported. [provided by RefSeq, Jul 2008]

Product images:



Circular map for RC221789