

Product datasheet for **RC221786**

TNFRSF19L (RELT) (NM_032871) Human Tagged ORF Clone

Product data:

Product Type:	Expression Plasmids
Product Name:	TNFRSF19L (RELT) (NM_032871) Human Tagged ORF Clone
Tag:	Myc-DDK
Symbol:	TNFRSF19L
Synonyms:	A13C; TNFRSF19L; TRLT
Mammalian Cell Selection:	Neomycin
Vector:	pCMV6-Entry (PS100001)
E. coli Selection:	Kanamycin (25 ug/mL)



[View online »](#)

ORF Nucleotide
Sequence:

>RC221786 representing NM_032871
Red=Cloning site Blue=ORF Green=Tags(s)

TTTTGTAATACGACTCACTATAGGGCGGCCGGAATTCGTCGACTGGATCCGGTACCGAGGAGATCTGCC
GCCGCGATCGCC

ATGAAGCCAAGTCTGCTGTGCCGCCCCCTGTCCTGCTTCCTTATGCTGCTGCCCTGGCCTCTCGCCACCC
TGACATCAACAACCCCTTTGGCAGTGCCACCTGGGGAGGAGCCGACCTGGACCCAGGGCAGGGCATT
ATGCAGGCCCTGCCCCAGGCACCTTCTCAGCTGCATGGGGCTCCAGCCATGCCAGCCCCATGCCCGT
TGCAGCCTTTGGAGGAGGCTGGAGGCCAGGTGGGCATGGCAACTCGAGATACACTCTGTGGAGACTGCT
GGCCTGGGTGTTTGGGCCTTGGGGGTTCCCCGCTTCCATGTCAACCATGTTCTGGGCACCTCTGGG
TACTCATGGCTGTGATGAGTGGGGCGGGCCGACGTGGCGTGGAGGTGGCAGCAGGGGCCAGCAGC
GGTGGTGAGACACGGCAGCCTGGGAACGGCACCCGGGAGGTGGCCAGAGGAGACAGCCGCCAGTACG
CGGTCATCGCCATCGTCCCTGTCTTCTGCCTCATGGGGCTGTTGGGCATCCTGGTGTCAACCTCCTCAA
GCGGAAGGGCTACCACTGCACGGCGCACAAAGAGGTGGGCCCGGCCCTGGAGGTGGAGGCAGTGGAAATC
AACCTGCCTACCGACTGAGGATGCCAATGAGGACACCATGGGGTCTGGTGCCTTGATCACAGAGA
AGAAAGAGAATGCTGCGGCCCTGGAGGAGCTGCTGAAAGAGTACCACAGCAAACAGCTGGTGCAGACGAG
CCACAGGCCTGTGTCAAAGCTGCCGCCAGCGCCCCGAACGTGCCACACATCTGCCCGCACCGCCACCAT
CTCCACACCGTGCAGGGCCTGGCCTCGCTCTTGGCCCCCTGTGCTCCCCTGTAGCCAGAAGAAGTGGC
CCGAGGTGCTGCTGTCCCTGAGGCTGTAGCCGCCACTACTCTGTTCCCAGCCTTCTGCCTAACCCGAC
CAGGGTCCCAAGGCCGGGGCAAGGCAGGGCGTCAAGGGCAGATCACCATTTGTCTGTGGCAGGTTC
CGCGTGGCTCGAATTCTGAGCAGCGGACAAGTCAATGGTGTCTGAGGTGAAGACCATCACGGAGGCTG
GGCCCTCGTGGGTGATCTCCCTGACTCCCCACGCCTGGCCTCCCCCTGAGCAGCAGGCCCTGCTAGG
AAGTGGCGGAAGCCGTACAAAGTGGCTGAAGCCCCAGCAGAGAACAAGGCCGAGGAGAACCCTATGTG
GTCCGGCTAAGTGAAGAACCTGGTCATC

ACGCGTACGCGGCCGCTCGAGCAGAACTCATCTCAGAAGAGGATCTGGCAGCAAATGATATCCTGGATT
ACAAGGATGACGACGATAAGGTTTAA

Protein Sequence:

>RC221786 representing NM_032871
Red=Cloning site Green=Tags(s)

MKPSLLCRPLSCFLMLLPWPLATLTSTTLWQCPPGEEPDLDPGQGTLCRPCPPGTFSAAWGSSPCQPHAR
CSLWRRLEAQVGMATRDTLCGDCWPGWFGPWGVPVPCQPCSWAPLGHGCEWGRARRRGVEVAAGASS
GGETRQPGNGTRAGGPEETAQYAVIAIIPVFCLMGLLGLVCNLLKRGYHCTAHKEVGPGGGGSGI
NPAYRTEDANEDTIGVLVRLITEKKENAAALEELLKEYHSKQLVQTSRHPVSKLPPAPPNVPHICPHRHH
LHTVQGLASLSGPCCSRCSQKKWPEVLLSPEAVAATTPVPSLLPNPTRVPKAGAKAGRQGEITILSVGRF
RVARIPEQRTSSMVSEVKTITEAGPSWGDLPDSPQPLPPEQALLGSGGSRTKWLKPPAENKAEENRYV
VRLSESNLVI

TRTRPLEQKLISEEDLAANDILDYKDDDDKV

Chromatograms:

https://cdn.origene.com/chromatograms/mk6361_f09.zip

Restriction Sites:

SgfI-MluI

Cloning Scheme:


ACCN: NM_032871

ORF Size: 1290 bp

OTI Disclaimer: The molecular sequence of this clone aligns with the gene accession number as a point of reference only. However, individual transcript sequences of the same gene can differ through naturally occurring variations (e.g. polymorphisms), each with its own valid existence. This clone is substantially in agreement with the reference, but a complete review of all prevailing variants is recommended prior to use. [More info](#)

OTI Annotation: This clone was engineered to express the complete ORF with an expression tag. Expression varies depending on the nature of the gene.

Components: The ORF clone is ion-exchange column purified and shipped in a 2D barcoded Matrix tube containing 10ug of transfection-ready, dried plasmid DNA (reconstitute with 100 ul of water).

Reconstitution Method:

1. Centrifuge at 5,000xg for 5min.
2. Carefully open the tube and add 100ul of sterile water to dissolve the DNA.
3. Close the tube and incubate for 10 minutes at room temperature.
4. Briefly vortex the tube and then do a quick spin (less than 5000xg) to concentrate the liquid at the bottom.
5. Store the suspended plasmid at -20°C. The DNA is stable for at least one year from date of shipping when stored at -20°C.

RefSeq: [NM_032871.3](#), [NP_116260.2](#)

RefSeq Size: 3520 bp

RefSeq ORF: 1293 bp

Locus ID: 84957

UniProt ID: [Q969Z4](#)

Cytogenetics: 11q13.4

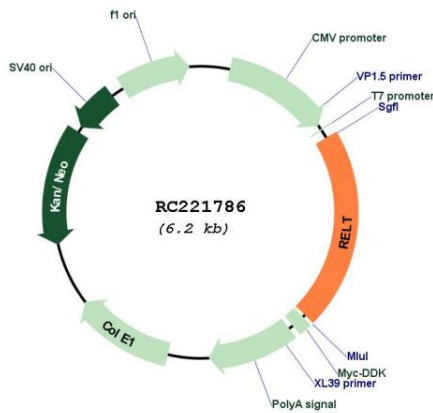
Protein Families: Druggable Genome, Transmembrane

Protein Pathways: Cytokine-cytokine receptor interaction

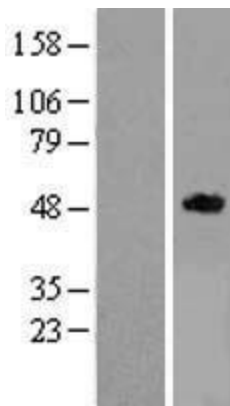
MW: 43.1 kDa

Gene Summary: The protein encoded by this gene is a member of the TNF-receptor superfamily. This receptor is especially abundant in hematologic tissues. It has been shown to activate the NF-kappaB pathway and selectively bind TNF receptor-associated factor 1 (TRAF1). This receptor is capable of stimulating T-cell proliferation in the presence of CD3 signaling, which suggests its regulatory role in immune response. Two alternatively spliced transcript variants of this gene encoding the same protein have been reported. [provided by RefSeq, Jul 2008]

Product images:



Circular map for RC221786



Western blot validation of overexpression lysate (Cat# [LY409904]) using anti-DDK antibody (Cat# [TA50011-100]). Left: Cell lysates from untransfected HEK293T cells; Right: Cell lysates from HEK293T cells transfected with RC221786 using transfection reagent MegaTran 2.0 (Cat# [TT210002]).