

Product datasheet for RC221783

PAG3 (ASAP2) (NM_003887) Human Tagged ORF Clone

Product data:

Product Type:	Expression Plasmids
Product Name:	PAG3 (ASAP2) (NM_003887) Human Tagged ORF Clone
Tag:	Myc-DDK
Symbol:	PAG3
Synonyms:	AMAP2; CENTB3; DDEF2; PAG3; PAP; Pap-alpha; SHAG1
Mammalian Cell Selection:	Neomycin
Vector:	pCMV6-Entry (PS100001)
E. coli Selection:	Kanamycin (25 ug/mL)
ORF Nucleotide Sequence:	>RC221783 representing NM_003887 Red=Cloning site Blue=ORF Green=Tags(s)

TTTTGTAATACGACTCACTATAGGGCGGCCGGAATTCGTCGACTGGATCCGGTACCGAGGAGATCTGCCGCCGCGATCGCC

ATGCCGGACCAGATCTCCGTGTCGGAATTCGTGGCCGAGACCCATGAGGACTACAAGGGCCACGGCCTCCAGCTTACCACCCGCACGGCGCAGTGCCGGAACACTGTGGCGCCATCGAGGAGGCTTTGGACGTGGAACCGGATGGTTCTTTACAAAATGAAGAAATCCGTGAAAGCAATCAACAGCTCTGGGCTGGCTCACGTGGAAATGAAGAGCAGTACACCAGGCTCTGGAGAAGTTTGGCGCAACTGTGTATGCAGAGATGACCCAGATTAGGAAGTGCCTTCTGAAGTTCTCAGTGTTCACAAAGGAGTTGACAGCACTTTTCAAAAACCTGATTCAGAATATGAACAACATAATCTCCTTCCCTTTGGACAGTTTCTGTAAGGGGGACCTGAAAGGAGTGAAGGGGATCTGAAAAAGCCTTTTGATAAAGCTTGGAAAGGACTATGAAACAAAAATAACCAAGATAGAAAAGGAGAAAAGGAACACGCAAGCTCCATGGGATGATTCGGACTGAAATAAGCGGAGCGGAAATGGCCGAAGAGATGGAAAAGGAGAGGCGCTTCTCCAGCTACAGATGTGCGAGTATCTGCTGAAGGTCAACGAAATCAAGATTAAGGGAGTAGATTTACTTCAGAATCTGATCAAACTTTTCATGCCCAATGCAATTTTTTTTTCAGGATGACTCAAAGCCGTGAAAGCCTCAAACCTTCCATTGAAACGCTGTCTACGGATCTTACACAGATCAAACAGCCAGGATGAAGAAAAGGAGTTGATACAGCTTCGAGATATTTTGAATCCGCATTGCAGGTTGAAACAGAAAAGGACTCCCAAATTCGTGAGAGCAGCTTATAGCTTACATCAGCCTCAGGGAACAAGGAACATGGGACCGAGCGGAACCGCAGCCTCTACAAGAAGAGTGACGGGATCCGAAAAGTGTGGCAGAAAAGGAAATGTTTCAGTTAAAAATGTTTTCTGACCATATCCCATGGTACCGTAACCGCCCTCTGCAAAGCTCAACCTGCTAACCTGCCAGGTGAAGACCAACCCTGAGGAGAAGAAGTGCTTTGACCTCATTTCACATGACAGAACTTACCCTTTCAAGCTGAAGATGAACAGGAATGTCAAATATGGATGTCTGTGCTGCAAAAATAGCAAAGAAGAAGCTTTAAACAATGCATTTAAGGGGATGACAATACTGGAGAAAATAACATCGTCCAAGAAGTACAAAGGAGATCATCTCAGAAGTGCAGAGGATGACGGCAATGACGTCTGCTGTGACTGTGGGGCCAGATCTACATGGCTTTCCACCAACCTGGGCATCTGACCTGCATCGAGTGTCCGGAATCCACCGAGAGCTGGGGTTTCATTATCCAGGATGCAGTCCCTGACCTTAGATGTACTGGAAACATCTGAGCTGCTGCTCGCCAAG



[View online »](#)

AATATTGGGAATGCAGGCTTTAATGAGATCATGGAATGTTGCCTACCAGCTGAGGACTCAGTCAAACCCA
 ACCCAGGCAGCGACATGAATGCAAGAAAGGACTACATCACAGCCAAGTACATCGAGAGGAGATACGCAAG
 GAAGAAGCACGCGGATAACGCGGCGAAGCTTACAGTCTTTGCGAGGCCGTCAAACGAGAGATATTTTT
 GGATTGCTCCAAGCTTATGCTGATGGTGTGGATCTTACGGAAAAATCCCACTGGCCAACGGACATGAGC
 CGGATGAAACGGCCCTCCACCTTGCACTGAGTCCGTGGATCGAACCTCTCTTACATTGTAGACTTTTT
 AGTTCAGAACAGTGGGAACCTGGATAAACAGACAGGGAAGGCAGCACAGCCCTGCACTACTGCTGCCTG
 ACCGACAATGCCGAGTGCCTCAAGTTGCTCTGCGGGGAAGGCCCTCCATCGAGATAGCAAACGAGTACG
 GAGAGACTCCGCTGGACATTGCCAAGCGCCTCAAGCACGAGCACTGTGAGGAGCTGCTGACCAAGCCTT
 ATCTGGAAGATTTAATTCTCACGTTACGTTGAATATGAATGGCGACTACTCCACGAAGACCTGGATGAA
 AGTGATGACGACATGGATGAGAAATTGCAGCCAGTCCCAACCGCGGGAAGACCGGCCATCAGCTTCT
 ACCAGCTGGGCTCCAACAGCTTCACTAACGCTGTATCTTTGGCCAGAGATGCTGCAAACCTTGCCAA
 GGAGAAGCAGAGGGCTTTCATGCCAGCATCTGCAGAATGAGACTTACGGAGCCCTCTGAGTGGCAGC
 CCACCTCCCGCCAGCCTGCAGCCCCAGCACCAGCGCCCCCGCTTCTCCACGGAATGTTGGCA
 AAGTTCAGACAGCCTCCTGCTAACACCCTGTGAAGACAACTCTGTAAGTGTGGACGGTGAAGCCG
 GCAGCGATCTTCGTGAGTCCGCGAGTGTCCATCCACCGCTGCCCCCTTTCGCGTGACATCTACCAAT
 CCCTGACCCCCACGCCGCCACCCGTTGCCAAGACGCCAGCGTAATGGAAGCCTTGAGCCAGCCGA
 GCAAGCCTGCCCCGCTGGGATCTCACAGATCAGGCCCCACCTGTGCCCCACAGCCGCCAGCCGCT
 CCCGCAAGAAGCCTGCGCCGGGGGTGACAAGTCCACCCCACTGACCAACAAAGGCCAACCGAGAGGA
 CCTGTGGATCTCTGCAACGGAAGCTCTGGGTCTCTGTCCAATGCTATGGTCTGCAGCCCCCTGCAC
 CCATGCCTAGGAAGTCCGAGGCAACCAAGTTGAAGCCTAAGCGGGTGAAGCGCTCTATAACTGTGTGC
 TGACAACCCCGATGAGCTCACCTTCTCCGAGGGGGATGTATCATCGTGGACGGGGAGGAGACCAGGAG
 TGGTGGATTGCCACATTGATGGAGATCCTGGTCGAAAGGCCATTCCCGGTGTCATTTGTGCACTTTA
 TCGCTGAC

ACGCGTACGCGGCCGCTCGAGCAGAACTCATCTCAGAAGAGGATCTGGCAGCAAATGATATCCTGGATT
 ACAAGGATGACGACGATAAGGTTTAA

Protein Sequence:

>RC221783 representing NM_003887
 Red=Cloning site Green=Tags(s)

MPDQISVSEFVAETHEDYKAPTASSFTTRTAQCRNTVAATIEEALDVRMVLKMKKSVKAINSSGLAHVE
 NEEQYTQALEKFGNCVCRDDPDLGSAFLKFSVFTKELTALFKNLIQNMNNIISFPLDSLKGLKGVKG
 DLKPPFDKAWKDYETKITKIEKEKKEHAKLHGMIRTEISGAEIAEEMEKERRFFQLQMCEYLLKVNIEIKI
 KKGVDLLQNLIKYFHAQCNFFQDGLKAVESLKPSIETLSTDLHTIKQAQDEERRQLIQLRDILKSALQVE
 QKEDSQIRQSTAYSLHQPNKEHGTERRNGSLYKSDGIRKVVQKRCVKNGLTISHGTANRPPAKLN
 LLTCQVKNPEEKCFDLISHDRTYHFQAEDEQECQIWMVLSQNSKEEALNNAFKGDDNTGENNIVQELT
 KEIIEVQRMTGNDVCCDCGAPDPTWLNSTNLGILTCIECSGIHRELVGHYSRMQSLTDLVLTSELLLAK
 NIGNAGFNEIMECLPAEDSVKPNPGRSDMNARKDYITAKYIERRYARKKHADNAAKLHSLCEAVKTRDIF
 GLLQAYADGVDLTEKIPLANGHEPDETLHLAVRSVDRTSLHIVDFLVQNSGNLDKQTKGSTALHYCCL
 TDNAECLKLLLRGASIEIANESGETPLDIAKRLKHEHCEELLTQALSGRFNSHVHVEYEWRLLEDLDE
 SDDDMDEKLQSPNRREDRPI SFYQLGNSQLQSNVSLARDAANLAKEKQRAFMPSSILQNETYGALLSGS
 PPPAQPAAPSTTSAPPLPPRNVGKVTASSANTLWKTNSVSDGGSRRSSDPPAVHPLPLRVSTN
 PLTPTPPPVAKTPSVMELSQPSKPAPPGISQIRPPPLPPQPPSRLPQKKPAPGADKSTPLTNKGQPRG
 PVDLSATEALGPLSNAMVLQPPAMPKRSQATKLPKRVKALYNVADNPDELTFSEGDIIVDGEEDQE
 WWIGHIDGDPGRKGAFPVSFVHFIAID

TRTRPLEQKLISEEDLAANDILDYKDDDDKV

Chromatograms:

https://cdn.origene.com/chromatograms/jb1082_b10.zip

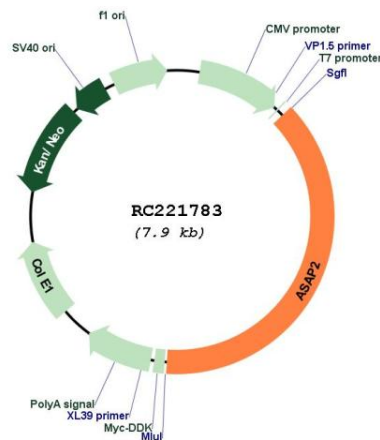
Restriction Sites:

Sgfl-Mlul

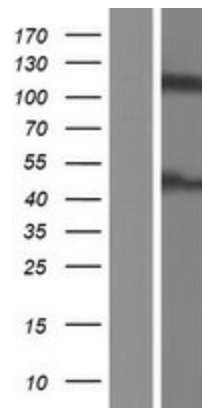
UniProt ID: [O43150](#)
Cytogenetics: 2p24
Domains: ArfGap, SH3, PH, ANK
Protein Pathways: Endocytosis, Fc gamma R-mediated phagocytosis
MW: 111.5 kDa

Gene Summary:

This gene encodes a multidomain protein containing an N-terminal alpha-helical region with a coiled-coil motif, followed by a pleckstrin homology (PH) domain, an Arf-GAP domain, an ankyrin homology region, a proline-rich region, and a C-terminal Src homology 3 (SH3) domain. The protein localizes in the Golgi apparatus and at the plasma membrane, where it colocalizes with protein tyrosine kinase 2-beta (PYK2). The encoded protein forms a stable complex with PYK2 in vivo. This interaction appears to be mediated by binding of its SH3 domain to the C-terminal proline-rich domain of PYK2. The encoded protein is tyrosine phosphorylated by activated PYK2. It has catalytic activity for class I and II ArfGAPs in vitro, and can bind the class III Arf ARF6 without immediate GAP activity. The encoded protein is believed to function as an ARF GAP that controls ARF-mediated vesicle budding when recruited to Golgi membranes. In addition, it functions as a substrate and downstream target for PYK2 and SRC, a pathway that may be involved in the regulation of vesicular transport. Multiple transcript variants encoding different isoforms have been found for this gene. [provided by RefSeq, Sep 2008]

Product images:


Circular map for RC221783



Western blot validation of overexpression lysate (Cat# [LY418371]) using anti-DDK antibody (Cat# [TA50011-100]). Left: Cell lysates from untransfected HEK293T cells; Right: Cell lysates from HEK293T cells transfected with RC221783 using transfection reagent MegaTran 2.0 (Cat# [TT210002]).