

Product datasheet for **RC221780**

RO60 (NM_004600) Human Tagged ORF Clone

Product data:

Product Type:	Expression Plasmids
Product Name:	RO60 (NM_004600) Human Tagged ORF Clone
Tag:	Myc-DDK
Symbol:	RO60
Synonyms:	RORNP; SSA2; TROVE2
Mammalian Cell Selection:	Neomycin
Vector:	pCMV6-Entry (PS100001)
E. coli Selection:	Kanamycin (25 ug/mL)



[View online »](#)

ORF Nucleotide Sequence:

>RC221780 representing NM_004600
 Red=Cloning site Blue=ORF Green=Tags(s)

TTTTGTAATACGACTCACTATAGGGCGGCCGGAATTCGTCGACTGGATCCGGTACCGAGGAGATCTGCC
 GCC**CGCATCGCC**

ATGGAGGAATCTGTAACCAAAATGCAGCCACTGAATGAGAAGCAGATAGCCAATTCTCAGGATGGATATG
 TATGGCAAGTCACTGACATGAATCGACTACACCGTTCTTATGTTTCGGTTCTGAAGGTGGGACTTATTA
 TATCAAAGAACAGAAGTTGGGCCTTAAAAATGCTGAAGCTTTAATTAGATTGATTGAAGATGGCAGAGGA
 TGTGAAGTGATACAAGAAATAAAGTCATTTAGTCAAGAAGGCAGAACCAAAAGCAAGAGCCTATGCTCT
 TTGCACCTGCCATTTGTTCCAGTGCTCCGACATAAGCACAAAACAAGCAGCATTAAAGCTGTTTCTGA
 AGTTTGTGCGATTCTACCCATCTCTTTACTTTTATCCAGTTTAAAGAAAGATCTGAAGGAAAGCATGAAA
 TGTGGCATGTGGGTGCTGCCCTCCGGAAGGCTATAGCGGACTGGTACAATGAGAAAGGTGGCATGGCCC
 TTGCTCTGGCAGTTACAAAATATAAACAGAGAAATGGCTGGTCTCACAAGATCTATTAAGATTGCACA
 TCTTAAACCTTCCAGTGAAGGACTTGAATTGTGACCAAAATATATTACAAAGGGCTGAAAGAAGTTCAT
 GAATTGTATAAGAAAAAGCACTCTCTGTGGAGACTGAAAAATTATTAAGTATCTGGAGGCTGTAGAGA
 AAGTGAAGCGCACAAGAGATGAGCTAGAAGTCATTCATCTAATAGAAGACATAGATTAGTTAGAGAACA
 TCTTTTAACAATCACTTAAAGTCTAAAGAGGTATGGAAGGCTTTGTTACAAGAAATGCCGCTTACTGCA
 TTACTAAGGAATCTAGGAAAGATGACTGCTAATTCAGTACTTGAACCAGGAAATTCAGAAGTATCTTTAG
 TATGTGAAAAACTGTGTAATGAAAACTATTAAGAAAGGCTCGTATACATCCATTTTCATATTTTGATCGC
 ATTAGAAACTTACAAGACAGGTCATGGTCTCAGAGGAAACTGAAGTGGCGCCCTGATGAAGAAATTTG
 AAAGCATTTGGATGCTGCTTTTATAAACATTTAAGACAGTTGAACCAACTGGAAACGTTTCTTACTAG
 CTGTTGATGTCAGTGCTTCTATGAACCAAGAGTTTTGGGTAGTATACTCAACGATACAGTACAGTGTGTC
 AGCAATGTGCATGGTTGTCACACGAACAGAAAAAGATTCTTATGTAGTTGCTTTTTCCGATGAAATGGTA
 CCATGTCCAGTGACTACAGATATGACCTTACAACAGGTTTTAATGGCTATGAGTCAGATCCAGCAGGTG
 GAACTGATTGCTCTTCCAATGATCTGGGCTCAGAAGACAAACACACCTGCTGATGTCTTCATTGTATT
 CACTGATAATGAGACCTTTGCTGGAGGTGCCATCCTGCTATTGCTCTGAGGGAGTATCGAAAGAAATG
 GATATTCCAGCTAAATTGATTGTTTGTGGAATGACATCAAATGGTTTACCATTGCAGACCCAGATGATA
 GAGGCATGTTGGATATGTGCGGCTTTGATACTGGAGCTCTGGATGTAATTCGAAATTCACATTAGATAT
 GATT

ACGCGTACGCGGCCGCTCGAGCAGAAACTCATCTCAGAAGAGGATCTGGCAGCAAATGATATCCTGGATT
 ACAAGGATGACGACGATAAGGTTTAA

Protein Sequence:

>RC221780 representing NM_004600
 Red=Cloning site Green=Tags(s)

MEESVNQMPLNEKQIANSQDGYVWQVTDNRLHRFLCFGSEGGTYIYKEQKLGLENAEALIRLIEDGRG
 CEVIQEIKSFSQEGRTTKQEPMLFALAIQCSQSDISTKQAAFVAVSEVCRIPHLFTFIQFKDLKESMK
 CGMWGRALRKAIAADWYNEKGMALALAVTKYKQRNGWSHKDLLRLSHLKPSSSEGLAIVTKYITKGWKEVH
 ELYKEKALSVETEKLLKYLEAVEKVKRTRDELEVIHLIEEHRLVREHLLTNHLKSKEVWKALLQEMPLTA
 LLRNLGKMTANSVLEPGNSEVSLVCEKLCNEKLLKKARIHPFHILIALETYKTGHGLRGKLRPDEEIL
 KALDAAFYKTFKTVPTGKRFLAVDVSASMNQVLSILNASTVAAAMCMVVTRTEKDSYVAVSDEMVA
 PCPVTTDMLQQLMAMSQIPAGGTDCSLPMIWAQKTNTPADVIVFTDNETFAGGVHPAIALREYRKKM
 DIPAKLIVCGMTSNGFTIADPDDRGMMLMCGFDTGALDVIRNFTLDMI

TRTRPLEQKLISEEDLAANDILDYKDDDDKV

Chromatograms:

https://cdn.origene.com/chromatograms/mk6095_b03.zip

Restriction Sites:

Sgfl-Mlul

Cloning Scheme:


ACCN: NM_004600

ORF Size: 1614 bp

OTI Disclaimer: Due to the inherent nature of this plasmid, standard methods to replicate additional amounts of DNA in E. coli are highly likely to result in mutations and/or rearrangements. Therefore, OriGene does not guarantee the capability to replicate this plasmid DNA. Additional amounts of DNA can be purchased from OriGene with batch-specific, full-sequence verification at a reduced cost. Please contact our customer care team at custsupport@origene.com or by calling 301.340.3188 option 3 for pricing and delivery.

The molecular sequence of this clone aligns with the gene accession number as a point of reference only. However, individual transcript sequences of the same gene can differ through naturally occurring variations (e.g. polymorphisms), each with its own valid existence. This clone is substantially in agreement with the reference, but a complete review of all prevailing variants is recommended prior to use. [More info](#)

OTI Annotation: This clone was engineered to express the complete ORF with an expression tag. Expression varies depending on the nature of the gene.

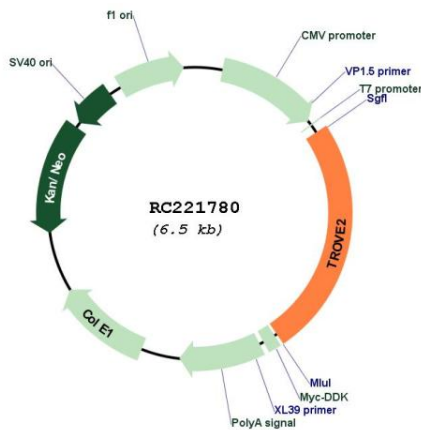
Components: The ORF clone is ion-exchange column purified and shipped in a 2D barcoded Matrix tube containing 10ug of transfection-ready, dried plasmid DNA (reconstitute with 100 ul of water).

- Reconstitution Method:**
1. Centrifuge at 5,000xg for 5min.
 2. Carefully open the tube and add 100ul of sterile water to dissolve the DNA.
 3. Close the tube and incubate for 10 minutes at room temperature.
 4. Briefly vortex the tube and then do a quick spin (less than 5000xg) to concentrate the liquid at the bottom.
 5. Store the suspended plasmid at -20°C. The DNA is stable for at least one year from date of shipping when stored at -20°C.

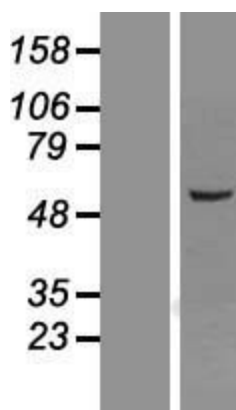
RefSeq: [NM_004600.5](#)

RefSeq Size:	3098 bp
RefSeq ORF:	1617 bp
Locus ID:	6738
UniProt ID:	P10155
Cytogenetics:	1q31.2
Protein Families:	Transcription Factors
Protein Pathways:	Systemic lupus erythematosus
MW:	60.5 kDa
Gene Summary:	RNA-binding protein that binds to misfolded non-coding RNAs, pre-5S rRNA, and several small cytoplasmic RNA molecules known as Y RNAs. May stabilize some of these RNAs and protect them from degradation (PubMed:18056422). Binds to endogenous Alu retroelements which are induced by type I interferon and stimulate porinflammatoiry cytokine secretion. Regulates the expression of Alu retroelements as well as inflammatory genes (PubMed:26382853).[UniProtKB/Swiss-Prot Function]

Product images:



Circular map for RC221780



Western blot validation of overexpression lysate (Cat# [LY417882]) using anti-DDK antibody (Cat# [TA50011-100]). Left: Cell lysates from untransfected HEK293T cells; Right: Cell lysates from HEK293T cells transfected with RC221780 using transfection reagent MegaTran 2.0 (Cat# [TT210002]).