

## Product datasheet for **RC221776**

### TMCO6 (NM\_018502) Human Tagged ORF Clone

#### Product data:

Product Type:	Expression Plasmids
Product Name:	TMCO6 (NM_018502) Human Tagged ORF Clone
Tag:	Myc-DDK
Symbol:	TMCO6
Synonyms:	PRO1580
Mammalian Cell Selection:	Neomycin
Vector:	pCMV6-Entry (PS100001)
E. coli Selection:	Kanamycin (25 ug/mL)



[View online »](#)

**ORF Nucleotide Sequence:**

>RC221776 representing NM\_018502  
 Red=Cloning site Blue=ORF Green=Tags(s)

TTTTGTAATACGACTCACTATAGGGCGGCCGGAATTCGTCGACTGGATCCGGTACCGAGGAGATCTGCC  
 GCC**CGGATCGCC**

ATGTGGAGCCGACGGCAGGGCCGCCTCAGGCCACGGTCTGCGGGTGGAGGAGCTACGGCGCCCGCCGGC  
 GGGAGCGGGAGGCAGCACTGCGGAAGGCGCGGAGGGAGCAGCAGCTGGTCAGCAAGAGGCTGCTGAGAAA  
 CGACGCCCCAGAGGAAGCTGGAGAGGGATGTGTGGCTGCGATCCTCGGGGAAACCAGGTGCAGCAGTTC  
 CTGCGGCAAGCCAGCGGGGACAGAGGAAAAGGAGAGAGAGGGGGCTCTGGTCAGCCTTCGTCGAGGCT  
 TGCAGCACCTGAAACACAGCAAACCTTCATCCGGCTGGAGGGCAGCATGCGGACCCTGGTCGGGCTCCT  
 GACCAGCAACCAGGCCCTGCTGCAGCTTAGGGCGGCTCGGTGCCTGCATGAGCTCTCTACTCCGAGCAG  
 TCCACTGTTGCTGAGGCCTGCCTGCCAGCCACTTCTTACCTCCTCACCTACCTCTCCAGTCACAGCTCAG  
 ACTTCATAGAGCTGTGTCTGTATACACTGGTAACCTGATCGTGGAGAGTGAGGCTGTGAGAAGGCAGCT  
 CCTGCCACAGGGCATTGTTCCAGCCTTGGCTGCCTGCATCCAGTCCCCCATGTGGCTGTGCTGGAAGCT  
 CTGGATATGCCTTGCCAGCTTCTACAGGCTGAGGAAGCTCCAGAGAAGATCATTCCCTCCATCTTGG  
 CCTCCACTCTCCCTCAGCACATGCTACAATGTTGCAACCTGGCCCAAAGCTCAACCCTGGGGTCGCTGT  
 GGAGTTTGCTGGTGCCTTATTACATCATCTGCAGCCAGGTGAGCAATCCTCTGCTCATTGGCCATGGG  
 GCTCTGTCTACTCTGGGGTGTGCTGTTGGACTTGGCTGGGGCTGTCCAGAAAACCAGGATGCAGGAC  
 TGGAGCTGCTGGCATGCCCGTGCCTCGATGTCTAAGCAACCTGCTAACTGAGGCAGCAGTGAGACTGT  
 GGGAGGGCAAATGCAGCTCAGAGATGAGCGTGTGTGGCAGCCTATTTATCCTTCTGCAGTTCTTTTTC  
 CAGAAACAGCCCAGTCTGCTCCCTGAGGGCCTTGGCTCCTCAACAACCTCACTGCAAACAGTCCTAGTT  
 TCTGACTCCTTGTCTCCCTGGATCTGATTGAGCCTCTTTACAGCTGTTGCCAGTCTAACAAGCTGGT  
 GAGCGTAATGGTCTCACAGTTCTGTGCAATGTTGCAGAAAAGGGTCTGCTTACTGCCAGCGGCTGTGG  
 CCAGGGCCCTGCTTCCGCTTGTGTCACACTAGCCTTTTCTGACTGAAGTAGTAGGCCAGAGTT  
 TGGAGCTGCTGCATCTGCTGTTCTGTATCAGCCAGAGGCTGTTGAGTCTTCTGCAGCAGTCAGGGCT  
 GCAAGCCCTGAAAGGCATCAGGAAGAGGCCAGCTCCAGGATCGTGTGTATGCTCTCCAGCAGACAGCT  
 CTTCAAGGG

**ACGCGT**ACGCGGCCGCTCGAGCAGAAACTCATCTCAGAAGAGGATCTGGCAGCAAATGATATCCTGGATT  
 ACAAGGATGACGACGATAAGGTTTAA

**Protein Sequence:**

>RC221776 representing NM\_018502  
 Red=Cloning site Green=Tags(s)

MWSRRQGRLRPTVCGVEELRRRRREREALRKARREQQLVSKRLLRNDAPPEEAGEGCVAAILGETEVQOF  
 LRQAQRGTEEKEREGALVSLRRGLQHPETQQTFRLEGSMTLVGLLTSNQALLQLEAARCLHELHSHSEQ  
 STVAEACLPAATSYLLTYLSSHSSDFIELCLYTLGNLIVESEAVRRQLLPQGIQSPHVAVLEA  
 LGYALSQLLQAEAEPEKIIPSIILASTLPQHMLQMLQPGPKLNPGVAVFEAWCLHYIICSQVSNPLLIHG  
 ALSTLGLLLDLGAVQKTEDAGLELLACPVLRLSNLLTEAAVETVGGQMQLRDERVVAALFILLQFFF  
 QKQPSLLPEGLWLLNNLTANSPSFCTSLLSLDLIEPLLQLLPVSNVSVMLTVLCNVAEKGPAYCQRLW  
 PGPLLPALLHTLAFSDTEVVGQSLELLHLLFLYQPEAVQVFLQQSGLQALERHQEEAQLQDRVYALQQTAL  
 LQG

**TRTRPLEQKLI**SEEDLAANDILDYKDDDDKV

**Chromatograms:**

[https://cdn.origene.com/chromatograms/mk8040\\_c04.zip](https://cdn.origene.com/chromatograms/mk8040_c04.zip)

**Restriction Sites:**

Sgfl-Mlul

**Cloning Scheme:**


**ACCN:** NM\_018502

**ORF Size:** 1479 bp

**OTI Disclaimer:** The molecular sequence of this clone aligns with the gene accession number as a point of reference only. However, individual transcript sequences of the same gene can differ through naturally occurring variations (e.g. polymorphisms), each with its own valid existence. This clone is substantially in agreement with the reference, but a complete review of all prevailing variants is recommended prior to use. [More info](#)

**OTI Annotation:** This clone was engineered to express the complete ORF with an expression tag. Expression varies depending on the nature of the gene.

**Components:** The ORF clone is ion-exchange column purified and shipped in a 2D barcoded Matrix tube containing 10ug of transfection-ready, dried plasmid DNA (reconstitute with 100 ul of water).

- Reconstitution Method:**
1. Centrifuge at 5,000xg for 5min.
  2. Carefully open the tube and add 100ul of sterile water to dissolve the DNA.
  3. Close the tube and incubate for 10 minutes at room temperature.
  4. Briefly vortex the tube and then do a quick spin (less than 5000xg) to concentrate the liquid at the bottom.
  5. Store the suspended plasmid at -20°C. The DNA is stable for at least one year from date of shipping when stored at -20°C.

**RefSeq:** [NM\\_018502.5](#)

**RefSeq Size:** 1896 bp

**RefSeq ORF:** 1482 bp

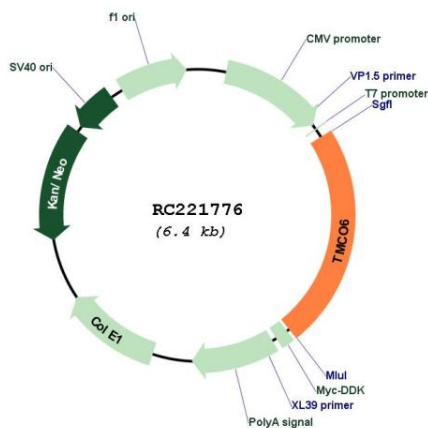
**Locus ID:** 55374

**UniProt ID:** [Q96DC7](#)

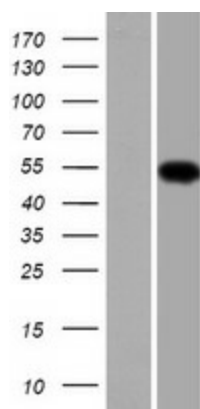
**Cytogenetics:** 5q31.3

MW: 54.3 kDa

Product images:



Circular map for RC221776



Western blot validation of overexpression lysate (Cat# [LY413011]) using anti-DDK antibody (Cat# [TA50011-100]). Left: Cell lysates from untransfected HEK293T cells; Right: Cell lysates from HEK293T cells transfected with RC221776 using transfection reagent MegaTran 2.0 (Cat# [TT210002]).