

## Product datasheet for **RC221774**

### ART5 (NM\_001079536) Human Tagged ORF Clone

#### Product data:

Product Type:	Expression Plasmids
Product Name:	ART5 (NM_001079536) Human Tagged ORF Clone
Tag:	Myc-DDK
Symbol:	ART5
Synonyms:	ARTC5
Mammalian Cell Selection:	Neomycin
Vector:	pCMV6-Entry (PS100001)
E. coli Selection:	Kanamycin (25 ug/mL)
ORF Nucleotide Sequence:	>RC221774 ORF sequence Red=Cloning site Blue=ORF Green=Tags(s)

TTTGTAAATACGACTCACTATAGGGCGGCCGGAATTCGTCGACTGGATCCGGTACCGAGGAGATCTGCC  
GCC**CGATCGCC**

ATGGCGCTGGCGGCTTTGATGATCGCCCTCGGCAGCCTCGGCCTCCACACCTGGCAGGCCAGGCTGTTC  
CCACCATCCTGCCCTGGGCCTGGCTCCAGACACCTTTGACGATACCTATGTGGTTGTGTAGAGGAGAT  
GGAGGAGAAGGCAGCCCCCTGCTAAAGGAGGAAATGGCCACCATGCCCTGCTGCGGGAATCCTGGGAG  
GCAGCCCAGGAGACCTGGGAGGACAAGCGTCGAGGGCTTACCTTGCCCCCTGGCTTCAAAGCCCAGAATG  
GAATAGCCATTATGGTCTACACCAACTCATCGAACACCTTGTAAGTGGGAGTTGAATCAGGCCGTGCGGAC  
GGGCGGAGGCTCCCGGGAGCTCTACATGAGGCACTTTCCCTTCAAGGCCCTGCATTTCTACCTGATCCGG  
GCCCTGCAGCTGCTGCGAGGCAGTGGGGCTGCAGCAGGGGACCTGGGGAGGTGGTGTTCGAGGTGTGG  
GCAGCCTTCGCTTTGAACCAAGAGGCTGGGGGACTCTGTCCGCTTGGGCCAGTTTGCTCCAGCTCCCT  
GGATAAGGCAGTGGCCACAGATTTGGTAATGCCACCCTTCTCTCTAACAACCTTGCTTTGGGGCCCT  
ATACAGGCCTTCTGTCTTTCCCAAGGAGCGCGAGGTGCTGATCCCCCATGAAGTCTTTTGGTTA  
CCAGATTCTCTCAGGATGGAGCCAGAGCTTGGTACTCTCTGGAGCTATAATCAGACCTGTAGCCATTT  
TAACTGCGCCTATCTGGGTGGGAGAAGAGGCGGGCTGTGTCTGCGCCAGGAGCCCTGGGAACGGGT  
GACCTTCATATGACGAAGAGGCACCTCCAGCAGCCT

**ACGCGT**ACGCGGCGCTCGAGCAGAACTCATCTCAGAAGAGGATCTGGCAGCAAATGATATCCTGGATT  
ACAAGGATGACGACGATAAGGTTTAA



[View online »](#)

**Protein Sequence:** >RC221774 protein sequence  
 Red=Cloning site Green=Tags(s)

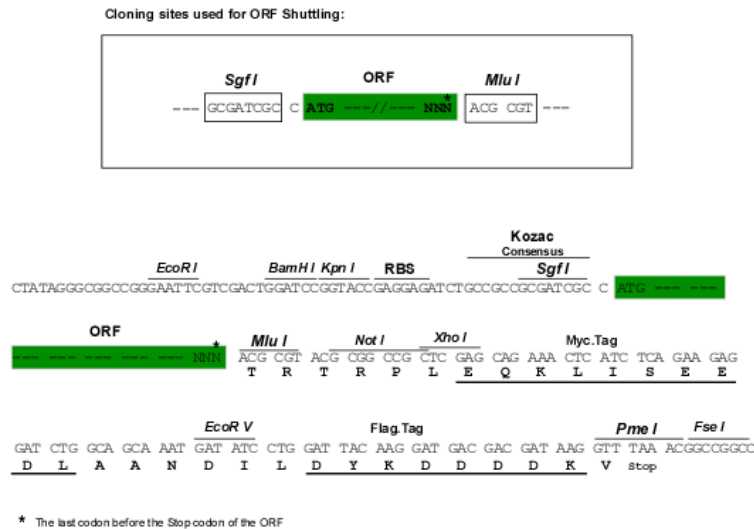
MALAALMIALGSLGLHTWQAQAVPTILPLGLAPDTFDDTYVGCVEEMEEKAAPLLKEEMAHHALLRESWE  
 AAQETWEDKRRGLTLPFGKAQNGIAIMVYTNSNTLYWELNQAVRTGGGSREL YMRHFPPKALHFYLIR  
 ALQLLRSGGCSRGPGEVFRGVGSLRFEPKRLGDSVRLGQFASSSLDKAVAHFRGNATLFSLTTCFGAP  
 IQAFSVFPKEREVLIPHEVFLVTRFSQDGAQSLVTLWSYNQTCSHFNCAYLGGKKRRGCVSAPGALGTG  
 DLHMTKRHLQQP

TRTRPLEQKLISEEDLAANDILDYKDDDDKV

**Chromatograms:** [https://cdn.origene.com/chromatograms/mk6421\\_a06.zip](https://cdn.origene.com/chromatograms/mk6421_a06.zip)

**Restriction Sites:** SgfI-MluI

**Cloning Scheme:**



**ACCN:** NM\_001079536

**ORF Size:** 876 bp

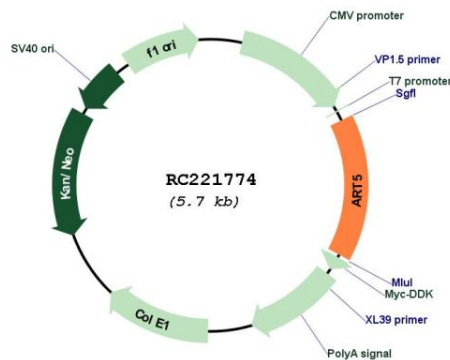
**OTI Disclaimer:** The molecular sequence of this clone aligns with the gene accession number as a point of reference only. However, individual transcript sequences of the same gene can differ through naturally occurring variations (e.g. polymorphisms), each with its own valid existence. This clone is substantially in agreement with the reference, but a complete review of all prevailing variants is recommended prior to use. [More info](#)

**OTI Annotation:** This clone was engineered to express the complete ORF with an expression tag. Expression varies depending on the nature of the gene.

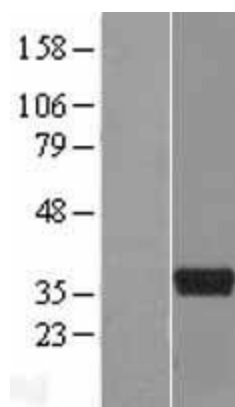
**Components:** The ORF clone is ion-exchange column purified and shipped in a 2D barcoded Matrix tube containing 10ug of transfection-ready, dried plasmid DNA (reconstitute with 100 ul of water).

<b>Reconstitution Method:</b>	<ol style="list-style-type: none"> <li>1. Centrifuge at 5,000xg for 5min.</li> <li>2. Carefully open the tube and add 100ul of sterile water to dissolve the DNA.</li> <li>3. Close the tube and incubate for 10 minutes at room temperature.</li> <li>4. Briefly vortex the tube and then do a quick spin (less than 5000xg) to concentrate the liquid at the bottom.</li> <li>5. Store the suspended plasmid at -20°C. The DNA is stable for at least one year from date of shipping when stored at -20°C.</li> </ol>
<b>RefSeq:</b>	<u>NM_001079536.1, NP_001073004.1</u>
<b>RefSeq Size:</b>	1249 bp
<b>RefSeq ORF:</b>	876 bp
<b>Locus ID:</b>	116969
<b>UniProt ID:</b>	<u>Q96L15</u>
<b>Cytogenetics:</b>	11p15.4
<b>Protein Families:</b>	Secreted Protein
<b>MW:</b>	32.2 kDa
<b>Gene Summary:</b>	<p>The protein encoded by this gene belongs to the ARG-specific ADP-ribosyltransferase family. Proteins in this family regulate the function of target proteins by attaching ADP-ribose to specific amino acid residues in their target proteins. The mouse homolog lacks a glycosylphosphatidylinositol-anchor signal sequence and is predicted to be a secretory enzyme. Several transcripts encoding different isoforms have been found for this gene. [provided by RefSeq, Jul 2014]</p>

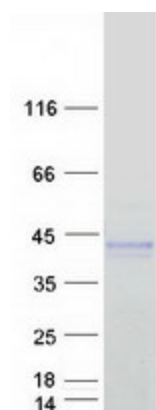
## Product images:



Circular map for RC221774



Western blot validation of overexpression lysate (Cat# [LY421524]) using anti-DDK antibody (Cat# [TA50011-100]). Left: Cell lysates from untransfected HEK293T cells; Right: Cell lysates from HEK293T cells transfected with RC221774 using transfection reagent MegaTran 2.0 (Cat# [TT210002]).



Coomassie blue staining of purified ART5 protein (Cat# [TP321774]). The protein was produced from HEK293T cells transfected with ART5 cDNA clone (Cat# RC221774) using MegaTran 2.0 (Cat# [TT210002]).