

Product datasheet for RC221770

EVI1 (MECOM) (NM_005241) Human Tagged ORF Clone

Product data:

Product Type:	Expression Plasmids
Product Name:	EVI1 (MECOM) (NM_005241) Human Tagged ORF Clone
Tag:	Myc-DDK
Symbol:	EVI1
Synonyms:	AML1-EVI-1; EVI1; KMT8E; MDS1; MDS1-EVI1; PRDM3; RUSAT2
Mammalian Cell Selection:	Neomycin
Vector:	pCMV6-Entry (PS100001)
E. coli Selection:	Kanamycin (25 ug/mL)
ORF Nucleotide Sequence:	>RC221770 representing NM_005241 Red=Cloning site Blue=ORF Green=Tags(s)

TTTTGTAATACGACTCACTATAGGGCGGCCGGAATTCGTCGACTGGATCCGGTACCGAGGAGATCTGCC
GCC**CGATCGCC**

ATGAAGAGCGAAGACTATCCCCATGAACTATGGCGCCGGATATCCACGAAGAACGGCAATATCGCTGCG
AAGACTGTGACCAGCTCTTTGAATCTAAGGCTGAACTAGCAGATCACAAAAGTTTCCATGCAGTACTCC
TCACTCAGCATTTTCAATGGTTGAAGGACTTTCAGCAAAAACCGAAAGCGAGAATGATCTCCAAGAG
ATACACACGATCCAGGAGTGAAGGAATGTGACCAAGTTTTTCTGATTTGCAAAGCCTGGAGAAACACA
TGCTGTACATACTGAAGAGAGGAATACAAGTGTGATCAGTGTCCCAAGGCATTTAACTGGAAGTCCAA
TTTAATTCGCCACCAGATGTACATGACAGTGGAAAGCACTATGAATGTGAAAACGTGCCAAGGTTTTTC
ACGGACCCTAGCAACCTTCAGCGGCACATTCGCTCTCAGCATGTCCGGTGCCCGGGCCCATGCATGCCCGG
AGTGTGGCAAAACGTTTGCCACTTCGTCCGGCCTCAAACAACACAAGCACATCCACAGCAGTGTGAAGCC
CTTTATCTGTGAGGTCTGCCATAAATCCTATACTCAGTTTTCAAACCTTTGCCGTATAAGCGCATGCAT
GCTGATTGCAGAACCCAAATCAAGTGCAAAGACTGTGGACAAATGTTGAGCACTACGTCCTTCTTAAATA
AACACAGGAGGTTTTGTGAGGGCAAGAACCATTTGCGGCAGGTGGATTTTTGGCCAAGGCATTTCACT
TCCTGGAACCCAGCTATGGATAAAACGTCCATGGTAAATAGTGCATGCCAACCCGGGCTTGTCTGAC
TATTTTGGCGCCAATAGGCATCTGCTGGTCTTACCTTTCCAACAGCTCCTGGATTTTCTTTAGCTTCC
CTGGTCTGTTTCTTCCGCTTGTACCACAGGCCTCCTTTGATACCTGCTAGTTCTCCTGTAAAGGACT
ATCAAGTACTGAACAGACAAAACAAAGTCAAAGTCCCCTCATGACACATCCTCAGATACTGCCAGTACA
CAGGATATTTGAAGGCACTATCTAAACACCCATCTGTAGGGGACAATAAGCCAGTGGAGCTCCAGCCCG
AGAGGTCTCTGAAGAGAGGCCCTTTGAGAAAATCAGTGACCAGTCCAGAGAGTAGTGACCTTGATGATGT
CAGTACACCAAGTGGCAGTGACCTGAAACAACCTCGGGCTCTGATCTGGAAAGTACATTGAAAGTGT
AAAGAGAAATTTAAAGAAAATGGTAAAATGTTCAAAGACAAGTAAGCCCTTTTCAAGTCTGGCTTCAA
TAAATAAAGAAAGAATACAGCAATCATTCCATTTTCTACCATCTTTAGAGGAGCAGACTGCGGTGTC
AGGAGCTGTGAATGATTCTATAAAGGCTATTGCTTCTATTGCTGAAAAACTTTGGTTCAACAGGACTG



[View online »](#)

GTGGGGCTGCAAGACAAAAAGTTGGAGCTTTACCTTACCCTTCCATGTTTCCCCTCCCATTTTTCCAG
 CATTCTCTCAATCAATGTACCCATTTCTGATAGAGACTTGAGATCGTTACCTTTGAAAAAGAACCCCA
 ATCACCAGGTGAAGTAAAGAACTGCAGAAGGGCAGCTCTGAGTCCCCTTTGATCTCACCCTAAGCGA
 AAGGATGAGAAGCCCTTGACTCCAGTCCCCTCCAAGCCTCCAGTGACACCTGCCACAAGCCAAGACCAGC
 CCCTGGATCTAAGTATGGGCAGTAGGAGTAGAGCCAGTGGGACAAAGCTGACTGAGCCTCGAAAAACCA
 CGTGTTTGGGGGAAAAAAGGAAGCAACGTCAATCAAGACCTGCTTCAGATGGTTCTTGCAGCATGCA
 AGACCCTCCTTTCTTTATGGACCTATTTACAGAGTAGAGAAAAGAACTAACTGACCCTTGAAG
 CTTTAAAAGAGAAAATCTTGAGGCCTTCCAGGATTCTGTTTACCCACAATTCACCTGCCTGATCA
 GAGAACTTGATGTCAGCTATTGAAAACATGGCAGAAAAGCTAGAGAGCTTCAGTGCCCTGAAACCTGAG
 GCCAGTGAGCTTTACAGTCAGTGCCCTCTATGTTCAACTTCAGGGCGCCTCCCAATGCCCTGCCAGAGA
 ACCTTCTGCGGAAGGAAAGGAGCGCTATACCTGCAGATACTGTGGCAAGATTTTTCCAAGTCTGCAAA
 CCTAACACGGCACTTGAGAACCCACACAGGAGAGCAGCCTTACAGATGCAAACTGTGACAGATCATT
 AGCATATCTTAACTTGCAAAGGCATGTTGCAACATCCACAATAAAGAGAAGCCATTTAAGTGTCACT
 TATGTGATAGGTGTTTTGGTCAACAAACCAATTTAGACAGACACCTAAAGAAACATGAGAATGGGAACAT
 GTCGGTACAGCAACATCGTCGCCTCATTCTGAACTGGAAGTACAGGTGCGATTCTGGATGACAAAGAA
 GATGCTTACTTCACAGAAATTCGAAATTCATTGGGAACAGCAACCATGGCAGCCATCTCCAGGAATG
 TGGAGGAGAGAATGAATGGCAGTCATTTAAAGATGAAAAGGCTTTGGTGACCAGTCAAAATTCAGACT
 GCTGGATGATGAAGAAGTTGAAGATGAGGTGTTGTAGATGAGGAGGATGAAGACAATGATATTACTGGA
 AAAACAGGAAAGGAACAGTGAAGTAAATTTACATGAAGGAAACCTGAGGATGACTATGAAGAAACCA
 GTGCCCTGGAGATGAGTTGCAAGACATCCCAGTGAGGTATAAAGAGGAAGAATAAAAAGTGGACTTTC
 TGCTCTAGATCATATAAGGCACTTACAGATAGCCTCAAATGAGGAAAATGGAAGATAATCAATATTCT
 GAAGCTGAGCTGTCTTTTAGTACTTCCCATGTGCCAGAGGAACCTAAGCAGCCGTTACACAGAAAGT
 CCAAATCGCAGGCATATGCTATGATGCTGCTCACTGTCTGACAAGGAGTCCCTCCATTCTACATCCACAG
 TTCTTCCAACGTGTGGCAGATATGGCCAGGGCTGCGGGGAATCCAGTGCTATCCAGTCCATAAGCCAC
 GTA

ACGCGTACGCGGCCGCTCGAGCAGAACTCATCTCAGAAGAGGATCTGGCAGCAATGATATCCTGGATT
 ACAAGGATGACGACGATAAGGTTTAA

Protein Sequence:

>RC221770 representing NM_005241

Red=Cloning site Green=Tags(s)

MKSEDYPHETMAPDIHEERQYRCEDCDQLFESKAELADHQKFPSTPHSAFMSVEEDFQQKLESENDLQE
 IHTIQECKEDQVFPDLQSLKHMLSHTEEREYKCDQCPKAFNWKSNLIRHQMSHDSGKHCECENCAKVF
 TDPSNLQRHRSQHVGARAHACPECGKTFATSSGLKQHKHIHSSVKPFICEVCHKSYTQFSNLCRHKRMH
 ADCRTQIKCKDCGQMFSTSSLNKHRFCEGKNHFAAGGFFGQGISLPGTPAMDKTSMVNMSHANPGLAD
 YFGANRHPAGLTFPTAPGFSFSPGLFSPGLYHRPPLIPASSPVKGLSSTEQTNKSQSPLMTHPQILPAT
 QDILKALSKHPSVGDNKPVELQPERSSEERPFEKISDQSESSDLDDVSTPSGSDLETTSGSDLESIDIESD
 KEKFKENGKMFKDKVSPLQNLASINNKKEYSNHSIFSPSLEEQTAVSGAVNDSIKAIASIAEKYFGSTGL
 VGLQDKKVGALPYPSMFPLPFFPAFSQSMYPFPDRDLRSLPLKMEPQSPGEVKKLQKGSSESPFDLTTKR
 KDEKPLTPVPSKPPVTPATSQDQPLDLSMGRSRASGTKLTEPRKNHVFGGKGSNVESRPASDGSQHA
 RPTPFFMDPIYRVEKRKLTDPLEALKEKYLSPGFLFHPQQLPDQRTWMSAIENMAEKLESFSALKPE
 ASELLQSVPSMFNFRAPPNALPENLLRKGKERYTCRYCGKIFPRSANLTRHLRHTHTGEQPYRCKYCDRSF
 SISSNLQRHVRNIHNKEKPKCHLCDRCFGQQTNLDRHLKKHENGNMSTATSSPHSELESTGAILDDKE
 DAYFTEIRNFIGNSNHGSQSPRNVEERMNGSHFKDEKALVTSQNSDLLDDEEVEDEVLLDEEDEDNDITG
 KTGKEPVTSNLHEGNPEDDYEETSALEMSCKTSPVRYKEEYKSGLSALDHIRHFTDSLKMRKMEDNQYS
 EAELESSFSTSHVPEELKQPLHRKSKSQAYAMMLSLSDKESLHSTSHSSSNVWHSMAAAAESSAIQSI
 SH
 V

TRTRPLEQKLISEEDLAANDILDYKDDDDKV

Chromatograms:

https://cdn.origene.com/chromatograms/mk6168_f03.zip

Restriction Sites: SgfI-MluI

Cloning Scheme:



ACCN: NM_005241

ORF Size: 3153 bp

OTI Disclaimer: The molecular sequence of this clone aligns with the gene accession number as a point of reference only. However, individual transcript sequences of the same gene can differ through naturally occurring variations (e.g. polymorphisms), each with its own valid existence. This clone is substantially in agreement with the reference, but a complete review of all prevailing variants is recommended prior to use. [More info](#)

OTI Annotation: This clone was engineered to express the complete ORF with an expression tag. Expression varies depending on the nature of the gene.

Components: The ORF clone is ion-exchange column purified and shipped in a 2D barcoded Matrix tube containing 10ug of transfection-ready, dried plasmid DNA (reconstitute with 100 ul of water).

Reconstitution Method:

1. Centrifuge at 5,000xg for 5min.
2. Carefully open the tube and add 100ul of sterile water to dissolve the DNA.
3. Close the tube and incubate for 10 minutes at room temperature.
4. Briefly vortex the tube and then do a quick spin (less than 5000xg) to concentrate the liquid at the bottom.
5. Store the suspended plasmid at -20°C. The DNA is stable for at least one year from date of shipping when stored at -20°C.

Note: Plasmids are not sterile. For experiments where strict sterility is required, filtration with 0.22um filter is required.

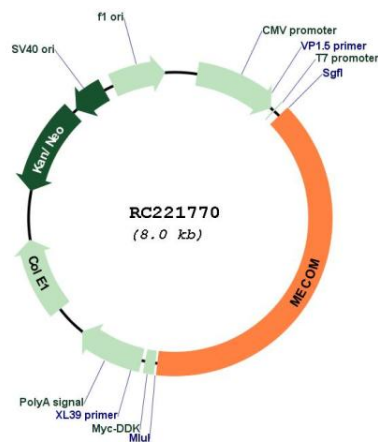
RefSeq: [NM_005241.3](#)

RefSeq Size: 3570 bp

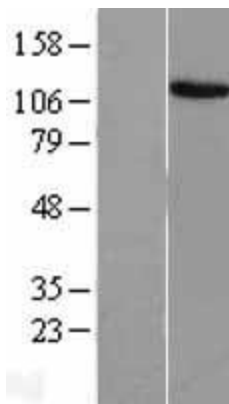
RefSeq ORF: 3156 bp

Locus ID: 2122
UniProt ID: [Q13465](#)
Cytogenetics: 3q26.2
Protein Families: Druggable Genome, Transcription Factors
Protein Pathways: Chronic myeloid leukemia, MAPK signaling pathway, Pathways in cancer
MW: 118.1 kDa
Gene Summary: The protein encoded by this gene is a transcriptional regulator and oncoprotein that may be involved in hematopoiesis, apoptosis, development, and cell differentiation and proliferation. The encoded protein can interact with CTBP1, SMAD3, CREBBP, KAT2B, MAPK8, and MAPK9. This gene can undergo translocation with the AML1 gene, resulting in overexpression of this gene and the onset of leukemia. Several transcript variants encoding a few different isoforms have been found for this gene. [provided by RefSeq, Mar 2011]

Product images:



Circular map for RC221770



Western blot validation of overexpression lysate (Cat# [LY426216]) using anti-DDK antibody (Cat# [TA50011-100]). Left: Cell lysates from untransfected HEK293T cells; Right: Cell lysates from HEK293T cells transfected with [RC226310] using transfection reagent MegaTran 2.0 (Cat# [TT210002]).