

Product datasheet for **RC221769**

IGSF3 (NM_001007237) Human Tagged ORF Clone

Product data:

Product Type:	Expression Plasmids
Product Name:	IGSF3 (NM_001007237) Human Tagged ORF Clone
Tag:	Myc-DDK
Symbol:	IGSF3
Synonyms:	EWI-3; LCDD; V8
Mammalian Cell Selection:	Neomycin
Vector:	pCMV6-Entry (PS100001)
E. coli Selection:	Kanamycin (25 ug/mL)
ORF Nucleotide Sequence:	>RC221769 ORF sequence Red=Cloning site Blue=ORF Green=Tags(s)

TTTTGTAATACGACTCACTATAGGGCGGCCGGAATTCGTCGACTGGATCCGGTACCGAGGAGATCTGCC
GCC**CGATCGCC**

ATGAAGTGCTTTTTCCCGGTGCTGAGCTGTCTGGCTGTGCTGGGTGTGGTGTGTCAGCACAGCGGCAGGTCA
CCGTTCCAGGAAGGACCCTTGTACCGCACGGAGGGCTCCACATCACTATCTGGTGAATGTGAGTGGCTA
CCAGGGACCTTCTGAGCAGAATTTCCAGTGGTCCATTTACCTGCCTTCGTCGCCAGAGCGAGAGGTGCAG
ATCGTCAGCACCATGGACTCTTCCTTCCCCTATGCCATCTACACCAGCGCGTCCGCGGAGGGAAGATCT
TCATAGAAAGAGTCCAGGGGAATCAACCCTATTGCACATCACAGATCTTCAGGCCCGGGATGCCGGGA
GTATGAATGCCACACACCAGCACTGATAAGCAATACTTTGGGAGTTACAGTGCAAAGATGAACCTAGTG
GTGATCCCAGACTCCCTGCAGACCACTGCCATGCCCCAGACTCTGCACAGAGTGGAGCAGGACCCGCTGG
AGCTCACTTGTGAGGTGGCCTCAGAGACCACTCAGCACAGCCACCTGTCTGTGGCCTGGCTCCGGCAGAA
AGTTGGCGAGAAGCCCGTGGAGGTCACTCCCTGAGCCGAGATTTCACTGCTTCACTCCAGCAGCGAATAT
GCCCAGAGGCAGAGCCTGGGGGAGGTGCGGCTGGACAAGCTGGGGAGGACCACCTTCCGCCTCACCATCT
TCCACCTGCAGCCTTCTGACCAGGGCGAATTCTACTGCGAGGCCCGCAGTGGATCCAGGATCCGGATGG
GTCGTGGTATGCTATGACCCGAAAGCGTTCCGAGGGAGCCGTGGTCAACGTCCAGCCAACGACAAAAGAA
TTCAGTGTTCGGCTGGAGACAGAGAAGCGGCTGCACAGGTGGGGAGCCGGTGGAGTTCCAGATGCATCC
TGGAGGCTCAGAATGTTCCCGACCCTTACTTTGCTGTCTCCTGGGCCTTCAACAGCTCGCTCATCGCCAC
CATGGGTCTTAACGCTGTGCCTGTCTCAACAGCGAATTTGCTCACCGGGAAGCCAGGGGACAGTTAAG
GTGGCCAAAGAGAGCGACAGTGTCTTTGTGCTGAAGATCTACCACCTCCGCCAGGAAGATAGCGGAAAT
ACAACCTGCCGGGTGACTGAGCGAGAGAAAACCGTGACCGGGAATTCATTGATAAGGAGAGCAAGCGTCC
CAAGAACATCCCCATCATAGTCTCCCCCTCAAGAGCAGCATCTCCGTGGAGGTGGCCAGCAATGCCAGC
GTCATCCTTGAGGGCAGGACCTGCGCTTCTCCTGCAGTGTCCGCACGGCAGGCAGGCCGCGAGGGTTCGT
TCTCTGCATCTGGCAGCTTGTGGACAGGACAGAACCGCCGAGCAATATCATGTGGCTAGACCGGGATGG
CACCGTGCAGCCAGGCTCGTCTACTGGGAGCGCAGCAGCTTTGGGGCGTCCAGATGGAGCAGGTGCAG



[View online »](#)

CCCAACTCGTTCAGCCTGGGCATCTTCAACAGCAGGAAGGAGGACGAGGGCCAGTATGAATGCCATGTGA
CTGAATGGGTGCGGGCAGTGGATGGCGAGTGGCAGATTGTTGGGGAGCGCCGGGCCAGCACTCCCATCTC
CATCACAGCTCTTGAAATGGGCTTCGCAGTCACAGCCATCTCCCGGACACCGGGGTGACCTACAGCGAC
TCCTTTGACTTGCAGTGTATCATCAAACCCACTACCCTGCCTGGGTCCCCTGTGCGGTGACATGGCGGT
TCCAGCCGGTGGGCACGGTGGAGTTCCATGACTTGGTGACCTTCAACCGGACGGAGGGTCCAGTGGGG
GGACAGGTCTCCAGCTCCGAACCCGAACTGCCATCGAGAAGGCTGAGTCCAGCAACAACGTCCGCCTA
AGCATCAGCCGAGCCAGTGACACGGAAGCAGGCAAGTACCAGTGTGTGGCAGAGCTGTGGCGGAAGAACT
ACAAACAACCTGGACCGGACTGGCGGAGAGGACCTCAAACCTGCTGGAGATCAGGGTGCTGCAGCCAGT
GACAAAGCTGCAGGTGAGCAAATCGAAGAGGACCTCACCTGGTGAAAAACAAGCCATTCAAGTTGAAC
TGCTCAGTCAAGTCTCAGACTAGCCAGAACTCCCCTTTGCGGTGCTCTGGTATGTCACAAGCCCTCGG
ATGCCGATGGCAAGCTTATCCTGAAGACCACCCACAACCCGCCTTTGAATACGGTACTTACGCCGAGGA
GGAGGGCCTGAGAGCCAGGCTCCAGTTTGAGAGGCATGTGTGCGGGGGCCTGTTACGCCTCACCGTCCAG
AGAGCCGAGGTGACGCAGCGGACGCTACTACTGCCACGTGGAGGAGTGGCTGCTGAGCCCCAACACTACG
CCTGGTACAAGCTGGCAGAGGAGTTTCTGGGCGCACAGAAGTCACTGTGAAACAGCCAGACAGCCGCCT
GAGGCTCAGCCAAGCCAGGGGAACCTGTGCGTTCTGGAGACCCGGCAGGTACAGCTGGAGTGTGTGGTT
CTCAACCCGACACAGCATAACCTCCCAGCTCATGGTGGAATGGTTTGTATGGAAGCCCAACCCCTGAGC
GGGAGACTGTGGCCCGCTTGAGCCGTGACGCCACCTTCCACTATGGAGAGCAGGCAGCCAAGAACAATCT
GAAGGGGCGGCTGCATTTGGAGAGTCTTCCCCGGCGTGTACCGTCTTTCATCCAGAAGTGGCTGTG
CAGGACAGCGGGACCTACAGTGCCATGTGGAGGAGTGGCTGCCAGCCCCAGTGGCATGTGGTATAAGC
GGGCAGAGGACACCGCTGGGCAGACAGCTCTGACAGTCATGCGACCAGATGCTTCCCTGCAGGTGGACAC
AGTGGTCCCCAATGCCACGGTCTCTGAGAAGGCAGCTTCCAGCTGGACTGTAGCATCGTGTCCCGCTCC
AGCCAGGACTCCCGCTTCGCTGTGGCCTGGTATTCCCTGAGGACTAAAGCTGGGGGAAAAGGAGCAGCC
CTGGCCTGGAAGAACAGGAAGAGGAAAGGAGGAGGAGGAGGAGGAGGAGGAGGAGGAGGAGGAGGAGGAGG
CCCAACAGAGCGGACGGCCCTGCTGAGCGTGGGCCCAGATGCTGTCTTTGGCCCAGAGGGCAGTCTTGG
GAGGGCAGGCTTCGCTTCCAGAGGCTCTCCCGGTGCTCTACCGGCTCACAGTGTGCAGGCAAGCCCCC
AAGATACAGGCAATTACTCCTGCCATGTGGAGGAGTGGCTGCCAGCCCTCAGAAGGAATGGTACCGGCT
GACGGAGGAGGAGTCAAGCCCCATCGGCATCCGTGTTCTAGATAACAAGTCCCACCCTCCAGTCCATCATC
TGCTCAAACGACGCACTTTCTACTTCTTCTTCTACCCTTTCCCCTCTTTGGCATTCTTATCATCA
CCATCCTTCTGGTGCCTTCAAGAGCCGGAACCTCCAGCAAGAAGTCTGATGGGAAGAATGGGGTGCCTCT
GCTGTGGATCAAAGAGCCACACCTCAACTACTCCCTACTTGCCTGGAGCCCCCTGTTCTCAGTATCCAT
CCAGGGGCCATAGAC

ACGCGTACGCGGCGGCTCGAGCAGAACTCATCTCAGAAGAGGATCTGGCAGCAAATGATATCCTGGATT
ACAAGGATGACGACGATAAGGTTTAA

Protein Sequence: >RC221769 protein sequence
 Red=Cloning site Green=Tags(s)

```

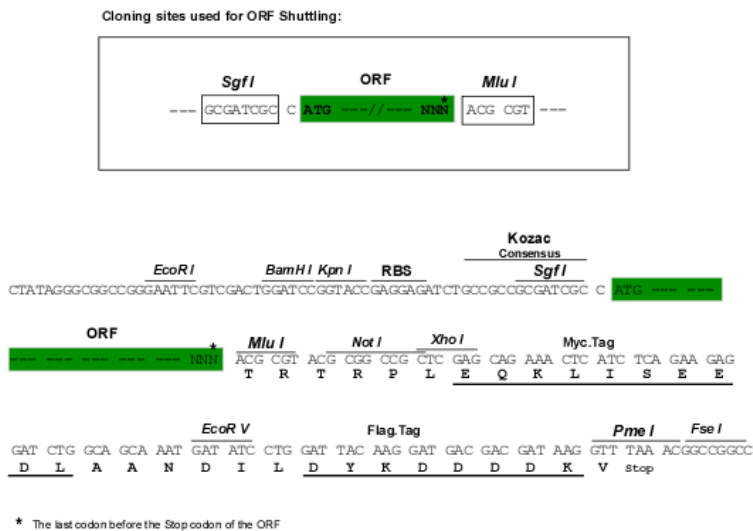
MKCFPPVLSCLAVLGVVSAQRQVTVQEGPLYRTEGSHITWCNVSGYQGPSEQNFQWSIYLPSSPEREVQ
IVSTMDSSFYAIYTRVRGGKIFIERVQGNSTLLHITDLQARDAGEYECHTPSTDKQYFGSYSAKMNLV
VIPDSLQTTAMPQTLHRVEQDPLELTCVASSETIQHSHLSVAWLKQKVGKEKPEVEISLSRDFMLHSSEY
AQRQSLGEVRLDKLGRTTFRLTIFHLQPSDQGEFYCEAAEWIQDPDGSWYAMTRKRSEGAVVNVQPTDKE
FTVRLETEKRLHTVGEPEVFRCLIEAQNVPDRYFAVSWAFNSSLIATMGPNVAVPVLNSEFAHREARGQLK
VAKESDSVFVCLKIYHLRQEDSGKYNCRVTEREKTVTGEFIDKESKRPKNIP IIVLPLKSSISVEVASNAS
VILEGEDLRFSCSVRTAGRPQGRFSVIWQLVDRQNRRSNIMWLD RDGTVPQGSYWERSSFFGGVQMEQVQ
PNSFSLGIFNSRKEDEGQYECVTEWVRAVDGEWQIVGERRASTPISITALEMGFAVTAISRTPGVTYSD
SFDLQCIKPHYPAWVPSVTWRFQPVGTVEFHDLVTFTRDGGVQWDRSSSFRTRTAIEKAESSNNVRL
SISRASDTEAGKYQCVAELWRKNYNNTWTRLAERTSNLLEIRVLQPVTKLQVSKSKRTL TLVENKPIQLN
CSVKSQTSQNSHFVAVLWYVHKPSDADGKILKTTTHNSAFEYGTAAEEGLRARLQFERHVSGLFSLTVQ
RAEVSDSGSYCHVEEWLLSPNYAWYKLAEEVSGRTEVTVKQPSRLRLSQAQGNLSVLETRQVQLECVV
LNRTSITSQMLMVEWVVKPNHPERETVARLSRDATFHYGEEQAANKNLKGRHLHLESPSPGVYRLF IQNVAV
QDSGTYSCHVEEWLPSPSGMWKRAEDTAGQTALVMPDASLQVDTVVPNATVSEKAQFLDCSIVSRS
SQDSRFVAVWYSLR TKAGGKRSSPGLLEEQEEREEEEEDDDDDPTERTALLSVGPDAVFGPEGSPW
EGRLRFQRLSPVLYRLTVLQASPQDTGNYSCHVEEWLPSPQKEWYRLTEESAPIGIRVLDTSPTLQSI I
CSNDALFYVFFYPPIFGIL IITILLVRFKSRNSSKNSDGNKGVPLLWIKEPHLYSPTCLEPPVLSIH
PGAID
  
```

TRTRPLEQKLISEEDLAANDILDYKDDDDK

Chromatograms: https://cdn.origene.com/chromatograms/mk6610_g12.zip

Restriction Sites: SgfI-MluI

Cloning Scheme:

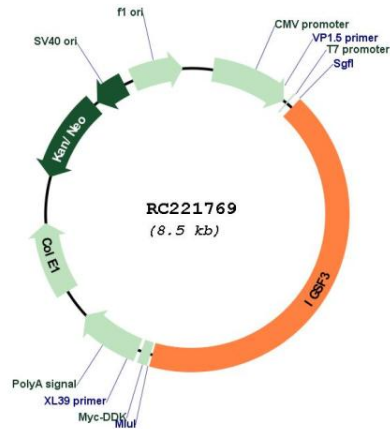


ACCN: NM_001007237

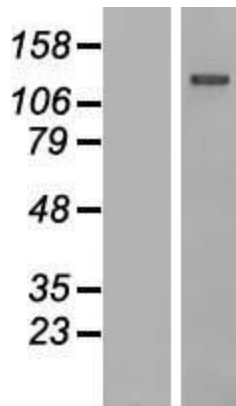
ORF Size: 3585 bp

OTI Disclaimer:	The molecular sequence of this clone aligns with the gene accession number as a point of reference only. However, individual transcript sequences of the same gene can differ through naturally occurring variations (e.g. polymorphisms), each with its own valid existence. This clone is substantially in agreement with the reference, but a complete review of all prevailing variants is recommended prior to use. More info
OTI Annotation:	This clone was engineered to express the complete ORF with an expression tag. Expression varies depending on the nature of the gene.
Components:	The ORF clone is ion-exchange column purified and shipped in a 2D barcoded Matrix tube containing 10ug of transfection-ready, dried plasmid DNA (reconstitute with 100 ul of water).
Reconstitution Method:	<ol style="list-style-type: none"> 1. Centrifuge at 5,000xg for 5min. 2. Carefully open the tube and add 100ul of sterile water to dissolve the DNA. 3. Close the tube and incubate for 10 minutes at room temperature. 4. Briefly vortex the tube and then do a quick spin (less than 5000xg) to concentrate the liquid at the bottom. 5. Store the suspended plasmid at -20°C. The DNA is stable for at least one year from date of shipping when stored at -20°C.
RefSeq:	NM_001007237.3
RefSeq Size:	7284 bp
RefSeq ORF:	3585 bp
Locus ID:	3321
UniProt ID:	O75054
Cytogenetics:	1p13.1
Protein Families:	Transmembrane
MW:	135.3 kDa
Gene Summary:	The protein encoded by this gene is an immunoglobulin-like membrane protein containing several V-type Ig-like domains. A mutation in this gene has been associated with bilateral nasolacrimal duct obstruction (LCDD). [provided by RefSeq, Jun 2016]

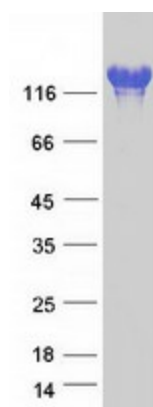
Product images:



Circular map for RC221769



Western blot validation of overexpression lysate (Cat# [LY423460]) using anti-DDK antibody (Cat# [TA50011-100]). Left: Cell lysates from untransfected HEK293T cells; Right: Cell lysates from HEK293T cells transfected with RC221769 using transfection reagent MegaTran 2.0 (Cat# [TT210002]).



Coomassie blue staining of purified IGSF3 protein (Cat# [TP321769]). The protein was produced from HEK293T cells transfected with IGSF3 cDNA clone (Cat# RC221769) using MegaTran 2.0 (Cat# [TT210002]).