

Product datasheet for **RC221768**

RHBDL1 (NM_003961) Human Tagged ORF Clone

Product data:

Product Type:	Expression Plasmids
Product Name:	RHBDL1 (NM_003961) Human Tagged ORF Clone
Tag:	Myc-DDK
Symbol:	RHBDL1
Synonyms:	RHBDL; RRP
Mammalian Cell Selection:	Neomycin
Vector:	pCMV6-Entry (PS100001)
E. coli Selection:	Kanamycin (25 ug/mL)



[View online »](#)

ORF Nucleotide Sequence:

>RC221768 ORF sequence
 Red=Cloning site Blue=ORF Green=Tags(s)

TTTTGTAATACGACTCACTATAGGGCGGCCGGAATTCGTCGACTGGATCCGGTACCGAGGAGATCTGCC
 GCC**GCGATCGCC**

ATGGGTAGGGTGAAGACGGGGAACTGAGGAGCTGGAGACTGGGACCCAGGCACCACTGCCCTGC
 CAGCTCCTGGGATCAAGCAGGGTCCCAGGGAACAGACAGGCACGGGGCCCTGTCCCAAAGTGCTGGGA
 GCCTGAGCCTGATGCTCCAGCCAGCCTGGCCAGCCCTTTGGTCCAGGGGTGCGGCCCGCACTCAGGCC
 TTGGCTGGCGGCTCCTACTGCAGCAGCTGGACCCGAGAACACAGGCTTCATCGGTGCGGACACCTTCA
 CTGGCCTGGTGCACAGCCATGAGCTGCCCTGGACCCGGCCAAGCTGGACATGCTGGTGGCCCTGGCTCA
 GAGCAACGAGCAGGGCCAGGTCTGCTACCAGGAGCTGGTGGACCTGATCAGCAGCAAGCGCTCCAGCAGT
 TTCAAGCGGGCCATTGCTAACGGACAGCGGGCACTGCCCGGGACGGGCCGCTGGATGAGCCAGGCTAG
 GTGTCTACAAGCGGTTTGTGCGTTACGTGGCCTACGAGATCCTGCCTTGTGAGGTGGACCCGCGTGGTA
 CTTCTACCGTCACCGCAGCTGCCACCCCGTGTTCATGGCCTCGGTCCTTTGCCAGATCATCGTG
 TTCTGTGTTACGGGGCCCGCTCAACAAGTGGGTGCTGCAGACCTACCACCCGAGTACATGAAGAGCC
 CCCTTGTGTACCACCCGGGCACCGTGCCCGCGCTGGCGCTTCTCACCTACATGTTTCATGCAGTTGG
 GCTGGAGCAGCTGGGGTTCAACGCCCTCCTGCAGCTGATGATCGGGGTGCCCTGGAGATGGTGCACGGC
 CTGCTCCGCATCAGCCTGCTCTACCTGGCAGGCGTGTGGCAGGCTCCCTAACCGTCTCCATCACCAGCA
 TGCGGGCCCCGGTGGTGGGAGGCTCCGGCGGGTCTACGCCCTGTGCTCGGCACACCTGGCCAACGTTGT
 CATGAAGTGGGCTGGGATGAGATGTCCCTACAAGTTGCTGAGGATGGTGTGGCCTTGGTGTGCATGAGC
 TCCGAGGTGGGCCGGCCGTGTGGTGCCTTCTCCCCGCGCTGCCCGCTCGGGCCACAGCCAGCT
 TCATGGCGCACCTGGCAGGCGGCTGGTGGGGTGAGCATGGCCCTGACCATCCTGCGGAGCTACGAGGA
 GCGCCTCGGGGACAGTGCGGCTGGTGGGTGGTGTGCTGCTGGCCTACGGCACCTTCTCTGCTTTCGCGTC
 TTCTGGAACGTCTTCGCTACGACCTGCTGGGCGCCACATCCCCCACCGCC

ACGCGTACGCGGCCGCTCGAGCAGAACTCATCTCAGAAGAGGATCTGGCAGCAAATGATATCCTGGATT
 ACAAGGATGACGACGATAAGGTTTAA

Protein Sequence:

>RC221768 protein sequence
 Red=Cloning site Green=Tags(s)

MGRVEDGGTTEELEDWDPGTSALPAPGIKQGPREQTGTGPLSQKWEPEPDAPSQPGPALWSRGRARTQA
 LAGGSSLQQLDPENTGFIGADTFGLVHSHELPLDPAKLDMLVALAQSNEQGQVCYQELVDLISSKRSS
 FKRAIANGQRALPRDGPLEPGLGVYKRFVRYVAYEILPCEVDRRWYFYRHRSCPPPVFMASVTLAQIIV
 FLCYGARLNKWLQTYHPEYMKSPVYHPGHRARAWRFLTYMFMHVGLEQLGFNALLQLMIGVPLEMVHG
 LLRISLLYLAGVLAGSLTVSITDMRAPVVGSGGVYALCSAHLANVVMNWAGMRCYPKLLRMVLALVCM
 SEVGRAVWLRFSPPLPASGPQPSFMAHLAGAVGVSMGLTILRSYEERLRDQCGWVVVLLAYGTFLFAV
 FWNVFAVDLLGAHIPP

TRTRPLEQKLISEEDLAANDILDYKDDDDKV

Chromatograms:

https://cdn.origene.com/chromatograms/mk6445_a01.zip

Restriction Sites:

Sgfl-Mlul

Cloning Scheme:


ACCN: NM_003961

ORF Size: 1314 bp

OTI Disclaimer: The molecular sequence of this clone aligns with the gene accession number as a point of reference only. However, individual transcript sequences of the same gene can differ through naturally occurring variations (e.g. polymorphisms), each with its own valid existence. This clone is substantially in agreement with the reference, but a complete review of all prevailing variants is recommended prior to use. [More info](#)

OTI Annotation: This clone was engineered to express the complete ORF with an expression tag. Expression varies depending on the nature of the gene.

Components: The ORF clone is ion-exchange column purified and shipped in a 2D barcoded Matrix tube containing 10ug of transfection-ready, dried plasmid DNA (reconstitute with 100 ul of water).

Reconstitution Method:

1. Centrifuge at 5,000xg for 5min.
2. Carefully open the tube and add 100ul of sterile water to dissolve the DNA.
3. Close the tube and incubate for 10 minutes at room temperature.
4. Briefly vortex the tube and then do a quick spin (less than 5000xg) to concentrate the liquid at the bottom.
5. Store the suspended plasmid at -20°C. The DNA is stable for at least one year from date of shipping when stored at -20°C.

RefSeq: [NM_003961.1](#), [NP_003952.1](#)

RefSeq Size: 1559 bp

RefSeq ORF: 1316 bp

Locus ID: 9028

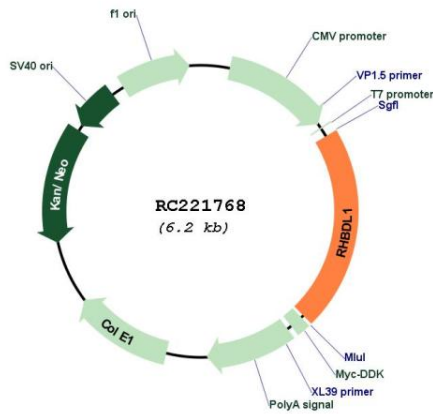
Cytogenetics: 16p13.3

Protein Families: Protease, Transmembrane

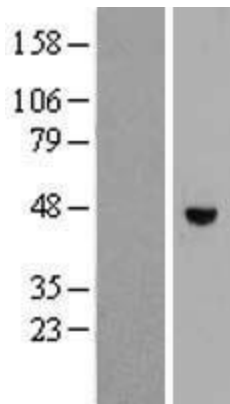
MW: 48.3 kDa

Gene Summary: This gene encodes a protein similar to Rhomboid in *Drosophila* which is involved in signalling in the Spitz/epidermal growth factor receptor/mitogen-activated protein kinase pathway. The Rhomboid family of proteins consists of intramembrane serine proteases containing several transmembrane domains. Alternative splicing results in multiple transcript variants encoding different isoforms. [provided by RefSeq, Jul 2013]

Product images:



Circular map for RC221768



Western blot validation of overexpression lysate (Cat# [LY418311]) using anti-DDK antibody (Cat# [TA50011-100]). Left: Cell lysates from untransfected HEK293T cells; Right: Cell lysates from HEK293T cells transfected with RC221768 using transfection reagent MegaTran 2.0 (Cat# [TT210002]).