

Product datasheet for **RC221767**

TGIF2LX (NM_138960) Human Tagged ORF Clone

Product data:

| | |
|---------------------------|---|
| Product Type: | Expression Plasmids |
| Product Name: | TGIF2LX (NM_138960) Human Tagged ORF Clone |
| Tag: | Myc-DDK |
| Symbol: | TGIF2LX |
| Synonyms: | TGIFLX |
| Mammalian Cell Selection: | Neomycin |
| Vector: | pCMV6-Entry (PS100001) |
| E. coli Selection: | Kanamycin (25 ug/mL) |
| ORF Nucleotide Sequence: | >RC221767 ORF sequence Red=Cloning site Blue=ORF Green=Tags(s) |

TTTTGTAATACGACTCACTATAGGGCGCCGGGAATTCGTCGACTGGATCCGGTACCGAGGAGATCTGCC
GCC**CGATCGCC**

ATGGAGGCCGCTGCGGACGGCCCGGCTGAGACCCAAAGCCCGGTGGAAAAAGACAGCCCGGCGAAGACCC
AAAGCCCAGCCCAAGACACCTCAATCATGTGAGAAATAACGCAGATACAGGCAGAGTTCTTGCCTTACC
AGAGCACAGAAGAAGCGCAAGGAAACTTGCCAGCCGAGTCCGTTAAGATCCTCCGCGACTGGATGTAT
AAGCATCGTTTTAAGCCTACCTTCAGAAGAAGAGAAGCAAATGCTGTCAGAGAAGACCAATTTGTCTT
TGTTGCAGATTTCTAACTGGTTTATCAATGCTCGCAGACGCATTCTCCCGGATATGCTTCAACAGCGTAG
AAACGACCCCATATTGGCCACAAAACGGCAAAGATGCCCATGCCACCCACCTGCAGAGCACCGAGGCG
TCTGTGCCGCAAGTCAGGGCCAGTGGTCCAGACAATGTACAAAGCCTGCCCTGTGGCCCTTGCCAA
AGGGCCAGATGTCAAGAGAGAAGCAACCAGATCCGGAGTCGGCCCTAGCCAGAAGCTCACCGGAATAGC
CCAGCCGAAGAAAAGGTCAAGTTTTCTATCACATCCCCGTCTTCTCCAGAACTTGTGTCTCCAGAGGAG
CACGCCGACTTCAGCAGTTCTGTGCTAGTCGATGCAGCAGTACAAAGGGCTGCCGAGCTGGAGCTAG
AGAAGAAGCAAGAGCCTAATCCA

ACGCGTACGCGGCCGCTCGAGCAGAACTCATCTCAGAAGAGGATCTGGCAGCAAATGATATCCTGGATT
ACAAGGATGACGACGATAAGGTTTAA



[View online »](#)

Protein Sequence: >RC221767 protein sequence
 Red=Cloning site Green=Tags(s)

MEAAADGPAETQSPVEKDSPAQTQSPAQDTSIMSRNADTGRVLAPEHKKKRRKGNLPAESVKILRDWMY
 KHRFKAYPSEEEKQMLSEKTNLSLLQISNWFINARRRILPDMQQRRNDPIIGHKTKGDAHATHLQSTEA
 SVPKSGPSGPDNVQSLPLWPLPKGQMSREKQPDPEAPSQKLTGIAQPKKKVKVYSITSPSSPELVSPPE
 HADFSFLLLVDAAVQRAAELELEKKQEPNP

TRTRPLEQKLISEEDLAANDILDYKDDDDKV

Chromatograms: https://cdn.origene.com/chromatograms/mk6463_d09.zip

Restriction Sites: SgfI-MluI

Cloning Scheme:

Cloning sites used for ORF Shuttling:



* The last codon before the Stop codon of the ORF

ACCN: NM_138960

ORF Size: 723 bp

OTI Disclaimer: The molecular sequence of this clone aligns with the gene accession number as a point of reference only. However, individual transcript sequences of the same gene can differ through naturally occurring variations (e.g. polymorphisms), each with its own valid existence. This clone is substantially in agreement with the reference, but a complete review of all prevailing variants is recommended prior to use. [More info](#)

OTI Annotation: This clone was engineered to express the complete ORF with an expression tag. Expression varies depending on the nature of the gene.

Components: The ORF clone is ion-exchange column purified and shipped in a 2D barcoded Matrix tube containing 10ug of transfection-ready, dried plasmid DNA (reconstitute with 100 ul of water).

Reconstitution Method:

1. Centrifuge at 5,000xg for 5min.
2. Carefully open the tube and add 100ul of sterile water to dissolve the DNA.
3. Close the tube and incubate for 10 minutes at room temperature.
4. Briefly vortex the tube and then do a quick spin (less than 5000xg) to concentrate the liquid at the bottom.
5. Store the suspended plasmid at -20°C. The DNA is stable for at least one year from date of shipping when stored at -20°C.

RefSeq: [NM_138960.1](#)

RefSeq Size: 881 bp

RefSeq ORF: 726 bp

Locus ID: 90316

UniProt ID: [Q8IUUE1](#)

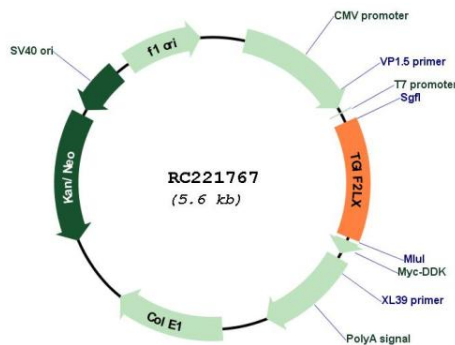
Cytogenetics: Xq21.31

Protein Families: Transcription Factors

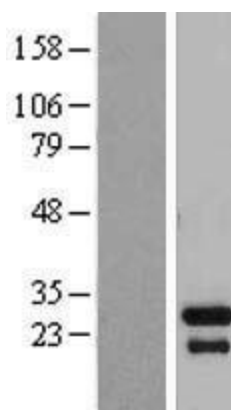
MW: 26.7 kDa

Gene Summary: This gene encodes a member of the TALE/TGIF homeobox family of transcription factors. Testis-specific expression suggests that this gene may play a role in spermatogenesis. A homolog of this gene lies within the male specific region of chromosome Y, in a block of sequence that is thought to be the result of a large X-to-Y transposition. [provided by RefSeq, Jul 2008]

Product images:



Circular map for RC221767



Western blot validation of overexpression lysate (Cat# [LY408392]) using anti-DDK antibody (Cat# [TA50011-100]). Left: Cell lysates from untransfected HEK293T cells; Right: Cell lysates from HEK293T cells transfected with RC221767 using transfection reagent MegaTran 2.0 (Cat# [TT210002]).