

## Product datasheet for **RC221759**

### **FUSIP1 (SRSF10) (NM\_006625) Human Tagged ORF Clone**

#### Product data:

**Product Type:** Expression Plasmids  
**Product Name:** FUSIP1 (SRSF10) (NM\_006625) Human Tagged ORF Clone  
**Tag:** Myc-DDK  
**Symbol:** FUSIP1  
**Synonyms:** FUSIP1; FUSIP2; NSSR; PPP1R149; SFRS13; SFRS13A; SRp38; SRp40; TASR; TASR1; TASR2  
**Mammalian Cell Selection:** Neomycin  
**Vector:** pCMV6-Entry (PS100001)  
**E. coli Selection:** Kanamycin (25 ug/mL)  
**ORF Nucleotide Sequence:** >RC221759 ORF sequence  
Red=Cloning site Blue=ORF Green=Tags(s)

TTTTGTAATACGACTCACTATAGGGCGCCGGGAATTCGTCGACTGGATCCGGTACCGAGGAGATCTGCC  
GCC**CGATCGCC**

ATGTC**CCGCTACCTGCGT**CCCCCAACACGTCTCTGTT**CGTCAGGAACGTGGCCGACGACACCAGGTCTG**  
AAGACTT**CGGCGTGAATTTGGTCGTTATGGTCTATAGTTGATGTGTATGTTCCACTTGATTTCTACAC**  
TCGCC**TCCAAGAGGATTTGCTTATGTTCAATTTGAGGATGTTGTCGATGCTGAAGACGCTTTACATAAT**  
TTGGACAGAAAGTGGATTTG**TGGACGGCAGATTGAAATACAGTTTGCCCAGGGGGATCGAAAGACACCAA**  
ATCAGATGAAAGCCAAGGAAGGGAGGAATGTGTACAGTTCTT**CAGCTATGATGATTATGACAGATACAG**  
ACGTTCTAGAAAGCCAAGTTATGAAAGGAGGAGATCAAGAAGTCGGTCTTTT**GATTACAATATAGAAGA**  
TCGTATAGTCCTAGAAACAGTAGACCGACTGGAAGACCACGGCGTAGCAGAAAGCCATTCCGACAATGATA  
GACCAACTGCAGCTGGAATACCCAGTACAGTTCTGCTTACTACACTTCAAGAAAGATC

**ACGCGT**ACGCGGCCGCTCGAGCAGAACTCATCTCAGAAAGAGGATCTGGCAGCAAATGATATCCTGGATT  
ACAAGGATGACGACGATAAGGTTTAA

**Protein Sequence:** >RC221759 protein sequence  
Red=Cloning site Green=Tags(s)

MSRYLRPPNTSLFVRNVADDTRSEDLRREFGRYGP**IVDVYVPLDFYTRRPRGFAYVQFEDV**RDALHN  
LDRKWICGRQIEIQFAQGDRKTPNQMKAKEGRNVYSSRYDDYDRYRRSRYSYERRRSRSDYNYRR  
SYSPRNSRPTGRPRRSRSHSDNDRPNCSWNTQYSSAYYTSRK**I**

**TRTRPLEQKLISEEDLAANDILDYKDDDDKV**

**Chromatograms:** [https://cdn.origene.com/chromatograms/mk6392\\_d06.zip](https://cdn.origene.com/chromatograms/mk6392_d06.zip)



Restriction Sites: SgfI-MluI

Cloning Scheme:



ACCN: NM\_006625

ORF Size: 549 bp

OTI Disclaimer: The molecular sequence of this clone aligns with the gene accession number as a point of reference only. However, individual transcript sequences of the same gene can differ through naturally occurring variations (e.g. polymorphisms), each with its own valid existence. This clone is substantially in agreement with the reference, but a complete review of all prevailing variants is recommended prior to use. [More info](#)

OTI Annotation: This clone was engineered to express the complete ORF with an expression tag. Expression varies depending on the nature of the gene.

Components: The ORF clone is ion-exchange column purified and shipped in a 2D barcoded Matrix tube containing 10ug of transfection-ready, dried plasmid DNA (reconstitute with 100 ul of water).

Reconstitution Method:

1. Centrifuge at 5,000xg for 5min.
2. Carefully open the tube and add 100ul of sterile water to dissolve the DNA.
3. Close the tube and incubate for 10 minutes at room temperature.
4. Briefly vortex the tube and then do a quick spin (less than 5000xg) to concentrate the liquid at the bottom.
5. Store the suspended plasmid at -20°C. The DNA is stable for at least one year from date of shipping when stored at -20°C.

RefSeq: [NM\\_006625.6](#)

RefSeq Size: 4076 bp

RefSeq ORF: 552 bp

Locus ID: 10772

UniProt ID: [O75494](#)

**Cytogenetics:** 1p36.11

**Domains:** RRM

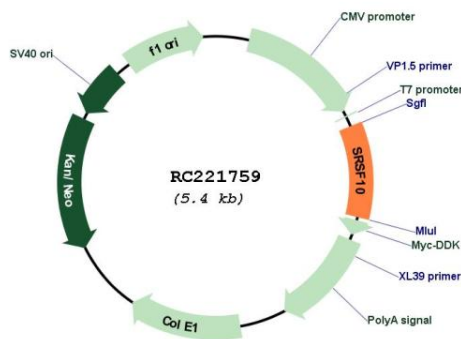
**Protein Families:** Transcription Factors

**Protein Pathways:** Spliceosome

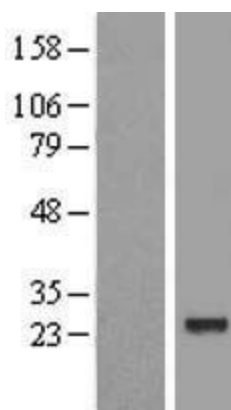
**MW:** 22.2 kDa

**Gene Summary:** This gene product is a member of the serine-arginine (SR) family of proteins, which are involved in constitutive and regulated RNA splicing. Members of this family are characterized by N-terminal RNP1 and RNP2 motifs, which are required for binding to RNA, and multiple C-terminal SR/RS repeats, which are important in mediating association with other cellular proteins. This protein interacts with the oncoprotein TLS, and abrogates the influence of TLS on adenovirus E1A pre-mRNA splicing. This gene has pseudogenes on chromosomes 4, 9, 14, 18, and 20. Alternative splicing results in multiple transcript variants. [provided by RefSeq, Jul 2014]

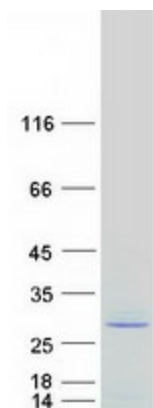
**Product images:**



Circular map for RC221759



Western blot validation of overexpression lysate (Cat# [LY416515]) using anti-DDK antibody (Cat# [TA50011-100]). Left: Cell lysates from untransfected HEK293T cells; Right: Cell lysates from HEK293T cells transfected with RC221759 using transfection reagent MegaTran 2.0 (Cat# [TT210002]).



Coomassie blue staining of purified SRSF10 protein (Cat# [TP321759]). The protein was produced from HEK293T cells transfected with SRSF10 cDNA clone (Cat# RC221759) using MegaTran 2.0 (Cat# [TT210002]).