

## Product datasheet for **RC221758**

### **GYPE (NM\_002102) Human Tagged ORF Clone**

#### **Product data:**

**Product Type:** Expression Plasmids  
**Product Name:** GYPE (NM\_002102) Human Tagged ORF Clone  
**Tag:** Myc-DDK  
**Symbol:** GYPE  
**Synonyms:** GPE; GYPA; MiIX; MNS  
**Mammalian Cell Selection:** Neomycin  
**Vector:** pCMV6-Entry (PS100001)  
**E. coli Selection:** Kanamycin (25 ug/mL)  
**ORF Nucleotide Sequence:** >RC221758 representing NM\_002102  
**Red=Cloning site Blue=ORF Green=Tags(s)**

TTTTGTAATACGACTCACTATAGGGCGGCCGGAATTCGTCGACTGGATCCGGTACCGAGGAGATCTGCC  
GCC**CGATCGCC**

ATGTATGGAAAAAATAATCTTTGTATTACTATTGTCAGGAATTGTGAGCATATCAGCATCAAGTACCACTG  
GTGTGGCAATGCACACTTCAACCTCTTCTTCAGTCACAAAGAGTTACATCTCATCACAGACAAATGGGAT  
AACACTCATAATTGGTGGCGGATGGCTCGTGTTATTTTTGAGGTGATGCTTGTGTGGTGGGAATGATC  
ATCTTAATTTCTTACTGTATTCTGA

**ACGCGT**ACGCGGCCGCTCGAGCAGAAACTCATCTCAGAAGAGGATCTGGCAGCAAATGATATCCTGGATT  
ACAAGGATGACGACGATAAGGTTTAA

**Protein Sequence:** >RC221758 representing NM\_002102  
**Red=Cloning site Green=Tags(s)**  
MYGKIIFVLLLSGIVSISASSTTGVMHTSTSSSVTKSYISSQTNGITLINWWAMARVIFEVMLVVVGMII  
LISYICIR

**TRTRPLEQKLISEEDLAANDILDYKDDDDKV**

**Chromatograms:** [https://cdn.origene.com/chromatograms/mk6439\\_a11.zip](https://cdn.origene.com/chromatograms/mk6439_a11.zip)

**Restriction Sites:** Sgfl-MluI



[View online »](#)

**Cloning Scheme:**



**ACCN:** NM\_002102

**ORF Size:** 234 bp

**OTI Disclaimer:** The molecular sequence of this clone aligns with the gene accession number as a point of reference only. However, individual transcript sequences of the same gene can differ through naturally occurring variations (e.g. polymorphisms), each with its own valid existence. This clone is substantially in agreement with the reference, but a complete review of all prevailing variants is recommended prior to use. [More info](#)

**OTI Annotation:** This clone was engineered to express the complete ORF with an expression tag. Expression varies depending on the nature of the gene.

**Components:** The ORF clone is ion-exchange column purified and shipped in a 2D barcoded Matrix tube containing 10ug of transfection-ready, dried plasmid DNA (reconstitute with 100 ul of water).

- Reconstitution Method:**
1. Centrifuge at 5,000xg for 5min.
  2. Carefully open the tube and add 100ul of sterile water to dissolve the DNA.
  3. Close the tube and incubate for 10 minutes at room temperature.
  4. Briefly vortex the tube and then do a quick spin (less than 5000xg) to concentrate the liquid at the bottom.
  5. Store the suspended plasmid at -20°C. The DNA is stable for at least one year from date of shipping when stored at -20°C.

**RefSeq:** [NM\\_002102.4](#)

**RefSeq Size:** 499 bp

**RefSeq ORF:** 237 bp

**Locus ID:** 2996

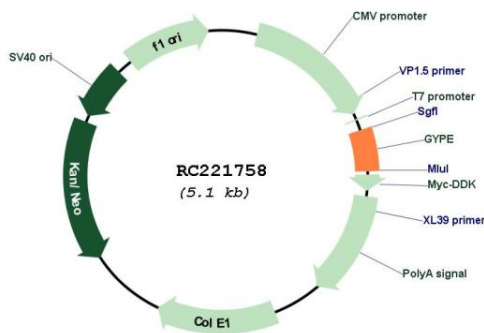
UniProt ID: [P15421](#)

Cytogenetics: 4q31.21

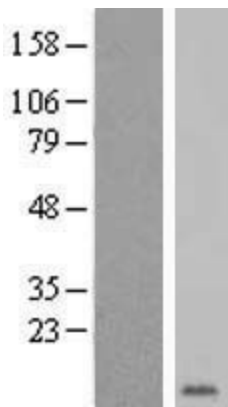
MW: 8.46 kDa

**Gene Summary:** The protein encoded by this gene is a sialoglycoprotein and a type I membrane protein. It is a member of a gene family with GPA and GPB genes. This encoded protein might carry the M blood group antigen. GYPA, GYPB, and GYPE are organized in tandem on chromosome 4. This gene might have derived from an ancestral gene common to the GPB gene by gene duplication. Two alternatively spliced transcript variants encoding the same protein have been described for this gene. [provided by RefSeq, Jul 2008]

**Product images:**



Circular map for RC221758



Western blot validation of overexpression lysate (Cat# [LY419538]) using anti-DDK antibody (Cat# [TA50011-100]). Left: Cell lysates from untransfected HEK293T cells; Right: Cell lysates from HEK293T cells transfected with RC221758 using transfection reagent MegaTran 2.0 (Cat# [TT210002]).