

Product datasheet for RC221742

REV1 (NM_016316) Human Tagged ORF Clone

Product data:

Product Type:	Expression Plasmids
Product Name:	REV1 (NM_016316) Human Tagged ORF Clone
Tag:	Myc-DDK
Symbol:	REV1
Synonyms:	AIBP80; REV1L
Mammalian Cell Selection:	Neomycin
Vector:	pCMV6-Entry (PS100001)
E. coli Selection:	Kanamycin (25 ug/mL)
ORF Nucleotide Sequence:	>RC221742 representing NM_016316 Red=Cloning site Blue=ORF Green=Tags(s)

TTTTGTAATACGACTCACTATAGGGCGGCCGGAATTCGTCGACTGGATCCGGTACCGAGGAGATCTGCC
GCC**CGATCGCC**

ATGAGCGAGGTGGATGGAGGAAGCGAGCTGAAAATGATGGCTGGGAAACATGGGGTGGGTATATGGCTG
CCAAGTCCAGAAATGGAGGAACAGTTTCGATCAGATGCTGCTATGCAGAAGGATGGGACTTCATCTAC
AATTTTTAGTGGAGTTGCCATCTATGTTAATGGATACACAGATCCTTCCGCTGAGGAATTGAGAAAATA
ATGATGTTGCATGGAGGTCAATACCATGTATATTCCAGATCTAAAACAACACATATTATTGCCACAA
ATCTTCCAATGCCAAAATTAAGAATTAAGGGGGAAAAAGTAATTCGACCAGAATGGATTGTGGAAAG
CATCAAAGCTGGACGACTCCTCTCTACATTCCATATCAGCTGTACACCAAGCAGTCCAGTGTGCAGAAA
GGTCTCAGCTTTAATCCTGTATGCAGACCTGAGGATCCTCTGCCAGGTCCAAGCAATATAGCCAAACAGC
TCAACAACAGGGTAAATCACATCGTTAAGAAGATTGAAACGGAAAATGAAGTCAAAGTCAATGGCATGAA
CAGTTGGAATGAAGAAGATGAAAATAATGATTTTAGTTTTGTGGATCTGGAGCAGACCTCTCCGGGAAGG
AAACAGAAATGGAATCCGCATCCCAGAGGGAGCACTGCCATTTTTAATGGACACACTCCTAGCTCTAATG
GTGCCTTAAAGACACAGGATTGCTTGGTGCCATGGTCAACAGTGTGCCAGCAGGCTTTCTCCAGCCTT
TTCCCAGGAGGAGGATAAGGCTGAGAAGAGCAGCACTGATTTAGAGACTGCACCTGCAGCAGTTGCAG
CAAAGCACCAGAAACACAGATGCTTTGCCGAATCCACACAGAATAATTTCTCATTACACCTTTTGC
ACAGTAACTAAAATCAATGGTGCTCACCCTCCACTGTTCCAGGGCCTTCAAGCACAAAAAGCACTTC
TTCAGTATCTACGTTTAGCAAGGCAGCACCTTCAGTGCCATCCAACCTTCAGACTGCAATTTTATTTC
AACTTCTATTCTCATTCAAGACTGCATCACATATCAATGTGGAAGTGTGAATTGACTGAGTTGTCAATA
CCCTACAAAGACAAAGTAAATGGTATCTTTCCAGGAAGGGAAAAAGTTAAAAAAAATGAAAACAGGCAGGTC
TGCACTTGTGTAAGTACACAGGAGATATGTCAGTATTGAATCTCCAGACATCAGAGCTGTATAATG
CATGTTGATATGGATTGCTTCTTTGTATCAGTGGGTATACGAAATAGACCAGATCTCAAAGGAAAACAG
TGGCTGTTACAAGTAACAGAGGCACAGGAAGGGCACCTTTACGTCCTGGCGCTAACCCCAAGCTGGAGTG
GCAGTATTACCAGAATAAAATCCTGAAAGGCAAAGCAGCAGATATACCAGATTCATTTGTGGGAGAAT



CCAGATTCTGCGCAAGCAAATGGAATTGATTCTGTTTTGTCAAGGGCTGAAATTGCATCTTGTAGTTATG
AGGCCAGGCAACTTGGCATTAAAGAACGGAATGTTTTTGGGCATGCTAAACAACATATGTCCTAATCTTCA
AGCTGTTCCATACGATTTTCATGCATATAAGGAAGTCGCACAAACATTGTATGAAACATTGGCAAGCTAC
ACTCATAACATTGAAGCTGTCAGTTGTGATGAAGCGCTGGTAGACATTACCGAAATCCTTGCAGAGACCA
AACTTACTCCTGATGAATTTGCAAATGCTGTTTCGTATGGAATCAAAGACCAGACGAAATGTGCTGCCTC
TGTTGGAATTGGTTCTAATATTTCTCTGGCTAGAATGGCAACTAGAAAAGCAAACCAGATGGGCAGTAC
CACCTAAAACCAGAAGAAGTAGATGATTTTATCAGAGGCCAGCTAGTGACCAATCTACCAGGAGTTGGAC
ATTCAATGGAATCTAAGTTGGCATCTTTGGGAATTAACACTTGTGGAGACTTGAGTATATGACCATGGC
AAAACCTCAAAAAGAATTTGGTCCAAAACAGGTGAGATGCTTTATAGGTTCTGCCGTGGCTTGATGAT
AGACCAGTTGCAACTGAAAAGGAAAGAAAATCTGTTTCAGCTGAGATCAACTATGGAATAAGGTTTACTC
AGCCAAAAGAGGCAGAAGCTTTTCTTCTGAGTCTTTCAGAAGAAATCAAAGAAGACTAGAAGCCACTGG
CATGAAGGTAACGCTAACTCTAAAATCATGGTACGAAAGCCTGGGGCTCCTGTAGAAAAGTCAAAA
TTTGGAGGCCATGGAATTTGTGATAACATTGCCAGGACTGTAACCTTGACCAGGCAACAGATAATGCAA
AAATAATTGGAAGGCGATGCTAAACATGTTTCATACAATGAAACTAAATATATCAGATATGAGAGGGGT
TGGGATTCAGTGAATCAGTTGGTTCCAATACTGAACCTTCCACATGTCCAGTCGCCCATCAGTT
CAGTCAAGCCACTTTCTAGTGGTTCATCTGTCCGTGATGTCTTCCAAGTTCAGAAAGCTAAGAAAT
CCACCGAAGAGGAGCACAAGAAGTATTTCCGGGCTGCTGTGGATCTGGAATATCATCTGCTTCTAGAAC
TTGCACTTTCTTGCCACCTTTTCTGACATCTGCCGACCAGTCTGATACTAACAAGGCTGAGTCTTCA
GGGAAATGGAATGGTCTACATACTCCTGTGAGTGTGCAGTCGAGACTTAACCTGAGTATAGAGGTCCTGT
CACCTTCCAGCTGGATCAGTCTGTTTTAGAAGCACTTCCACCTGATCTCCGGGAACAAGTAGAGCAAGT
CTGTGCTGTCCAGCAAGCAGAGTCACATGGCGACAAAAGAAAGAACAGTAAATGGCTGTAATACAGGA
AATTTGCCACAACCAGTTGGGACAGTCTTGTGCAAATACCAGAACCTCAAGAATCGAACAGTGACGCAG
GAATAAATTTAATAGCCCTTCCAGCATTTCACAGGTGGACCCTGAGGTATTTGCTGCCCTTCTGCTGA
ACTTCAGAGGGAGCTGAAAGCAGCGTATGATCAAAGACAAAGGCAGGGCGAGAACAGCACTACCAGCAG
TCAGCCAGCGCATCTGTGCCAAAGAATCCTTTACTTTCATCTAAAGGCAGCAGTGAAGAAAAGAAAAGAA
ACAAGAAGAAAAAACATTGGTTACCAAAAAGGATTGAGAGTCTTTGAATAACAAGCTGCTTAACAG
TCCTGCAAAAACCTGCCAGGGGCTGTGGCAGTCCCCAGAAAGTAAATTGATGGGTTTCTAAAACATGAA
GGACCTCCTGCAGAGAAACCCCTGGAAGAACTCTCTGCTTCTACTTCAGGTGTGCCAGGCCCTTCTAGTT
TGCAGTCTGACCCAGCTGGCTGTGTGAGACCTCCAGCACCAATCTAGCTGGAGCTGTTGAATTCATGA
TGTGAAGACCTTGCTCAGAGAATGGATAACTACAATTTCCAGATCCAATGGAAGAAGACATCTCCAAGTT
GTGAAATACTGTACTGATCTAATAGAAGAAAAAGATTTGGAAAACTGGATCTAGTTATAAAATACATGA
AAAGGCTGATGCAGCAATCGGTGGAATCGGTTTGGAAATATGGCATTGACTTTATTTCTTGACAATGTCCA
GGTGGTTTTACAACAACTTATGGAAGCACATTAAGTTACA

ACGCGTACGCGGCCGCTCGAGCAGAACTCATCTCAGAAGAGGATCTGGCAGCAATGATATCCTGGATT
ACAAGGATGACGACGATAAGGTTAA

Protein Sequence: >RC221742 representing NM_016316
 Red=Cloning site Green=Tags(s)

```
MRRGGWRKRAENDGWETWGGYMAAKVQKLEEQFRSDAAMQKDGTSSTIFSGVAIYVNGYTDPSAEELRKL
MMLHGGQYHVYYSRKTTHIIATNL PNAKIKELKGEKVI RPEWIVESIKAGRLLSYIPYQLYTKQSSVQK
GLSFNPVCRPEDPLPGPSNIAKQLNRRVNHIVK IETENEVKVNGMNSWNEEDENDFSFVDLEQTS PGR
KQNGIPHRGSTAIFNGHTPSSNGALKTDCLVPMVNSVASRLSPAFSQEEDKAEKSSDFRDCTLQQLQ
QSTRNTDALRNPHTNSFSL SPLHSNTKINGAHHSTVQGPSSTKSTSSVSTF SKAAPSVPSKPSDCNFIS
NFYSHSRLHHISMWKCELTEFVNTLQRQNSGIFPGREK LKMKGTGRSALVVTDTGMSVLSNPRHQCIM
HYDMDCFFVSVGIRNRPDLKGPVAVTSNRGTGRAPLRPGANPQLEWQYYQNKILKGAADIPDSSLWEN
PDSAQANGIDSVLSRAEIASCSYEARQLGIKNGMFFGHAKQLCPNLQAVPYDFHAYKEVAQTL YETLAS
YTHNIEAVSCDEALVDITEILAETKLT PDEFANAVRMEIKDQTKCAASVIGSNILLARMATRKAKPDGQY
HLKPEEVDDFIRGQLVTNLPGVGHSMESKLASLGIKTCGDLQYMTMAKLQKEFGPKTGQMLYRFCRGLDD
RPV RTEKERKSVSAEINYGIRFTQPKAEAFLLSLSEEIQRRLEATGMKGKRLTLKIMVRKPGAPVETAK
FGGHGICDNIARTVTL DQATDNAK IIGKAMLMFHTMKLNISDMRGVGIHVNQLVPTNLNPSTCPSRPSV
QSSHFPSSGYSVRDVFVQVQAKKSTEEHKEVFRAAVDLEISSASRTCTFLPPFPAHLPTSPDTNKAESS
GKWNGLHTPVSVQSRNLNLSIEVPSPSQLDQSVLEALPPDLREQVEQVCAVQQAESHGDKKKEPVNGCNTG
ILPQPVGTVLLQIPEPQESNSDAGINLIALPAFSQVDPEVFAALPAELQRELKAA YDQRQRQGENSTHQQ
SASASVPKNPLLHLKAAVKEKRNK KKKKIGSPKRIQSPLNKKLLNSPAKTLPGACGSPQKLIDGFLKHE
GPPAEKPLEELSASTSGVPLSSLQSDPAGCVRPPAPNLAGAVEFNDVKTLLEWITTI SDPMEEDILQV
VKYCTDLIEEKDLEKLDLVIKYMKRLMQQSVESVWNMAFDFILDNVQVVLQQT YGSTLKV
```

TRTRPLEQKLISEEDLAANDILDYKDDDDKV

Chromatograms: https://cdn.origene.com/chromatograms/mk6204_f02.zip

Restriction Sites: SgfI-MluI

Cloning Scheme:

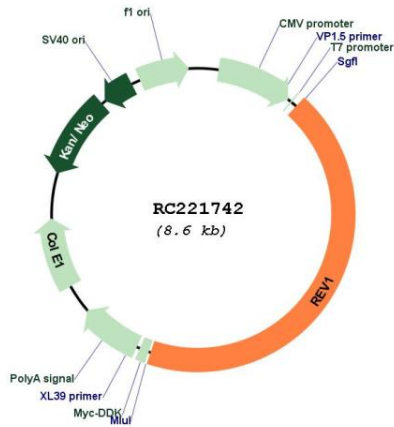


ACCN: NM_016316

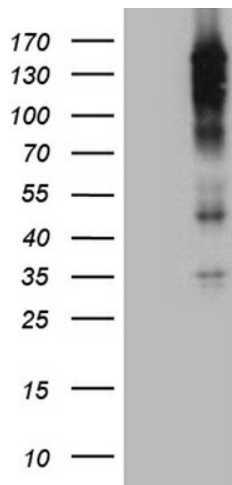
ORF Size: 3753 bp

OTI Disclaimer:	The molecular sequence of this clone aligns with the gene accession number as a point of reference only. However, individual transcript sequences of the same gene can differ through naturally occurring variations (e.g. polymorphisms), each with its own valid existence. This clone is substantially in agreement with the reference, but a complete review of all prevailing variants is recommended prior to use. More info
OTI Annotation:	This clone was engineered to express the complete ORF with an expression tag. Expression varies depending on the nature of the gene.
Components:	The ORF clone is ion-exchange column purified and shipped in a 2D barcoded Matrix tube containing 10ug of transfection-ready, dried plasmid DNA (reconstitute with 100 ul of water).
Reconstitution Method:	<ol style="list-style-type: none">1. Centrifuge at 5,000xg for 5min.2. Carefully open the tube and add 100ul of sterile water to dissolve the DNA.3. Close the tube and incubate for 10 minutes at room temperature.4. Briefly vortex the tube and then do a quick spin (less than 5000xg) to concentrate the liquid at the bottom.5. Store the suspended plasmid at -20°C. The DNA is stable for at least one year from date of shipping when stored at -20°C.
RefSeq:	NM_016316.4
RefSeq Size:	4276 bp
RefSeq ORF:	3756 bp
Locus ID:	51455
UniProt ID:	Q9UBZ9
Cytogenetics:	2q11.2
Domains:	IMS, BRCT
Protein Families:	Druggable Genome
MW:	138.1 kDa
Gene Summary:	This gene encodes a protein with similarity to the <i>S. cerevisiae</i> mutagenesis protein Rev1. The Rev1 proteins contain a BRCT domain, which is important in protein-protein interactions. A suggested role for the human Rev1-like protein is as a scaffold that recruits DNA polymerases involved in translesion synthesis (TLS) of damaged DNA. [provided by RefSeq, Mar 2016]

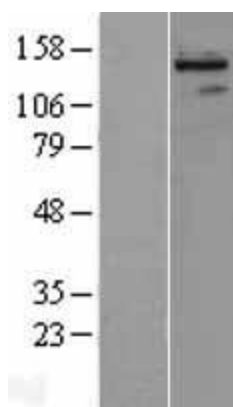
Product images:



Circular map for RC221742



HEK293T cells were transfected with the pCMV6-ENTRY control (Cat# [PS100001], Left lane) or pCMV6-ENTRY REV1 (Cat# RC221742, Right lane) cDNA for 48 hrs and lysed. Equivalent amounts of cell lysates (5 ug per lane) were separated by SDS-PAGE and immunoblotted with anti-REV1 (Cat# [TA811575])(1:2000). Positive lysates [LY402538] (100ug) and [LC402538] (20ug) can be purchased separately from OriGene.



Western blot validation of overexpression lysate (Cat# [LY402538]) using anti-DDK antibody (Cat# [TA50011-100]). Left: Cell lysates from untransfected HEK293T cells; Right: Cell lysates from HEK293T cells transfected with RC221742 using transfection reagent MegaTran 2.0 (Cat# [TT210002]).