

Product datasheet for RC221737

beta Arrestin 1 (ARRB1) (NM_020251) Human Tagged ORF Clone

Product data:

Product Type:	Expression Plasmids
Product Name:	beta Arrestin 1 (ARRB1) (NM_020251) Human Tagged ORF Clone
Tag:	Myc-DDK
Symbol:	beta Arrestin 1
Synonyms:	ARB1; ARR1
Mammalian Cell Selection:	Neomycin
Vector:	pCMV6-Entry (PS100001)
E. coli Selection:	Kanamycin (25 ug/mL)
ORF Nucleotide Sequence:	>RC221737 representing NM_020251 Red=Cloning site Blue=ORF Green=Tags(s)

TTTTGTAATACGACTCACTATAGGGCGGCCGGAATTCGTCGACTGGATCCGGTACCGAGGAGATCTGCC
GCC**CGATCGCC**

ATGGGCGACAAAGGGACCCGAGTGTTCAGAAGGCCAGTCCAAATGGAAAGCTCACCGTCTACCTGGGAA
AGCGGGACTTTGTGGACCACATCGACCTCGTGGACCTGTGGATGGTGTGGTCTGGTGGATCCTGAGTA
TCTCAAAGAGCGGAGAGTCTATGTGACGCTGACCTGCGCCTCCGCTATGGCCGGGAGGACCTGGATGTC
CTGGCCCTGACCTTCGCAAGGACCTGTTGTGGCCAACGTACAGTCGTTCCACCGGCCCCGAGGACA
AGAAGCCCTGACGCGGCTGCAGGAACGCCTCATCAAGAAGCTGGGCGAGCACGTTACCCCTTTCACCTT
TGAGATCCCTCCAAACCTTCCATGTTCTGTGACACTGCAGCCGGGCCGAAGACACGGGAAGGCTTGC
GGTGTGGACTATGAAGTCAAAGCCTTCTGCGCGGAGAATTTGGAGGAGAAGATCCACAAGCGGAATCTG
TGCGTCTGGTCATCCGGAAGTTTCAGTATGCCCCAGAGAGGCCTGGCCCCAGCCACAGCCGAGACCAC
CAGGCAGTTCTCATGTCCGACAAGCCCTTGCACCTAGAAGCCTCTCTGGATAAAGGAGATCTATTACCAT
GGAGAACCCATCAGCGTCAACGTCCACGTACCAACAACCAACAAGACGGTGAAGAAGATCAAGATCT
CAGTGCGCCAGTATGCAGACATCGCCTTTTCAACACAGCTCAGTACAAGTGCCTGTTGCCATGGAAGA
GGCTGATGACACTGTGGCACCCAGCTCGACGTTCTGCAAGTCTACACACTGACCCCTTCTAGCCAAT
AACCGAGAGAAGCGGGCCTCGCCTTGGACGGGAAGCTCAAGCAGGAAGACACGAACCTGGCCTCTAGCA
CCCTGTTGAGGGAAGGTGCCAACCGTGAGATCCTGGGGATCATTGTTTCTCAAAAGTGAAGTGAAGCT
GGTGGTGTCTCGGGCGGCGACGTGGCCGTGGAAGTGCCTTACCCCTAATGCACCCCAAGCCCAAGAG
GAACCCCGCATCGGGAAGTTCCAGAGAACGAGACGCCAGTAGATACCAATCTCATAGAACTTGACACAA
ATGATGACGACATTGATTTGAGGACTTGTCTCGCCAGAGACTGAAAGGCATGAAGGATGACAAGGAGGA
AGAGGAGGATGGTACCGCTCTCCACAGCTCAACAACAGA

ACGCGTACGCGGCCGCTCGAGCAGAAACTCATCTCAGAAGAGGATCTGGCAGCAAATGATATCCTGGATT
ACAAGGATGACGACGATAAGGTTTAA



[View online »](#)

Protein Sequence: >RC221737 representing NM_020251
Red=Cloning site Green=Tags(s)

MGDKGTRVFKKASPNGKLTVYLGKRDFVDHIDLVPVDGVVLDPEYLKERRVYVTLTCAFYRGREDLDV
 LGLTFRKDLFVANVQSFPPAPEDKKPLTRLQERLIKKGHAYPFTEIPPNLPCSVTLQPGPDTGKAC
 GVDYEVKAFCAENLEEKIHKRNSVRLVIRKQYAPERPGPOPTAETTRQFLMSDKPLHLEASLDKEIYYH
 GEPI SVNVHVTNNTNKTVKKIKISVRQYADICLFNTAQYKCPVAMEEADDTVAPSSFTCKVYTLTPFLAN
 NREKRGLALDGKLGKHDNTLASSTLLREGANREILGII VSYKVKV KLVVSRGGDVAVELPFTLMHPKPKPE
 EPPHREVPENETPVDTNLIELDTNDDDIVFEDFARQRLKGMKDDKEEEDGTGSPQLNNR

TRTRPLEQKLISEEDLAANDILDYKDDDDKV

Chromatograms: https://cdn.origene.com/chromatograms/mk8058_a02.zip

Restriction Sites: SgfI-MluI

Cloning Scheme:



* The last codon before the Stop codon of the ORF

ACCN: NM_020251

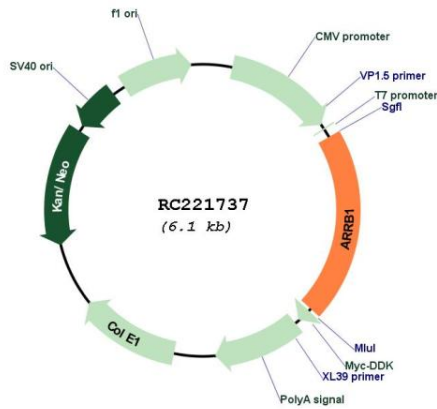
ORF Size: 1230 bp

OTI Disclaimer: Due to the inherent nature of this plasmid, standard methods to replicate additional amounts of DNA in E. coli are highly likely to result in mutations and/or rearrangements. Therefore, OriGene does not guarantee the capability to replicate this plasmid DNA. Additional amounts of DNA can be purchased from OriGene with batch-specific, full-sequence verification at a reduced cost. Please contact our customer care team at custsupport@origene.com or by calling 301.340.3188 option 3 for pricing and delivery.

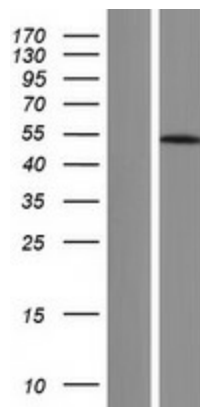
The molecular sequence of this clone aligns with the gene accession number as a point of reference only. However, individual transcript sequences of the same gene can differ through naturally occurring variations (e.g. polymorphisms), each with its own valid existence. This clone is substantially in agreement with the reference, but a complete review of all prevailing variants is recommended prior to use. [More info](#)

OTI Annotation:	This clone was engineered to express the complete ORF with an expression tag. Expression varies depending on the nature of the gene.
Components:	The ORF clone is ion-exchange column purified and shipped in a 2D barcoded Matrix tube containing 10ug of transfection-ready, dried plasmid DNA (reconstitute with 100 ul of water).
Reconstitution Method:	<ol style="list-style-type: none">1. Centrifuge at 5,000xg for 5min.2. Carefully open the tube and add 100ul of sterile water to dissolve the DNA.3. Close the tube and incubate for 10 minutes at room temperature.4. Briefly vortex the tube and then do a quick spin (less than 5000xg) to concentrate the liquid at the bottom.5. Store the suspended plasmid at -20°C. The DNA is stable for at least one year from date of shipping when stored at -20°C.
RefSeq:	NM_020251.4
RefSeq Size:	2180 bp
RefSeq ORF:	1233 bp
Locus ID:	408
UniProt ID:	P49407
Cytogenetics:	11q13.4
Protein Families:	Druggable Genome
Protein Pathways:	Chemokine signaling pathway, Endocytosis, MAPK signaling pathway
MW:	46.1 kDa
Gene Summary:	Members of arrestin/beta-arrestin protein family are thought to participate in agonist-mediated desensitization of G-protein-coupled receptors and cause specific dampening of cellular responses to stimuli such as hormones, neurotransmitters, or sensory signals. Arrestin beta 1 is a cytosolic protein and acts as a cofactor in the beta-adrenergic receptor kinase (BARK) mediated desensitization of beta-adrenergic receptors. Besides the central nervous system, it is expressed at high levels in peripheral blood leukocytes, and thus the BARK/beta-arrestin system is believed to play a major role in regulating receptor-mediated immune functions. Alternatively spliced transcripts encoding different isoforms of arrestin beta 1 have been described. [provided by RefSeq, Jan 2011]

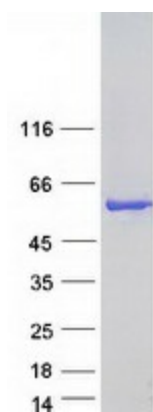
Product images:



Circular map for RC221737



Western blot validation of overexpression lysate (Cat# [LY412547]) using anti-DDK antibody (Cat# [TA50011-100]). Left: Cell lysates from untransfected HEK293T cells; Right: Cell lysates from HEK293T cells transfected with RC221737 using transfection reagent MegaTran 2.0 (Cat# [TT210002]).



Coomassie blue staining of purified ARRB1 protein (Cat# [TP321737]). The protein was produced from HEK293T cells transfected with ARRB1 cDNA clone (Cat# RC221737) using MegaTran 2.0 (Cat# [TT210002]).