

Product datasheet for RC221735

NHP2L1 (SNU13) (NM_001003796) Human Tagged ORF Clone

Product data:

Product Type: Expression Plasmids
Product Name: NHP2L1 (SNU13) (NM_001003796) Human Tagged ORF Clone
Tag: Myc-DDK
Symbol: NHP2L1
Synonyms: 15.5K; FA-1; FA1; NHP2L1; NHPX; OTK27; SNRNP15-5; SPAG12; SSFA1
Mammalian Cell Selection: Neomycin
Vector: pCMV6-Entry (PS100001)
E. coli Selection: Kanamycin (25 ug/mL)
ORF Nucleotide Sequence: >RC221735 ORF sequence
Red=Cloning site Blue=ORF Green=Tags(s)

TTTTGTAATACGACTCACTATAGGGCGCCGGAATTCGTCGACTGGATCCGGTACCGAGGAGATCTGCC
GCCCGATCGCC

ATGACTGAGGCTGATGTGAATCCAAAGGCCTATCCCCTTGCCGATGCCACCTACCAAGAAGCTACTGG
ACCTCGTTCAGCAGTCATGTAATAAGCAGCTTCGAAAGGAGCCAATGAGGCCACAAAACCTCAA
CAGGGGCATCTGAGTTCATCGTGATGGCTGCAGACGCCGAGCCACTGGAGATCATTCTGCACCTGCC
CTGCTGTGTGAAGACAAGAATGTGCCCTACGTGTTTGTGCGCTCCAAGCAGGCCCTGGGAGAGCCTGTG
GGGTCTCCAGGCCTGTCATCGCCTGTTCTGTACCATCAAAGAAGGCTCGCAGCTGAAACAGCAGATCCA
ATCCATTCAGCAGTCCATTGAAAGGCTCTTAGTC

ACGCGTACGCGGCCGCTCGAGCAGAACTCATCTCAGAAGAGGATCTGGCAGCAAATGATATCCTGGATT
ACAAGGATGACGACGATAAGGTTTAA

Protein Sequence: >RC221735 protein sequence
Red=Cloning site Green=Tags(s)
MTEADVNPKEYPLADAHLTKLLLDLVQQSCNYQLRKGANEATKTLNRGISEFIVMAADAEPLEIILHLP
LLCEDKNVPYVFRSKQALGRACGVSVPVIACSVTIKEGSQLKQIQSIQQSIERLLV

TRTRPLEQKLISEEDLAANDILDYKDDDDKV

Chromatograms: https://cdn.origene.com/chromatograms/mk6616_f01.zip

Restriction Sites: SgfI-MluI



[View online »](#)

Cloning Scheme:



ACCN: NM_001003796

ORF Size: 384 bp

OTI Disclaimer: Due to the inherent nature of this plasmid, standard methods to replicate additional amounts of DNA in E. coli are highly likely to result in mutations and/or rearrangements. Therefore, OriGene does not guarantee the capability to replicate this plasmid DNA. Additional amounts of DNA can be purchased from OriGene with batch-specific, full-sequence verification at a reduced cost. Please contact our customer care team at custsupport@origene.com or by calling 301.340.3188 option 3 for pricing and delivery.

The molecular sequence of this clone aligns with the gene accession number as a point of reference only. However, individual transcript sequences of the same gene can differ through naturally occurring variations (e.g. polymorphisms), each with its own valid existence. This clone is substantially in agreement with the reference, but a complete review of all prevailing variants is recommended prior to use. [More info](#)

OTI Annotation: This clone was engineered to express the complete ORF with an expression tag. Expression varies depending on the nature of the gene.

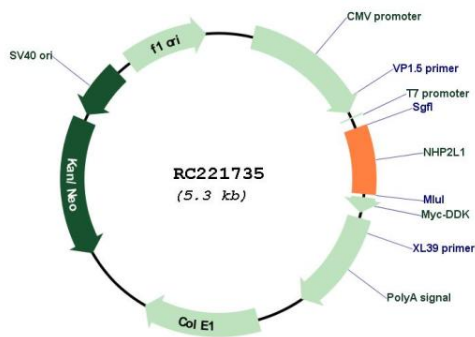
Components: The ORF clone is ion-exchange column purified and shipped in a 2D barcoded Matrix tube containing 10ug of transfection-ready, dried plasmid DNA (reconstitute with 100 ul of water).

- Reconstitution Method:
1. Centrifuge at 5,000xg for 5min.
 2. Carefully open the tube and add 100ul of sterile water to dissolve the DNA.
 3. Close the tube and incubate for 10 minutes at room temperature.
 4. Briefly vortex the tube and then do a quick spin (less than 5000xg) to concentrate the liquid at the bottom.
 5. Store the suspended plasmid at -20°C. The DNA is stable for at least one year from date of shipping when stored at -20°C.

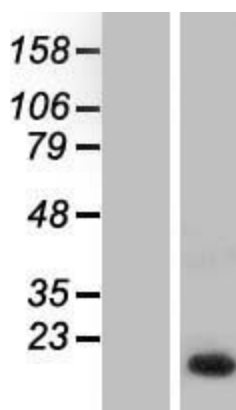
RefSeq: [NM_001003796.2](#)
 RefSeq Size: 1520 bp
 RefSeq ORF: 387 bp
 Locus ID: 4809
 UniProt ID: [P55769](#)
 Cytogenetics: 22q13.2
 Protein Pathways: Spliceosome
 MW: 14.2 kDa

Gene Summary: Originally named because of its sequence similarity to the *Saccharomyces cerevisiae* NHP2 (non-histone protein 2), this protein appears to be a highly conserved nuclear protein that is a component of the [U4/U6.U5] tri-snRNP. It binds to the 5' stem-loop of U4 snRNA. Two transcript variants encoding the same protein have been found for this gene. [provided by RefSeq, Jul 2008]

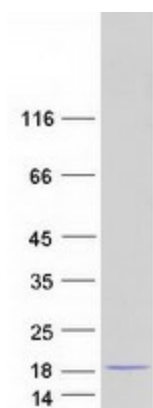
Product images:



Circular map for RC221735



Western blot validation of overexpression lysate (Cat# [LY417581]) using anti-DDK antibody (Cat# [TA50011-100]). Left: Cell lysates from untransfected HEK293T cells; Right: Cell lysates from HEK293T cells transfected with [RC224143] using transfection reagent MegaTran 2.0 (Cat# [TT210002]).



Coomassie blue staining of purified SNU13 protein (Cat# [TP321735]). The protein was produced from HEK293T cells transfected with SNU13 cDNA clone (Cat# RC221735) using MegaTran 2.0 (Cat# [TT210002]).