

Product datasheet for **RC221731**

ZAR1 (NM_175619) Human Tagged ORF Clone

Product data:

Product Type:	Expression Plasmids
Product Name:	ZAR1 (NM_175619) Human Tagged ORF Clone
Tag:	Myc-DDK
Symbol:	ZAR1
Synonyms:	Z3CXXC6
Mammalian Cell Selection:	Neomycin
Vector:	pCMV6-Entry (PS100001)
E. coli Selection:	Kanamycin (25 ug/mL)



[View online »](#)

ORF Nucleotide
Sequence:

>RC221731 representing NM_175619
Red=Cloning site Blue=ORF Green=Tags(s)

TTTTGTAATACGACTCACTATAGGGCGGCCGGAATTCGTCGACTGGATCCGGTACCGAGGAGATCTGCC
GCCGCGATCGCC

ATGGCGGCCCTGGGGACGAGGTGCTGGACGGTTACGTGTTCCCGCGTGCCCCCTGCTCGTACCGGT
ACCCATACCCCGCGCCACCAAGGGCAAGGGCGCGCGGGCGGCAGCTGGCAGCAGCGCGGACGGGGCTG
CCTCCCGCCTCCTCCCTGCTCGGCGGGCGCGGCTCGTTGTCTTCCCGGGTGCGGGCGGCTGACG
GCCGCCGAGTACTTCGACAGCTACCAGCGGGAGCGGCTCATGGCTCTCTGGCGCAGGTGGGGCCGGGTC
TCGGGCGCGCGCCGACGGGCCGCGAGCTGCGACGTGGCGGTGCAGGTGAGCCCGCAGTCCGCGCCG
GGTACAGTGTCTGCTGGGAGGGCGACGCTGCAGCGCGGGCCCGGACCCGAGTCCCGGGCCGGCCCC
GGGGCCGAGGGCACACGGGTGGCGGCTTTTCTCCAGCAGCCATCCCGTCGAGGCCTGGAGCAGGGCA
GCCCCAGAACGGCGCCCGCGGCCATGCGCTTCCCGCGACCGTCCCGTGTACTCGCCCTGGCCTT
GCGCGTCTCACGCTTCTGGAGGGGCCGGGCCCGCGCGGGCGAGCAGAGGTCCGGGGCGTCCGAC
GGAGAGAGGGGGCCGCCCGCCCGCGGGTTCAAGGCCAGAGGAGGGGGAGGTGTGGACGAAGAAGCGC
CCCGCGCGCCGAGTCCGACGACGACGGCGAGGCCAGGCCGAGTCCGAGCGAGCTGGGAGCAGCCGGC
CGACGGTCCCGAGCTGCCGCCGCGAGAGGCCAGGAGGGCGAGGCCGCTCCGCGGTCCGCGCTAAGGAGC
CCGGGGCAACCTCCGTCGGCGGGGAGGGCCGAGACGGCGGCGACGGACGGGAGGGCGGCCGTCGCGGGAG
AGGGGCCGTCGCCACGGAGCCCGGAGCTGGGCAAGGAGCGGCTGCGCTTCCAGTTCTTAGAGCAGAAATA
TGGCTATTACCACTGCAAGGACTGCAACATCCGCTGGGAGAGTGTATGTGTGGTGTACAGGGA
ACAAGGTTTACTTCAAACAGTTTTGCAGAAGTGTGAGAAGTCTATAACCTTACCGAGTGGAGGATA
TCACCTGTCAAAGTTGTAACAACAGAGATGTTCTGCCAGTAAACTTCGCCACGTGGACCCTAACG
GCCCCACCGTCAAGATTTGTGCGGTAGATGCAAAGGCAAACGCCCTGTCTGTGACAGCACTTTCAGCTTC
AAATACATCATT

ACGCGTACGCGGCCGCTCGAGCAGAACTCATCTCAGAAGAGGATCTGGCAGCAATGATATCCTGGATT
ACAAGGATGACGACGATAAGGTTTAA

Protein Sequence:

>RC221731 representing NM_175619
Red=Cloning site Green=Tags(s)

MAALGDEVLGDYVFPACPPCSYRYPYPAATKGKGAAGGSWQQRGRGCLPASSPCSAGAASLSFPGCGRLT
AAEYFDSYQRERLMALLAQVGPGLGPRARRAGSCDVAVQVSPRIDAAVQCSLGRRTLQRRARDPESPAGP
GAEGTTGGGSFSQQPSRRGLEQSPQNGAPRPMRFPRTVAVYSPLALRRLTAFLEGPGPAAGEQSRGASD
GERGPPPARLQGP EEGEVWTKKAPRRPQSDDDGEAQA AVRASWEQPADGPELPPREAQEGEAAPRSALRS
PGQPPSAGRARDGGDGREAAVAGEGSPRSPEL GKERLRFQFLEQKYGYHCKDCNIRWESAYVWCVQGT
NKVYFKQFCRTCQKSYNRYVEDITCQSKQTRCSCPVKLRHVDPKRP HRQDL CGRCKGKRLSCDSTFSF
KYII

TRTRPLEQKLISEEDLAANDILDYKDDDDKV

Chromatograms:

https://cdn.origene.com/chromatograms/mk6217_d03.zip

Restriction Sites:

SgfI-MluI

Cloning Scheme:


ACCN: NM_175619

ORF Size: 1272 bp

OTI Disclaimer: Due to the inherent nature of this plasmid, standard methods to replicate additional amounts of DNA in E. coli are highly likely to result in mutations and/or rearrangements. Therefore, OriGene does not guarantee the capability to replicate this plasmid DNA. Additional amounts of DNA can be purchased from OriGene with batch-specific, full-sequence verification at a reduced cost. Please contact our customer care team at custsupport@origene.com or by calling 301.340.3188 option 3 for pricing and delivery.

The molecular sequence of this clone aligns with the gene accession number as a point of reference only. However, individual transcript sequences of the same gene can differ through naturally occurring variations (e.g. polymorphisms), each with its own valid existence. This clone is substantially in agreement with the reference, but a complete review of all prevailing variants is recommended prior to use. [More info](#)

OTI Annotation: This clone was engineered to express the complete ORF with an expression tag. Expression varies depending on the nature of the gene.

Components: The ORF clone is ion-exchange column purified and shipped in a 2D barcoded Matrix tube containing 10ug of transfection-ready, dried plasmid DNA (reconstitute with 100 ul of water).

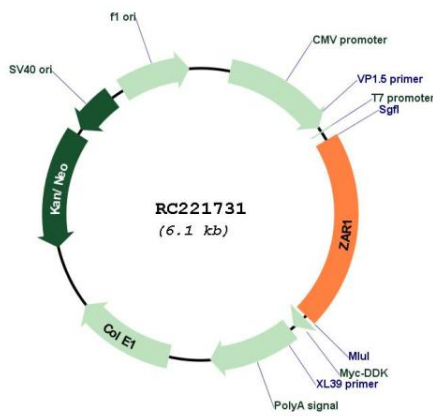
- Reconstitution Method:**
1. Centrifuge at 5,000xg for 5min.
 2. Carefully open the tube and add 100ul of sterile water to dissolve the DNA.
 3. Close the tube and incubate for 10 minutes at room temperature.
 4. Briefly vortex the tube and then do a quick spin (less than 5000xg) to concentrate the liquid at the bottom.
 5. Store the suspended plasmid at -20°C. The DNA is stable for at least one year from date of shipping when stored at -20°C.

RefSeq: [NM_175619.3](#)

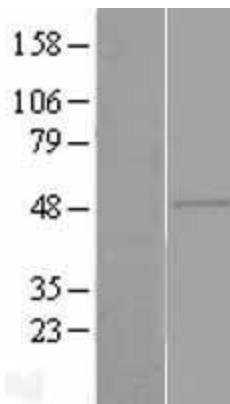
RefSeq Size: 1438 bp
 RefSeq ORF: 1275 bp
 Locus ID: 326340
 UniProt ID: [Q86SH2](#)
 Cytogenetics: 4p11
 MW: 45.7 kDa

Gene Summary: This maternal effect gene is oocyte-specific and encodes a protein that is thought to function in the initiation of embryogenesis. A similar protein in mouse is required for female fertility. [provided by RefSeq, Jul 2013]

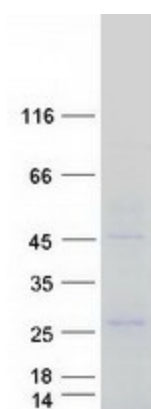
Product images:



Circular map for RC221731



Western blot validation of overexpression lysate (Cat# [LY406271]) using anti-DDK antibody (Cat# [TA50011-100]). Left: Cell lysates from untransfected HEK293T cells; Right: Cell lysates from HEK293T cells transfected with RC221731 using transfection reagent MegaTran 2.0 (Cat# [TT210002]).



Coomassie blue staining of purified ZAR1 protein (Cat# [TP321731]). The protein was produced from HEK293T cells transfected with ZAR1 cDNA clone (Cat# RC221731) using MegaTran 2.0 (Cat# [TT210002]).