

## Product datasheet for RC221726

### Small EDRK rich factor 1 (SERF1B) (NM\_022978) Human Tagged ORF Clone

#### Product data:

**Product Type:** Expression Plasmids  
**Product Name:** Small EDRK rich factor 1 (SERF1B) (NM\_022978) Human Tagged ORF Clone  
**Tag:** Myc-DDK  
**Symbol:** Small EDRK rich factor 1  
**Synonyms:** FAM2B; h4F5; H4F5C  
**Mammalian Cell Selection:** Neomycin  
**Vector:** pCMV6-Entry (PS100001)  
**E. coli Selection:** Kanamycin (25 ug/mL)  
**ORF Nucleotide Sequence:** >RC221726 ORF sequence  
Red=Cloning site Blue=ORF Green=Tags(s)

TTTTGTAATACGACTCACTATAGGGCGGCCGGAATTCGTCGACTGGATCCGGTACCGAGGAGATCTGCC  
GCCCGCATCGCC

ATGGCCCGTGAAATCAACGAGAACTTGCCCGCCAGAAAACATGAAGAAAACCCAGGAAATTAGCAAGG  
GAAAGAGGAAAGAGGATAGCTTGACTGCCTCTCAGAGAAAGCAGAGTTCTGGAGGCCAGAAATCTGAGAG  
CAAGATGTCAGCTGGGCCACACCTCCCTCTGAAGGCTCCAAGGGAGAATCCTTGCTTCTCTCCAGCT  
GCTGGTGGCTCCAGGTACTTGGCTTATGGCAGCATAACTCCTATCTCTGCCTTGTCTTTGTGGTCT  
TCTTTTCTGTCTTCTCCCTTCTTTTATGAGGACTTTTGCTGTTGGATT

ACGCGTACGCGGCCGCTCGAGCAGAACTCATCTCAGAAGAGGATCTGGCAGCAAATGATATCCTGGATT  
ACAAGGATGACGACGATAAGGTTTAA

**Protein Sequence:** >RC221726 protein sequence  
Red=Cloning site Green=Tags(s)  
MARGNQRELARQKNMKTQEISKGRKEDSLTASQRKQSSGGQKSESKMSAGPHLPLKAPRENPCFPLPA  
AGGSRYLAYGSITPISAFVVFVFFSVFFPSFYEDFCW

TRTRPLEQKLISEEDLAANDILDYKDDDDKV

**Chromatograms:** [https://cdn.origene.com/chromatograms/mk6547\\_h05.zip](https://cdn.origene.com/chromatograms/mk6547_h05.zip)

**Restriction Sites:** SgfI-MluI



[View online »](#)

**Cloning Scheme:**


**ACCN:** NM\_022978

**ORF Size:** 330 bp

**OTI Disclaimer:** The molecular sequence of this clone aligns with the gene accession number as a point of reference only. However, individual transcript sequences of the same gene can differ through naturally occurring variations (e.g. polymorphisms), each with its own valid existence. This clone is substantially in agreement with the reference, but a complete review of all prevailing variants is recommended prior to use. [More info](#)

**OTI Annotation:** This clone was engineered to express the complete ORF with an expression tag. Expression varies depending on the nature of the gene.

**Components:** The ORF clone is ion-exchange column purified and shipped in a 2D barcoded Matrix tube containing 10ug of transfection-ready, dried plasmid DNA (reconstitute with 100 ul of water).

- Reconstitution Method:**
1. Centrifuge at 5,000xg for 5min.
  2. Carefully open the tube and add 100ul of sterile water to dissolve the DNA.
  3. Close the tube and incubate for 10 minutes at room temperature.
  4. Briefly vortex the tube and then do a quick spin (less than 5000xg) to concentrate the liquid at the bottom.
  5. Store the suspended plasmid at -20°C. The DNA is stable for at least one year from date of shipping when stored at -20°C.

**RefSeq:** [NM\\_022978.3](#)

**RefSeq Size:** 1917 bp

**RefSeq ORF:** 333 bp

**Locus ID:** 728492

UniProt ID: [O75920](#)

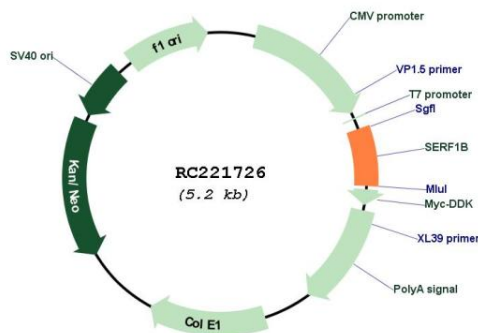
Cytogenetics: 5q13.2

Protein Families: Transmembrane

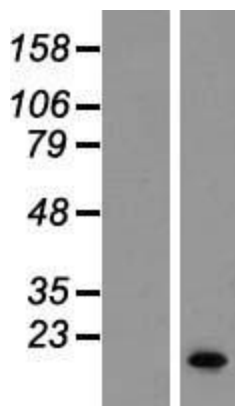
MW: 12.3 kDa

**Gene Summary:** This gene is part of a 500 kb inverted duplication on chromosome 5q13. This duplicated region contains at least four genes and repetitive elements which make it prone to rearrangements and deletions. The repetitiveness and complexity of the sequence have also caused difficulty in determining the organization of this genomic region. This gene is the centromeric copy which is identical to the telomeric copy. Alternatively spliced transcripts have been documented but it is unclear whether alternative splicing occurs for both the centromeric and telomeric copies of the gene. The gene encodes a protein of unknown function which bears low-level homology with the RNA-binding domain of matrin-cyclophilin, a protein which colocalizes with small nuclear ribonucleoproteins (snRNPs) and the SMN1 gene product. [provided by RefSeq, Jul 2008]

**Product images:**



Circular map for RC221726



Western blot validation of overexpression lysate (Cat# [LY411427]) using anti-DDK antibody (Cat# [TA50011-100]). Left: Cell lysates from untransfected HEK293T cells; Right: Cell lysates from HEK293T cells transfected with RC221726 using transfection reagent MegaTran 2.0 (Cat# [TT210002]).