

Product datasheet for **RC221721**

SPRR2E (NM_001024209) Human Tagged ORF Clone

Product data:

Product Type: Expression Plasmids

Tag: Myc-DDK

Symbol: SPRR2E

Mammalian Cell Selection: Neomycin

Vector: pCMV6-Entry (PS100001)

E. coli Selection: Kanamycin (25 ug/mL)

ORF Nucleotide Sequence: >RC221721 representing NM_001024209
Red=Cloning site Blue=ORF Green=Tags(s)

TTTTGTAATACGACTCACTATAGGGCGGCCGGAATTCGTCGACTGGATCCGGTACCGAGGAGATCTGCC
GCC**CGATCGCC**

ATGTCTTATCAACAGCAGCAGTGAAGCAGCCCTGCCAGCCACCTCCTGTGTGCCCCAGCCAAAGTGCC
CAGAGCCATGTCCACCCCGAAGTGCCTGAGCCCTGCCACCACCAAAGTGTCCACAGCCCTGCCACC
TCAGCAGTCCAGCAGAAATGTCTCCTGTGACACCTTCCCCACCTGCCAGCCAAAGTGTCCACCCAAG
AGCAAG

ACGCGTACGCGGCCGCTCGAGCAGAACTCATCTCAGAAGAGGATCTGGCAGCAAATGATATCCTGGATT
ACAAGGATGACGACGATAAGGTTTAA

Protein Sequence: >RC221721 representing NM_001024209
Red=Cloning site Green=Tags(s)

MSYQQQCKQPCQPPPVCTPKCPEPCPPKCEPCPPKCPQPCPPQQCKCPPVTPSPPCQPKCPPK
SK

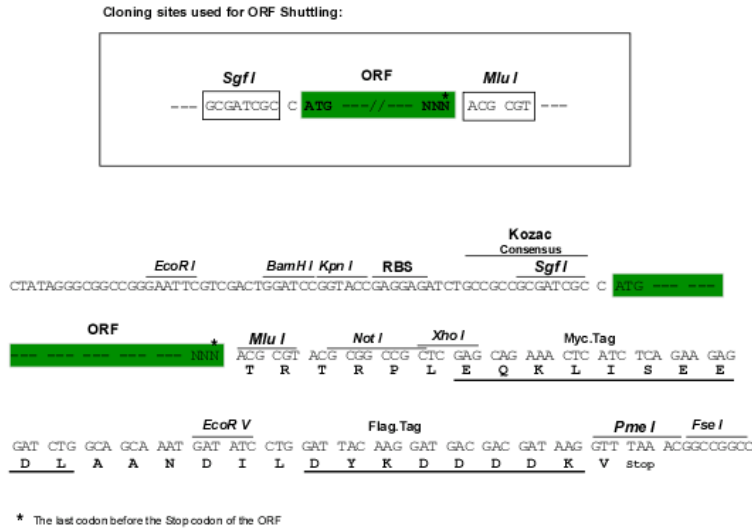
TRTRPLEQKLISEEDLAANDILDYKDDDDKV

Chromatograms: https://cdn.origene.com/chromatograms/mg2944_b07.zip

Restriction Sites: SgfI-MluI



Cloning Scheme:



ACCN: NM_001024209

ORF Size: 216 bp

OTI Disclaimer: The molecular sequence of this clone aligns with the gene accession number as a point of reference only. However, individual transcript sequences of the same gene can differ through naturally occurring variations (e.g. polymorphisms), each with its own valid existence. This clone is substantially in agreement with the reference, but a complete review of all prevailing variants is recommended prior to use. [More info](#)

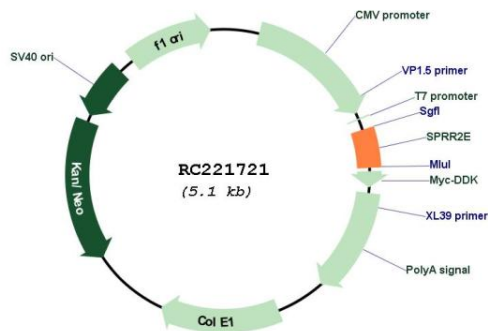
OTI Annotation: This clone was engineered to express the complete ORF with an expression tag. Expression varies depending on the nature of the gene.

Components: The ORF clone is ion-exchange column purified and shipped in a 2D barcoded Matrix tube containing 10ug of transfection-ready, dried plasmid DNA (reconstitute with 100 ul of water).

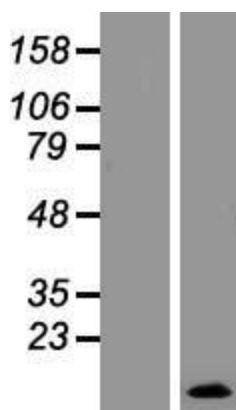
- Reconstitution Method:**
1. Centrifuge at 5,000xg for 5min.
 2. Carefully open the tube and add 100ul of sterile water to dissolve the DNA.
 3. Close the tube and incubate for 10 minutes at room temperature.
 4. Briefly vortex the tube and then do a quick spin (less than 5000xg) to concentrate the liquid at the bottom.
 5. Store the suspended plasmid at -20°C. The DNA is stable for at least one year from date of shipping when stored at -20°C.

Note:	Plasmids are not sterile. For experiments where strict sterility is required, filtration with 0.22um filter is required.
RefSeq:	NM_001024209.4
RefSeq Size:	762 bp
RefSeq ORF:	219 bp
Locus ID:	6704
UniProt ID:	P22531
Cytogenetics:	1q21.3
MW:	7.7 kDa
Gene Summary:	This gene encodes a member of a family of small proline-rich proteins clustered in the epidermal differentiation complex on chromosome 1q21. The encoded protein, along with other family members, is a component of the cornified cell envelope that forms beneath the plasma membrane in terminally differentiated stratified squamous epithelia. This envelope serves as a barrier against extracellular and environmental factors. The seven SPRR2 genes (A-G) appear to have been homogenized by gene conversion compared to others in the cluster that exhibit greater differences in protein structure. [provided by RefSeq, Feb 2014]

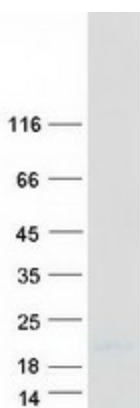
Product images:



Circular map for RC221721



Western blot validation of overexpression lysate (Cat# [LY422617]) using anti-DDK antibody (Cat# [TA50011-100]). Left: Cell lysates from un-transfected HEK293T cells; Right: Cell lysates from HEK293T cells transfected with RC221721 using transfection reagent MegaTran 2.0 (Cat# [TT210002]).



Coomassie blue staining of purified SPRR2E protein (Cat# [TP321721]). The protein was produced from HEK293T cells transfected with SPRR2E cDNA clone (Cat# RC221721) using MegaTran 2.0 (Cat# [TT210002]).