

## Product datasheet for **RC221719**

### Low density lipoprotein receptor related protein 10 (LRP10) (NM\_014045) Human Tagged ORF Clone

#### Product data:

|                                  |   |
|----------------------------------|---|
| <b>Product Type:</b>             | Expression Plasmids                                 |
| <b>Tag:</b>                      | Myc-DDK   |
| <b>Symbol:</b>                   | Low density lipoprotein receptor related protein 10 |
| <b>Synonyms:</b>                 | LRP-10; LRP9; MST087; MSTP087                       |
| <b>Mammalian Cell Selection:</b> | Neomycin  |
| <b>Vector:</b>                   | pCMV6-Entry (PS100001)                              |
| <b>E. coli Selection:</b>        | Kanamycin (25 ug/mL)                                |



ORF Nucleotide Sequence: >RC221719 ORF sequence  
Red=Cloning site Blue=ORF Green=Tags(s)

TTTTGTAATACGACTACTATAGGGCGCCGGGAATTCGTGACTGGATCCGGTACCGAGGAGATCTGCC  
GCC**CGGATCGCC**

ATGCTGTTGGCCACCCTCCTCCTCCTCCTTGGAGGCGCTGGCCCATCCAGACCGGATTATTTTC  
CAAATCATGCTTGTGAGGACCCCCAGCAGTGCTCTTAGAAGTGCAGGGCACCTTACAGAGGCCCTGGT  
CCGGGACAGCCGACCTCCCCTGCCAACTGCACCTGGCTCATCCTGGGAGCAAGGAACAGACTGTCACC  
ATCAGGTTCCAGAAGCTACACCTGGCTGTGGCTCAGAGCGCTTAAACCTACGCTCCCCTCTCCAGCCAC  
TGATCTCCCTGTGTGAGGCACCTCCAGCCCTCTGCAGCTGCCCGGGGCAACGTCACCATCACTTACAG  
CTATGCTGGGGCCAGAGCACCCATGGGCCAGGGCTTCTGCTCTCCTACAGCCAAGATTGGCTGATGTGC  
CTGCAGGAAGAGTTTCACTGCCTGAACCACCGCTGTGTATCTGCTGTCCAGCGCTGTGATGGGGTTGATG  
CCTGTGGCGATGGCTCTGATGAAGCAGGTTGCAGCTCAGACCCCTTCCCTGGCCTGACCCCAAGACCCGT  
CCCCTCCCTGCCTGCAATGTCACCTTGGAGGACTTCTATGGGGTCTTCTCCTCTCCTGGATATACACAC  
CTAGCCTCAGTCTCCACCCCCAGTCTGCCATTGGCTGCTGGACCCCATGATGGCCGGCGGCTGGCCG  
TGCGCTTACAGCCCTGGACTTGGGCTTTGGAGATGCAGTGCATGTGTATGACGGCCCTGGGCCCCCTGA  
GAGCTCCCGACTACTGCGTAGTCTCACCCACTCAGCAATGGCAAGGCTGCTACTGTGGAGACACTGTCT  
GGCCAGGCTGTTGTCTACACACAGTTGCTTGGAGCAATGGTCTGGCTTCAATGCCACCTACCATG  
TGCGGGGCTATTGCTTGCCTTGGGACAGACCCTGTGGCTTAGGCTCTGGCTGGGAGCTGGCGAAGGCC  
AGGTGAGCGCTGTACAGTGAAGCACAGCGCTGTGACGGCTCATGGGACTGTGCTGACGGCACAGATGAG  
GAGGACTGCCAGGCTGCCACCTGGACACTTCCCCTGTGGGGCTGCTGGCACCTCTGGTGCACAGCCT  
GCTACCTGCCTGCTGACCGCTGCAACTACCAGACTTCTGTGCTGATGGAGCAGATGAGAGACGCTGTCG  
GCATTGCCAGCCTGGCAATTTCCGATGCCGGGACGAGAAGTGCGTGTATGAGACGTGGGTGTGCGATGGG  
CAGCCAGACTGTGCGGACGGCAGTGTGAGTGGGACTGCTCCTATGTTCTGCCCCGAAGGTCATTACAG  
CTGCAGTCATTGGCAGCCTAGTGTGCGGCTGCTCCTGGTCTCGCCCTGGGCTGCACCTGCAAGCTCTA  
TGCCATTGCAACCCAGGAGTACAGCATCTTGGCCCCCTCTCCCGATGGAGGCTGAGATTGTGCAGCAG  
CAGGCACCCCTTCTACGGGACGCTCATTGCCAGGGTGCATCCACCTGTAGAAGACTTTCCTACAG  
AGAATCCTAATGATAAAGTCACTGCTGGGCAACCTGCGTTCTCTGCTACAGATCTTACGCCAGGATATGAC  
TCCAGGAGGTGGCCAGGTGCCCGCGTGTGACGGGGCCGCTTGTGCGACGCTGGTACGCCGTCTC  
CGCCGCTGGGGCTTGTCTCCTCGAACCAACACCCCGGCTCGGGCTCTGAGGCCAGATCCAGGTACAC  
CTTCTGCTGCTCCCTTGGAGCCCTAGATGGTGGCACAGGTCCAGCCCTGAGGGCGGGGACAGTGGGTGG  
GCAAGATGGGGAGCAGGCACCCCACTGCCATCAAGGCTCCCCTCCCCTCTGCTAGCACGCTCCAGCC  
CCCCTACTGTCCCTGAAGCCCAGGGCCACTGCCCTCACTGCCCTAGAGCCATCACTATTGTCTGGAG  
TGGTGCAGGCCCTGCGAGGCCCTGTTGCCAGCCTGGGGCCCCAGGACCAACCCGGAGCCCCCTGG  
ACCCACACAGCAGTCTGGCCCTGGAAGATGAGGACGATGTGCTACTGGTGCACCTGGCTGAGCCGGGG  
GTGTTGGTAGCTGAGGCAGAGGATGAGCCACTGCTTACC

**ACGGT**ACGCGGCCGCTCGAGCAGAACTCATCTCAGAAGAGGATCTGGCAGCAATGATATCTGGATT  
ACAAGGATGACGACGATAAGGTTTAA

**Protein Sequence:** >RC221719 protein sequence  
 Red=Cloning site Green=Tags(s)

MLLATLLLLLLGGALAHDPRIIFPNHACEDPPAVLLEVQGLQRPLVRDSRTSPANCTWLILGSKEQTVT  
 IRFQKHLHACGSERLTLRSPLQPLISLCEAPPSPLQLPGGNVTITYSYAGARAPMGQGFLLSYSQDWLMC  
 LQEEFQCLNHRCSAVQRCDGVDACDGDGSDAEGCSDPFPGLTPRPVPSLPCNVTLEDFYGVFSSPGYTH  
 LASVSHPQSCHWLLDPHDGRRLAVRF TALDLGFGDAVHVYDGPPESSRLLRSLTHFSNGKAVTVETLS  
 GQAVVSYHTVAWSNGRGNATYHVRGYCLPWDRPCGLGSLGAGEGLGERCYSEAQRCDGSWDCADGTE  
 EDCPGCPPGHFPCGAAGTSGATACYPADRCNYQTFCADGADERRCRHCQPGNFRRCRDEKCVYETWVCDG  
 QPDCADGSDWDCSYVLPRKVITAAVIGSLVCGLLLVIALGCTCKLYAIRTQEYSIFAPLSRMEAEIVQQ  
 QAPPSYQQLIAQGAIPPVEDFPTENPNDNSVLGNLRSLQLILRQDMTPGGGPGARRRQRGLMRRLVRRLL  
 RRWGLLPRNTNPARASEARSQVTPSAAPLEALDGGTGPAREGGAVGGQDGEQAPPLPIKAPLPSASTSPA  
 PTTVPEAPGPLPSLPLEPSLLSGVVQALRGRLPSLPGPPTRSPPGPHTAVLALEDEDDVLLVPLAEPG  
 VVWAEAEDEPLLT

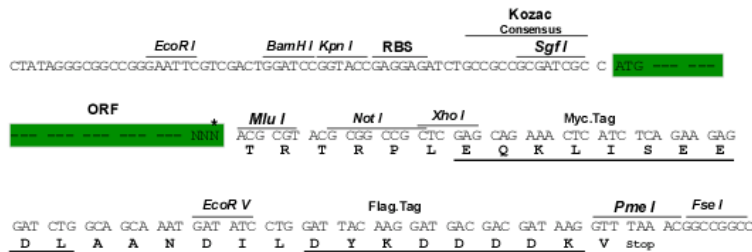
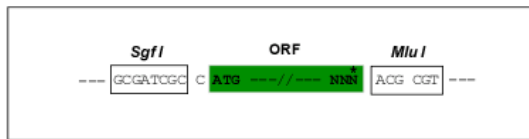
TRTRPLEQKLI SEEDLAANDILDYKDDDDKV

**Chromatograms:** [https://cdn.origene.com/chromatograms/mk6610\\_b01.zip](https://cdn.origene.com/chromatograms/mk6610_b01.zip)

**Restriction Sites:** SgfI-MluI

**Cloning Scheme:**

Cloning sites used for ORF Shuttling:



\* The last codon before the Stop codon of the ORF

**ACCN:** NM\_014045

**ORF Size:** 2139 bp

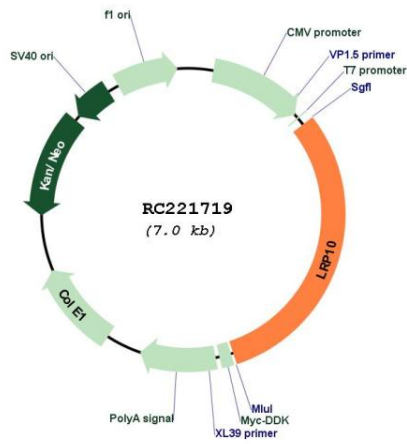
**OTI Disclaimer:** The molecular sequence of this clone aligns with the gene accession number as a point of reference only. However, individual transcript sequences of the same gene can differ through naturally occurring variations (e.g. polymorphisms), each with its own valid existence. This clone is substantially in agreement with the reference, but a complete review of all prevailing variants is recommended prior to use. [More info](#)

**OTI Annotation:** This clone was engineered to express the complete ORF with an expression tag. Expression varies depending on the nature of the gene.

---

|                               |   |
|-------------------------------|---|
| <b>Components:</b>            | The ORF clone is ion-exchange column purified and shipped in a 2D barcoded Matrix tube containing 10ug of transfection-ready, dried plasmid DNA (reconstitute with 100 ul of water).  |
| <b>Reconstitution Method:</b> | <ol style="list-style-type: none"><li>1. Centrifuge at 5,000xg for 5min.</li><li>2. Carefully open the tube and add 100ul of sterile water to dissolve the DNA.</li><li>3. Close the tube and incubate for 10 minutes at room temperature.</li><li>4. Briefly vortex the tube and then do a quick spin (less than 5000xg) to concentrate the liquid at the bottom.</li><li>5. Store the suspended plasmid at -20°C. The DNA is stable for at least one year from date of shipping when stored at -20°C.</li></ol> |
| <b>Note:</b>                  | Plasmids are not sterile. For experiments where strict sterility is required, filtration with 0.22um filter is required.  |
| <b>RefSeq:</b>                | <a href="#">NM_014045.5</a>   |
| <b>RefSeq Size:</b>           | 3252 bp   |
| <b>RefSeq ORF:</b>            | 2142 bp   |
| <b>Locus ID:</b>              | 26020   |
| <b>UniProt ID:</b>            | <a href="#">Q7Z4F1</a>  |
| <b>Cytogenetics:</b>          | 14q11.2   |
| <b>Protein Families:</b>      | Druggable Genome, Transmembrane   |
| <b>MW:</b>                    | 76.2 kDa  |
| <b>Gene Summary:</b>          | This gene encodes a low density lipoprotein receptor family protein. A similar protein in mouse is thought to play a role in the uptake of apolipoprotein E-containing lipoproteins. [provided by RefSeq, Jul 2016]   |

Product images:



Circular map for RC221719

□

Western validation with an anti-DDK antibody  
 \* L: Control HEK293 lysate R: Over-expression lysate