

## Product datasheet for RC221718

### TSPAN14 (NM\_030927) Human Tagged ORF Clone

#### Product data:

Product Type:	Expression Plasmids
Tag:	Myc-DDK
Symbol:	TSPAN14
Synonyms:	DC-TM4F2; TM4SF14; tspan-14
Mammalian Cell Selection:	Neomycin
Vector:	pCMV6-Entry (PS100001)
E. coli Selection:	Kanamycin (25 ug/mL)

**ORF Nucleotide Sequence:** >RC221718 representing NM\_030927  
Red=Cloning site Blue=ORF Green=Tags(s)

TTTTGTAATACGACTCACTATAGGGCGCCGGGAATTCGTCGACTGGATCCGGTACCGAGGAGATCTGCC  
GCCGCGATCGCC

ATGCACTATTATAGATACTCTAACGCCAAGGTCAGCTGCTGGTACAAGTACCTCCTTTTCAGCTACAACA  
TCATCTTCTGGTTGGCTGGAGTTGTCTTCTTGGAGTCGGGCTGTGGGCATGGAGCGAAAAGGGTGTGCT  
GTCCGACCTCACCAAAGTGACCCGGATGCATGGAATCGACCCTGTGGTCTGGTCTGATGGTGGGCGTG  
GTGATGTTCAACCTGGGGTTCGCCGGCTGCGTGGGGCTCTGCGGGAGAATATCTGCTTGTCAACTTTT  
TCTGTGGCACCATCGTGCATCTTCTTCTGGAGCTGGCTGTGGCCGTGCTGGCCTTCTGTTCCAGGA  
CTGGGTGAGGGACCGTTCCGGGAGTTCTTCGAGAGCAACATCAAGTCCTACCGGGACGATATCGATCTG  
CAAAACCTCATCGACTCCCTCAGAAAGCTAACCAAGTGTGTGGCGCATATGGCCCTGAAGACTGGGACC  
TCAACGTCTACTTCAATTGCAGCGGTGCCAGCTACAGCCGAGAGAAGTGCAGGGTCCCCTTCTCTGCTG  
CGTGCCAGATCCTGCGCAAAAAGTTGTGAACACACAGTGTGGATATGATGTCAGGATTCAGCTGAAGAGC  
AAGTGGGATGAGTCCATCTTACGAAAGGCTGCATCCAGGCGCTGGAAAGCTGGCTCCCGCGGAACATTT  
ACATTGTGGCTGGCGTCTTATCGCCATCTCGCTGTTGCAGATATTTGGCATCTTCTGGCAAGGACGCT  
GATCTCAGACATCGAGGCAGTGAAGCCGCGCCGTCCTTC

ACGCGTACGCGGCCGCTCGAGCAGAAACTCATCTCAGAAGAGGATCTGGCAGCAAAATGATATCCTGGATT  
ACAAGGATGACGACGATAAGGTTTAA



**Protein Sequence:** >RC221718 representing NM\_030927  
 Red=Cloning site Green=Tags(s)

MHYRYSNAKVSCWYKYLIFSYNIIIFWLAGVVFLGVGLWAWSEKGVLSDLTKVTRMHGIDPVVVLVMVGV  
 VMFTLGFAGCVGALRENICLLNFFCGTIVLIFFLELAVAVLAFLFQDWVRDRFREFFESNIKSYRDDIDL  
 QNLIDSLQKANQCCGAYGPEDWDLNVVFNCSGASYSREKCGVPFSCCVDPAPQKVVNTQCGYDVRILKLS  
 KWDESIFTKGCIQALESWLPRNIYIVAGVFAIASLLQIFGIFLARTLISDIEAVKAGRHF

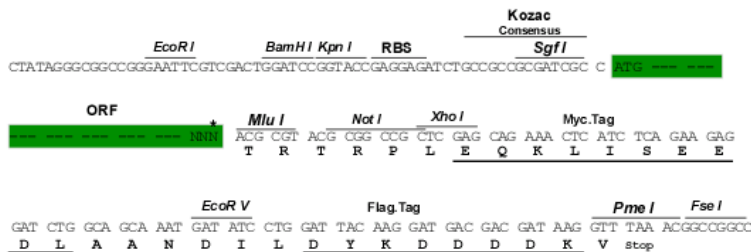
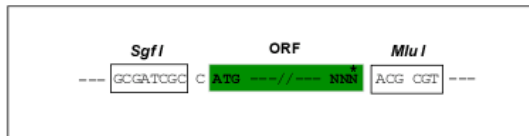
TRTRPLEQKLISEEDLAANDILDYKDDDDKV

**Chromatograms:** [https://cdn.origene.com/chromatograms/mk6492\\_d01.zip](https://cdn.origene.com/chromatograms/mk6492_d01.zip)

**Restriction Sites:** SgfI-MluI

**Cloning Scheme:**

Cloning sites used for ORF Shuttling:



\* The last codon before the Stop codon of the ORF

**ACCN:** NM\_030927

**ORF Size:** 810 bp

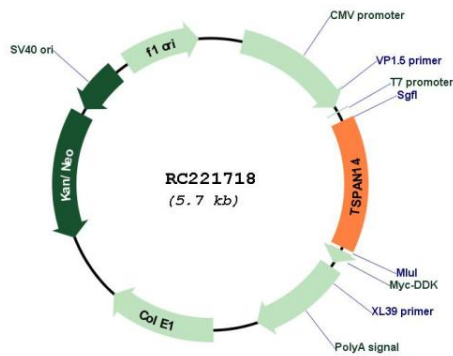
**OTI Disclaimer:** The molecular sequence of this clone aligns with the gene accession number as a point of reference only. However, individual transcript sequences of the same gene can differ through naturally occurring variations (e.g. polymorphisms), each with its own valid existence. This clone is substantially in agreement with the reference, but a complete review of all prevailing variants is recommended prior to use. [More info](#)

**OTI Annotation:** This clone was engineered to express the complete ORF with an expression tag. Expression varies depending on the nature of the gene.

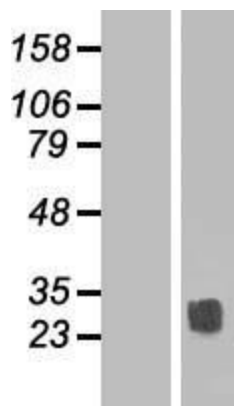
**Components:** The ORF clone is ion-exchange column purified and shipped in a 2D barcoded Matrix tube containing 10ug of transfection-ready, dried plasmid DNA (reconstitute with 100 ul of water).

<b>Reconstitution Method:</b>	<ol style="list-style-type: none"><li>1. Centrifuge at 5,000xg for 5min.</li><li>2. Carefully open the tube and add 100ul of sterile water to dissolve the DNA.</li><li>3. Close the tube and incubate for 10 minutes at room temperature.</li><li>4. Briefly vortex the tube and then do a quick spin (less than 5000xg) to concentrate the liquid at the bottom.</li><li>5. Store the suspended plasmid at -20°C. The DNA is stable for at least one year from date of shipping when stored at -20°C.</li></ol>
<b>Note:</b>	Plasmids are not sterile. For experiments where strict sterility is required, filtration with 0.22um filter is required.
<b>RefSeq:</b>	<u>NM_030927.4</u>
<b>RefSeq Size:</b>	2556 bp
<b>RefSeq ORF:</b>	813 bp
<b>Locus ID:</b>	81619
<b>UniProt ID:</b>	<u>Q8NGI1</u>
<b>Cytogenetics:</b>	10q23.1
<b>Domains:</b>	transmembrane4
<b>Protein Families:</b>	Transmembrane
<b>MW:</b>	30.5 kDa
<b>Gene Summary:</b>	Regulates maturation and trafficking of the transmembrane metalloprotease ADAM10 (PubMed:26668317, PubMed:23035126, PubMed:26686862). Negatively regulates ADAM10-mediated cleavage of GP6 (By similarity). Promotes ADAM10-mediated cleavage of CDH5 (By similarity).[UniProtKB/Swiss-Prot Function]

## Product images:



Circular map for RC221718



Western blot validation of overexpression lysate (Cat# [LY410647]) using anti-DDK antibody (Cat# [TA50011-100]). Left: Cell lysates from un-transfected HEK293T cells; Right: Cell lysates from HEK293T cells transfected with RC221718 using transfection reagent MegaTran 2.0 (Cat# [TT210002]).