

Product datasheet for **RC221712**

MGC70863 (NM_203302) Human Tagged ORF Clone

Product data:

Product Type: Expression Plasmids

Tag: Myc-DDK

Symbol: MGC70863

Synonyms: RPL23A_43_1761

Mammalian Cell Selection: Neomycin

Vector: pCMV6-Entry (PS100001)

E. coli Selection: Kanamycin (25 ug/mL)

ORF Nucleotide Sequence: >RC221712 representing NM_203302
Red=Cloning site Blue=ORF Green=Tags(s)

TTTTGTAATACGACTCACTATAGGGCGCCGGGAATTCGTGACTGGATCCGGTACCGAGGAGATCTGCC
GCC**GCGATCGCC**

ATGTCACTCACCTTCAGGCGGCCAAGACTGCGACTCCGGAGGCAGCCAGATATCCTCGGAAGAGCA
CCCCAGGAGAAACAAGCTTGGCCACTATGCTATCATCAAGTTTCCGCTGGCCACTGAGTCGGCCGTGAA
GAAGATAGAAGAAAACAACACGCTTGTGTTCACTGTGGATGTTAAAGCCAACAAGCACCAGATCAGACAG
GCTGTGAAGAAGCTCTATGACAGTGATGTGGCCAAGGTCACCACCCTGATTTGCCTGATAAGGAGAACA
AGGCATATGTTGACTTGGCTCTGATTATGATGCTTTTCGATGTTGTAACAAAATGGGATCACCTAAACT
GAGTCCAGCTGGC

ACGCGTACGCGCCGCTCGAGCAGAACTCATCTCAGAAGAGGATCTGGCAGCAAATGATATCCTGGATT
ACAAGGATGACGACGATAAGGTTTAA

Protein Sequence: >RC221712 representing NM_203302
Red=Cloning site Green=Tags(s)

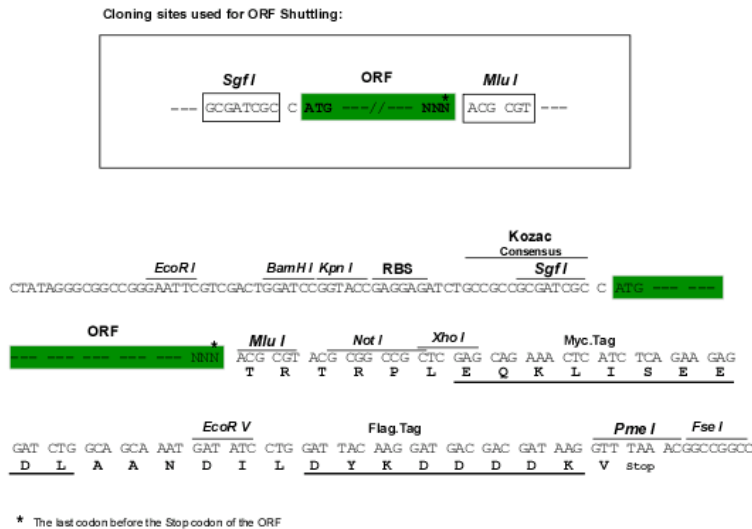
MSLTFRRPKTLRLRRQPRYPKSTPRRNKLGHYAIKFPLATESAVKKIEENNTLVFTVDVKANKHQIRQ
AVKKL YDSDVAKVTTLICPDKENKAYVRLAPDYDAFDVVTKLGSPKLSAG

TRTRPLEQKLI SEEDLAANDILDYKDDDDKV

Chromatograms: https://cdn.origene.com/chromatograms/mk6356_f12.zip

Restriction Sites: SgfI-MluI



Cloning Scheme:

ACCN:

NM_203302

ORF Size:

363 bp

OTI Disclaimer:

The molecular sequence of this clone aligns with the gene accession number as a point of reference only. However, individual transcript sequences of the same gene can differ through naturally occurring variations (e.g. polymorphisms), each with its own valid existence. This clone is substantially in agreement with the reference, but a complete review of all prevailing variants is recommended prior to use. [More info](#)

OTI Annotation:

This clone was engineered to express the complete ORF with an expression tag. Expression varies depending on the nature of the gene.

Components:

The ORF clone is ion-exchange column purified and shipped in a 2D barcoded Matrix tube containing 10ug of transfection-ready, dried plasmid DNA (reconstitute with 100 ul of water).

Reconstitution Method:

1. Centrifuge at 5,000xg for 5min.
2. Carefully open the tube and add 100ul of sterile water to dissolve the DNA.
3. Close the tube and incubate for 10 minutes at room temperature.
4. Briefly vortex the tube and then do a quick spin (less than 5000xg) to concentrate the liquid at the bottom.
5. Store the suspended plasmid at -20°C. The DNA is stable for at least one year from date of shipping when stored at -20°C.

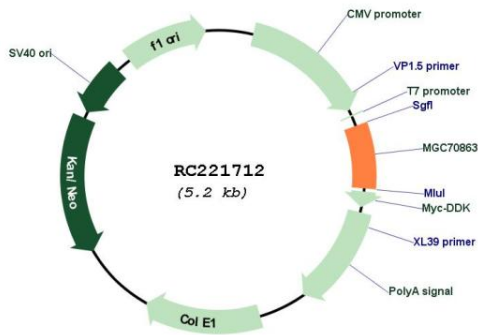
Note:

Plasmids are not sterile. For experiments where strict sterility is required, filtration with 0.22um filter is required.

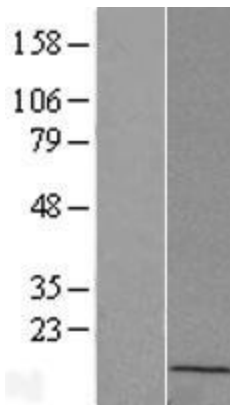
RefSeq:
[NM_203302.2](#), [NP_976047.1](#)

| | |
|---------------|----------|
| RefSeq Size: | 1249 bp |
| RefSeq ORF: | 365 bp |
| Locus ID: | 284942 |
| Cytogenetics: | 22q13.33 |
| MW: | 13.7 kDa |

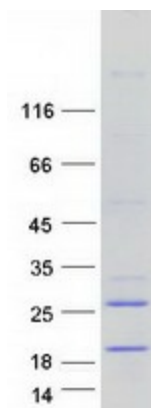
Product images:



Circular map for RC221712



Western blot validation of overexpression lysate (Cat# [LY404385]) using anti-DDK antibody (Cat# [TA50011-100]). Left: Cell lysates from un-transfected HEK293T cells; Right: Cell lysates from HEK293T cells transfected with RC221712 using transfection reagent MegaTran 2.0 (Cat# [TT210002]).



Coomassie blue staining of purified MGC70863 protein (Cat# [TP321712]). The protein was produced from HEK293T cells transfected with MGC70863 cDNA clone (Cat# RC221712) using MegaTran 2.0 (Cat# [TT210002]).