

Product datasheet for **RC221708**

DRP1 (DNM1L) (NM_012062) Human Tagged ORF Clone

Product data:

Product Type:	Expression Plasmids
Product Name:	DRP1 (DNM1L) (NM_012062) Human Tagged ORF Clone
Tag:	Myc-DDK
Symbol:	DRP1
Synonyms:	DLP1; DRP1; DVLP; DYMPLE; EMPF; EMPF1; HDYNIV; OPA5
Mammalian Cell Selection:	Neomycin
Vector:	pCMV6-Entry (PS100001)
E. coli Selection:	Kanamycin (25 ug/mL)



[View online »](#)

ORF Nucleotide Sequence:

>RC221708 representing NM_012062
 Red=Cloning site Blue=ORF Green=Tags(s)

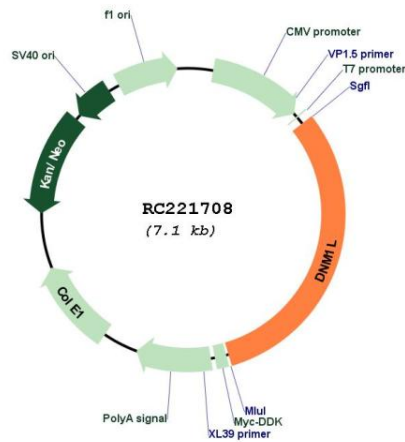
TTTTGTAATACGACTCACTATAGGGCGGCCGGAATTCGTCGACTGGATCCGGTACCGAGGAGATCTGCC
 GCC**CGGATCGCC**

ATGGAGGCGCTAATTCCTGTCATAAACAAGCTCCAGGACGTCTTCAACACGGTGGCGCCGACATCATCC
 AGCTGCCTCAAATCGTCGTAGTGGGAACGCAGAGCAGCGAAAGAGCTCAGTGCTAGAAAGCCTGGTGGG
 GAGGGACCTGTTCCAGAGGTACTGGAATTGTACCCGAGACCTCTCATTCTGCAACTGGTCCATGTT
 TCACAAGAAGATAAACGAAAAACAACAGGAGAAGAAAAATGGGGTGAAGCAGAAGAATGGGGTAAATTTT
 TTCACACCAAAAAAAGCTTTACACGGATTTTGATGAAATTCGACAAGAAATGAAAATGAAACAGAAAAG
 AATTTTCAGGAAATAATAAGGGAGTAAGCCCTGAACCAATTCATCTTAAGATTTTTTACCCCAACGTTGTC
 AATTTGACACTTGTGGATTTGCCAGGAATGACCAAGGTGCCTGTAGGTGATCAACCTAAGGATATTGAGC
 TTCAAATCAGAGAGCTCATTCTCGGTTTCATCAGTAATCCTAATCCATTATCCTCGCTGCTACTGCTGC
 TAATACAGATATGGCAACATCAGAGGCACCTAAAATTTCAAGAGAGGTAGATCCAGATGGTGCAGAACCC
 CTAGCTGTAATCACTAACTTGATCTCATGGATGCGGGTACTGATGCCATGGATGTATTGATGGGAAGGG
 TTATTCAGTCAAACCTTGAATAATTGGAGTAGTTAACAGGAGCCAGCTAGATATTAACAACAAGAGAG
 TGTAAGTATTCAATCCGTGATGAGTATGCTTTTCTTCAAAGAAATATCCATCTCTGGCCAATAGAAAAT
 GGAACAAAGTATCTTGCTAGGACTCTAACAGGTTACTGATGCATCACATCAGAGATTGTTTACCAGAGT
 TGAAAACAAGAATAAATGTTCTAGCTGCTCAGTATCAGTCTCTTCAAATAGCTACGGTGAACCCGTTGGA
 TGATAAAAGTGTACTTTACTCCAATTATTACCAAATTTGCCACAGAATATTGTAACACTATTGAAGGA
 ACTGCAAAATATATTGAACTTCGGAGCTATGCGGTGGTGTAGAATTTGTTATATTTTCCATGAGACTT
 TTGGGCGAACCTTAGAATCTGTTGATCCACTTGGTGGCCTTAACACTATTGACATTTTGGTCCATTAG
 AAATGCTACTGGTCCTCGTCTGCTTTATTTGTGCCTGAGGTTTCATTTGAGTTACTGGTGAAGCGGCAA
 ATCAAACGCTAGAAAGAGCCAGCCTCCGCTGTGTGGAACCTGGTTCATGAGGAAATGCAAAGGATCATTC
 AGCACTGTAGCAATTACAGTACACAGGAATTGTTACGATTTCTAACTTCATGATGCCATAGTTGAAGT
 GGTGACTTGTCTTCTTCTGAAAAGGTTGCCTGTTACAAATGAAATGGTCCATAACTTAGTGGCAATTGAA
 CTGGCTTATATCAACACAAAACATCCAGACTTTGCTGATGCTTGTGGGCTAATGAACAATAATATAGAGG
 AACAAAGGAGAAACAGGCTAGCCAGAGAATTACCTTCAGCTGTATCACGAGACAAGTCTTCTAAAGTTCC
 AAGTGCTTTGGCACCTGCCTCCCAGGAGCCCTCCCCGCTGCTTCTGCTGAGGCTGATGGCAAGTTAATT
 CAGGACAGCAGAAGAGAACTAAAAATGTTGCATCTGGAGGTGGTGGGGTTGGAGATGGTGTCAAGAAC
 CAACCACAGGCAACTGGAGAGGAATGCTGAAAACCTCAAAGCTGAAGAGTTATTAGCAGAAGAAAATC
 AAAACCCATTCCAATTATGCCAGCCAGTCCACAAAAGGTCATGCCGTGAACCTGTAGATGTGCCAGTT
 CCTGTTGCACGAAAACATCTGCTCGGGAACAGCGAGATTGTGAGGTTATTGAACGACTCATTAAATCAT
 ATTTTCTCATTGTGAGAAAGAATATTCAAGACAGTGTGCCAAAGGCAGTAATGCATTTTTTGGTTAATCA
 TGTGAAAGACACTCTTACAGGTGAGCTAGTAGGCCAGCTGTATAAATCATCCTTATTGGATGATCTTCTG
 ACAGAACTGAGGACATGGCACAGCGCAGGAAAGAAGCAGCTGATATGCTAAAGGCATTACAAGGAGCCA
 GTCAAATTATTGCTGAAATCCGGGAGACTCATCTTTGG

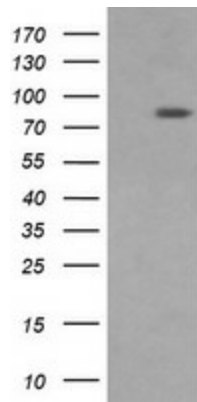
ACGCGTACGCGGCCGCTCGAGCAGAACTCATCTCAGAAGAGGATCTGGCAGCAAATGATATCCTGGATT
 ACAAGGATGACGACGATAAGGTTTAA

Components:	The ORF clone is ion-exchange column purified and shipped in a 2D barcoded Matrix tube containing 10ug of transfection-ready, dried plasmid DNA (reconstitute with 100 ul of water).
Reconstitution Method:	<ol style="list-style-type: none">1. Centrifuge at 5,000xg for 5min.2. Carefully open the tube and add 100ul of sterile water to dissolve the DNA.3. Close the tube and incubate for 10 minutes at room temperature.4. Briefly vortex the tube and then do a quick spin (less than 5000xg) to concentrate the liquid at the bottom.5. Store the suspended plasmid at -20°C. The DNA is stable for at least one year from date of shipping when stored at -20°C.
Note:	Plasmids are not sterile. For experiments where strict sterility is required, filtration with 0.22um filter is required.
RefSeq:	NM_012062.5
RefSeq Size:	3293 bp
RefSeq ORF:	2211 bp
Locus ID:	10059
UniProt ID:	O00429
Cytogenetics:	12p11.21
Protein Pathways:	Endocytosis, Fc gamma R-mediated phagocytosis
MW:	81.7 kDa
Gene Summary:	This gene encodes a member of the dynamin superfamily of GTPases. The encoded protein mediates mitochondrial and peroxisomal division, and is involved in developmentally regulated apoptosis and programmed necrosis. Dysfunction of this gene is implicated in several neurological disorders, including Alzheimer's disease. Mutations in this gene are associated with the autosomal dominant disorder, encephalopathy, lethal, due to defective mitochondrial and peroxisomal fission (EMPF). Alternative splicing results in multiple transcript variants encoding different isoforms. [provided by RefSeq, Jun 2013]

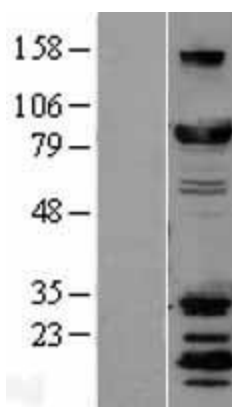
Product images:



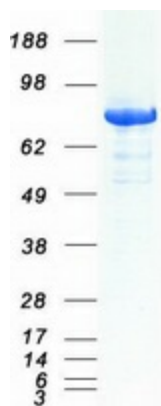
Circular map for RC221708



HEK293T cells were transfected with the pCMV6-ENTRY control (Cat# [PS100001], Left lane) or pCMV6-ENTRY DNM1L (Cat# RC221708, Right lane) cDNA for 48 hrs and lysed. Equivalent amounts of cell lysates (5 ug per lane) were separated by SDS-PAGE and immunoblotted with anti-DNM1L (Cat# [TA506153]). Positive lysates [LY402138] (100ug) and [LC402138] (20ug) can be purchased separately from OriGene.



Western blot validation of overexpression lysate (Cat# [LY402138]) using anti-DDK antibody (Cat# [TA50011-100]). Left: Cell lysates from untransfected HEK293T cells; Right: Cell lysates from HEK293T cells transfected with RC221708 using transfection reagent MegaTran 2.0 (Cat# [TT210002]).



Coomassie blue staining of purified DNM1L protein (Cat# [TP321708]). The protein was produced from HEK293T cells transfected with DNM1L cDNA clone (Cat# RC221708) using MegaTran 2.0 (Cat# [TT210002]).