

## Product datasheet for **RC221707**

### **PCDHA11 (NM\_018902) Human Tagged ORF Clone**

#### **Product data:**

<b>Product Type:</b>	Expression Plasmids
<b>Tag:</b>	Myc-DDK
<b>Symbol:</b>	PCDHA11
<b>Synonyms:</b>	CNR7; CNRN7; CNRS7; CRNR7; PCDH-ALPHA11
<b>Mammalian Cell Selection:</b>	Neomycin
<b>Vector:</b>	pCMV6-Entry (PS100001)
<b>E. coli Selection:</b>	Kanamycin (25 ug/mL)



[View online »](#)

ORF Nucleotide Sequence: >RC221707 representing NM\_018902  
Red=Cloning site Blue=ORF Green=Tags(s)

TTTTGTAATACGACTCACTATAGGGCGCCGGGAATTCGTGCGACTGGATCCGGTACCGAGGAGATCTGCC  
GCCGGATCGCC

ATGTTTGGTTTTTCAGAGAAGGGGATTGGGCACCCACGACTACAGCTCTGGCTTCTCCTCCTCGAATTCT  
GGGAGGTGGGGAGCGGCCAGCTCCACTACTCCGTCTCGGAGGAGGCCAAACACGGCACCTTCGTGGGCCG  
CATCGCGCAGGACCTGGGGCTGGAGCTGGCGGAGCTGGTGCAGCGCCTGTTCCGGGTGGCGTCCAAAACA  
CATGGGACCTTCTGGAGGTAATCTGCAGAAATGGCATTGTTGTTGTAATTCTCGGATCGACCGCGAGG  
AGCTGTGGCGGACAGCGCGGAGTGCAGCATCCACCTGGAGGTGATCGTGGACAGGCCGCTGCAGGTTTTT  
CCATGTGAACGTGGAGGTGAAGGACATTAACGACAACCCGCGGTTCCTCGCTCAGAGAACAAGGCTG  
CTGATTGCGGAATCTAAGCAATCGGACTCGCGTTTTTCCACTAGAGGGAGCTTCTGATGCTGACATTGAAG  
AGAATGCTCTATTGACCTACAGGCTAAGTAAAAATGAGTATTTTTCTTTAGATTACCAACAATGGTAA  
GCAGATAAAAGACTGTCACTTATTTAAAGAAGTCTCTGGATAGAGAGAAAACCCGGAACCTAATTTG  
CTGCTAACAGCTACAGACGGGGAAAACAGAGCTTACTGGCACCGTTCGGCTGTTAGTCCAAGTCTTGG  
ATGTCAACGACAATGATCCAGAGTTTGATAAATCAGAATATAAGGTGAGCCTTATGGAAAATGCTGCTAA  
AGAACTCTTGCTCAAACCTAAACGCCACAGACCGAGACGAAGGAGTCAATGGAGAGGTAACATACTCC  
TAAATGTCAATTAAGCCCAATGGAAGACACTTATTTACACTAGATCAAATAATGGAGAAGTGAGGGTCA  
ATGGAACTTTAGATTATGAAGAAAACAAGTTTTATAAAATTGAAGTACAGGCTACAGATAAGGGGACTCC  
CCCAATGGCAGGTCACTGTACAGTCTGGGTGGAATCTTGGACACCAACGATAACTCTCCTGAAGTCGCC  
GTGACTTCTTGTCCCTCCAGTACGAGAGGACGCTCAGCCAGCACGGTCAATGCCCTGATCAGCGTGT  
CTGACCGTGACTCAGGTGTCAACGGACAGGTGACCTGCTCGCTGACGCCACCGTTCCTTCAAGCTGGT  
GTCCACCTTCAAGAATTACTACTCGTTGGTGTGCTGGACAGCGCCTGGACCGCAGAAAGTGTGGGCTAT  
GAACTGGTGGTACTGCGCGGATGGGGTTCGCCTTCTCTGTGGGCCACGGCCAGGGTATCCGTGGAGG  
TGGCCGACGTGAACGACAATGCGCCTGCGTTCGCACAGCCGAGTACACCGTGTTCGTGAAGGAGAACAA  
CCCACAGGCTGCCACATCTTACAGTGTGGCGCGGACGCGGACGCGCAGGAGAACGCGCTGGTGTCC  
TACTCGCTGGTGGAGCGCGGTTGGGCGACCGCGCTGTGCGAGCTACGTGTGCGGTGACCGGAGAGCG  
GCAAGGTGTACGCGCTGCAGCGTTGGACCACGAGGAGTGGAGTGTACAGTTCAGGTGAGCGCGCG  
CGATGCGGGCGTCCGCTCTGAGCAGCAACGTGACGCTGCAGGTGTTGCTGCTGGACGAGAACGACAAC  
GCGCCGCGACTGCTGGCGACTCAGGCTGGCAGCGCGGAGGCGCAGTTAAACAGCTAGTACCGCGTCCG  
TGGGTGCGGGCCACGTGGTGGCGAAGGTGCGCGCAGTGGATGCGGACTCAGGCTACAACCGCTGGCTTTC  
ATATGAATTGCAGCCGGCGGGCGGGCTCGCGCATCCCGTTCGCGGTGGGGTGTACACGGGCGAGATA  
AGCACAAACGCGTCCCTGGACGAGGCGAGCTCGCCGCGCCACCGACTTCTAGTACTGGTGAAGGATCAGC  
GTGAGCCGCGCTGACGGCCACGGCCACCGTGGTGTGCTGGTGGAGAGCGGACAGGCCAAAGGC  
CTCTTCCCGGACTTTGGCGGGCGCCGAGCCAGAGGCTGCGCTGGTGGATGTCAACGTGTACCTGATC  
ATCGCCATCTGCGTGGTGTCCAGCCTCCTGGTACTCACGCTGCTGTATACGGCGCTGTTGGTGGTCCG  
CAACGCCACTGAGGGCGCTGCGCGCCGGGAAGCCACGCTGGTGTGCTCCGCGCGGTGGGAGCTG  
GTCATACTCGCAGCAGAGGCGGAGGGTGTGCTCTGAGGAGGGCCACCTAAGACGGACCTCATGGCC  
TTCAGCCCCAGTCTTCTTAGGTCTGAATAAAGAGGAGGAAGGGGAAAGACAGGAGCCAGGGTCAAATC  
ACCCCGGACAGCCACGACAGCCAAACCTGACTGGCGTTACTCTGCTCCCTGAGAGCAGGCATGCACAG  
CTCTGTGCACCTAGAGGAGGCTGGCATTCTACGGGCTGGTCCAGGAGGGCTGATCAGCAGTGGCCAACA  
GATCCAGTGCACACCAGAACCAGAGGAGGAGAAGTGTCCCCTCCAGTCCGTCGGTGGGTTCAACAGCA  
ACAGCTGGACCTTTAAATACGGACCAAGGCAACCCAAACAATCCGGTCCCGGTGAGTTGCCCGACAAATT  
CATTATCCCAGGATCTCTGCAATCATCTCCATCCGGCAGGAGCCTACTAACAGCCAAATTGACAAAAAGT  
GACTTCATAACCTTCGGCAAAAAGGAGGAGACCAAGAAAAAGAAGAAAAAGAAGGGTAAACAAGACCC  
AGGAGAAAAAGAAAAGGGAACAGCAGACTGACAACAGTACCAG

AGCGGACCGACGCGTACGCGCGGCTCGAGCAGAAAACCTATCTCAGAAGAGGATCTGGCAGCAAATGATATCC  
TGGATTACAAGGATGACGACGATAAGGTTTAA

**Protein Sequence:** >RC221707 representing NM\_018902  
 Red=Cloning site Green=Tags(s)

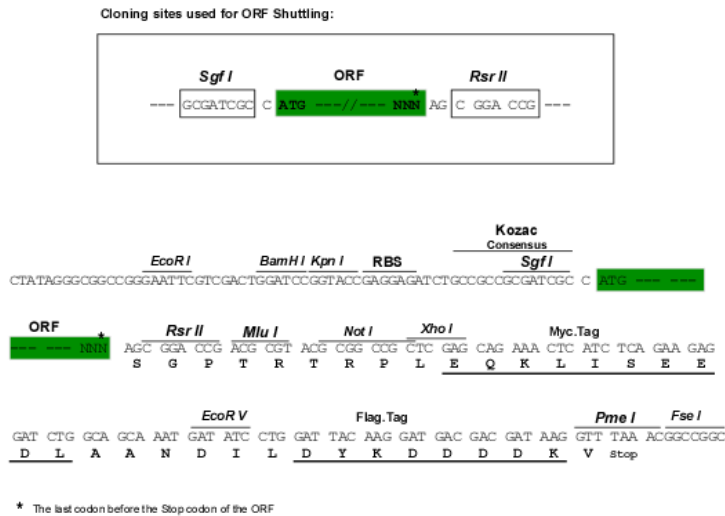
MFGFQRRRLGTPRLQLWLLLLLFEWVGSGQLHYSVSEEAKHGTFVGRIAQDLGLELAELVQRLFRVASKT  
 HGDLLLEVNQNGILFVNSRIDREELCGQSAECSIHLEVIIVDRPLQVFHVNVVEKDINDNPPVFSLREQKL  
 LIAESKQSDSRFPLEGASDADIEENALLTYRLSKNEYFLDSPTNGKQIKRSLILKSLDREKTPELNL  
 LLTATDGGKPELTGTVRLLVQVLDVNDNDFEFDKSEYKVSLENAKETLVKLKLNATDRDEGVNGEVTYS  
 LMSIKPNGRHLFTLDQNNGEVRVNGTLDYEENKFYKIEVQATDKGTPPMAGHCTVWVEILDNDNSPEVA  
 VTSLSLPVREDAQPSTVIALISVSDRDSGVNGQVTCSLTPHVPFKLVSTFKNYSYSLVDSALDRENVWAY  
 ELVVATARDDGGSPSLWATARVSVVEADVNDNAPAFAPQEYTVFVKENPPGCHIFTVSARDADAQENALVS  
 YSLVERRLDGRALSSYVSVHAEVSGKVVYALQPLDHEEELLEQQVVSARDAGVPPLSSNVTLQVFLVDENDN  
 APALLATQAGSAGGAVNKLVPRSVGAGHVVAKVRAVDADSGYNWLSYELQPAAGGSRI PFRVGLYTG  
 EITSTRALDEADSPRHRLLVKDHGEPALTATATVLSLVESGQAPKASSRTLAGAASPEALVDVNVYLI  
 IAICVVSLLVLTLLLYTALWWSATPTEGACAPGKPTLVCSRAVGSWSYSQRRQRVCSEEGPPKTDLMA  
 FSPSLPLGLNKEEGERQEPGSNHPGQPRQPNPDWRYASLRAGMHSSVHLEEAGILRAGPGPDQWPT  
 VSSATPEPEAGEVSPVAGVNSNSWTFKYGPGNPKQSGPGELPDKFIIPGSPAIISIRQEPTNSQIDKS  
 DFITFGKKEETKKKKKKGNKTQEKKEKGNSTTDNSDQ

SGPTRRRLEQKLISEEDLAANDILDYKDDDDKV

**Chromatograms:** [https://cdn.origene.com/chromatograms/mk8116\\_e02.zip](https://cdn.origene.com/chromatograms/mk8116_e02.zip)

**Restriction Sites:** SgfI-RsrII

**Cloning Scheme:**



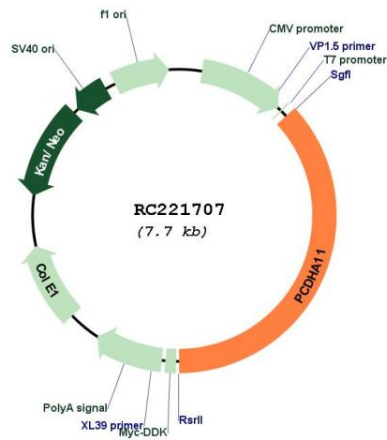
**ACCN:** NM\_018902

<b>ORF Size:</b>	2847 bp
<b>OTI Disclaimer:</b>	The molecular sequence of this clone aligns with the gene accession number as a point of reference only. However, individual transcript sequences of the same gene can differ through naturally occurring variations (e.g. polymorphisms), each with its own valid existence. This clone is substantially in agreement with the reference, but a complete review of all prevailing variants is recommended prior to use. <a href="#">More info</a>
<b>OTI Annotation:</b>	This clone was engineered to express the complete ORF with an expression tag. Expression varies depending on the nature of the gene.
<b>Components:</b>	The ORF clone is ion-exchange column purified and shipped in a 2D barcoded Matrix tube containing 10ug of transfection-ready, dried plasmid DNA (reconstitute with 100 ul of water).
<b>Reconstitution Method:</b>	<ol style="list-style-type: none"><li>1. Centrifuge at 5,000xg for 5min.</li><li>2. Carefully open the tube and add 100ul of sterile water to dissolve the DNA.</li><li>3. Close the tube and incubate for 10 minutes at room temperature.</li><li>4. Briefly vortex the tube and then do a quick spin (less than 5000xg) to concentrate the liquid at the bottom.</li><li>5. Store the suspended plasmid at -20°C. The DNA is stable for at least one year from date of shipping when stored at -20°C.</li></ol>
<b>Note:</b>	Plasmids are not sterile. For experiments where strict sterility is required, filtration with 0.22um filter is required.
<b>RefSeq:</b>	<a href="#">NM_018902.5</a>
<b>RefSeq Size:</b>	6115 bp
<b>RefSeq ORF:</b>	2850 bp
<b>Locus ID:</b>	56138
<b>UniProt ID:</b>	<a href="#">Q9Y5I1</a>
<b>Cytogenetics:</b>	5q31.3
<b>Domains:</b>	CA
<b>Protein Families:</b>	Transmembrane
<b>MW:</b>	99.9 kDa

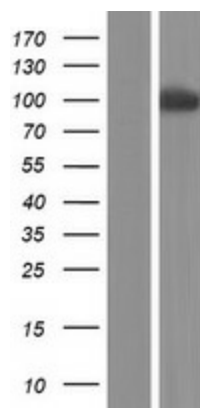
**Gene Summary:**

This gene is a member of the protocadherin alpha gene cluster, one of three related gene clusters tandemly linked on chromosome five that demonstrate an unusual genomic organization similar to that of B-cell and T-cell receptor gene clusters. The alpha gene cluster is composed of 15 cadherin superfamily genes related to the mouse CNR genes and consists of 13 highly similar and 2 more distantly related coding sequences. The tandem array of 15 N-terminal exons, or variable exons, are followed by downstream C-terminal exons, or constant exons, which are shared by all genes in the cluster. The large, uninterrupted N-terminal exons each encode six cadherin ectodomains while the C-terminal exons encode the cytoplasmic domain. These neural cadherin-like cell adhesion proteins are integral plasma membrane proteins that most likely play a critical role in the establishment and function of specific cell-cell connections in the brain. Alternative splicing has been observed and additional variants have been suggested but their full-length nature has yet to be determined. [provided by RefSeq, Jul 2008]

**Product images:**



Circular map for RC221707



Western blot validation of overexpression lysate (Cat# [LY412914]) using anti-DDK antibody (Cat# [TA50011-100]). Left: Cell lysates from un-transfected HEK293T cells; Right: Cell lysates from HEK293T cells transfected with RC221707 using transfection reagent MegaTran 2.0 (Cat# [TT210002]).