

Product datasheet for **RC221706**

NEDD4 (NM_006154) Human Tagged ORF Clone

Product data:

Product Type:	Expression Plasmids
Product Name:	NEDD4 (NM_006154) Human Tagged ORF Clone
Tag:	Myc-DDK
Symbol:	NEDD4
Synonyms:	NEDD4-1; RPF1
Vector:	pCMV6-Entry (PS100001)
E. coli Selection:	Kanamycin (25 ug/mL)
Cell Selection:	Neomycin



[View online »](#)

ORF Nucleotide Sequence:

>RC221706 representing NM_006154
 Red=Cloning site Blue=ORF Green=Tags(s)

TTTTGTAATACGACTCACTATAGGGCGGCCGGAATTCGTGACTGGATCCGGTACCGAGGAGATCTGCC
 GCC**CGCATCGCC**

ATGGCAACTTGC CGGTGGAGGTGTTCCGGCTCCTGGAGGACGAGAAAATTCACGAATTGTGAGAGTAA
 GAGTTATAGCCGAATAGGCCTTGCCAAGAAGGATATATTGGGAGCTAGTGATCCTTACGTGAGAGTGAC
 GTTATATGACCCAATGAATGGAGTTCCTACAAGTGTGCAAAACAAAAACCATTAAAAAGAGTTTGAATCCA
 AAGTGGAAATGAAGAAATATTATTCAGAGTTCATCCTCAGCAGCACCGGCTTCTTTTTGAAGTGTGGACG
 AAAACCGATTGACAAGAGATGATTTCTAGGTCAAGTGGATGTTCCACTTTATCCATTACCGACAGAAAA
 TCCAAGATTGGAGAGACCATATACATTTAAGGATTTTGTCTTCATCCAAGAAGTCACAAATCAAGAGTT
 AAAGTTATCTGAGACTAAAAATGACTTATTTACCTAAAACAGTGGCTCAGAAGATGATAATGCAGAAC
 AGGCTGAGGAATTAGAGCCTGGCTGGGTGTTTTGGACCAACCAGATGCTGCTTGCCATTTGCAGCAACA
 ACAAGAACCTTCTCTACCTCCAGGGTGGGAAGAGAGGCAGGATATCCTTGGAAAGACCTATTATGTA
 AACCATGAATCTAGAAGAACACAGTGGAAAAGACCAACCCCTCAGGACAACCTAACAGATGCTGAGAATG
 GCAACATTCAACTGCAAGCACAACGTGCATTTACCACCAGGCGGCAGATATCCGAGGAAACAGAAAGTGT
 TGACAACCAAGAGTCTTCCGAGAAGTGGGAAATTAAGAGAAGATGAAGCCACCATGTATAGCAGCCAG
 GCCTTCCCATCACCTCCACCGTCAAGTAACTTGGATGTTCCAACCTCATCTTGAGAAGAATTGAATGCCA
 GACTCACCATTTTTGAAATTCAGCCGTGAGCCAGCCAGCATCGAGCTCAAATCATTCCAGCAGAAGAGG
 CAGCTTACAAGCCTACTTTTGGAGAACACCTACACTTCTGTGCTTTTGCCTACTTCATCTGGATTA
 CCACCAGTTGGGAAGAAAAACAAGATGAAAGAGGAAGATCATATTATGTAGATCACAATCCAGAACGA
 CTACTTGGACAAAGCCCACTGTACAGGCCACAGTGGAGACCAGTCAGCTGACCTCAAGCCAGAGTTCTGC
 AGGCCCTCAATCACAAGCCTCCACCAGTGATTCAGGCCAGCAGGTGACCCAGCCATCTGAAATTTAGCAAA
 GGATTCCTTCTAAAGGCTGGGAAGTCCGGCATGCACCAATGGGAGGCCTTTCTTTATTGACCACAACA
 CTAACCAACCCACCTGGGAAGATCCAAGATTGAAAATTCAGCCCATCTGAGAGGAAAGACATCACTTGA
 TACTTCCAATGATCTAGGGCCTTACCTCCAGGATGGGAAGAGAGAACTCACACAGATGGAAGAATCTTC
 TACATAAATCACAATATAAAAAGAACACAATGGGAAGATCCTCGTTGGAGAATGTAGCAATAACTGGAC
 CAGCAGTCCCTACTCCAGGATTACAAAAGAAAGTATGAGTTCTTCCGAAGAAAGTTGAAGAAGCAGAA
 TGACATTCAAAACAAATTTGAAATGAAACTTCGCCGAGCAACTGTTCTTGAAGACTTTACCGGAGAATT
 ATGGGTGTCAAGAGAGCAGACTTCTGAAGGCTCGACTGTGGATTGAGTTTGTGATGTTGAAAGGGATTGG
 ATTATGGAGGAGTTGCCAGAGAATGGTTCTTCTGATCTCAAAGGAAATGTTAAACCTTATTATGGGTT
 GTTTGAATATTCTGCTACGGACAATTATACCCTACAGATAAATCCAAACTCTGGATTGTGTAAACGAAGT
 CACCTCTTACTTCAAGTTTATTGGTCCGGTAGCTGGAATGGCAGTTTATCATGGCAAACCTGTTGGATG
 GTTTTTTTCATCCGCCATTTTACAAGATGATGCTTCAAAACCAATAACCCCTTATGATATGGAATCTGT
 GGATAGTGAATATTACAATCCCTAAGATGGATTCTTGAAAATGACCCAACAGAATTGGACCTCAGGTTT
 ATCATAGATGAAGAACTTTTGGACAGACACATCAACATGAGCTGAAAAATGGTGGATCAGAAATAGTTG
 TCACCAATAAGAACAAGGAATATTTATCTTGTAAATACAATGGCGATTTGTAACCGAATCCAGAA
 GCAAAATGGCTGCTTTTAAAGAGGGATTCTTTGAACTAATACCACAGGATCTCATCAAAATTTTTGATGAA
 AATGAACTAGAGCTTCTTATGTGTGACTGGGAGATGTTGATGTGAATGACTGGAGGGAACATACAAGT
 ATAAAAATGGCTACAGTCAAAATCATCAGTTATACAGTGGTTTTGGAAGGCTGTTTTAATGATGGATTC
 AGAAAAAGAATAAGATTACTTCAGTTTGTCACTGGCACATCTCGGGTGCCTATGAATGGATTTGCTGAA
 CTATACGGTTCAAATGGACCACAGTCAATTTACAGTTGAACAGTGGGTACGCCTGAAAAGCTGCCAAGAG
 CTCATACCTGTTTTAATCGCCTGGACTTGCCACCTTATGAATCATTTGAAGAATTATGGGATAAAGTTCA
 GATGGCAATTGAAAACACCCAGGCTTTGATGGAGTTGAT

ACGCGTACGCGGCCGCTCGAGCAGAAACTCATCTCAGAAGAGGATCTGGCAGCAAATGATATCCTGGATT
 ACAAGGATGACGACGATAAGGTTTAA

Protein Sequence: >RC221706 representing NM_006154
 Red=Cloning site Green=Tags(s)

MATCAVEVFGLEDEENSRIVRVVIAGIGLAKKDILGASDPYVRVTLYDPMNGVLT SVQTKTIKSLNP
 KWNEEILFRVHPQQHRLLEFVFDENRL TRDDFLGQVDVPLYPLPTENPRLRERPYFKDFVLP
 HRSRSHKSRV KGYLRKMTYLPKTSGEDDNAEQAEELPGWVVDQPDAAACHLQQQEPSP
 LPPGWEERQDILGRYYV NHESRRQWKRPTPQDNLDAENGIQLQAQRAFTRRQISEETESVDN
 QESSENWEI IREDEATMYSSQ AFPSPPPSSNLDVPTHAEELNARLTIFGNSAVSQPASSN
 HSSRRGLQAYTFEEQPTLPVLLPTSSGL PPGWEEKQDERGRSYYVDHNSRTTWTWKPTV
 QATVETSQLTSSQSAGPQSQASTSDSGQVQTQPSEIEQ GFLPKGWVHRHAPNGRPF
 FIDHNTKTTTWEDPRLKIPAHLRGKTSLDTSNDLGPLPPGWEERTHTDGRIF YINHN
 IKRTQWEDPRLNVAITGPAVPYSRDYKRKYEFFRRKLLKQNDIPNKFEMKLRRATVLE
 DSYRRI MGVKRADFLKARLWIEFDGEKGLDYGGVAREWFFLISKEMFNYYGLFEYSATD
 NYTLQINPNSGLCNED HLSYFKF IGRVAGMAVYHGKLLDGGFFIRPFYKMLHKPITLH
 DMESVDSEYYNSLRWILENDPTELDLRF IIDEELFGQTHQHELKNGGSEIVVTNKNK
 KEYIYLVIQWRFVNR IQKQMAAFKEGFFELIPQDLIKIFDE NELELLMCGLGDVDVND
 WREHTKYKNGYSANHQVIQWFWKAVLMM DSEKRIRLLQFVTGTSRVPMMNGFAE
 LYGNSGPQSFTVEQWGTPEKLPRAHTCFNRLDLPPYESFEELWDKLQMAIENTQGF
 DGVD

TRTRPLEQKLISEEDLAANDILDYKDDDDKV

Chromatograms: https://cdn.origene.com/chromatograms/mk6508_f01.zip

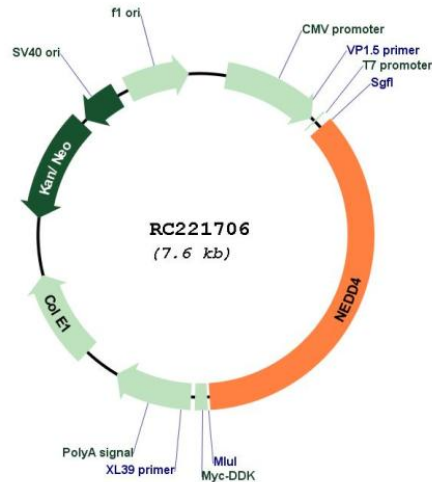
Restriction Sites: SgfI-MluI

Cloning Scheme:

Cloning sites used for ORF Shuttling:



* The last codon before the Stop codon of the ORF

Plasmid Map:


ACCN: NM_006154

ORF Size: 2700 bp

OTI Disclaimer: The molecular sequence of this clone aligns with the gene accession number as a point of reference only. However, individual transcript sequences of the same gene can differ through naturally occurring variations (e.g. polymorphisms), each with its own valid existence. This clone is substantially in agreement with the reference, but a complete review of all prevailing variants is recommended prior to use. [More info](#)

OTI Annotation: This clone was engineered to express the complete ORF with an expression tag. Expression varies depending on the nature of the gene.

Components: The ORF clone is ion-exchange column purified and shipped in a 2D barcoded Matrix tube containing 10ug of transfection-ready, dried plasmid DNA (reconstitute with 100 ul of water).

Reconstitution Method:

1. Centrifuge at 5,000xg for 5min.
2. Carefully open the tube and add 100ul of sterile water to dissolve the DNA.
3. Close the tube and incubate for 10 minutes at room temperature.
4. Briefly vortex the tube and then do a quick spin (less than 5000xg) to concentrate the liquid at the bottom.
5. Store the suspended plasmid at -20°C. The DNA is stable for at least one year from date of shipping when stored at -20°C.

RefSeq: [NM_006154.1](#), [NP_006145.1](#)

RefSeq Size: 5749 bp

RefSeq ORF: 2703 bp

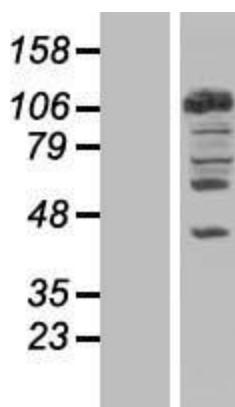
Locus ID: 4734

UniProt ID: [P46934](#)

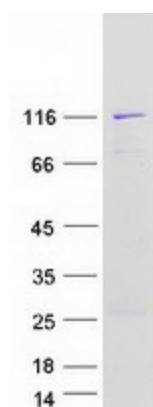
Cytogenetics: 15q21.3

Protein Families:	Druggable Genome
Protein Pathways:	Endocytosis, Ubiquitin mediated proteolysis
MW:	104 kDa
Gene Summary:	This gene is the founding member of the NEDD4 family of HECT ubiquitin ligases that function in the ubiquitin proteasome system of protein degradation. The encoded protein contains an N-terminal calcium and phospholipid binding C2 domain followed by multiple tryptophan-rich WW domains and, a C-terminal HECT ubiquitin ligase catalytic domain. It plays critical role in the regulation of a number of membrane receptors, endocytic machinery components and the tumor suppressor PTEN. [provided by RefSeq, Jul 2016]

Product images:



Western blot validation of overexpression lysate (Cat# [LY416833]) using anti-DDK antibody (Cat# [TA50011-100]). Left: Cell lysates from untransfected HEK293T cells; Right: Cell lysates from HEK293T cells transfected with RC221706 using transfection reagent MegaTran 2.0 (Cat# [TT210002]).



Coomassie blue staining of purified NEDD4 protein (Cat# [TP321706]). The protein was produced from HEK293T cells transfected with NEDD4 cDNA clone (Cat# RC221706) using MegaTran 2.0 (Cat# [TT210002]).