

Product datasheet for **RC221705**

TLL1 (NM_194252) Human Tagged ORF Clone

Product data:

Product Type:	Expression Plasmids
Tag:	Myc-DDK
Symbol:	TLL1
Synonyms:	bA244O19.1; C9orf20
Mammalian Cell Selection:	Neomycin
Vector:	pCMV6-Entry (PS100001)
E. coli Selection:	Kanamycin (25 ug/mL)



[View online »](#)

ORF Nucleotide Sequence: >RC221705 representing NM_194252
 Red=Cloning site Blue=ORF Green=Tags(s)

TTTTGTAATACGACTCACTATAGGGCGCCGGGAATTCGTGACTGGATCCGGTACCGAGGAGATCTGCC
 GCCGGATCGCC

ATGCCCGCGCTGCCTCTGTGACAGGCAGGGTACGTGGGCAGCCTCGCCTATGAGGTCGCTGGGGCTCG
 GCCGGCGATTGTCCCTTCCCGACCCCGTCTCGATGCGGTGACTGCCGCTGTCAACCCGAGCCTGAGCGA
 TCATGGCAACGGGCTCGGGCGGGGAACCGTGGCAGCGGCTGCAGCGGGCAGTTTGGTGGCGGACTGG
 GGCGCGGAGCGCGCGGGCGGGCGGGTGGCACTGGCACTGGCCCCGGCCCTGAGCACCATGCGGCGGG
 GCAGCTCCGAGAGCGAGCTGGCGGCCCGGTGGGAGGCGGAGCGGTGGCTGCGGCCAAAGCGGCGGCCAA
 AGCTGAGGCCGAGGCCACAGCGGAGACGGTGGCGGAACAGGTCCGCGTGGACGCGGGCGCGCCGGGAA
 CCGGAGTGCAAGGCAGGGAGGAGCAGCCCAAGGTCCTGGCCCCGGCCCCGGCGCAGCCAGTGGCGCTG
 AGGAGGGGAACACCCAGGTCCTTACGCGGCCGCCACGCTGCCCCGTCGAAGCCGAAGCCGGTGA
 GGGCTCTGCCCGACGGGAAGCCCGGGACAAGGGCCGAAGCTGCAAGCGGAGCTCGGGCCACGGTTCC
 GGCGAGAACGGCTCCCAGCGGCCGGTACCGTGGACAGCTCCAAGGCCAGGACCTCCCTGGATGCCCTGA
 AGATCAGCATCCGCCAGCTCAAGTGAAGGAGTCCCATTGGCCGGCGCTTGCCTTGTGACATCTACTG
 GCATGGAGTTTCATTTACGACAATGACATATTCTCCGGTCAAGTGAACAAGTTTCCAGGCATGACGGAG
 ATGGTGCCTAAAATTACTCTGAGCAGAGCAGTGAAGACCATGCAGAATCTTTCTGAGGAGTACAAT
 TCTACCTCGCTCATGGATTCTGCTGACGAGTCCAGCTCTTTGTTGCTCAGGTTCAAATGGTGAAGA
 CGATGACCCCTCTGGAAGCCACTTTTATCGTGAACCTGATGGTGGTGTGTCAGGGTATGGAATCTAC
 CTCATTAAGACCCAGTACATCCGCTGGCAGGGACCTCCAGAGCAGGCCAGCGGTGGTCCAGGAGT
 ACATCTGCAAACCTCTCCTTATCGACAAGCTCAAGTTGATATTCGTCTGTATGTCTTACTCAAGTCCTT
 AGACCCCTTAGAGATTTATATAGCCAAAGACGGACTCTCTAGGTTTTGTACCGAGCCATATCAGGAGCC
 ACCCCCAAAAACCTGCACCGCATCTTTATGCACCTAACCAACTATTCACCTGAACATCCACAGCGGCAACT
 TCATCCACTCGGACAGTGTAGCACTGGCAGCAAAAGGACTTTTTCCAGCATCCTTTGTAGACTGTCTTC
 CAAAGCGTTGACATCAAGAAGGTCTGGTCTGACATCATCTCCGTGGTATTAAAGACGGTATCGCGCTG
 ACTCCAGAGCTCAAAGTCTTCTACCAGTACAGACATCCCCACGGGGAGGCCGGGCCACGCTCTCCAGG
 TAACCATGCCAGTCCAGCCTGCGTTTCCAGCCTTGACCGCCTCAAGAGGGCTCTCTGGCTTCGTGT
 AGGA

AGCGGACCGACGCGTACCGGCGGCTCGAGCAGAACTCATCTCAGAAGAGGATCTGGCAGCAAATGATATCC
 TGGATTACAAGGATGACGACGATAAGGTTTAA

Protein Sequence: >RC221705 representing NM_194252
 Red=Cloning site Green=Tags(s)

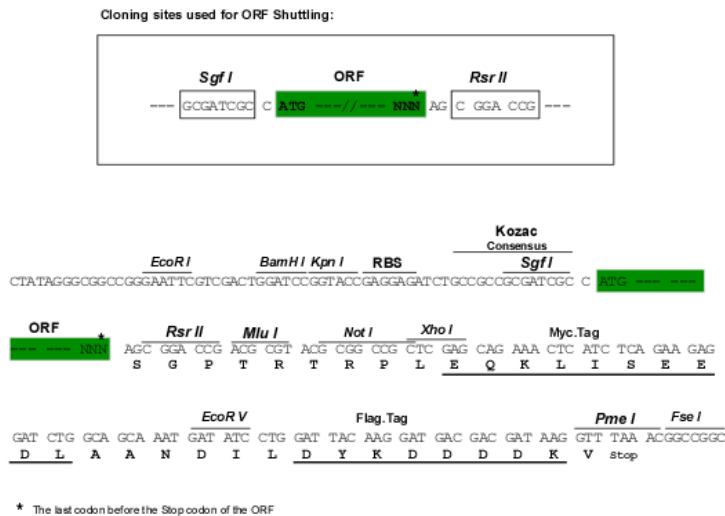
MAAAASVTGRVTWAASPMRSLGLGRRLSLPGPRLDAVTAAVNPSLSDHGNGLGRGTRGSGCSGGSLVADW
 GGGAAAAAVALALAPALSTMRRGSSESELAARWEAEVAAAACAAKAEAEATAETVAEQVRVDAGAAGE
 PECKAGEEQPKVLAPAPAQPSAAEEGNTQVLQRPPPTLPPSKPKPVQGLCPHGKPRDKGRSCKRSGHGS
 GENGSQRPVTVDSSKARTSLDALKISIRQLKWKKEFPFGRRLPCDIYWHGVSFHDNDFSGQVNFPGMTE
 MVRKITLSRAVRMQNLFPEEYNFYPRSWILPDEFQLFVAQVMVKDDDPSPWKPTFIVKPDGGCQGDGIY
 LIKDPDIRLAGTLQSRPAVVQEYICKPLLDKLFDFIRLYVLLKSLDPLEIYIAKDGLSRFCTEPYQEP
 TPKNLHRIFMHLTNYSLNIHSGNFIHSDSASTGSKRTFSSILCRLSSKGVDIKKVWSDIISVVIKTIAL
 TPCLKVYQSDIPTGRPGPTCFQVTIASSQPAFPALTGLKRALWLRVG

SGPTRRRLEQKLISEEDLAANDILDYKDDDDKV

Chromatograms: https://cdn.origene.com/chromatograms/ja1366_f07.zip

Restriction Sites: SgfI-RsrII

Cloning Scheme:



ACCN: NM_194252

ORF Size: 1614 bp

OTI Disclaimer: The molecular sequence of this clone aligns with the gene accession number as a point of reference only. However, individual transcript sequences of the same gene can differ through naturally occurring variations (e.g. polymorphisms), each with its own valid existence. This clone is substantially in agreement with the reference, but a complete review of all prevailing variants is recommended prior to use. [More info](#)

OTI Annotation: This clone was engineered to express the complete ORF with an expression tag. Expression varies depending on the nature of the gene.

Components: The ORF clone is ion-exchange column purified and shipped in a 2D barcoded Matrix tube containing 10ug of transfection-ready, dried plasmid DNA (reconstitute with 100 ul of water).

- Reconstitution Method:**
1. Centrifuge at 5,000xg for 5min.
 2. Carefully open the tube and add 100ul of sterile water to dissolve the DNA.
 3. Close the tube and incubate for 10 minutes at room temperature.
 4. Briefly vortex the tube and then do a quick spin (less than 5000xg) to concentrate the liquid at the bottom.
 5. Store the suspended plasmid at -20°C. The DNA is stable for at least one year from date of shipping when stored at -20°C.

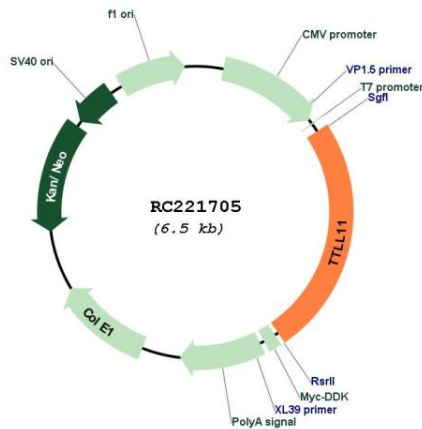
Note: Plasmids are not sterile. For experiments where strict sterility is required, filtration with 0.22um filter is required.

RefSeq: [NM_194252.2](#), [NP_919228.2](#)

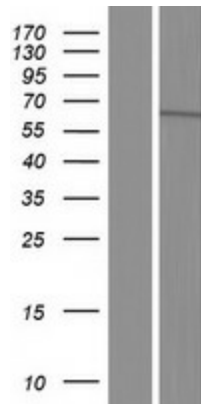
RefSeq Size: 2023 bp
RefSeq ORF: 1347 bp
Locus ID: 158135
UniProt ID: [Q8NHH1](#)
Cytogenetics: 9q33.2
MW: 57.9 kDa

Gene Summary: Polyglutamase which preferentially modifies alpha-tubulin. Involved in the side-chain elongation step of the polyglutamylation reaction rather than in the initiation step (By similarity). Required for CCSAP localization to both spindle and cilia microtubules (PubMed:22493317). Generates long side-chains (By similarity).[UniProtKB/Swiss-Prot Function]

Product images:



Circular map for RC221705



Western blot validation of overexpression lysate (Cat# [LY405185]) using anti-DDK antibody (Cat# [TA50011-100]). Left: Cell lysates from un-transfected HEK293T cells; Right: Cell lysates from HEK293T cells transfected with RC221705 using transfection reagent MegaTran 2.0 (Cat# [TT210002]).