

Product datasheet for **RC221700**

SPFH2 (ERLIN2) (NM_007175) Human Tagged ORF Clone

Product data:

Product Type:	Expression Plasmids
Product Name:	SPFH2 (ERLIN2) (NM_007175) Human Tagged ORF Clone
Tag:	Myc-DDK
Symbol:	SPFH2
Synonyms:	C8orf2; Erlin-2; NET32; SPFH2; SPG18
Mammalian Cell Selection:	Neomycin
Vector:	pCMV6-Entry (PS100001)
E. coli Selection:	Kanamycin (25 ug/mL)
ORF Nucleotide Sequence:	>RC221700 representing NM_007175 Red=Cloning site Blue=ORF Green=Tags(s)

TTTTGTAATACGACTCACTATAGGGCGGCCGGAATTCGTCGACTGGATCCGGTACCGAGGAGATCTGCC
GCC**CGATCGCC**

ATGGCTCAGTTGGGAGCAGTTGTGGCTGTGGCTTCCAGTTTCTTTTGTGCATCTCTTCTCAGCTGTGC
ACAAGATAGAAGAGGGACATATTGGGGTATATTACAGAGGCGGTGCCCTGCTGACTTCGACCAGCGGCC
TGGTTTCCATCTCATGCTCCCTTTCATCACATCATATAAGTCTGTGCAGACCACACTCCAGACAGATGAG
GTGAAGAATGTACCTTGTGGACTAGTGGTGGTGTGATGATCTACTTTGACAGAATTGAAGTGGTGAAC
TCCTGGTCCCGAACGCAGTGTATGATATAGTGAAGAACTATACTGCTGACTATGACAAGGCCCTCATCTT
CAACAAGATCCACCACGAACTGAACAGTTCTGCAGTGTGCACACGCTTCAAGAGGTCTACATTGAGCTG
TTTGATCAGATTGATGAAAATCTCAAATGGCTTTGCAACAGGACCTGACCTCCATGGCCCTGGGCTGG
TCATTCAAGCTGTGCGGGTAACAAAGCCCAACATACCAGAGGCAATCCGCAGAAACTACGAGTTGATGGA
AAGTGAGAAGACAAAGCTTCTCATTGCCGCCAGAAAACAGAAGGTGGTGGAAAAGGAAGCAGAGACAGAG
CGGAAGAAGGCGCTCATTGAGGCAGAAAAGTGGCCAGGTGGCTGAGATCACCTACGGGCAGAAGGTGA
TGGAGAAGGAGACTGAGAAGAAGATTCAGAAATGAAGATGCTGCATTTCTGGCCCGGGAAGGCAAA
GGCAGATGCTGAGTGCTACACTGCTATGAAAATAGCCGAAGCCAATAAGCTGAAGCTAACCCCTGAATAT
CTGCAGCTGATGAAGTACAAGGCCATTGCTTCCAACAGCAAGATTTACTTTGGCAAGACATTCTTAACA
TGTTTCATGGACTCTGCGGCGAGTGTGAGCAAGCAGTTTGGAGGGCTAGCTGACAAGCTAAGCTTTGGCTT
AGAAGATGAACCCTTGGAGACGGCCACTAAGGAGAAT

ACGCGTACGCGGCCGCTCGAGCAGAAACTCATCTCAGAAGAGGATCTGGCAGCAAATGATATCCTGGATT
ACAAGGATGACGACGATAAGGTTTAA



[View online »](#)

Protein Sequence: >RC221700 representing NM_007175
Red=Cloning site Green=Tags(s)

MAQLGAVVAVASSFFCASLFSAVHKIEEGHIGVYYRGGALLTSTSGPGFHLMLPFITSYKSVQTTLQTDE
 VKNVPCGTSGGVMIFYDRIEVNFLVPNAVYDIVKNYADYDKALIFNKIHHELNQFCSVHTLQEVYIEL
 FDQIDENLKLALQQDLTSMAPGLVIQAVRVTKPNIPEAIRRNYELMESEKTKLLIAAQKQKVVEKEAETE
 RKKALIEAEKVAQVAEITYGQKVMKEKETEKKISEIEDAAFLAREKAKADAECYTAMKIAEANKLKLTPPEY
 LQLMKYKAIASNSKIYFGKDIPNMFMSAGSVSKQFEGGLADKLSFGLEDEPLETATKEN

TRTRPLEQKLISEEDLAANDILDYKDDDDKV

Chromatograms: https://cdn.origene.com/chromatograms/mk6493_f05.zip

Restriction Sites: SgfI-MluI

Cloning Scheme:



ACCN: NM_007175

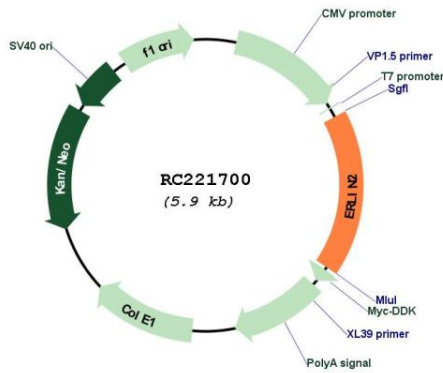
ORF Size: 1017 bp

OTI Disclaimer: Due to the inherent nature of this plasmid, standard methods to replicate additional amounts of DNA in E. coli are highly likely to result in mutations and/or rearrangements. Therefore, OriGene does not guarantee the capability to replicate this plasmid DNA. Additional amounts of DNA can be purchased from OriGene with batch-specific, full-sequence verification at a reduced cost. Please contact our customer care team at custsupport@origene.com or by calling 301.340.3188 option 3 for pricing and delivery.

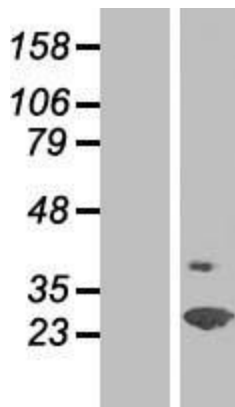
The molecular sequence of this clone aligns with the gene accession number as a point of reference only. However, individual transcript sequences of the same gene can differ through naturally occurring variations (e.g. polymorphisms), each with its own valid existence. This clone is substantially in agreement with the reference, but a complete review of all prevailing variants is recommended prior to use. [More info](#)

OTI Annotation:	This clone was engineered to express the complete ORF with an expression tag. Expression varies depending on the nature of the gene.
Components:	The ORF clone is ion-exchange column purified and shipped in a 2D barcoded Matrix tube containing 10ug of transfection-ready, dried plasmid DNA (reconstitute with 100 ul of water).
Reconstitution Method:	<ol style="list-style-type: none">1. Centrifuge at 5,000xg for 5min.2. Carefully open the tube and add 100ul of sterile water to dissolve the DNA.3. Close the tube and incubate for 10 minutes at room temperature.4. Briefly vortex the tube and then do a quick spin (less than 5000xg) to concentrate the liquid at the bottom.5. Store the suspended plasmid at -20°C. The DNA is stable for at least one year from date of shipping when stored at -20°C.
RefSeq:	NM_007175.8
RefSeq Size:	4767 bp
RefSeq ORF:	1020 bp
Locus ID:	11160
UniProt ID:	O94905
Cytogenetics:	8p11.23
Domains:	Band_7
MW:	37.7 kDa
Gene Summary:	This gene encodes a member of the SPFH domain-containing family of lipid raft-associated proteins. The encoded protein is localized to lipid rafts of the endoplasmic reticulum and plays a critical role in inositol 1,4,5-trisphosphate (IP3) signaling by mediating ER-associated degradation of activated IP3 receptors. Mutations in this gene are a cause of spastic paraplegia-18 (SPG18). Alternatively spliced transcript variants encoding multiple isoforms have been observed for this gene. [provided by RefSeq, Feb 2012]

Product images:



Circular map for RC221700



Western blot validation of overexpression lysate (Cat# [LY416148]) using anti-DDK antibody (Cat# [TA50011-100]). Left: Cell lysates from untransfected HEK293T cells; Right: Cell lysates from HEK293T cells transfected with RC221700 using transfection reagent MegaTran 2.0 (Cat# [TT210002]).