

Product datasheet for RC221690

DKK3 (NM_001018057) Human Tagged ORF Clone

Product data:

Product Type:	Expression Plasmids
Product Name:	DKK3 (NM_001018057) Human Tagged ORF Clone
Tag:	Myc-DDK
Symbol:	DKK3
Synonyms:	REIC; RIG
Mammalian Cell Selection:	Neomycin
Vector:	pCMV6-Entry (PS100001)
E. coli Selection:	Kanamycin (25 ug/mL)
ORF Nucleotide Sequence:	>RC221690 ORF sequence Red=Cloning site Blue=ORF Green=Tags(s)

TTTTGTAATACGACTCACTATAGGGCGGCCGGAATTCGTCGACTGGATCCGGTACCGAGGAGATCTGCC
GCC**CGGATCGCC**

ATGCAGCGGCTTGGGGCCACCCTGCTGTGCCTGCTGCTGGCGGGCGGTCCCCACGGCCCCGCGCCCG
CTCCGACGGCGACCTCGGCTCCAGTCAAGCCCGGCCGGCTCTCAGTACCCGCAGGAGGAGGCCACCCT
CAATGAGATGTTCCGCGAGGTTGAGGAAGTATGAGGACACGCAGCACAATTGCGCAGCGGGTGGAA
GAGATGGAGGCAGAAGAAGCTGCTGCTAAAGCATCATCAGAAGTGAACCTGGCAAACCTACCTCCCAGT
ATCACAATGAGACCAACACAGACACGAAGTTGAAATAATACCATCCATGTGCACCGAGAAATTCACAA
GATAACCAACAACCAGACTGGACAAATGGTCTTTTCAGAGACAGTTATCATATCTGTGGGAGACGAAGAA
GGCAGAAGGAGCCACGAGTGCATCATCGACGAGGACTGTGGGCCAGCATGTACTGCCAGTTTGCCAGT
TCCAGTACACCTGCCAGCCATGCCGGGGCCAGAGGATGCTCTGCACCCGGGACAGTGAAGTGTGGAGA
CCAGCTGTGTGCTGGGGTCACTGCACCAAAATGGCCACCAGGGGCGCAATGGGACCATCTGTGACAAC
CAGAGGGACTGCCAGCCGGGGTGTGCTGTGCCTTCCAGAGAGGCTGCTGTTCCCTGTGTGCACACCCC
TGCCCGTGGAGGGCGAGCTTGGCATGACCCCGCCAGCCGGCTTCTGGACCTCATCACCTGGGAGCTAGA
GCCTGATGGAGCCTTGGACCGATGCCCTTGTGCCAGTGGCCTCCTCTGCCAGCCCCACAGCCACAGCCTG
GTGTATGTGTGCAAGCCGACCTTCGTGGGGAGCCGTGACCAAGATGGGGAGATCCTGCTGCCAGAGAGG
TCCCCGATGAGTATGAAGTTGGCAGCTTCATGGAGGAGGTGCCAGGAGCTGGAGGACCTGGAGAGGAG
CCTGACTGAAGAGATGGCGCTGGGGGAGCCTGCCGCTGCCCGCTGCACTGCTGGGAGGGGAAGAGATT

ACGCGTACGCGGCCGCTCGAGCAGAAACTCATCTCAGAAGAGGATCTGGCAGCAAATGATATCCTGGATT
ACAAGGATGACGACGATAAGGTTTAA



[View online »](#)

Protein Sequence: >RC221690 protein sequence
Red=Cloning site Green=Tags(s)

MQRLGATLLCLLLAAAVPTAPAPAPTATSAPVKPGPALSYPQEEATLNEMFREVEELMEDTQHKLRSAVE
 EMEAEAAAASSEVNLANLPPSYHNETNTDTKVGNNIIVHREIHKITNNQTGMVFSSETVITSVGDEE
 GRRSHECIIDEDCGPSMYCQFASFQYTCQPCRQRMCLTRDSECCGDQLCVWGHCTKMATRGSNGTICDN
 QRDCQPGLCCAFQRGLLFPVCTPLPVEGELCHDPASRLLDLITWELEPDGALDRPCASGLLCQPHSHSL
 VYVKPTFVGSRDQGEILLPREVPDEYEVGSFMEEVRQLEDLERSLTEAMALGEPAAAAAALLGGEEI

TRTRPLEQKLISEEDLAANDILDYKDDDDKV

Chromatograms: https://cdn.origene.com/chromatograms/mk6206_f06.zip

Restriction Sites: SgfI-MluI

Cloning Scheme:

Cloning sites used for ORF Shuttling:



* The last codon before the Stop codon of the ORF

ACCN: NM_001018057

ORF Size: 1050 bp

OTI Disclaimer: The molecular sequence of this clone aligns with the gene accession number as a point of reference only. However, individual transcript sequences of the same gene can differ through naturally occurring variations (e.g. polymorphisms), each with its own valid existence. This clone is substantially in agreement with the reference, but a complete review of all prevailing variants is recommended prior to use. [More info](#)

OTI Annotation: This clone was engineered to express the complete ORF with an expression tag. Expression varies depending on the nature of the gene.

Components: The ORF clone is ion-exchange column purified and shipped in a 2D barcoded Matrix tube containing 10ug of transfection-ready, dried plasmid DNA (reconstitute with 100 ul of water).

Reconstitution Method:

1. Centrifuge at 5,000xg for 5min.
2. Carefully open the tube and add 100ul of sterile water to dissolve the DNA.
3. Close the tube and incubate for 10 minutes at room temperature.
4. Briefly vortex the tube and then do a quick spin (less than 5000xg) to concentrate the liquid at the bottom.
5. Store the suspended plasmid at -20°C. The DNA is stable for at least one year from date of shipping when stored at -20°C.

RefSeq: [NM_001018057.1](#), [NP_001018067.1](#)

RefSeq Size: 2587 bp

RefSeq ORF: 1053 bp

Locus ID: 27122

UniProt ID: [Q9UBP4](#)

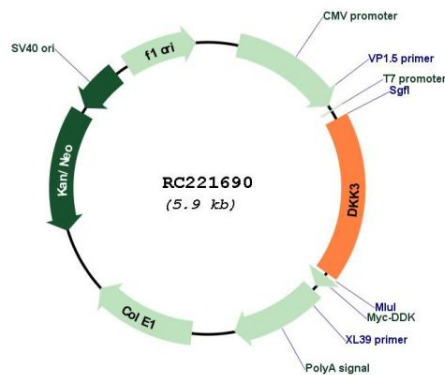
Cytogenetics: 11p15.3

Protein Families: Druggable Genome, Secreted Protein

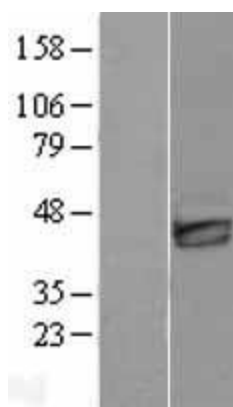
MW: 38.3 kDa

Gene Summary: This gene encodes a protein that is a member of the dickkopf family. The secreted protein contains two cysteine rich regions and is involved in embryonic development through its interactions with the Wnt signaling pathway. The expression of this gene is decreased in a variety of cancer cell lines and it may function as a tumor suppressor gene. Alternative splicing results in multiple transcript variants encoding the same protein. [provided by RefSeq, Jul 2008]

Product images:



Circular map for RC221690



Western blot validation of overexpression lysate (Cat# [LY422711]) using anti-DDK antibody (Cat# [TA50011-100]). Left: Cell lysates from untransfected HEK293T cells; Right: Cell lysates from HEK293T cells transfected with RC221690 using transfection reagent MegaTran 2.0 (Cat# [TT210002]).