

Product datasheet for **RC221686**

TOR1AIP1 (NM_015602) Human Tagged ORF Clone

Product data:

Product Type:	Expression Plasmids
Product Name:	TOR1AIP1 (NM_015602) Human Tagged ORF Clone
Tag:	Myc-DDK
Symbol:	TOR1AIP1
Synonyms:	LAP1; LAP1B; LAP1C; LGMD2Y
Vector:	pCMV6-Entry (PS100001)
E. coli Selection:	Kanamycin (25 ug/mL)
Cell Selection:	Neomycin



[View online »](#)

ORF Nucleotide Sequence:

>RC221686 representing NM_015602
 Red=Cloning site Blue=ORF Green=Tags(s)

TTTTGTAATACGACTCACTATAGGGCGGCCGGGAATTCGTCGACTGGATCCGGTACCGAGGAGATCTGCC
 GCC**CGGATCGCC**

ATGGCGGGCGACGGCGGGCAGAGGCGGTGCGGGAAGGATGGGGTGTGTACGTCACCCCGAGGCC
 CCATCCGAGAGGGAAGGGCGCGCTCGCCCTCAAAATGGCGGCAGCAGCGATGCGCCTGCGTACAGAAC
 TCCTCCGTCGCGCCAGGGCCGGCGGAAGTGAGGTTCTCGGACGAGCCGCCAGAAGTGTACGGCGACTTC
 GAGCCCTGTTGGCCAAAGAAAGGTCCCGGTGGGAAAACGAACCCGGCTAGAAGAGTTCGGTCCGATT
 CTGCGAAAGAGGAAGTGAGAGAAAGCGCTACTACCTTCGGTCTAGGCAGCGGAGGCAGCCGCGACCCCA
 GAAACCGAGGAAATGAAGACGCGAAGGACTACCCGCCTCAGCAGCAGCACTCAGAGCAGCCTCCGCTA
 CAGCCGCTCCTGTTATGACCAGGAGAGGGCTGCGGGACTCTCATTCTCTGAAGAGGATGAAGCATCTT
 CCCAACTGATTTAAGCCAAACGATCTCAAAGAAAAGTGTGAGGAGCATAAAGAGGCTCCAGTGAGTGA
 AGATCTTGAATCAGGTTACGTCGACCCCTCTAAGATACCAAGATATGAAGCCACCAGTGTCCAACAG
 AAGGTCAATTTCTCTGAAGAAGGAGAACTGAAGAAGATGATCAAGACAGCTCTCACAGCAGTGTACTA
 CTGTTAAGGCCAGATCCAGGATTCTGATGAATCTGGAGATAAAACCACCAGATCATCTAGTCAATATAT
 AGAATCATTTTGGCAGTCATCACAAGTCAAACCTTACAGCTCATGATAAGCAACCTTCAGTGCTAAGC
 TCAGGATATCAAAAACTCCCGAGGATGGGCCCCACAACTGCAAGAATAAGGACCAGGATGCAAAATG
 ACAGCATTCTGAAATCAGAGCTTGGAAACAGTCACCATCAACCTCCAGCCGACAAGTACTGGACAACC
 CCAAAATGCATCTTTGTCAAGAGGAACCGGTGGTGGCTACTTCTCTGATAGCTGCTCTTGCCCTGGG
 AGTTTTTGGTTCTTTAGTACTCCTGAGGTAGAAACCACTGCTGTTCAAGAGTTCAGAACCATGAACT
 AACTTAAGAATAAGTACCAAGTCAAGTGAAGAGCTGTGAAAAGGAGCCAAACATTCCTGGAAAAACA
 TCTTAATAGCTCCATCCTCGGTCTCAGCTGCTATCTTACTGCTCACTGCTGCCGAGATGCTGAAGAA
 GCATTTAGGTGTCTGAGTGAACAATTGCTGATGCCTATTCTTTCTTTCTGAGTGTCCGTGCCATCCGGA
 TTGATGGGACAGATAAAGCTACTCAAGACAGTGATACTGTCAAACCTAGAGGTAGACCAAGAAGTGAACA
 TGGATTTAAGAATGGCCAGAATGCAGCTGTGGTACACCGCTTTGAGTCATTTCCCGCAGGCTCTACTTTG
 ATCTTCTACAAATATTGTGACCATGAAAACCGGCCTTCAAAGATGTAGCCTTAGTCCTGACTGTCTTAT
 TGGAGGAAGAGACTTGAACAAGTCTAGGCCTAAAGGAAGTTGAAGAAAAAGTAAAGAGATTTTCTTAA
 AGTCAAGTTCACCAATTCTAACACACCAACTCCTACAATCATATGGACCCAGACAACTGAATGGCCCT
 TGGAGCCGATTTCTCACTTAGTCTGCCTGTGCAACCTGAAAATGCCCTGAAAAGGGGCATCTGCTTA

ACGCGTACGCGGCCGCTCGAGCAGAACTCATCTCAGAAGAGGATCTGGCAGCAAATGATATCCTGGATT
 ACAAGGATGACGACGATAAGGTTTAA

Protein Sequence:

>RC221686 representing NM_015602
 Red=Cloning site Green=Tags(s)

MAGDGRRAEAVREGWGVVTPRAPIREGRGLAPQNGGSSDAPAYRTPPSRQGRREVRFSDEPPEVYVYGD
 EPLVAKERSPVGKRTRLEEFRRSDSAKEEVRESAYYLRSRQRRQPRPQETEEMKTRRTTRLLQQHSEQPPL
 QPSPVMTRRGLRDSHSSSEDEASSQTDLSQTKKTVRSIQEAPVSEDLVIRLRRPPLRYPRYEATSVQQ
 KVNFSSEGETEEDDQDSSHSSVTTVKARSRDSDESGDKTRSSSQYIESFWQSSQSNFTAHDKQPSVLS
 SGYQKTPQEWAPQTARIRTRMQNDSILKSELGNQSPSTSSRQVTGQPQNASFVKRNRWWLLPLIAALASG
 SFWFFSTPEVETTAVQEFQNMNQLKNKYQGQDEKLWKRSTFLEKHLNSSHPRSQPAILLLTAARDAEE
 ALRCLSEIADAYSSFRSVRAIRIDGTDKATQSDTVKLEVDQELSNFGKNGQNAVVHRFESFPAGSTL
 IFYKYCDHENAAFKDVALVLTVLLLEEELTGLSLGLKEVEEKVRDFLKVVF TNSNTPNSYNHMDPKLNGL
 WSRISHLVLPVQPENALKRGICL

TRTRPLEQKLISEEDLAANDILDYKDDDDKV

Chromatograms:

https://cdn.origene.com/chromatograms/mk6707_h05.zip

Restriction Sites:

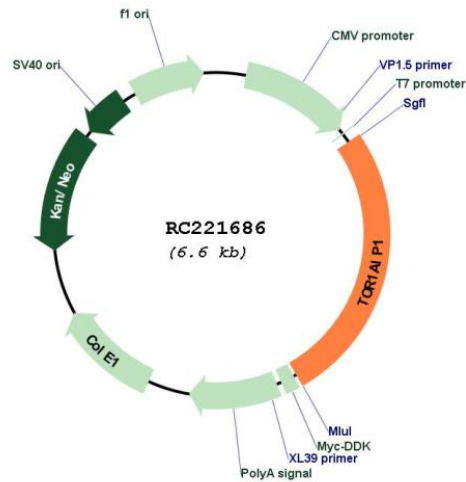
Sgfl-MluI

Cloning Scheme:

Cloning sites used for ORF Shutting:



* The last codon before the Stop codon of the ORF

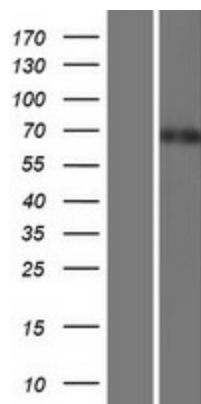
Plasmid Map:


ACCN: NM_015602

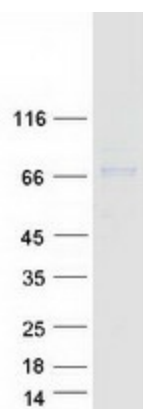
ORF Size: 1749 bp

OTI Disclaimer:	The molecular sequence of this clone aligns with the gene accession number as a point of reference only. However, individual transcript sequences of the same gene can differ through naturally occurring variations (e.g. polymorphisms), each with its own valid existence. This clone is substantially in agreement with the reference, but a complete review of all prevailing variants is recommended prior to use. More info
OTI Annotation:	This clone was engineered to express the complete ORF with an expression tag. Expression varies depending on the nature of the gene.
Components:	The ORF clone is ion-exchange column purified and shipped in a 2D barcoded Matrix tube containing 10ug of transfection-ready, dried plasmid DNA (reconstitute with 100 ul of water).
Reconstitution Method:	<ol style="list-style-type: none">1. Centrifuge at 5,000xg for 5min.2. Carefully open the tube and add 100ul of sterile water to dissolve the DNA.3. Close the tube and incubate for 10 minutes at room temperature.4. Briefly vortex the tube and then do a quick spin (less than 5000xg) to concentrate the liquid at the bottom.5. Store the suspended plasmid at -20°C. The DNA is stable for at least one year from date of shipping when stored at -20°C.
RefSeq:	NM_015602.4
RefSeq Size:	3824 bp
RefSeq ORF:	1752 bp
Locus ID:	26092
UniProt ID:	Q5JTV8
Cytogenetics:	1q25.2
MW:	66.1 kDa
Gene Summary:	This gene encodes a type 2 integral membrane protein that binds A- and B-type lamins. The encoded protein localizes to the inner nuclear membrane and may be involved in maintaining the attachment of the nuclear membrane to the nuclear lamina during cell division. Alternate splicing results in multiple transcript variants. [provided by RefSeq, Apr 2016]

Product images:



Western blot validation of overexpression lysate (Cat# [LY414449]) using anti-DDK antibody (Cat# [TA50011-100]). Left: Cell lysates from untransfected HEK293T cells; Right: Cell lysates from HEK293T cells transfected with RC221686 using transfection reagent MegaTran 2.0 (Cat# [TT210002]).



Coomassie blue staining of purified TOR1AIP1 protein (Cat# [TP321686]). The protein was produced from HEK293T cells transfected with TOR1AIP1 cDNA clone (Cat# RC221686) using MegaTran 2.0 (Cat# [TT210002]).