

Product datasheet for RC221685

Semaphorin 5A (SEMA5A) (NM_003966) Human Tagged ORF Clone

Product data:

Product Type:	Expression Plasmids
Product Name:	Semaphorin 5A (SEMA5A) (NM_003966) Human Tagged ORF Clone
Tag:	Myc-DDK
Symbol:	Semaphorin 5A
Synonyms:	SEMAF; semF
Mammalian Cell Selection:	Neomycin
Vector:	pCMV6-Entry (PS100001)
E. coli Selection:	Kanamycin (25 ug/mL)
ORF Nucleotide Sequence:	>RC221685 ORF sequence Red=Cloning site Blue=ORF Green=Tags(s)

TTTTGTAATACGACTCACTATAGGGCGGCCGGAATTCGTCGACTGGATCCGGTACCGAGGAGATCTGCC
GCC**CGATCGCC**

ATGAAGGGAACTGTGTTATAGCATGGCTGTTCTCAAGCCTGGGGCTGTGGAGACTCGCCACCCAGAGG
CCCAGGGTACGACTCAGTGCCAGAGAACCAGCATCCAGTCATCTCTATAAAGAAATTGGCCCTGGTT
ACGGGAGTTCAGAGCGAAGAATGCTGTGGATTTCTCGCAGTTAACATTTGACCCAGGACAGAAAGAACTT
GTTGTAGGAGCAAGAACTACCTCTTCAGGTTACAGCTTGAGGATCTGTCTTTATCCAGGCTGTGGAAT
GGGAGTGTGATGAAGCTACCAAAAAGGCCTGTTACAGCAAAGGCAAATCAAAGGAGGAATGTCAGAACTA
CATCCGGGTGCTTCTGGTGGGTGGCGACCGGTTATTCACCTGTGGGACCAATGCATTACGCCTGTCTGC
ACCAACCGCTCGTTGAGCAACCTGACTGAGATCCATGATCAGATCAGTGGCATGGCCCGCTGTCCCTACA
GTCCCCAGCACAATTCACAGCGCTCCTCACAGCTGGTGGGAGCTCTATGCTGTACAGCCATGGATTT
TCCAGGACGTGATCCTGCCATTTACCGAAGCCTAGGCATTTTACCTCCTCTCCGCACGGCGCAGTACAAC
TCCAAATGGCTCAATGAGCCAACTTTGTGTCATCTTATGACATCGGAAATTTTACCTACTTCTTTTTCC
GAGAAAATGCAGTAGAGCATGACTGTGGGAAAACAGTGTCTCCAGAGCTGCCGGGTGTGCAAGAACGA
TATTGGTGGGCGCTTCTGCTGGAAGACACCTGGACCACATTCATGAAGGCTCGCTGAAGTGTCTCCGT
CCTGGGGAAGTCCCCTTTTACTACAACGAATTGCAGAGTACTTTTCTTCCGCTGAGCTGGATTTGATCT
ATGGCATCTTTACCACCAATGTGAACAGCATTGCGGCCTCAGCTGTGTGGTCTTCAACCTGAGCGCCAT
CGCGCAGGCTTCTCTGGGCCCTTCAAGTACCAAGAAAACCTCGCGCTCGGCTGGCTACCGTATCCCAAC
CCAAACCCCACTTCCAGTGTGGCACCGTGGACCAGGGCCTGTACGTGAACCTGACCGAGAGAAATCTGC
AGGATGCTCAGAAGTTCATTCTGATGCATGAGGTGGTACAGCCAGTGACCACAGTGCCCTCCTTCATGGA
GGACAATAGCCGCTTTTCCACGTGGCAGTCGACGTGGTGCAGGGCAGAGAAGCGCTCGTCCACATCATC
TATTTGGCCACAGATTACGGAACCATTAAGAAAGTGGGGTACCCCTGAATCAGACCTCAAGCAGCTGTT
TGCTGGAAGAGATTGAGCTTCTCCCTGAGAGGGCGAGGGAGCCCATCAGGAGCCTGCAGATCCTGCACAG
CCAGAGTGTCTGTTCTGTTGGCCTGCGGGAGCACGTGGTCAAGATCCCCCTGAAGAGGTGCCAGTCTAC



[View online »](#)

CGCACACGCAGCACCTGCATTGGGGCCAGGACCCCTACTGTGGCTGGGATGTGGTAATGAAGAAATGCA
 CAAGCCTGGAGGAGACCTGAGCATGACGCAGTGGGAACAGAGCATCTCTGCGTGTCCGACCAGGAATCT
 CACCGTGGATGGGCACCTTGGTGTGTGGTCTCCGTGGACGCCCTTGACGCACACAGATGGCAGCGCCGTG
 GGATCCTGCCTCTGTGCAACCCGCTCTGCGACAGCCCGCCCGCAGTGTGGTGGCTGGCAGTGCAGGG
 GCCCTGGCATGGAGATCGCAACTGTCCAGGAACGGAGGCTGGACTCCCTGGACCTCGTGGTCTCCCTG
 CAGCACTACCTGTGGGATCGGCTCCAGGTGCGGCAGCGCTCTGCAGCAACCCCACTCCCAGGCACGGG
 GGCCGGGTGTGCGTGGGACAGAACCAGGAAAGATACTGCAATGAACATTTGCTATGTCCCCACACA
 TGTTCGGACAGGCTGGGGTCTTGGGAACGGTGACAGCCCAATGCGGGGGTGGCATTCAAGCTGCGCCG
 CAGGATCTGTGAGAATGGCCTGACTGTGCAGGCTGCAATGTGGAGTACCAGTCTTGCAACACCAACCCG
 TGTCTGAGCTGAAGAAGACCACGCCCTGGACACCCTGGACACCCTGTCAACATCTCTGACAACGCGGCC
 ACTATGAGCAACGATTCCGATACACATGCAAGCCCGCCTGGCTGATCCGAATTTGCTGGAAGTGGGAAG
 ACAGAGAATCGAAATGCGGTACTGTTCTAGCGACGGCACCAGTGGCTGCTCCACAGATGGGCTTTCTGGG
 GATTTCTGCGTGTGGGAGATACTCTGCCACACGGTCAACGGGGCTTGGTCAAGCTGGACGTCGTGGT
 CACAGTGCAGCCGTGACTGCAGCAGGGCATTGGAACCGGAAGCGTGTGCAACAACCCCGAACCCAA
 GTATGGGGGAATGCCTTGCCTTGGCCATCTCTGGAATACCAGGAATGCAACATTTTGCCTGCCAGTG
 GATGGCGTGTGGTCTTGTGTTGCCCTGGACAAAATGTTGAGCAACATGCGGGCGTGGACACTATATGA
 GGACCCGCTCTTGTCCAATCCAGCCCCGGCTATGGAGGGGACATCTGCCTGGGGCTGCACACAGAAGA
 GGCACTCTGCAACACGCAGCCCTGCCAGAGAGCTGGTGGAGTGGTGGACTGGTCTGAGTGTGAAGCC
 TCTGGCGTCCAAGTCCGCGCCCGCAGTGCATCCTCTGTTCCCATGGGAGCCAGTGTCCGGGAACA
 CCACGGAGAGCCGGCGTGTGTGTTGACTCTAATTTCCATCCAGAAATCTGTGGCAAGATCCAGTAG
 CGTAGAAGAGAAAAGGTGGAGAGTTCACATGTTCCACATGATCGCCGTGGGGCTGAGCAGTCCATC
 CTCGGCTGCCTCCTCACCTGCTGCTATACTACTGCCAGCGGTACCAGCAGCAATCCCACGATGCGA
 CTGTCATCCACCCCGTCTCACCTGCCCCCTTAATACCAGCATAACCAACCACATCAACAACTGGACAA
 GTACGACTCGGTGGAGGCATCAAGGCATTTAACAAAAACAATTTGATCCTAGAGGAAAGAAACAATAAC
 TTCAACCCACATCTCACTGGGAAGACCTATTCTAATGCCTACTTTACAGATCTCAATAATTATGATGAGT
 AC

ACGCGTACGCGGCCGCTCGAGCAGAACTCATCTCAGAAGAGGATCTGGCAGCAAATGATATCCTGGATT
 ACAAGGATGACGACGATAAGGTTTAA

Protein Sequence:

>RC221685 protein sequence
 Red=Cloning site Green=Tags(s)

MKGTGCVIAWLFSSLGLWRLAHPAEQGTTCQRTHEHPVISYKEIGPWLEFRKNAVDFSQLTFDPGQKEL
 VVGARNYLFRLQLEDLSLIQAVEWECDEATKKACYSKGSKEECQNYIRVLLVGGDRLFTCGTNAFTPVC
 TNRSLSNL TEIHDQISGMARCPYSPQHNSALLTAGGELYAATAMDFPGRDPAIYRSLGILPPLRTAQYN
 SKWLNPNFVSSYDIGNFTYFFRENAVEHDCGKTVFSRAARVCKNDIGGRFLLEDWTTFMKARLNCSR
 PGEVPFYNELQSTFFLPELDLIYGIFFTNVNSIAASAVCVFNLSAIAQAFSGPFKYQENSRSAWLPYPN
 PNPHFQCGTVDQGLYVNLTERNLQDAQFILMHEVVQPVTVPSPMEDNSRF SHVAVDVVQGREALVHII
 YLATDYGTIKKVRVPLNQTSSSCLLEEIELFPERRREPIRSLQILHSQSVLFVGLREHVVKIPLKRCQFY
 RTRSTCIGAQDPYCGWDVVMKKCTSLEESLSMTQWEQSI SACPTRNLTVDGHFGVWSPWPCTHTDGSVA
 GSCLCRTRSCDSPAPQCGGWQCEGPGMEIANCSRNGGWPWTSWSPCSTTCGIGFQVRQRSCSNPTPRHG
 GRVCVGNREERYCNEHLLCPPHMFWTGWGPWERCTAQCGGGIQARRRICENGPDCAGCNVEYQSCNTNP
 CPELKKTTPTWTPVNI SDNGGHYEQRFYRCKARLADPNLLEVGRQRIEMRYCSSDGTSGCSTDGLSG
 DFLRAGRYSAHTVNGAWSAWTSWSQCSRDCSRGIRNRKRVNNPEPKYGGMPCLGPSLEYQECNILLPCPV
 DGVWSCWSPWTKSATCGGGHYMRTRSCSNPAPAYGGDICLGLHTEALCNTQPCPESWSEWSDWSECEA
 SGVQVRARQCILLFPMGSQCSGNTTESRPCVFDNSNFIPEVSVARSSSVEEKRCGEFNMFMHIAVGLSSSI
 LGCLLTLLVYTYCORYQQSHDATVIHPVSPAPLNTSITNHINKLDKYDSVEAIKAFNKNLILEERNKY
 FNPHLTGKTYSNAYFTDLNNDYDEY

TRTRPLEQKLI SEEDLAANDILDYKDDDDKV

Chromatograms:

https://cdn.origene.com/chromatograms/mk6717_c02.zip

UniProt ID: [Q13591](#)

Cytogenetics: 5p15.31

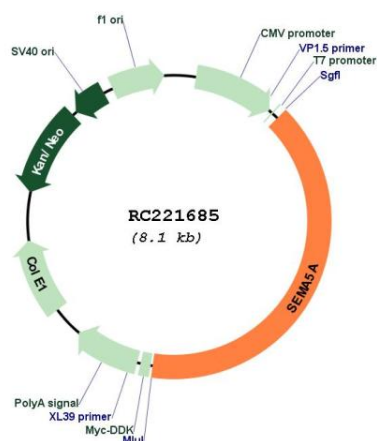
Protein Families: Transmembrane

Protein Pathways: Axon guidance

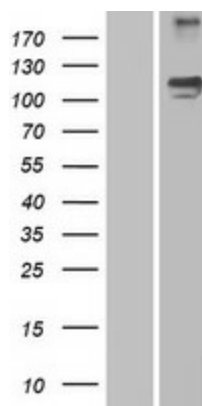
MW: 120.6 kDa

Gene Summary: This gene belongs to the semaphorin gene family that encodes membrane proteins containing a semaphorin domain and several thrombospondin type-1 repeats. Members of this family are involved in axonal guidance during neural development. This gene has been implicated as an autism susceptibility gene.[provided by RefSeq, Jan 2010]

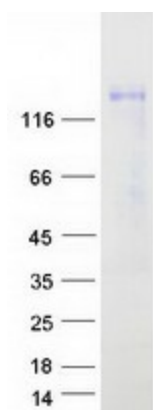
Product images:



Circular map for RC221685



Western blot validation of overexpression lysate (Cat# [LY418314]) using anti-DDK antibody (Cat# [TA50011-100]). Left: Cell lysates from untransfected HEK293T cells; Right: Cell lysates from HEK293T cells transfected with RC221685 using transfection reagent MegaTran 2.0 (Cat# [TT210002]).



Coomassie blue staining of purified SEMA5A protein (Cat# [TP321685]). The protein was produced from HEK293T cells transfected with SEMA5A cDNA clone (Cat# RC221685) using MegaTran 2.0 (Cat# [TT210002]).