

Product datasheet for RC221682L1

Leucyl tRNA synthetase (LARS) (NM_020117) Human Tagged Lenti ORF Clone

Product data:

Product Type:	Expression Plasmids
Product Name:	Leucyl tRNA synthetase (LARS) (NM_020117) Human Tagged Lenti ORF Clone
Tag:	Myc-DDK
Symbol:	Leucyl tRNA synthetase
Synonyms:	hr025Cl; HSPC192; ILFS1; LARS; LEURS; LEUS; LFIS; LRS; PIG44; RNTLS
Mammalian Cell Selection:	None
Vector:	pLenti-C-Myc-DDK (PS100064)
E. coli Selection:	Chloramphenicol (34 ug/mL)
ORF Nucleotide Sequence:	The ORF insert of this clone is exactly the same as(RC221682).
Restriction Sites:	SgfI-MluI
Cloning Scheme:	

Cloning sites used for ORF Shuttling:



* The last codon before the Stop codon of the ORF.

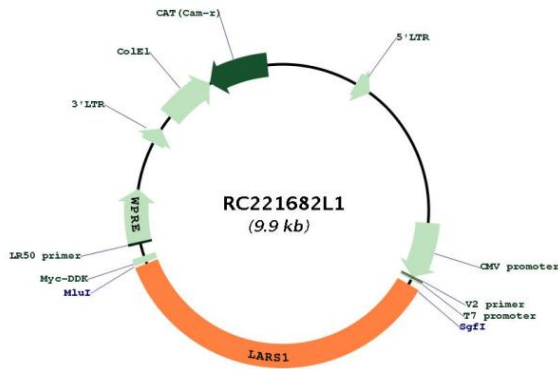
ACCN:	NM_020117
ORF Size:	3528 bp



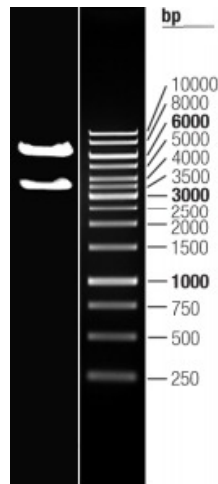
[View online »](#)

OTI Disclaimer:	The molecular sequence of this clone aligns with the gene accession number as a point of reference only. However, individual transcript sequences of the same gene can differ through naturally occurring variations (e.g. polymorphisms), each with its own valid existence. This clone is substantially in agreement with the reference, but a complete review of all prevailing variants is recommended prior to use. More info
OTI Annotation:	This clone was engineered to express the complete ORF with an expression tag. Expression varies depending on the nature of the gene.
Components:	The ORF clone is ion-exchange column purified and shipped in a 2D barcoded Matrix tube containing 10ug of transfection-ready, dried plasmid DNA (reconstitute with 100 ul of water).
Reconstitution Method:	<ol style="list-style-type: none">1. Centrifuge at 5,000xg for 5min.2. Carefully open the tube and add 100ul of sterile water to dissolve the DNA.3. Close the tube and incubate for 10 minutes at room temperature.4. Briefly vortex the tube and then do a quick spin (less than 5000xg) to concentrate the liquid at the bottom.5. Store the suspended plasmid at -20°C. The DNA is stable for at least one year from date of shipping when stored at -20°C.
RefSeq:	NM_020117.8 , NP_064502.8
RefSeq Size:	4248 bp
RefSeq ORF:	3531 bp
Locus ID:	51520
UniProt ID:	Q9P2J5
Cytogenetics:	5q32
Domains:	tRNA-synt_1
Protein Families:	Druggable Genome
Protein Pathways:	Aminoacyl-tRNA biosynthesis, Valine, leucine and isoleucine biosynthesis
MW:	134.3 kDa
Gene Summary:	This gene encodes a cytosolic leucine-tRNA synthetase, a member of the class I aminoacyl-tRNA synthetase family. The encoded enzyme catalyzes the ATP-dependent ligation of L-leucine to tRNA(Leu). It is found in the cytoplasm as part of a multisynthetase complex and interacts with the arginine tRNA synthetase through its C-terminal domain. A mutation in this gene was found in affected individuals with infantile liver failure syndrome 1. Alternatively spliced transcript variants of this gene have been observed. [provided by RefSeq, Dec 2015]

Product images:



Circular map for RC221682L1



Double digestion of RC221682L1 using SgfI and MluI