

Product datasheet for **RC221675**

OSCAR (NM_130771) Human Tagged ORF Clone

Product data:

Product Type:	Expression Plasmids
Product Name:	OSCAR (NM_130771) Human Tagged ORF Clone
Tag:	Myc-DDK
Symbol:	OSCAR
Synonyms:	PIgR-3; PIGR3
Mammalian Cell Selection:	Neomycin
Vector:	pCMV6-Entry (PS100001)
E. coli Selection:	Kanamycin (25 ug/mL)
ORF Nucleotide Sequence:	>RC221675 representing NM_130771 Red=Cloning site Blue=ORF Green=Tags(s)

TTTGTAAATACGACTCACTATAGGGCGGCCGGAATTCGTCGACTGGATCCGGTACCGAGGAGATCTGCC
GCC**CGATCGC**

ATGGCCCTGGTGCTGATCCTCCAGCTGCTGACCCTCTGGCCTCTGTGTCACACAGACATCACTCCGTCTG
TGGCCATTATAGTCCCCCAGCTTCATACCACCCTAAGCCATGGCTGGGAGCTCAGCCGGCTACAGTTGT
GACCCCTGGGGTCAACGTGACCTTGAGATGCCGGGCACCCCAACCGCTTGGAGATTTGGACTTTTCAAG
CCTGGAGAGATCGCTCCCTTCTCTCCGGGATGTGCTCCTCCGAGCTGGCAGAATTTCTTCTGGAGGAGG
TGA**CTCCAGCCCAAGGGGAATTTACCGCTGCTGCTACCGAAGGCCAGACTGGGGCCGGGTGTCTGGTC**
CCAGCCCAGCGATGTCTGGAGCTGCTGGTGACAGAGGAGCTGCCGCGGCCGTCGCTGGTGGCGCTGCC
GGGCCGGTGGTGGTCTGGCGCCAACGTGAGCCTGCGCTGCGCGGGCCGCTGCGGAACATGAGCTTCG
TGCTGTACCGCGAGGGCGTGGCGGCCCCGCTGCACTACCGCCACTCCGCGCAGCCCTGGGCCGACTTCAC
GCTGCTGGGCGCCCGCGCCCCGGCACCTACAGCTGCTACTATCACAGCCCTCCGCGCCCTACGTGCTG
TCGCAGCGCAGCGAGGTGCTGGTCATCAGCTGGGAAGACTCTGGCTCCTCCGACTACACCCGGGGGAACC
TAGTCCGCTGGGGCTGGCCGGGCTGGTCTCATCTCCCTGGGCGCGTGGTCACTTTTACTGGCGCAG
TCAGAACC**CGCTCCTGCTGGTATCCGCCC**

ACGCGTACGCGGCCGCTCGAGCAGAACTCATCTCAGAAGAGGATCTGGCAGCAAATGATATCTGGATT
ACAAGGATGACGACGATAAGGTTTAA



[View online »](#)

Protein Sequence: >RC221675 representing NM_130771
 Red=Cloning site Green=Tags(s)

MALVLIQLLLWPLCHTDITPSVAIIVPPASYHPKPWLGAQPATVVTGPNVTLRCRAPQPAWRFGFLFK
 PGEIAPLLFRDVSSLEAEFFLEEVTPAQGGIYRCCYRRPDWGPVWSQPSDVLELLVTEELPRPSLVALP
 GPVVGPGANVSLRCAGRLRNMSFVLYREGVAAPLQYRHSAPWADFTLLGARAPGTYSYHTPSAPYVL
 SQRSEVLVISWEDSGSSDYTRGNLVRLGLAGLVLISLGALVTFDWRSQNRAPAGIRP

TRTRPLEQKLISEEDLAANDILDYKDDDDKV

Chromatograms: https://cdn.origene.com/chromatograms/mk8048_b05.zip

Restriction Sites: SgfI-MluI

Cloning Scheme:



ACCN: NM_130771

ORF Size: 801 bp

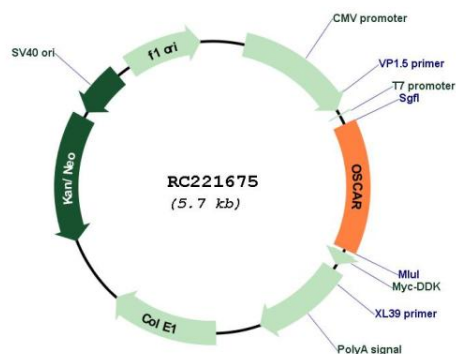
OTI Disclaimer: Due to the inherent nature of this plasmid, standard methods to replicate additional amounts of DNA in E. coli are highly likely to result in mutations and/or rearrangements. Therefore, OriGene does not guarantee the capability to replicate this plasmid DNA. Additional amounts of DNA can be purchased from OriGene with batch-specific, full-sequence verification at a reduced cost. Please contact our customer care team at custsupport@origene.com or by calling 301.340.3188 option 3 for pricing and delivery.

The molecular sequence of this clone aligns with the gene accession number as a point of reference only. However, individual transcript sequences of the same gene can differ through naturally occurring variations (e.g. polymorphisms), each with its own valid existence. This clone is substantially in agreement with the reference, but a complete review of all prevailing variants is recommended prior to use. [More info](#)

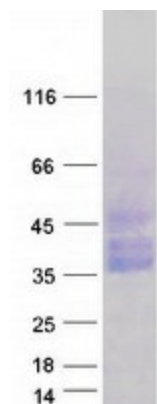
OTI Annotation: This clone was engineered to express the complete ORF with an expression tag. Expression varies depending on the nature of the gene.

Components:	The ORF clone is ion-exchange column purified and shipped in a 2D barcoded Matrix tube containing 10ug of transfection-ready, dried plasmid DNA (reconstitute with 100 ul of water).
Reconstitution Method:	<ol style="list-style-type: none"> 1. Centrifuge at 5,000xg for 5min. 2. Carefully open the tube and add 100ul of sterile water to dissolve the DNA. 3. Close the tube and incubate for 10 minutes at room temperature. 4. Briefly vortex the tube and then do a quick spin (less than 5000xg) to concentrate the liquid at the bottom. 5. Store the suspended plasmid at -20°C. The DNA is stable for at least one year from date of shipping when stored at -20°C.
Note:	Plasmids are not sterile. For experiments where strict sterility is required, filtration with 0.22um filter is required.
RefSeq:	<u>NM_130771.3</u>
RefSeq Size:	1440 bp
RefSeq ORF:	804 bp
Locus ID:	126014
UniProt ID:	<u>Q8IYS5</u>
Cytogenetics:	19q13.42
Protein Families:	Druggable Genome
MW:	29 kDa
Gene Summary:	Osteoclasts are multinucleated cells that resorb bone and are essential for bone homeostasis. This gene encodes an osteoclast-associated receptor (OSCAR), which is a member of the leukocyte receptor complex protein family that plays critical roles in the regulation of both innate and adaptive immune responses. The encoded protein may play a role in oxidative stress-mediated atherogenesis as well as monocyte adhesion. Multiple alternatively spliced transcript variants encoding different isoforms have been found for this gene. [provided by RefSeq, Aug 2013]

Product images:



Circular map for RC221675



Coomassie blue staining of purified OSCAR protein (Cat# [TP321675]). The protein was produced from HEK293T cells transfected with OSCAR cDNA clone (Cat# RC221675) using MegaTran 2.0 (Cat# [TT210002]).