

## Product datasheet for RC221674

### BID (NM\_197967) Human Tagged ORF Clone

#### Product data:

**Product Type:** Expression Plasmids  
**Product Name:** BID (NM\_197967) Human Tagged ORF Clone  
**Tag:** Myc-DDK  
**Symbol:** BID  
**Synonyms:** FP497  
**Mammalian Cell Selection:** Neomycin  
**Vector:** pCMV6-Entry (PS100001)  
**E. coli Selection:** Kanamycin (25 ug/mL)  
**ORF Nucleotide Sequence:** >RC221674 representing NM\_197967  
Red=Cloning site Blue=ORF Green=Tags(s)

TTTTGTAAATACGACTCACTATAGGGCGGCCGGAATTCGTCGACTGGATCCGGTACCGAGGAGATCTGCC  
 GCCCGATCGCC

ATGGACCGTAGCATCCCTCCGGGCTGGTGAACGGCCTGGCCCTGCAGCTCAGGAACACCAGCCGGTCGG  
 AGGAGGACCGGAACAGGGACCTGGCCACTGCCCTGGAGCAGCTGCTGCAGGCCTACCCTAGAGACATGGA  
 GAAGGAGAAGACCATGCTGGTGTGGCCCTGCTGCTGGCCAAGAAGGTGGCCAGTCACACGCCGTCCTTG  
 CTCCGTGATGTCTTTCACACAACAGTGAATTTTATTAACCAGAACCTACGCACCTACGTGAGGAGCTTAG  
 CCAGAAATGGGATGGAC

ACGCGTACGCGGCCGCTCGAGCAGAAACTCATCTCAGAAGAGGATCTGGCAGCAAATGATATCCTGGATT  
 ACAAGGATGACGACGATAAGGTTTAA

**Protein Sequence:** >RC221674 representing NM\_197967  
Red=Cloning site Green=Tags(s)

MDRSIPPGLVNGLALQLRNTSRSEEDRNRDLATALEQLLQAYPRDMEKEKTMLVLALLAKKVASHTPSL  
 LRDVFHTTVNFINQLRTYVRSRLARNGMD

TRTRPLEEQKLISEEDLAANDILDYKDDDDKV

**Restriction Sites:** SgfI-MluI


[View online »](#)

## Cloning Scheme:



ACCN: NM\_197967

ORF Size: 297 bp

OTI Disclaimer: Due to the inherent nature of this plasmid, standard methods to replicate additional amounts of DNA in E. coli are highly likely to result in mutations and/or rearrangements. Therefore, OriGene does not guarantee the capability to replicate this plasmid DNA. Additional amounts of DNA can be purchased from OriGene with batch-specific, full-sequence verification at a reduced cost. Please contact our customer care team at [custsupport@origene.com](mailto:custsupport@origene.com) or by calling 301.340.3188 option 3 for pricing and delivery.

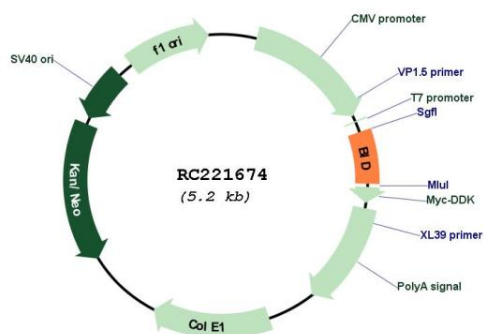
The molecular sequence of this clone aligns with the gene accession number as a point of reference only. However, individual transcript sequences of the same gene can differ through naturally occurring variations (e.g. polymorphisms), each with its own valid existence. This clone is substantially in agreement with the reference, but a complete review of all prevailing variants is recommended prior to use. [More info](#)

OTI Annotation: This clone was engineered to express the complete ORF with an expression tag. Expression varies depending on the nature of the gene.

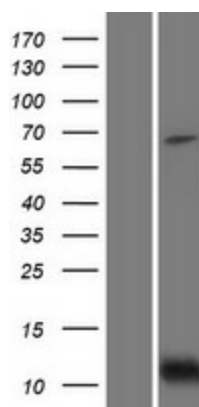
Components: The ORF clone is ion-exchange column purified and shipped in a 2D barcoded Matrix tube containing 10ug of transfection-ready, dried plasmid DNA (reconstitute with 100 ul of water).

|                               |   |
|-------------------------------|---|
| <b>Reconstitution Method:</b> | <ol style="list-style-type: none"> <li>1. Centrifuge at 5,000xg for 5min.</li> <li>2. Carefully open the tube and add 100ul of sterile water to dissolve the DNA.</li> <li>3. Close the tube and incubate for 10 minutes at room temperature.</li> <li>4. Briefly vortex the tube and then do a quick spin (less than 5000xg) to concentrate the liquid at the bottom.</li> <li>5. Store the suspended plasmid at -20°C. The DNA is stable for at least one year from date of shipping when stored at -20°C.</li> </ol>     |
| <b>Note:</b>                  | Plasmids are not sterile. For experiments where strict sterility is required, filtration with 0.22um filter is required.  |
| <b>RefSeq:</b>                | <u>NM_197967.2</u>  |
| <b>RefSeq Size:</b>           | 2144 bp   |
| <b>RefSeq ORF:</b>            | 300 bp  |
| <b>Locus ID:</b>              | 637   |
| <b>UniProt ID:</b>            | <u>P55957</u>   |
| <b>Cytogenetics:</b>          | 22q11.21  |
| <b>Protein Families:</b>      | Druggable Genome  |
| <b>Protein Pathways:</b>      | Alzheimer's disease, Amyotrophic lateral sclerosis (ALS), Apoptosis, Natural killer cell mediated cytotoxicity, p53 signaling pathway, Pathways in cancer, Viral myocarditis  |
| <b>MW:</b>                    | 11.1 kDa  |
| <b>Gene Summary:</b>          | This gene encodes a death agonist that heterodimerizes with either agonist BAX or antagonist BCL2, and thus regulate apoptosis. The encoded protein is a member of the BCL-2 family of cell death regulators. It is a mediator of mitochondrial damage induced by caspase-8 (CASP8); CASP8 cleaves this encoded protein, and the COOH-terminal part translocates to mitochondria where it triggers cytochrome c release. Multiple alternatively spliced transcript variants have been found. [provided by RefSeq, Aug 2020] |

## Product images:



Circular map for RC221674



Western blot validation of overexpression lysate (Cat# [LY405092]) using anti-DDK antibody (Cat# [TA50011-100]). Left: Cell lysates from untransfected HEK293T cells; Right: Cell lysates from HEK293T cells transfected with RC221674 using transfection reagent MegaTran 2.0 (Cat# [TT210002]).