

Product datasheet for **RC221663**

EPB41L4A (NM_022140) Human Tagged ORF Clone

Product data:

Product Type:	Expression Plasmids
Product Name:	EPB41L4A (NM_022140) Human Tagged ORF Clone
Tag:	Myc-DDK
Symbol:	EPB41L4A
Synonyms:	EPB41L4; NBL4
Mammalian Cell Selection:	Neomycin
Vector:	pCMV6-Entry (PS100001)
E. coli Selection:	Kanamycin (25 ug/mL)



[View online »](#)

**ORF Nucleotide
Sequence:**

>RC221663 representing NM_022140
 Red=Cloning site Blue=ORF Green=Tags(s)

TTTTGTAATACGACTCACTATAGGGCGGCCGGAATTCGTCGACTGGATCCGGTACCGAGGAGATCTGCC
 GCC**CGGATCGCC**

ATGGGCTGTTTCTGCGCTGTTCCGGAAGAATTTTACTGCGAAGTTTGTCTCTGGATGAATCCAAGTTAA
 CCCTTACCACCCAGCAGCAGGGCATCAAGAAGTCAACGAAAGTTCCGTTGTCTTGACCACGTATTCCA
 TCACGTA AACCTTGTGGAGATAGATTATTTGGGCTACGTTACTGTGACAGAAGCCATCAGACGTATTGG
 CTGGATCTGCAAAAACCTTGCTGAACACAAAGAACTGATCAACACTGGACCTCCATATACTTTGTATT
 TTGGTATTAATCTATGCTGAAGATCCATGTAACTTAAAGAAGAAATAACCAGATATCAGTTTTTCTT
 GCAGGTGAAGCAAGATGCTCTCAGGGCCGTCTGCCCTGTCCCGTCAACACTGCTGCTCAGCTGGGAGCG
 TATGCCATCCAGTCGGAGCTTGAGATTATGACCCATATAACATACTGCAGGATATGTATCTGAGTACC
 GGTGTTGTTCTGATCAGAAGGAAGAACTTGAAGAAGCCATAGAAAGGATTCATAAACTCTAATGGGTCA
 GATTCTTCTGAGGCTGAGCTGAATTACTTGAGGACTGCCAAATCCCTGGAGATGTATGGCGTTGACCTC
 CATCCCGTCTATGGAGAAAACAAGTCTGAGTATTTCTTAGGATTAACCTCCGGTTGGTGTGTGTGTACA
 AGAATAAAAAGCAAGTGGGGAAGTATTTCTGGCCTCGGATTACAAAGGTTCACTTCAAGGAGACTCAATT
 TGAAGTCAGAGTACTGGGAAAAGATTGTAAACGAAACCTCATTCTTTTTGAAGCTCGGAGTAAAAGTCT
 TGCAAGCACCTCTGGAAGTGCAGTGTGGAACATCATACATTTTTTAGAATGCCAGAAAAATGAATCCAATT
 CACTGTCAAGAAAACCTCAGCAAGTTTGGATCCATACGTTATAAGCACCGCTACAGTGGCAGGACAGCTTT
 GCAATGAGCCGAGATCTTTCTATTAGCTTCCCGGCCCTGATCAGAATGTGACAAGAAGTCGAAGCAAG
 ACTTACCCTAAGCGAATAGCACAAACACAGCCAGCTGAATCAAACAGCATCAGTAGGATAACTGCAAAACA
 TGGAAAATGGAGAAAATGAAGGAACAATTAATAATTATTGCACCTTCACCAGTAAAAAGCTTTAAGAAAGC
 AAAGAATGAAAAATAGCCCTGATACCCAAAGAAGCAAAATCTCATGCACCGTGGGAAGAAAAATGGCCCCCAG
 AGTGGACTCTACAATTCTCCAGTGATCGCACTAAGTCGCCAAAGTTCCCTTACACGCGTCGCCGAAACC
 CCTCCTGTGGAAGTGACAATGATTCTGTACAGCCTGTGAGGAGGAGGAAAGCCATAACAGTGGTGAAGA
 TTCAGATCTTAAGCAAAGGAGGAGGTACGTTACGCTGTAAACACCAGCAGTGGTAGTGAATCAGAAAAAT
 TCTAATAGAGAATACCGGAAAAAGAGAAACAGAATACGGCAGGAGAATGATATGGTTGATTCAGCGCCTC
 AGTGGGAAGCTGTATTAAGGAGACAAAAGGAAAAAAACCAAGCCGACCCCAACAACAGGCGATCCAGACA
 CAGATCTCGTTTCGAGAAGCCCCGATATCCAAGCAAAAGAAGATTATGGAAGCACATTCAAAAAGAACTT
 GTGGATCCATCCGATTGTCCGAAGAACAATTAAGAGATTCCATACACTAAAAATAGAGACACAAGGTG
 ACCCAATCCGCATCAGGCATTCTCATTGCCACGAAGTTACCGCCAGTATCGCAGGTCCCAGTGTTGAGA
 TGGGGAGCGATCAGTTCTCTCGGAAGTGAATTCAAAAACAGATCTTGTAACCACTTCCCGTGACCCAT
 TCTTCGGATGCTCAGGGTCTGGGGATGCTACAGTTTCATCAGAGAAGAAATGGGTCTAAAGATAGCCTGA
 TGGAAGAAAAACCTCAGACATCTACAAACAACCTGGCTGGAAAACACACAGCAAAAAACAATAAACTAT
 ACAAGCTTCCCGCTCAAGACAGAGACT

AG**CGGACCG**ACGCGTACGCGGCCGCTCGAGCAGAACTCATCTCAGAAGAGGATCTGGCAGCAATGATATCC
 TGGATTACAAGGATGACGACGATAAGGTTTAA

Protein Sequence: >RC221663 representing NM_022140
 Red=Cloning site Green=Tags(s)

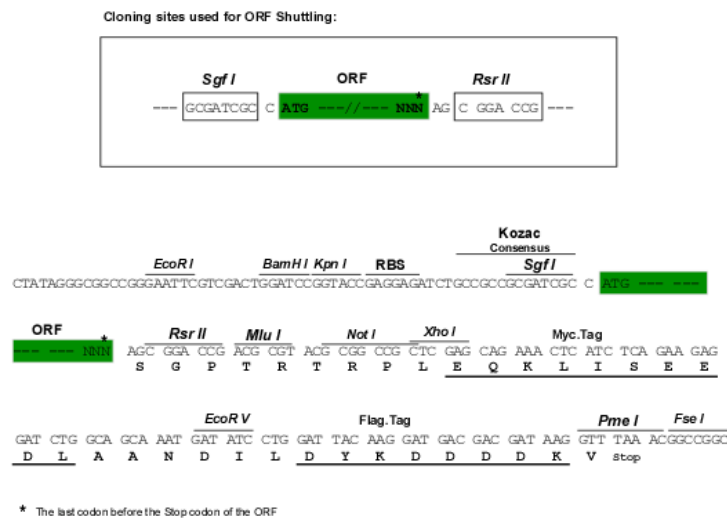
MGCFCAVPEEFYCEVLLLDSEKLTLTQQGGIKKSTKGSVVLDFVHHVNLVEIDYFGLRYCDRSHQTYW
 LDPAKTLAEHKELINTGPPYTLYFGIKFYAEDPCKLKEETRYQFFLQVKQDVLQGRPCPVNTAAQLGA
 YAIQSELGDYDPYKHTAGYVSEYRFVPDQKEELEAIERIHKTLMGQIPSEAELNYLRTAKSLEMYGVDL
 HPVYGENKSEYFLGLTPVGVVVYKNKKQVGKYFWPRITKVHFKETQFELRVLGKDCNETSFFFEARSKTA
 CKHLWKCSVEHHTFFRMPENESNLSRKLSKFGSIRYKHRYSGRTALQMSRDLSIQLPRPDQNVTRSRK
 TYPKRIAQTQPAESNSISRITANMENGEGTIKIIAPSPVKSFKKAKNENSPDTQRSKSHAPWEENGPO
 SGLYNPSDRTKSPKFPYTRRRNPSCGSDNDSVQPVRRRAHNSGEDSDLKQRRRSRRCNTSSGSESEN
 SNREYRKRRNRIQENDMVDAPQWEAVLRRQKEKNQADPNRRSRHRSRSPDIQAKEELWKHIQKEL
 VDPSGLSEEQLKEIPYTKIETQGDPIRIRHSHSPRSYRQYRRSQCSGERSVLSEVNSKTDLPPLPVTH
 SSDAQSGDATVHQRRNGSKDSLMEKPQTSTNNLAGKHTAKTIKTIQASRLKTET

SGPTRRRLEQKLISEEDLAANDILDYKDDDDKV

Chromatograms: https://cdn.origene.com/chromatograms/mk8039_h12.zip

Restriction Sites: SgfI-RsrII

Cloning Scheme:



ACCN: NM_022140

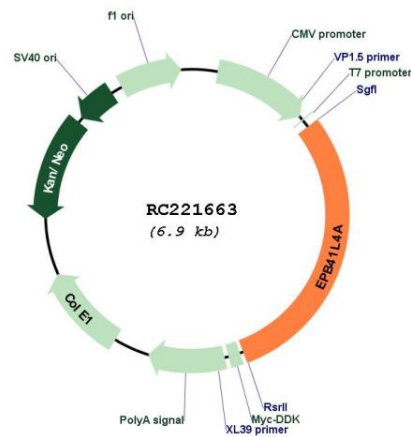
ORF Size: 2058 bp

OTI Disclaimer: The molecular sequence of this clone aligns with the gene accession number as a point of reference only. However, individual transcript sequences of the same gene can differ through naturally occurring variations (e.g. polymorphisms), each with its own valid existence. This clone is substantially in agreement with the reference, but a complete review of all prevailing variants is recommended prior to use. [More info](#)

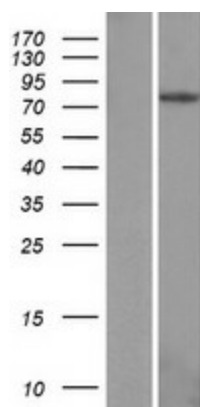
OTI Annotation: This clone was engineered to express the complete ORF with an expression tag. Expression varies depending on the nature of the gene.

Components:	The ORF clone is ion-exchange column purified and shipped in a 2D barcoded Matrix tube containing 10ug of transfection-ready, dried plasmid DNA (reconstitute with 100 ul of water).
Reconstitution Method:	<ol style="list-style-type: none"> 1. Centrifuge at 5,000xg for 5min. 2. Carefully open the tube and add 100ul of sterile water to dissolve the DNA. 3. Close the tube and incubate for 10 minutes at room temperature. 4. Briefly vortex the tube and then do a quick spin (less than 5000xg) to concentrate the liquid at the bottom. 5. Store the suspended plasmid at -20°C. The DNA is stable for at least one year from date of shipping when stored at -20°C.
RefSeq:	<u>NM_022140.3, NP_071423.3</u>
RefSeq Size:	4707 bp
RefSeq ORF:	2061 bp
Locus ID:	64097
UniProt ID:	<u>Q9HCS5</u>
Cytogenetics:	5q22.1-q22.2
Domains:	B41
MW:	78.9 kDa
Gene Summary:	The protein encoded by this gene is a member of the band 4.1 protein superfamily. Members of this superfamily are thought to play an important role in regulating interactions between the cytoskeleton and plasma membrane, and contain an amino terminal conserved domain that binds glycoporphin C. This gene product is thought to be involved in the beta-catenin signaling pathway. [provided by RefSeq, Dec 2016]

Product images:



Circular map for RC221663



Western blot validation of overexpression lysate (Cat# [LY411745]) using anti-DDK antibody (Cat# [TA50011-100]). Left: Cell lysates from untransfected HEK293T cells; Right: Cell lysates from HEK293T cells transfected with RC221663 using transfection reagent MegaTran 2.0 (Cat# [TT210002]).