

Product datasheet for RC221654

BROX (NM_144695) Human Tagged ORF Clone

Product data:

| | |
|---------------------------|---|
| Product Type: | Expression Plasmids |
| Product Name: | BROX (NM_144695) Human Tagged ORF Clone |
| Tag: | Myc-DDK |
| Symbol: | BROX |
| Synonyms: | C1orf58 |
| Mammalian Cell Selection: | Neomycin |
| Vector: | pCMV6-Entry (PS100001) |
| E. coli Selection: | Kanamycin (25 ug/mL) |
| ORF Nucleotide Sequence: | >RC221654 ORF sequence Red=Cloning site Blue=ORF Green=Tags(s) |

TTTTGTAATACGACTCACTATAGGGCGGCCGGAATTCGTCGACTGGATCCGGTACCGAGGAGATCTGCC
GCC**CGATCGCC**

ATGACCCATTGGTTTCATAGGAACCCATTAAGCCACAGCTCCTGTGTCTTTAATTACTATGGTGTAG
TCACTGGCCCTTCTGCTCAAAAATATGCAATGACTTGAGGTCATCCAGGGCAGGACTCCTTGAAGTGT
CACTGATTTGAGCTGTAATCCAGAAATGATGAAGAATGCAGCAGATTCATATTTCTCACTTTACAAGT
TTCATAAATCTTTGGATGAATCTACCCAAGAAAGCAAGTTACGATATATCAAAATTTCAAGTGGACTG
ATACATTGCAAGGACAGGTTCCAAGTGCCAGCAGGATGCTGTTTTGAATTAATTTCCATGGGATTTAA
TGTAGCTTTATGGTATACCAAATATGCTTCAAGACTGGCTGGAAAAGAAAATATAACAGAAGATGAAGCA
AAAGAAGTTCATCGAAGCCTAAAGATTGCACTGGGATTTTTAAACATTTAAAGGAAAGTCATCTCCAA
AACTCATTACACCTGCGGAAAAAGGAAGAGATTAGAGTCACGACTCATAGAAGCATACGTTATTCAATG
TCAGGCTGAAGCTCAAGAAGTAACAATTGCTCGAGCAATTGAACTAAAACATGCTCCTGGACTAATTGCT
GCACTGGCGTATGAAACAGCCAATTTCTATCAAAAAGCTGATCATACTTTATCCAGTTTGGAGCCTGCAT
ATTCTGCCAAATGGAGAAAATATCTTCACTTGAAGATGTGTTTCTACACAGCTTATGCTTACTGTTACCA
TGGTGAGACTTTATTGGCTAGTGATAAATGCGGTGAAGCAATCAGGTCTCTCCAAGAAGCAGAAAAATTG
TATGCAAAGGCAGAAGCACTGTGTAAGAATATGGAGAAACCAAGGACCTGGACCAACAGTCAAACCTT
CAGGACATCTGTTCTTTAGGAAACTTGGAAACCTTGTGAAGAACCCTAGAAAAATGTCAGAGAGAAAA
TGGATTTATTTACTTTCAAAAAATTTCCAACAGAAGCCCCACAGCTGGAACCTCAAAGCAAATTATGGTCTC
GTAGAGCCTATACCTTTGCAATTTCTCTACAAGTGTTCAGTGGACACCAGAAACATTGGCTGCATTTG
ATCTCACAAAAGACCAAGGATGACAGTACTAAACCAACCAGAAAGAAGTAAACCTGTGAAAGA
ACCAGACATCAAACCTCAAAGGACACTGGGTGCTACATCTCC

ACGCGTACGCGGCCGCTCGAGCAGAAACTCATCTCAGAAGAGGATCTGGCAGCAAATGATATCTGGATT
ACAAGGATGACGACGATAAGGTTTAA



[View online >](#)

Protein Sequence: >RC221654 protein sequence
Red=Cloning site Green=Tags(s)

MTHWHRNPLKATAPVSFNYYGVVTGPSASKICNDLRSSRARLLELFTDLSCNPEMMKNAADSYFSLQGF
 FINSLDESTQESKLRVIQNFKWTDTLQGQVPSAQDQAVFELISMGFNVALWYTKYASRLAGKENITEDEA
 KEVHRSLKIAAGIFKHLKESHLPKLITPAEKGRDLESRLIEAYVIQCQAEAEQVETIARAIELKHAPGLIA
 ALAYETANFYQKADHTLSSLEPAYSARKWRYLHLKMCIFYTAYACYHGETLLASDKCGEAIKRLQAEKLL
 YAKAEALCKEYGETKGPPTVKPSPGHLFFRKLGNLVKNTLEKCCQRENGFIYFQKIPTAPQLELKANYGL
 VEPPIPFEPPTSQWTPETLAADFDTKRPKDDSTKPKPEEEVKPVKEPDIKPQKDTGCYIS

TRTRPLEQKLISEEDLAANDILDYKDDDDKV

Chromatograms: https://cdn.origene.com/chromatograms/mk6462_e05.zip

Restriction Sites: SgfI-MluI

Cloning Scheme:



* The last codon before the Stop codon of the ORF

ACCN: NM_144695

ORF Size: 1233 bp

OTI Disclaimer: The molecular sequence of this clone aligns with the gene accession number as a point of reference only. However, individual transcript sequences of the same gene can differ through naturally occurring variations (e.g. polymorphisms), each with its own valid existence. This clone is substantially in agreement with the reference, but a complete review of all prevailing variants is recommended prior to use. [More info](#)

OTI Annotation: This clone was engineered to express the complete ORF with an expression tag. Expression varies depending on the nature of the gene.

Components: The ORF clone is ion-exchange column purified and shipped in a 2D barcoded Matrix tube containing 10ug of transfection-ready, dried plasmid DNA (reconstitute with 100 ul of water).

- Reconstitution Method:**
1. Centrifuge at 5,000xg for 5min.
 2. Carefully open the tube and add 100ul of sterile water to dissolve the DNA.
 3. Close the tube and incubate for 10 minutes at room temperature.
 4. Briefly vortex the tube and then do a quick spin (less than 5000xg) to concentrate the liquid at the bottom.
 5. Store the suspended plasmid at -20°C. The DNA is stable for at least one year from date of shipping when stored at -20°C.

RefSeq: [NM_144695.4](#)

RefSeq Size: 4124 bp

RefSeq ORF: 1236 bp

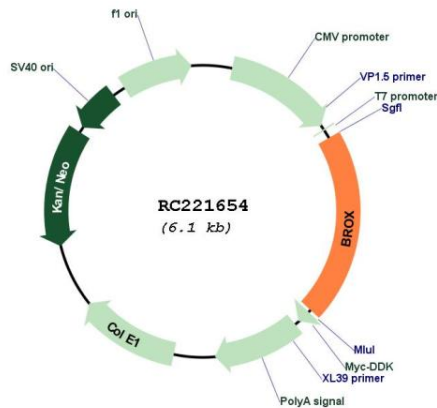
Locus ID: 148362

UniProt ID: [Q5VW32](#)

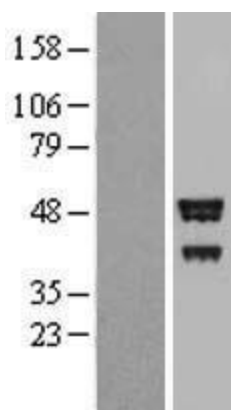
Cytogenetics: 1q41

MW: 46.5 kDa

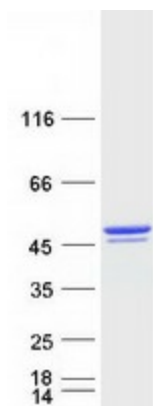
Product images:



Circular map for RC221654



Western blot validation of overexpression lysate (Cat# [LY408176]) using anti-DDK antibody (Cat# [TA50011-100]). Left: Cell lysates from untransfected HEK293T cells; Right: Cell lysates from HEK293T cells transfected with RC221654 using transfection reagent MegaTran 2.0 (Cat# [TT210002]).



Coomassie blue staining of purified BROX protein (Cat# [TP321654]). The protein was produced from HEK293T cells transfected with BROX cDNA clone (Cat# RC221654) using MegaTran 2.0 (Cat# [TT210002]).