

Product datasheet for **RC221630**

SLC41A3 (NM_001008486) Human Tagged ORF Clone

Product data:

Product Type:	Expression Plasmids
Product Name:	SLC41A3 (NM_001008486) Human Tagged ORF Clone
Tag:	Myc-DDK
Symbol:	SLC41A3
Synonyms:	SLC41A1-L2
Mammalian Cell Selection:	Neomycin
Vector:	pCMV6-Entry (PS100001)
E. coli Selection:	Kanamycin (25 ug/mL)



[View online »](#)

ORF Nucleotide Sequence:

>RC221630 representing NM_001008486
 Red=Cloning site Blue=ORF Green=Tags(s)

TTTTGTAATACGACTCACTATAGGGCGGCCGGAATTCGTCGACTGGATCCGGTACCGAGGAGATCTGCC
 GCC**CGGATCGCC**

ATGGATGGGACAGAGACCCGGCAGCGGAGGCTGGACAGCTGTGGCAAGCCAGGGGAGCTGGGGCTTCTCT
 ACCCCCTCAGCACAGGAGGACTCCCTGTAGCCTCAGAAGATGGAGCTCTCAGGGCCCTGAGAGCCAAAG
 CGTGACCCCAAGCCACTGGAGACTGAGCCTAGCAGGGAGACCGCTGGTCCATAGGCCCTTCAGGTGACC
 GTGCCCTTCATGTTTGCAGGCCTGGGACTGTCTGGGCCGGCATGCTTCTGGACTATTTCCAGGCCAAACA
 CTGGACAAATTGATGACCCCAAGGAGCAGCACAGAGTCACTCAGCAGCAACCTGGCCCTCATCCAGGTGCA
 GGCCACTGTCGTGGGGCTCTGGCTGCTGTGGCTGCGCTGCTGTTGGCGTGGTGTCTCGAGAGGAAGTG
 GATGTCGCCAAGGTGGAGTTGCTGTGTGCCAGCAGTGCCTCACTGCCTTCTTGCAGCCTTTGCCCTGG
 GGGTGTGATGGTCTGTATAGTATTGGTGTCTGAAAGCTCGGGGTCAACCCAGACAACATTGCCACGCC
 CATTGCAGCCAGCCTGGGAGACCTCATCACTGTCCATTCTGGCTTTGGTTAGCAGCTTCTTACAGA
 CACAAAGATAGTCGGTATCTGACCCGCTGGTCTGCCTCAGCTTTCGGCTCTGACCCAGTGTGGGTCC
 TCATTGCCAAGCAGAGCCACCCATCGTGAAGATCCTGAAGTTTGGCTGGTTCCCAATCATCCTGGCCAT
 GGTCACTCAGCAGTTTCGGAGGACTCATCTTGAGCAAAACCGTTTCTAAACAGCAGTACAAAGGCATGGCG
 ATATTTACCCCGTCATATGTGGTGTGGTGGCAATCTGGTGGCCATTGACACCAGCCGAATCTCAACCT
 ACCTGCACATGTGGAGTGCACCTGGCGTCTGCCCTCCAGATGAAGAAATCTGGCCCAACCCGTGTTCT
 TACTTTCTGCACGTCAGAAATCAATCCATGTCAGCTCGAGTCTGCTCTTGCTGGTGGTCCCAGGCCAT
 CTGATTTTCTTACATCATCTACCTGGTGGAGGGTCAAGTCAATCCTGCTGACCTGCAGAAAGTGGTTCGGTGC
 TCTACCTGTGGCAGGCCTGATCCAGGTGACAATCCTGCTGACCTGCAGAAAGTGGTTCGGTGCAGTGC
 TTGGCACCCAGCCCTGGATCCTGACAACCACTGCATCCCTACCTTACAGGGCTGGGGGACCTGCTCGGT
 TCAAGCTCCGTGGGCCACACTGTGCTGTGCCAAGAAGGTGTACAGCCTCCCAGGATGGGGCTCATA
 AACCTTCATCTGCACTCAACATTTAATCGTGTCTTGTCTTTTTATTTTCTTTTTGTTTGTAGC
 AAAAACCTCTATT

ACGCGTACGCGGCCGCTCGAGCAGAAACTCATCTCAGAAGAGGATCTGGCAGCAATGATATCCTGGATT
 ACAAGGATGACGACGATAAGGTTTAA

Protein Sequence:

>RC221630 representing NM_001008486
 Red=Cloning site Green=Tags(s)

MDGTETRQRRLDSCGKPGELGLPHPLSTGGLPVASEDGALRAPESQSVTPKPLETEPSRETAWSIGLQVT
 VPFMFAGLGLSWAGMLLDYFQANTGQIDDPQEQHRVISSNLALIQVQATVVGLLAAVAALLLVVSREEV
 DVAKVELLCASSVLTAFLLAALFALGVLVCIVIGARKLGVNPDNIATPIAASLGDITLSILALVSSFFYR
 HKDSRYLTPLVCLSFALTPVWVLIKQSPPIVKILKFWFPIILAMVISSFGLILSKTVSKQYKGM
 IFTPVICGVGGNLVAIQTSRISTYLHMWSAPGVLPLQMKKFWPNPCSTFCTSEINSMSARVLLLLVVP
 GH
 LIFFYIIYLVEGQSVINSQTFVVLVLLAGLIQVTILLYLAEMVRLTWHQALDPDNHCIPYLTGLD
 LLLG
 SSSVGHAAVPRRCTASPGWLIQPFICTQHLIVSLLSFYFPFLLAKTSI

TRTRPLEQKLISEEDLAANDILDYKDDDDKV

Chromatograms:

https://cdn.origene.com/chromatograms/mk8062_b07.zip

Restriction Sites:

Sgfl-MluI

Cloning Scheme:



ACCN: NM_001008486

ORF Size: 1413 bp

OTI Disclaimer: The molecular sequence of this clone aligns with the gene accession number as a point of reference only. However, individual transcript sequences of the same gene can differ through naturally occurring variations (e.g. polymorphisms), each with its own valid existence. This clone is substantially in agreement with the reference, but a complete review of all prevailing variants is recommended prior to use. [More info](#)

OTI Annotation: This clone was engineered to express the complete ORF with an expression tag. Expression varies depending on the nature of the gene.

Components: The ORF clone is ion-exchange column purified and shipped in a 2D barcoded Matrix tube containing 10ug of transfection-ready, dried plasmid DNA (reconstitute with 100 ul of water).

Reconstitution Method:

1. Centrifuge at 5,000xg for 5min.
2. Carefully open the tube and add 100ul of sterile water to dissolve the DNA.
3. Close the tube and incubate for 10 minutes at room temperature.
4. Briefly vortex the tube and then do a quick spin (less than 5000xg) to concentrate the liquid at the bottom.
5. Store the suspended plasmid at -20°C. The DNA is stable for at least one year from date of shipping when stored at -20°C.

RefSeq: [NM_001008486.1](#), [NP_001008486.1](#)

RefSeq Size: 1698 bp

RefSeq ORF: 1416 bp

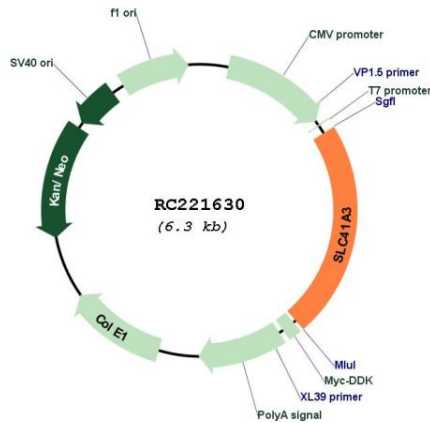
Locus ID: 54946

UniProt ID: [Q96GZ6](#)

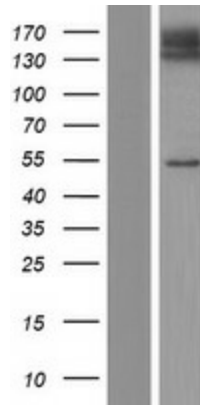
Cytogenetics: 3q21.2-q21.3

Protein Families: Transmembrane
 MW: 50.6 kDa

Product images:



Circular map for RC221630



Western blot validation of overexpression lysate (Cat# [LY423434]) using anti-DDK antibody (Cat# [TA50011-100]). Left: Cell lysates from untransfected HEK293T cells; Right: Cell lysates from HEK293T cells transfected with RC221630 using transfection reagent MegaTran 2.0 (Cat# [TT210002]).