

Product datasheet for RC221621

LAF4 (AFF3) (NM_002285) Human Tagged ORF Clone

Product data:

Product Type:	Expression Plasmids
Product Name:	LAF4 (AFF3) (NM_002285) Human Tagged ORF Clone
Tag:	Myc-DDK
Symbol:	AFF3
Synonyms:	KINS; LAF4; MLLT2-like
Mammalian Cell Selection:	Neomycin
Vector:	pCMV6-Entry (PS100001)
E. coli Selection:	Kanamycin (25 ug/mL)
ORF Nucleotide Sequence:	>RC221621 representing NM_002285 Red=Cloning site Blue=ORF Green=Tags(s)

TTTTGTAATACGACTCACTATAGGGCGGCCGGAATTCGTCGACTGGATCCGGTACCGAGGAGATCTGCC
GCCCGGATCGCC

ATGGACAGCTTCGACTTAGCCCTGCTCCAGGAATGGGACCTCGAGTCACTGTGTGTCTATGAACCAGATA
GAAATGCATTACGGAGGAAAGAACGAGAAAGAAGAAATCAAGAACTCAACAGGATGATGGCACGTTTAA
TTCTAGTTACTCTCTCTCAGTGAGCCCTACAAGACTACAAGGGGGATGAACTCTCAACCGGATCCAG
AACACTTAGGCAATTATGATGAAATGAAAGACTTTTTAACTGATAGATCCAATCAGAGTCATCTCGTTG
GAGTTCCCAAACCTGGGTTCTCAGACTCCTGTGAACAAGATCGATGAACATTTTGTTCAGATCAAG
AGCCCAGAACCAGCCCTCGTCTATCTGTAGCACTACAACCTCCACACCAGCAGCTGTCCCGTGCAGCAG
AGTAAGAGAGGCACTATGGGCTGGCAGAAGGCTGGGCACCCACCTCTGACGGCCAAACAGAGAGCAACAC
AACAGGGCTCTCTCAGGACCTTGCTTGGAGATGGTGTGGCAGACAGCAGCCTCGGGCCAAACAAGTGTG
CAATGTGGAGGTGGGCTTCAGACCCAGGAGAGGCCACCTGCCATGGCGGCCAAGCACAGCAGCAGCGGA
CACTGTGTTTCAAGACTTTCTCCATCCCTAGCTTCAAACCCAGCCTGGTCCAGCAGAAACCGACCGGT
ATGTGAGGCCAATGGACGGCCAAGATCAGGCCCTGATGAGTCTCCTAAGCTGAAGTCGTCTTCGGAAAC
CAGCGTGCAGTGCACATCATAAGGGGAGTCCCTGCCAGCAAGCCGAGCCTGCCAGAGCCAAGGCCAAG
CTCTCAAAGTTCAGCATCCCCAAGCAGGGGAGGAGAGTAGATCTGGAGAAACCAACAGCTGTGTTGAAG
AAATAATCCGGGAGATGACCTGGCTTCCACCCTTTCTGCTATTCAAGCACCTGGCAAAGTGGAAACCAAC
CAAATTTCCATTTCCAAATAAGGACTCTCAGCTTGATCCTCTGGACACAATAATCCAAAGAAAGGTGAT
GCAGAGCCAGAGAGTCCAGACAATGGCAGATCGAATACATCAATGCTGGAAGATGACCTTAAGCTAAGCA
GTGATGAAGAGGAGAATGAACAGCAGGCAGCTCAGAGAACGGCTCTCCGCGCTCTCTGACAGCGCCGT
GGTCCAGCAGCCCAACTGCAGAACCTCGGTGCCTTCCAGCAAGGGCAGCAGCAGCAGCAGCAGCAGCGGC
AGCAGCAGCTCTCCAGCGACTCAGAGAGCAGCTCCGGATCTGACTCGGAGACCGAGAGCAGCTCCAGCG
AGAGTGAGGGCAGCAAGCCCCCACTTCTCCAGCCCCGAGGCTGAACCGGCATCTCTAACAGTGGA
GCTGGATAAATGGCTAAACAAAGTTAATCCCCACAAGCCTCTATTCTGATCCAAATGAAAGCCACGGG



[View online »](#)

TCAGAGCAATCAGTACTACAACCCGGTGAAGAGGACGTCCAGGACTGTGGGAAAGTCCCGACGTTT
 GCCAGCCCAGCCTGAGAGAGAAGGAGATCAAGAGCACTTGCAAGGAGGAGCAAAGGCCAAGGACAGCCAA
 CAAGGCCCTGGGAGTAAAGGCGTGAAGCAGAAGTCCCGCCCGCGGCGTGGCCGTGGCGGTGAGCGCA
 GCCGCCCGCCACCCGCAGTGCCTGTGCGCCCGGAGAACGCGCCCGCGCCTGCCCGGAGGTCCGCGG
 GCAAGAAGCCCACCAGGCGCACCAGAGAGACCTCAGCCGGGGACGGCGCCAACTGCCACCGGCCGAGGA
 GCCCGCGGCCGCGGACGCGTGGGACGAGCGTGGTGGTCCCCCGGAGCCACAAAACCAGGCCCTGT
 GGCAACAACAGAGCGAGCCACCGAAGGAGTGCCTCCTCCGTGACCTGCGAGAAGCGCCGACGCGGG
 GGCTAAGCAGGATCGTCCCAAATCCAAGGAGTTCATTGAGACAGAGTCGTATCTTCATCCTCCTCCTC
 GGACTCCGACCTGGAGTCCGAGCAGGAGGAGTACCCTCTGTCCAAGCACAGACCGTGGCTGCCTCTGCC
 TCCTCCGGAATGATCAGAGGCTGAAGGAGGCCGCTGCCAACGGGGGAGTGGTCTAGGGCCCCTGTAG
 GCTCCATCAACGCCAGGACCACCAGTGACATCGCCAAGGAGCTGGAGGAGCAGTTCTACACACTGGTCCC
 CTTTGGCCGAACGAACTTCTCTCCCTCTAAAGGACAGTGATGAGATCAGGTCTCTCTGGGTCAAATC
 GACCTGACCTCCTGTCCAGGATCCAGAACACCTGCCCCAGGAGCCAGGGGTATTGAGCGCCCCTGCCA
 CCAAGGACTCTGAGAGCGCACCCGCCAGCCACACCTCGGACACACCTGCAGAAAAGGCTTTGCCAAAATC
 CAAGAGGAAACGCAAGTGTGACAACGAAGACGACTACAGGGAGATCAAGAAGTCCAGGGAGAGAAAAGAC
 AGCTCTTCAAGACTGGCCACCTCCACCAGTAATACTTTGTCTGCAAACCACTGCAACATGAACATCAACA
 GTGTGGCAATACCAATAAATAAAAAATGAAAAATGCTTCGGTCCGCCATCTCACCCCTCTCTGATGCATC
 TAAACACAAAATACACCAGCGAGGACTTAACTTCTTCCAGCCGACCTAATGGCAACAGTTTGTACTTCA
 GCCTCTTCCAGCAAAAAGCCTAAGGCCGACAGCCAGCTGCAGCCTCACGGCGGAGACCTCACGAAAGCAG
 CTCACAACAATTCTGAAAACATTCCTCCACAAGTACGGCCGACAGCAAGCCGTGGTCTCCAGGCTC
 CAACGGCCACAGGGACTGCAAGAGGCAGAACTTGTCTTCGATGATATGCCTCGCAGTGCCGATTATTTT
 ATGCAAGAAGCTAAACGAATGAAGCATAAAGCAGATGCAATGGTGGAAAAGTTTGGAAAGCTTTGAACT
 ATGCTGAAGCAGCATTGTCGTTTATCGAGTGTGGAAATGCAATGGAACAAGGCCCATGGAATCCAATC
 TCCTTATACGATGTATTCAGAAACAGTAGAGCTCATCAGGTATGCTATGAGACTAAAAACCACTCAGGC
 CCCAATGCCACACCAGAAGACAAACAAGTGGCTGCATTATGTTACCGATGCCTGGCCCTCTGACTGGC
 GGATGTTTCGACTCAAAAAGGGACCACGCTGTAAGTATTCAAAAAGCACTAATCGACTATTCAAGAACTC
 ATCTAAAGCCGCCAAGCCCATCTCCGTGGGGGCCAGTGAAAAGAGCACTGGAACCCCATCCCCATG
 TCTCCAACCCCTCTCCCGCCAGCTCCGTGGGTCTCAGGGCAGCCTCTCCAACGCCAGCGCCCTGTCCC
 CGTCGACCATCGTCAGCATCCACAGCGCATCCACCAGATGGCGGCAACCACGTCAGCATACCAACAG
 CATCCTGCACAGTACGACTACTGGGAGATGGCCGACAACCTGGCCAAGGAAAACCGAGAATTCTCAAC
 GACCTGGATCTGCTCATGGGGCCGGTACCCTGCACAGCAGCATGGAGCACCTGGTCCAGTACTCCAAC
 AGGGCCTGCACTGGCTGCGGAACAGCGCCACCTGTCA

ACGCGTACGCGGCCGCTCGAGCAGAACTCATCTCAGAAGAGGATCTGGCAGCAAATGATATCCTGGATT
 ACAAGGATGACGACGATAAGGTTTAA

Protein Sequence: >RC221621 representing NM_002285
 Red=Cloning site Green=Tags(s)

MDSFDLALLQEWDLESLCVYEPDRNALRRKERERRNQETQDDGTFNSSYSLSEPYKTNKGDELSNRIQ
 NTLGNYDEMKDFLTDRSNQSHLVGVKPKGVPTPVNKIDEHFVADSRAQNQPSSICSTTTSTPAAVPVQQ
 SKRGTMGWQKAGHPPSDGQQRATQQGSLRLLGDGVRQQPRAKQVCNVEVGLQTQERPPAMAAKHSSSG
 HCVQNFPPSLASKPSLVQQKPTAYVRPMDGQDQAPDESPKLSSETSVHCTSYRQVPAASKPEPARAKAK
 LSKFSIPKQGEESRSGETNSCVVEIIREMTWLPPLSAIQAPGKVEPTKFFPKNKDSQLVSSGHNNPKKGD
 AEPESPDNGTSNTSMLEDDLKLSDEEENEQAAQRTALRALSDSAVVQQPNCRTSVPSSKGSSSSSSSG
 SSSSSSSESSSSGSDSETSSSSSESESKPPHFSSPEAEPASSNKWLKWLKVNPNHKKPILIQNESHG
 SESNQYYNPVKEDVQDCGKVPDVCQPSLREKEIKSTCKEEQRPRTANKAPGSKGVKQKSPPAAVAVVSA
 AAPPPAVPCAPENAPARRSAGKKPTRRTERTSAGDGANCHRPEEAAADALGTSVVVPEPTKTRPC
 GNNRASHRKELRSSVTCEKRRTRGLSRIVPKSEFIETSSSSSSSDSLESEQEEYPLSKAQTVAAASA
 SSGNDQRLKEAANGSGPRAPVGSINARTTSDIAKELEEQFYTLVPFGRNELLSPDKDSDEIRSLWVKI
 DLTLLSRIPEHLPOEPGLSAPATKDESEAPPSHTSDTPAEKALPKSKRKRKCDNEDDYREIKKSQGEKD
 SSSLATSTSNLTSANHCNMNINSVAIPINKNEKMLRSPISPLSDASKHKYTSDELTSSSRPNGNSLFTS
 ASSSKPKKADSQLQPHGGDLTKAAHNSNIPLHKSQPQTKPWSPGSNGHRDCKRQKLVFDDMPRSADYF
 MQEAKRMKHKADAMVEKFGKALNYEAALSFIECGNAMEQGPMEKSPYTMYSVELIRYAMRLKTHSG
 PNATPEDKQLAALCYRCLALLYWRMFLKRDHAVKYSKALIDYFKNSSKAAQAPSPWGASGKSTGTPSPM
 SPNPSPASSVGSQGLSNASALSPSTIVSIPQRIHQMAANHVSIINSILHSYDYWEMADNLAKENREFFN
 DLDLLMGPVTLHSSMEHLVQYSQQGLHWRNSAHLA

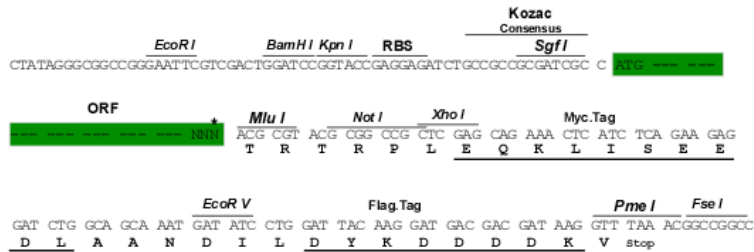
TRTRPLEQKLISEEDLAANDILDYKDDDDKV

Restriction Sites:

Sgfl-MluI

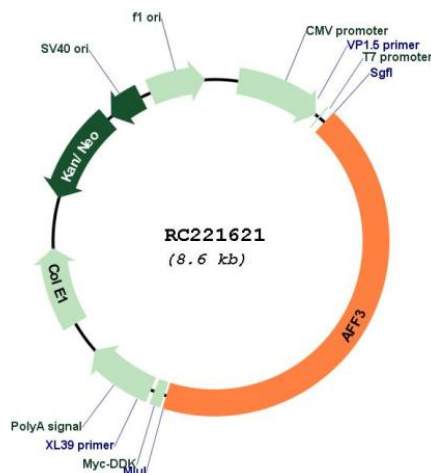
Cloning Scheme:

Cloning sites used for ORF Shuttling:



* The last codon before the Stop codon of the ORF

Plasmid Map:



ACCN: NM_002285

ORF Size: 3678 bp

OTI Disclaimer: The molecular sequence of this clone aligns with the gene accession number as a point of reference only. However, individual transcript sequences of the same gene can differ through naturally occurring variations (e.g. polymorphisms), each with its own valid existence. This clone is substantially in agreement with the reference, but a complete review of all prevailing variants is recommended prior to use. [More info](#)

OTI Annotation: This clone was engineered to express the complete ORF with an expression tag. Expression varies depending on the nature of the gene.

Components: The ORF clone is ion-exchange column purified and shipped in a 2D barcoded Matrix tube containing 10ug of transfection-ready, dried plasmid DNA (reconstitute with 100 ul of water).

Reconstitution Method:

1. Centrifuge at 5,000xg for 5min.
2. Carefully open the tube and add 100ul of sterile water to dissolve the DNA.
3. Close the tube and incubate for 10 minutes at room temperature.
4. Briefly vortex the tube and then do a quick spin (less than 5000xg) to concentrate the liquid at the bottom.
5. Store the suspended plasmid at -20°C. The DNA is stable for at least one year from date of shipping when stored at -20°C.

RefSeq: [NM_002285.3](#)

RefSeq Size: 8153 bp

RefSeq ORF: 3681 bp

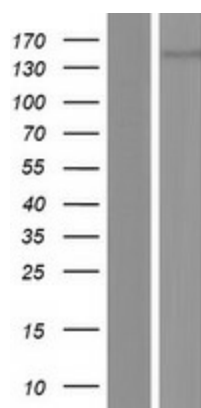
Locus ID: 3899

UniProt ID: [P51826](#)

Cytogenetics: 2q11.2
Domains: AF-4
Protein Families: Transcription Factors
MW: 133.3 kDa

Gene Summary: This gene encodes a tissue-restricted nuclear transcriptional activator that is preferentially expressed in lymphoid tissue. Isolation of this protein initially defined a highly conserved LAF4/MLLT2 gene family of nuclear transcription factors that may function in lymphoid development and oncogenesis. In some ALL patients, this gene has been found fused to the gene for MLL. Multiple alternatively spliced transcript variants that encode different proteins have been found for this gene. [provided by RefSeq, Jul 2008]

Product images:



Western blot validation of overexpression lysate (Cat# [LY419437]) using anti-DDK antibody (Cat# [TA50011-100]). Left: Cell lysates from untransfected HEK293T cells; Right: Cell lysates from HEK293T cells transfected with RC221621 using transfection reagent MegaTran 2.0 (Cat# [TT210002]).