

Product datasheet for RC221607

KCTD20 (NM_173562) Human Tagged ORF Clone

Product data:

Product Type:	Expression Plasmids
Product Name:	KCTD20 (NM_173562) Human Tagged ORF Clone
Tag:	Myc-DDK
Symbol:	KCTD20
Synonyms:	C6orf69; dj108K11.3
Mammalian Cell Selection:	Neomycin
Vector:	pCMV6-Entry (PS100001)
E. coli Selection:	Kanamycin (25 ug/mL)
ORF Nucleotide Sequence:	>RC221607 representing NM_173562 Red=Cloning site Blue=ORF Green=Tags(s)

TTTTGTAATACGACTCACTATAGGGCGGCCGGAATTCGTCGACTGGATCCGGTACCGAGGAGATCTGCC
GCC**CGATCGCC**

ATGAATGTTCCCGTGGCAGTGACAGTGACAGGTTATTGCGGCAGGAGGCCAGCTGCTTAGTGGATGATA
CTTTAGCTGTAGCCCAAGAAAAAGAAGCAAACAGCCTGGCTTCATCTGGTCCTCATAATCTTACTTATCC
TCTAGGTCCCAGGAATGAAGACCTCTCACTTGACTATGCCTCTCAGCCAGCAAATCTTCAGTTCCTCAC
ATAATGCCCTTGCTGAAGACATCAAAGTTCTTGCTTCAAAGTGGGAATAAACGGAACCATGAACCTT
TTATTGCTCCAGAAAGATTTGGAACAGTAGTGTGGGCTTGGCAGTAATCCCATTCCAAGCACCAGA
GAAAGTGACGCTTCTGTAGATGGCACAGTTTTGTTGTGAATCCACAGATTTTCACTGCTCATCCGGAT
ACCATGCTGGGAAGGATGTTTGGACCAGGAAGAGAGTACAACCTCACTCGGCCAATGAGAAGGGAGAGT
ATGAGATTGCTGAAGGCATCAGTGCAACTGATTTTCGCACAGTGTGGATTATTACAAAACCGGTATCAT
CAATTGTCCTGATGGCATCTCTATCCCAGATCTTAGAGATACTTGTGATTATCTCTGCATTAATTTTGC
TTCAACACTATCCGATGTCAAGATCTGAGTGTCTTACTCCATGAAGTGTCTAATGACGGTGTCTATAAGC
AGTTTGATCACTACCTCGAAGAGCTCATTTGCCCATCATGGTGGGCTGTGCCAAGAAAGGAGAACGAGA
GTGCCACATTGTTGCTGACGGATGAGGATTCTGTGGACTGGGATGAAGACCACCCTCCACCAATGGGG
GAGGAATATCCCAAATCTTTATAGCTCCAAGCTCTACAGATCTTCAAATATATTGAGAATAGGGATG
TTGCAAAAACAGTGTTAAAGGAACGGGGCTAAAAAACATTTCGATTGGAATTGAAGTTACCCTACCTG
TAAAGAAAAAATTAAGAGAAGGCCTGGCGCGGCTCTGAAGTCACTATAATTATGTACAACGCCCTTTC
ATCCAGATGTCATGGGAAAAGGAAGAAGGGAAGAGTCGCCATGTGGATTTCAGTGTGTTGGAAGCAAAT
CCCTCACGAATCTGGTAGCTGCTGGAGATGATGCTTGGAGGACCAGGAGATTAATGCATCACCACC
CCAAGTGGATGAAGTACCGGCTAAATGCCCACTTTCTCAGATGGCTTCTAACGACTTTCAGGAT

ACGGTACGGCGCGCTCGAGCAGAACTCATCTCAGAAGAGGATCTGGCAGCAAATGATATCTGGATT
ACAAGGATGACGACGATAAGGTTTAA



[View online »](#)

Protein Sequence: >RC221607 representing NM_173562
 Red=Cloning site Green=Tags(s)

MNVHRGSDSDRLLRQEASCLVDDTLAVAQEKEANSLASSGPHNL TYPLGPRNEDLSLDYASQPANLQFPH
 IMPLAEDIKGSFCFQSGNKRNHPEFIAPERFGNSSVGFSGNSHSQAPEKVTLLVDGTRFVNPQIFTAHPD
 TMLGRMFPGGREYNFTRPNEKGEYEIAEGISATVFRTVLDYYKTGIINCPDGISIPDLRDTCDYL CINF
 FNTIRCQDL SALLHEL SNDGAHKQFDHYLEEL ILPIMVGC AKKGERECHIVVL TDEDSVDWDEHDHPPPMG
 EEYSQILYSSKLYRFKYIENRDVAKTVLKERGLKNIRIGIEGYPTCKEKIKRRPGRSEVIYNYVQRPF
 IQMSWEKEEGKSRHVDQCVRKSLTNLVAAGDDVLEDQEILMHHPQVDELDRNLNAPLSQMASDNDFQD

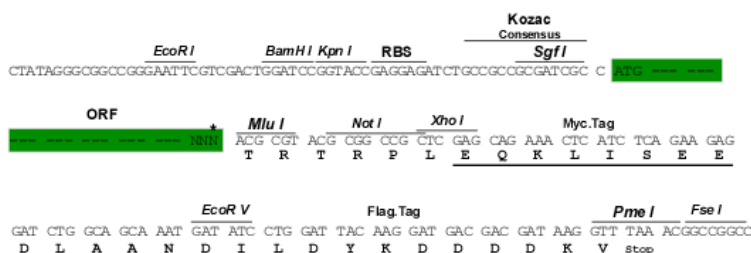
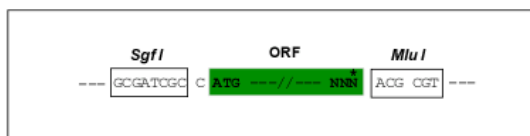
TRTRPLEQKLISEEDLAANDILDYKDDDDKVV

Chromatograms: https://cdn.origene.com/chromatograms/ja1122_a03.zip

Restriction Sites: SgfI-MluI

Cloning Scheme:

Cloning sites used for ORF Shuttling:



* The last codon before the Stop codon of the ORF

ACCN: NM_173562

ORF Size: 1257 bp

OTI Disclaimer: The molecular sequence of this clone aligns with the gene accession number as a point of reference only. However, individual transcript sequences of the same gene can differ through naturally occurring variations (e.g. polymorphisms), each with its own valid existence. This clone is substantially in agreement with the reference, but a complete review of all prevailing variants is recommended prior to use. [More info](#)

OTI Annotation: This clone was engineered to express the complete ORF with an expression tag. Expression varies depending on the nature of the gene.

Components: The ORF clone is ion-exchange column purified and shipped in a 2D barcoded Matrix tube containing 10ug of transfection-ready, dried plasmid DNA (reconstitute with 100 ul of water).

Reconstitution Method:

1. Centrifuge at 5,000xg for 5min.
2. Carefully open the tube and add 100ul of sterile water to dissolve the DNA.
3. Close the tube and incubate for 10 minutes at room temperature.
4. Briefly vortex the tube and then do a quick spin (less than 5000xg) to concentrate the liquid at the bottom.
5. Store the suspended plasmid at -20°C. The DNA is stable for at least one year from date of shipping when stored at -20°C.

Note: Plasmids are not sterile. For experiments where strict sterility is required, filtration with 0.22um filter is required.

RefSeq: [NM_173562.5](#)

RefSeq Size: 5032 bp

RefSeq ORF: 1260 bp

Locus ID: 222658

UniProt ID: [Q7Z5Y7](#)

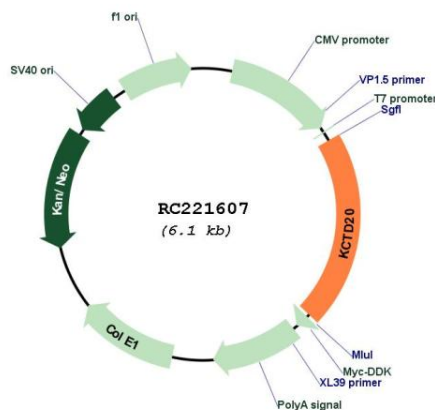
Cytogenetics: 6p21.31

Protein Families: Druggable Genome, Ion Channels: Other

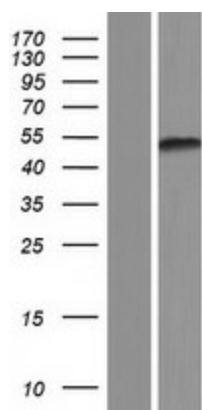
MW: 47.3 kDa

Gene Summary: Promotes the phosphorylation of AKT family members.[UniProtKB/Swiss-Prot Function]

Product images:



Circular map for RC221607



Western blot validation of overexpression lysate (Cat# [LY406473]) using anti-DDK antibody (Cat# [TA50011-100]). Left: Cell lysates from untransfected HEK293T cells; Right: Cell lysates from HEK293T cells transfected with RC221607 using transfection reagent MegaTran 2.0 (Cat# [TT210002]).