

Product datasheet for **RC221606**

CD61 (ITGB3) (NM_000212) Human Tagged ORF Clone

Product data:

Product Type:	Expression Plasmids
Product Name:	CD61 (ITGB3) (NM_000212) Human Tagged ORF Clone
Tag:	Myc-DDK
Symbol:	CD61
Synonyms:	BDPLT2; BDPLT16; BDPLT24; CD61; GP3A; GPIIIa; GT; GT2
Mammalian Cell Selection:	Neomycin
Vector:	pCMV6-Entry (PS100001)
E. coli Selection:	Kanamycin (25 ug/mL)



[View online »](#)

ORF Nucleotide Sequence:

>RC221606 representing NM_000212.

Blue=ORF Red=Cloning site Green=Tag(s)

```

GCTCGTTTAGTGAACCGTCAGAATTTTGTAAACGACTCACTATAGGGCGGCCGGGAATTCGTGACTG
GATCCGGTACCGAGGAGATCTGCCGCCGCGATCGCC
ATGCGAGCGCGGCCGCGCCCGCCCGCTCTGGGCGACTGTGCTGGCGCTGGGGGCGCTGGCGGGCGTT
GGCGTAGGAGGGCCAACATCTGTACCACGCGAGGTGTGAGCTCCTGCCAGCAGTGCCTGGCTGTGAGC
CCCATGTGTGCCGTGCTCTGATGAGGCCCTGCCCTCTGGGCTCACCTCGCTGTGACCTGAAGGAGAAT
CTGCTGAAGGATAACTGTGCCCAAGAATCCATCGAGTTCCAGTGAAGTGAAGGCCCCGAGTACTAGAGGAC
AGGCCCTCAGCGACAAGGGCTCTGGAGACAGCTCCCAGGTCCTCAAGTCAAGTCCCCAGAGGATTGCA
CTCCGGCTCCGGCCAGATGATTCGAAGAATTTCTCCATCCAAGTGCAGCAGGTGGAGGATTACCTGTG
GACATCTACTACTTGTGACCTGTCTTACTCCATGAAGGATGATCTGTGGAGCATCCAGAACCTGGGT
ACCAAGCTGGCCACCCAGATGCGAAAGCTCACCAGTAACCTGCGGATTGGCTTCGGGGCATTGTGGAC
AAGCCTGTGTACCATACATGTATATCTCCCCACCAGAGGCCCTCGAAAACCCCTGCTATGATATGAAG
ACCACCTGCTTGCCCATGTTTGGCTACAAACACGTGCTGACGCTAACTGACCAGGTGACCCGCTTCAAT
GAGGAAGTGAAGAAGCAGAGTGTGTACCGAACCAGAGATGCCCAAGAGGGTGGCTTTGATGCCATCATG
CAGGCTACAGTCTGTGATGAAAAGATTGGCTGGAGGAATGATGCATCCCCTTGTGGTGTTTACCACT
GATGCCAAGACTCATATAGCATTGGACGGAAGGCTGGCAGGCATTGTCCAGCCTAATGACGGGCACTGT
CATGTTGGTAGTGACAATCATTACTCTGCCCTCCACTACCATGGATTATCCCTCTTTGGGGCTGATGACT
GAGAAGCTATCCAGAAAAACATCAATTTGATCTTTGCAGTGAAGTGTAGTCAATCTCTATCAG
AACTATAGTGAGTCACTCCAGGGACCACAGTTGGGGTCTGTCCATGGATTCCAGCAATGTCCTCCAG
CTCATTGTTGATGCTTATGGGAAAATCCGTTCTAAAGTAGAGCTGGAAGTGCCTCAAGTCTTGTATGGGA
CTCAAGATTGGAGACACGGTGAAGCTTCAAGATTGAGGCCAAGGTGCGAGGCTGTCCCAAGGAGAAGGAG
AAGTCCTTACCATAAAGCCCGTGGGCTTCAAGGACAGCCTGATCGTCCAGGTACCTTTGATTGTGAC
TGTGCCTGCCAGGCCAAGCTGAACCTAATAGCCATCGCTGCAACAATGGCAATGGGACCTTTGAGTGT
GGGGTATGCCGTTGTGGGCTGGCTGGCTGGGATCCCAGTGTGAGTGTGCTCAGAGGAGGACTATCGCCCT
TCCCAGCAGGACGAATGCAGCCCCGGGAGGGTCAGCCCGTCTGCAGCCAGCGGGGCGAGTGCCTCTGT
GGTCAATGTGTCTGCCACAGCAGTACTTTGGCAAGATCACGGGCAAGTACTGCGAGTGTGACGACTTC
TCCTGTGTCCGCTACAAGGGGAGATGTGCTCAGGCCATGGCCAGTGCAGCTGTGGGACTGCCTGTGT
GACTCCGACTGGACCGGCTACTACTGCAACTGTACCACGCGTACTGACACCTGCATGTCCAGCAATGGG
CTGCTGTGCAGCGCCCGGGCAAGTGTGAATGTGGCAGCTGTGTCTGTATCCAGCCGGGCTCCTATGGG
GACACCTGTGAGAAGTGCCCCACCTGCCAGATGCCTGCACCTTAAAGAAAGAATGTGTGGAGTGAAG
AAGTTTGACCGGGGAGCCCTACATGACGAAAATACCTGCAACCGTTACTGCCGTGACGAGATTGAGTCA
GTGAAAGAGCTTAAGGACACTGGCAAGGATGCAGTGAATTGTACCTATAAGAATGAGGATGACTGTGTC
GTCAGATTCCAGTACTATGAAGATTCTAGTGGAAAGTCCATCCTGTATGTGGTAGAAGAGCCAGAGTGT
CCCAAGGGCCCTGACATCCTGGTGGTCTGTCTCAGTGTGAGGAGGCAATTTGCTCATTGGCCTTGCC
GCCCTGCTCATCTGAAACTCCTCATCACCATCCACGACCGAAAAGAATTCGCTAAATTTGAGGAAGAA
CGCGCCAGAGCAAAATGGGACACAGCCAACAACCCACTGTATAAAGAGGCCACGTCTACCTTCACCAAT
ATCACGTACCGGGCACT
AGCGGACCGACGCGTACGCGGCCCTCGAGCAGAACTCATCTCAGAAGAGGATCTGGCAGCAAATGAT
ATCCTGGATTACAAGGATGACGACGATAAGGTTTAA
  
```

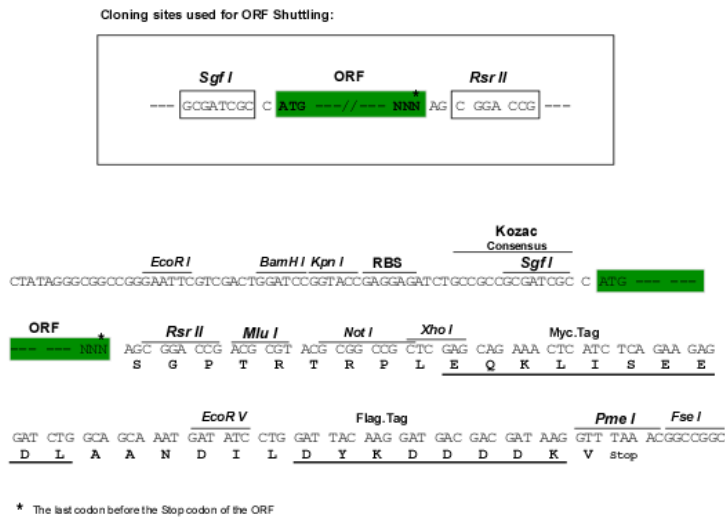
Protein Sequence: >Peptide sequence encoded by RC221606
Blue=ORF Red=Cloning site Green=Tag(s)

MRARPRRPLWATVLALGALAGVGVGGPNICTTRGVSSCQQLAVSPMCAWCSDEALPLGSPRCDLKEN
LLKDNCAPESEIEFPVSEARVLEDRPLSDKSGDSSQVTQVSPQRIALRLRPDDSKNFSIQVRQVEDYYPV
DIYYLMDLSYSMKDDLWSIQNLGKTLATQMRKLTSNLRIGFGAFVDKPVSPYMYISPPEALENPCYDMK
TTCLPMFGYKHVLTLDQVTRFNEEVKQSVSRNRDAPEGGFDAIMQATVCDEKIGWRNDASHLLVFTT
DAKTHIALDGRLAGIVQPNQGCHVGSNDHYSASTTMDYPSLGLMTEKLSQKNINLIFAVTENVVNLVYQ
NYSELIPGTTVGVL SMDSSNVLQLIVDAYGKIRSKVELEVRLPEELSLSFNATCLNNEVIPGLKSCMG
LKI GDTV SFSIEAKVRGCPQEKEKSFTIKPVGFKDSLIVQVTFDCDCACQAQAEPNSHRCNNGNNGTFEC
GVCRCGPGWLGSQCESEEDYRPSQQDECSPREGQPVCSQRGECLCGQCVCHSSDFGKITGKYCECDDF
SCVRYKGEMCSGHGQCSCGDCLCSDWTGYCNCCTTRTDTCMSSNGLLCSGRGKCEGSCVCIQPGSYG
DTCEKCPDCTACTFKKECVECKKFDRGALHDENTCNRYCRDEIESVKELKDTGKDAVNCTYKNEDDCV
VRFQYYEDSSGKSILYVVEEPECPKGPDILVLLSVMGAILLIGLAALLIWKLLITIHDRKEFAKFEE
RARAKWDTANNPLYKEATSTFTNITYRGT
SGPTRTRPLEQKLISEEDLAANDILDYKDDDDKV

Recombinant protein using RC221606 also available, [TP321606](#)

Chromatograms: https://cdn.origene.com/chromatograms/mk6223_b06.zip

Restriction Sites: Sgfl-RsrII

Cloning Scheme:


ACCN: NM_000212

ORF Size: 2364 bp

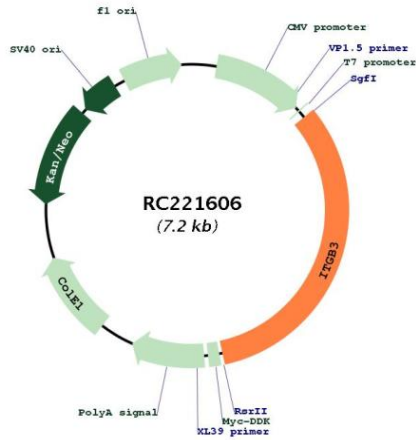
OTI Disclaimer: The molecular sequence of this clone aligns with the gene accession number as a point of reference only. However, individual transcript sequences of the same gene can differ through naturally occurring variations (e.g. polymorphisms), each with its own valid existence. This clone is substantially in agreement with the reference, but a complete review of all prevailing variants is recommended prior to use. [More info](#)

OTI Annotation: This clone was engineered to express the complete ORF with an expression tag. Expression varies depending on the nature of the gene.

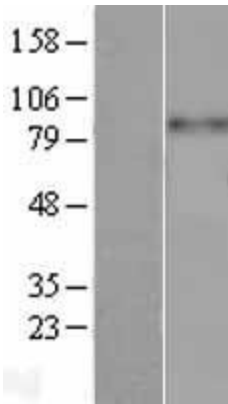
Components: The ORF clone is ion-exchange column purified and shipped in a 2D barcoded Matrix tube containing 10ug of transfection-ready, dried plasmid DNA (reconstitute with 100 ul of water).

Reconstitution Method:	<ol style="list-style-type: none">1. Centrifuge at 5,000xg for 5min.2. Carefully open the tube and add 100ul of sterile water to dissolve the DNA.3. Close the tube and incubate for 10 minutes at room temperature.4. Briefly vortex the tube and then do a quick spin (less than 5000xg) to concentrate the liquid at the bottom.5. Store the suspended plasmid at -20°C. The DNA is stable for at least one year from date of shipping when stored at -20°C.
Note:	Plasmids are not sterile. For experiments where strict sterility is required, filtration with 0.22um filter is required.
RefSeq:	NM_000212.3
RefSeq Size:	4894 bp
RefSeq ORF:	2367 bp
Locus ID:	3690
UniProt ID:	P05106
Cytogenetics:	17q21.32
Domains:	INB, EGF
Protein Families:	Druggable Genome, ES Cell Differentiation/IPS, Transmembrane
Protein Pathways:	Arrhythmogenic right ventricular cardiomyopathy (ARVC), Dilated cardiomyopathy, ECM-receptor interaction, Focal adhesion, Hematopoietic cell lineage, Hypertrophic cardiomyopathy (HCM), Regulation of actin cytoskeleton
MW:	87.1 kDa
Gene Summary:	The ITGB3 protein product is the integrin beta chain beta 3. Integrins are integral cell-surface proteins composed of an alpha chain and a beta chain. A given chain may combine with multiple partners resulting in different integrins. Integrin beta 3 is found along with the alpha IIb chain in platelets. Integrins are known to participate in cell adhesion as well as cell-surface mediated signalling. [provided by RefSeq, Jul 2008]

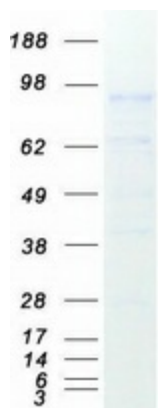
Product images:



Circular map for RC221606



Western blot validation of overexpression lysate (Cat# [LY424861]) using anti-DDK antibody (Cat# [TA50011-100]). Left: Cell lysates from untransfected HEK293T cells; Right: Cell lysates from HEK293T cells transfected with RC221606 using transfection reagent MegaTran 2.0 (Cat# [TT210002]).



Coomassie blue staining of purified ITGB3 protein (Cat# [TP321606]). The protein was produced from HEK293T cells transfected with ITGB3 cDNA clone (Cat# RC221606) using MegaTran 2.0 (Cat# [TT210002]).