

## Product datasheet for RC221605

### NCBP2 (NM\_001042540) Human Tagged ORF Clone

#### Product data:

**Product Type:** Expression Plasmids  
**Product Name:** NCBP2 (NM\_001042540) Human Tagged ORF Clone  
**Tag:** Myc-DDK  
**Symbol:** NCBP2  
**Synonyms:** CBC2; CBP20; NIP1; PIG55  
**Mammalian Cell Selection:** Neomycin  
**Vector:** pCMV6-Entry (PS100001)  
**E. coli Selection:** Kanamycin (25 ug/mL)  
**ORF Nucleotide Sequence:** >RC221605 representing NM\_001042540  
 Red=Cloning site Blue=ORF Green=Tags(s)

TTTTGTAAACGACTCACTATAGGGCGCCGGGAATTCGTCGACTGGATCCGGTACCGAGGAGATCTGCC  
 GCC**CGATCGCC**

ATGTGGGTGGCCTCCTGAAGGCGCTGCGCAGCGACTCCTACGTGGAGCTGAGCCAGTACCGGGACCAGC  
 ACTTCCGGGTGACAATGAAGAACAAGAAAAATTACTGAAGAAAAGCTATGCGGAAAACGCCATGCGGTA  
 CATAAATGGGACGCGTCTGGATGACCGAATCATTCGCACAGACTGGGACGCGGCTTTAAGGAGGGCAGG  
 CAATACGGCCGTGGGCGATCTGGGGCCAGGTTCTGGGATGAGTATCGGCAGGACTACGATGCTGGGAGAG  
 GAGGCTATGAAAACCTGGCACAGAACCAG

AG**CGGACCG**ACGCGTACGCGCCGCTCGAGCAGAACTCATCTCAGAAGAGGATCTGGCAGCAAATGATATCC  
 TGGATTACAAGGATGACGACGATAAGGTTAA

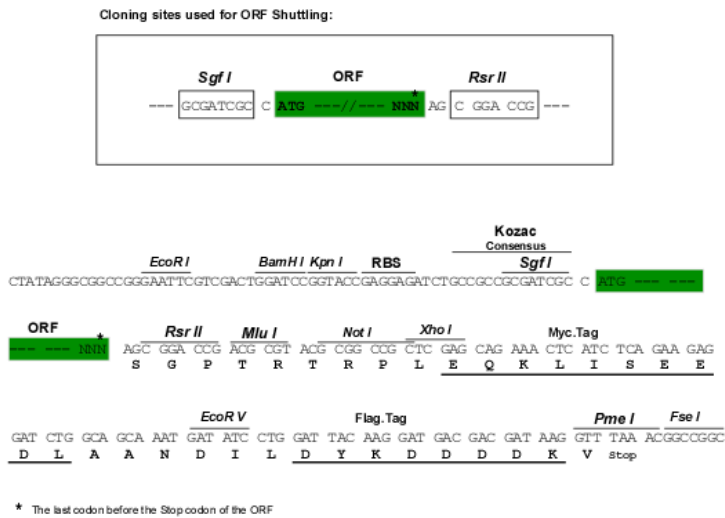
**Protein Sequence:** >RC221605 representing NM\_001042540  
 Red=Cloning site Green=Tags(s)  
 MSGLLKALRSDSYVELSQYRDQHFRGDNEEQEKLKLSYAENAMRYINGTRLDDRIIRTDWDAGFKEGR  
 QYGRGRSGGQVRDEYRQDYDAGRGGYGKLAQNQ

**SGP**TRTRRLEQKLISEEDLAANDILDYKDDDDKV

**Restriction Sites:** Sgfl-RsrII



[View online »](#)

**Cloning Scheme:**


**ACCN:** NM\_001042540

**ORF Size:** 309 bp

**OTI Disclaimer:** The molecular sequence of this clone aligns with the gene accession number as a point of reference only. However, individual transcript sequences of the same gene can differ through naturally occurring variations (e.g. polymorphisms), each with its own valid existence. This clone is substantially in agreement with the reference, but a complete review of all prevailing variants is recommended prior to use. [More info](#)

**OTI Annotation:** This clone was engineered to express the complete ORF with an expression tag. Expression varies depending on the nature of the gene.

**Components:** The ORF clone is ion-exchange column purified and shipped in a 2D barcoded Matrix tube containing 10ug of transfection-ready, dried plasmid DNA (reconstitute with 100 ul of water).

- Reconstitution Method:**
1. Centrifuge at 5,000xg for 5min.
  2. Carefully open the tube and add 100ul of sterile water to dissolve the DNA.
  3. Close the tube and incubate for 10 minutes at room temperature.
  4. Briefly vortex the tube and then do a quick spin (less than 5000xg) to concentrate the liquid at the bottom.
  5. Store the suspended plasmid at -20°C. The DNA is stable for at least one year from date of shipping when stored at -20°C.

**RefSeq:** [NM\\_001042540.1](#), [NP\\_001036005.1](#)

**RefSeq Size:** 2016 bp

**RefSeq ORF:** 312 bp

Locus ID: 22916

UniProt ID: [P52298](#)

Cytogenetics: 3q29

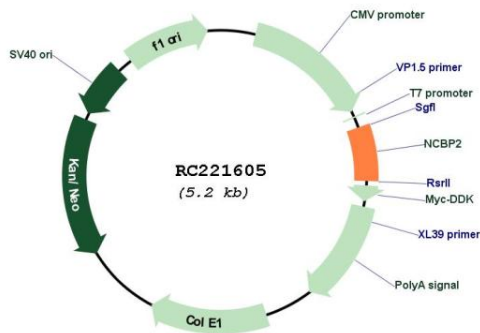
Protein Families: Druggable Genome

Protein Pathways: Spliceosome

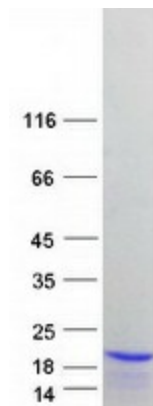
MW: 11.8 kDa

**Gene Summary:** The product of this gene is a component of the nuclear cap-binding protein complex (CBC), which binds to the monomethylated 5' cap of nascent pre-mRNA in the nucleoplasm. The encoded protein has an RNP domain commonly found in RNA binding proteins, and contains the cap-binding activity. The CBC promotes pre-mRNA splicing, 3'-end processing, RNA nuclear export, and nonsense-mediated mRNA decay. Multiple transcript variants encoding different isoforms have been found for this gene. [provided by RefSeq, Jul 2008]

### Product images:



Circular map for RC221605



Coomassie blue staining of purified NCBP2 protein (Cat# [TP321605]). The protein was produced from HEK293T cells transfected with NCBP2 cDNA clone (Cat# RC221605) using MegaTran 2.0 (Cat# [TT210002]).