

Product datasheet for **RC221597**

Fibulin 1 (FBLN1) (NM_006486) Human Tagged ORF Clone

Product data:

Product Type:	Expression Plasmids
Product Name:	Fibulin 1 (FBLN1) (NM_006486) Human Tagged ORF Clone
Tag:	Myc-DDK
Symbol:	Fibulin 1
Synonyms:	FBLN; FIBL1
Mammalian Cell Selection:	Neomycin
Vector:	pCMV6-Entry (PS100001)
E. coli Selection:	Kanamycin (25 ug/mL)



[View online »](#)

ORF Nucleotide Sequence:

>RC221597 representing NM_006486
 Red=Cloning site Blue=ORF Green=Tags(s)

TTTTGTAATACGACTCACTATAGGGCGGCCGGAATTCGTCGACTGGATCCGGTACCGAGGAGATCTGCC
 GCC**CGGATCGCC**

ATGGAGCGCGCCGCGCCGTCGCGCCGGTCCCGCTTCCGCTGCTGCTGCTCGGCGCCTTGCCTGCTGG
 CGGCCGAGTGGACGCGGATGTCCTCCTGGAGGCTGCTGTGCGGACGGACACCGGATGGCCACTCATCA
 GAAGGACTGCTCGCTGCCATATGCTACGGAATCCAAAGAATGCAGGATGGTGCAGGAGCAGTGTGCCAC
 AGCCAGCTGGAGGAGCTGCACTGTGCCACGGGCATCAGCCTGGCCAACGAGCAGGACCGCTGTGCCACGC
 CCCACGGTGACAACGCCAGCCTGGAGGCCACATTTGTGAAGAGGTGCTGCCATTGCTGTCTGCTGGGGAG
 GCGGCCAGGCCAGGCCAGAGCTGCGAGTACAGCCTCATGGTTGGCTACCAGTGTGGACAGGTCTTC
 CGGGCATGCTGTGTAAGAGCCAGGAGACCGGAGATTTGGATGTCGGGGGCTCCAAGAAACGGATAAGA
 TCATTGAGTTGAGGAGGAACAAGAGGACCCATATCTGAATGACCCTGCCGAGGAGCGGGCCCTGCAA
 GCAGCAGTCCGAGACACGGGTGACGAGTGGTCTGCTCCTGCTTCGTGGGCTACCAGCTGCTGTCTGAT
 GGTGCTCCTGTGAAGATGTCAATGAATGCATCAGGGCAGCCACAGCTGCCGGCTTGGAGAATCCTGCA
 TCAACACAGTGGGCTCTTCCGCTGCCAGCGGGACAGCAGCTGCCGGACTGGCTATGAGCTCACAGAGGA
 CAATAGCTGCAAAGATATTGACGAGTGTGAGAGTGGTATTATAACTGCCTCCCCGATTTTATCTGTGAG
 AATACTCTGGGATCCTTCCGCTGCCACCAAGCTACAGTGAAGAGTGGCTTTATAAAGATGCTCTAG
 GCAACTGTATTGATATCAATGAGTGTGAGTATCAGTGGCCCGTGCCTATTGGGCATACATGCATCAA
 CACAGAGGGCTCCTACAGTGCAGAGAAGACGTGCCAACTGTGGCCGTGGCTACCATCTCAACGAGGAG
 GGAACGCGCTGTGTTGATGTGGACGAGTCCGCGCCACCTGCTGAGCCCTGTGGGAAGGGACATCGCTGCC
 TGAACTCTCCCGCAGTTTCCGCTGCGAATGCAAGACGGGTTACTATTTGACGGCATCAGCAGGATGTG
 TGTGATGTCAACGAGTGCAGCCTACCCCGGGCCTGTGTGGCCACAAGTGCAGAGAACAACGCTGGGC
 TCTACCTCTGCAGCTGTTCCGCTGGGCTTCCGGCTCTCTGTGGATGGCAGGTCATGTGAAGACATCAATG
 AGTGCAGCAGCAGCCCTGTAGCCAGGAGTGTGCCAAGCTCTACGGCTCTACCAGTGTACTGCCGGCG
 AGGCTACCAGCTCAGCGATGTGGATGGAGTCACTGTGAAGACATCGACGAGTGCGCCCTGCCACCGGG
 GGCCACATCTGCTCCTACCGCTGCATCAACATCCCTGGAAGCTTCCAGTGCAGCTGCCCTCGTCTGGCT
 ACAGGCTGGCCCCAATGGCCGCACTGCCAAGACATTGATGAGTGTGTGACTGGCATCCACAAGTCTC
 CATCAACGAGACCTGCTCAACATCCAGGGCGGCTTCCGCTGCCTGGCCTTCGAGTGCCTGAGAAGTAC
 CGCCGCTCCGAGCCACGCTCCAGCAGGAGAAGACAGACAGGTCGGCTGCATCAAGTCTGCCGCCCA
 ACGATGTCACATGCGTGTTCGACCCCGTGCACACCATCTCCACACCGTCATCTCGCTGCCTACCTCCG
 CGAGTTACCCCGCCTGAAGAGATCATTTCTCCGGGCCATCACGCCACCGCATCCTGCCAGCCAGGCT
 AACATCATCTTCGACATCACGGAAGGGAACCTGCCGGACTCTTTTGACATCATCAAGCGTTACATGGACG
 GCATGACCGTGGGTGTCGTGCGCCAGGTGCGGCCATCGTGGGCCATTTATGCGCTCCTGAAGCTGGA
 GATGAAGTATGTTGTCGGGGCGTGGTCTCCACCGAAATGTTGTCAACGTCCACATCTTCGTCTCTGAG
 TACTGGTTC

ACGCGTACGCGGCCGCTCGAGCAGAACTCATCTCAGAAGAGGATCTGGCAGCAAATGATATCCTGGATT
 ACAAGGATGACGACGATAAGGTTTAA

Protein Sequence: >RC221597 representing NM_006486
Red=Cloning site Green=Tags(s)

```
MERAAPSRRVPLPLLLLGGALLAAGVDADVLLLEACCADGHRMATHQKDCSLPYATESKECRMVQECCCH
SQLEELHCATGISLANEQDRCATPHGDNASLEATFVKRCCHCCLLGRAAAQAGQSCEYSMLVGYQCGQVF
RACCVKSQETGDLVDVGLQETDKIIEVEEEQEDPYLNDRCRGGGPKQQCRDTGDEVVCSFVGYQLLSD
GVSCEDVNECITGSHSCLGESCINTVGSFRCQRDSSCGTGYELTEDNSCKDIDECESGIHNCLPDFICQ
NTLGSFRCRPKLQCKSGFIQDALGNCIDINECLSIAPCPIGHTCINTEGSYTCQKNVPNCGRGRYHLNEE
GTRCVDVDECAPPAEPCGKGHRCVNSPGSFRCECKTGYFFDGI SRMCVDVNECQRYPRGLCGHKCENTLG
SYLCSCSVGFRLSVDGRSCEDINECSSSPCSQECANVYGSYQCYCRRGYQLSDVDGVTCEIDICALPTG
GHICSYRCINIPGSFQCSCPSSGYRLAPNGRNCQDIDECVTGIHNCSINETCFNIQGGFRCLAFECPENY
RRSAATLQEKTDTVRCIKSCRPNVDTCVFDPVHTISHTVISLPTFRFTRPEEIIIFLRAITPPHPASQA
NIIIFDITEGNLRDSFDIIKRYMDGMTVGVVRQVRPIVGPFFHAVLKLEMNYVGGVVS HRNVVNVHIFVSE
YWF
```

TRTRPLEQKLISEEDLAANDILDYKDDDDKV

Chromatograms: https://cdn.origene.com/chromatograms/mk6611_f05.zip

Restriction Sites: SgfI-MluI

Cloning Scheme:

Cloning sites used for ORF Shuttling:



* The last codon before the Stop codon of the ORF

ACCN: NM_006486

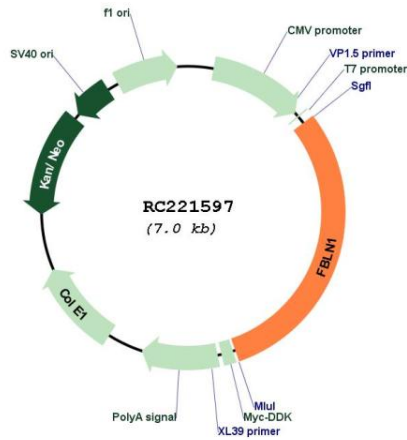
ORF Size: 2109 bp

OTI Disclaimer: The molecular sequence of this clone aligns with the gene accession number as a point of reference only. However, individual transcript sequences of the same gene can differ through naturally occurring variations (e.g. polymorphisms), each with its own valid existence. This clone is substantially in agreement with the reference, but a complete review of all prevailing variants is recommended prior to use. [More info](#)

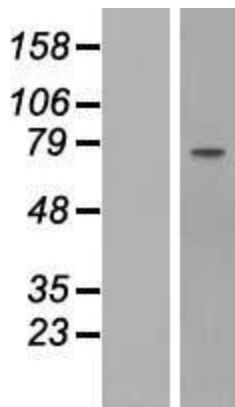
OTI Annotation: This clone was engineered to express the complete ORF with an expression tag. Expression varies depending on the nature of the gene.

Components:	The ORF clone is ion-exchange column purified and shipped in a 2D barcoded Matrix tube containing 10ug of transfection-ready, dried plasmid DNA (reconstitute with 100 ul of water).
Reconstitution Method:	<ol style="list-style-type: none">1. Centrifuge at 5,000xg for 5min.2. Carefully open the tube and add 100ul of sterile water to dissolve the DNA.3. Close the tube and incubate for 10 minutes at room temperature.4. Briefly vortex the tube and then do a quick spin (less than 5000xg) to concentrate the liquid at the bottom.5. Store the suspended plasmid at -20°C. The DNA is stable for at least one year from date of shipping when stored at -20°C.
Note:	Plasmids are not sterile. For experiments where strict sterility is required, filtration with 0.22um filter is required.
RefSeq:	NM_006486.3
RefSeq Size:	2947 bp
RefSeq ORF:	2112 bp
Locus ID:	2192
UniProt ID:	P23142
Cytogenetics:	22q13.31
Domains:	ANATO, EGF_CA, EGF, EGF
Protein Families:	Secreted Protein
MW:	77.24 kDa
Gene Summary:	Fibulin 1 is a secreted glycoprotein that becomes incorporated into a fibrillar extracellular matrix. Calcium-binding is apparently required to mediate its binding to laminin and nidogen. It mediates platelet adhesion via binding fibrinogen. Four splice variants which differ in the 3' end have been identified. Each variant encodes a different isoform, but no functional distinctions have been identified among the four variants. [provided by RefSeq, Jul 2008]

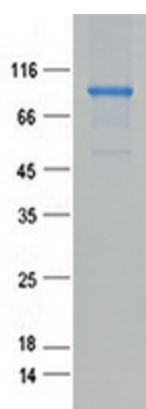
Product images:



Circular map for RC221597



Western blot validation of overexpression lysate (Cat# [LY416606]) using anti-DDK antibody (Cat# [TA50011-100]). Left: Cell lysates from untransfected HEK293T cells; Right: Cell lysates from HEK293T cells transfected with RC221597 using transfection reagent MegaTran 2.0 (Cat# [TT210002]).



Coomassie blue staining of purified FBLN1 protein (Cat# [TP321597]). The protein was produced from HEK293T cells transfected with FBLN1 cDNA clone (Cat# RC221597) using MegaTran 2.0 (Cat# [TT210002]).